

Product datasheet for **RC216041**

OSBPL6 (NM_145739) Human Tagged ORF Clone

Product data:

Product Type:	Expression Plasmids
Product Name:	OSBPL6 (NM_145739) Human Tagged ORF Clone
Tag:	Myc-DDK
Symbol:	OSBPL6
Synonyms:	ORP6
Mammalian Cell Selection:	Neomycin
Vector:	pCMV6-Entry (PS100001)
E. coli Selection:	Kanamycin (25 ug/mL)



[View online »](#)

ORF Nucleotide Sequence:

>RC216041 representing NM_145739
 Red=Cloning site Blue=ORF Green=Tags(s)

TTTTGTAATACGACTCACTATAGGGCGGCCGGGAATTCGTGACTGGATCCGGTACCGAGGAGATCTGCC
 GCC**GCGATCGCC**

ATGCATCAGTTATCTCTGATCAGGGGAAACAGAGGGCGGAGTATTCACATACTGGAGAGGACTGCTTCTCT
 CTAGCACCGAGCCCTCCGTAAGTCGGCAATTGCTAGAACCGGAGCCAGTCCCCCTCTCCAAGGAAGCTGA
 CAGCTGGGAAATTATAGAAGGGCTGAAAATAGGCCAAACCAATGTCCAGAAAACCAGACAAACATGAGGGC
 TTTATGCTGAAGAAAAGAAAATGGCCTTTAAAAGGCTGGCACAAGCGTTTTTTTTGTCTGGATAATGGAA
 TGTTAAAGTATTCAAAGGCACCACTCGATATTCAGAAAGGAAAGTCCATGGGAGCATAGATGTGGGACT
 CTCAGTCATGTCAATAAAAAGAAAGCTCGAAGAATAGACCTTGACACCGAAGAGCACATCTATCATTTG
 AAGGTGAAATCCCAGGACTGGTTTGTGATGATGGGTCTCCAACTGCGACATCATCGTTGTATCGTCAGA
 ATGAAATTGTGAGATACCAAGAGATGCTAGTTTTCACATATTTCTTCAACGTCCACAGCTGAATCCTC
 ACCAGCTGCTAATGTTTCTGTAATGGATGGAAAGATGCAACCAACAGCTTCCGTGGCAGTCCCCTTTA
 CCATGCAGCAATAGCCTCCCTGCAACGTGCACAACCTGGCCAGAGTAAAGTGGCAGCTGGTTACAGGACT
 CGGAAGAGATGGACAGGTGTGCAGAAGATCTTGACATTGCCAGTCAAACCTTGTGGAACCTAGCAAACCT
 CCTGCAAAATTTGGAAATACTTCAGAGAACTCAGTCAGCACCTAACTTTACTGACATGCAGGCTAACTGT
 GTAGATATTTCAAAGAAAGACAAGCGGGTCACAAGACGATGGAGAACAAAAAGTGTGAGCAAAAGATACAA
 AAATACAACTGCAGGAAGGGCCACCCGCGAAGGGCCAGTTCAGCACAACTCGGCGCCGCGCAGAGGCTAGC
 GGCAGCAGTGGCTACAACAGTTCCTTTCAGTGTACCATGTCACCAGTTCGTTGATTCCTCCAACCCC
 AACCTTTGTGCAGATATTGAATTCAGACTCCCCCTAGCCACCTCACTGACCCTCGGAAAGTTCAACAG
 ATTATACAAAGCTGCAAGAAGAATTTGTCTAATCGCACAGAAAGTGCATTCTTTTTGAAGTGCATT
 TAATAGCATAGCTATAGAGAAGGAGAAGCTGAAGCAGATGGTTTTCCGAGCAGGATCACAGTAAAGGCCAC
 AGCACGCAGATGGCACGGCTCCGACAGTCACTGTCTCAGGCACTCAACCGAATGCTGAACTAAGGAGTC
 GGTTGAACAGAATACATTCAGAGTCTATTATTTGTGATCAGGTTGTGAGTGAATATATTCTAGCCC
 TGATGAGGCTGGTGAGCAATCCATGTCAGTCTCCCCTTATCACAGCAAGTAGCCAATGAGAGCCGCTC
 TCCATGTCAGAGTCTGTTTCTGAGTCTTTGATGCCCAAGAGGTGCTCCTCTGCAAGTTCGTGAGAGA
 ATGAGGCTTCAGATGATGAGTCTTACATCAGTGTGAGTGATAATATATCTGAAGACAACACCAGTGT
 TGCAGACAATATTTCTCGGCAAACTCTGAATGGGGAGCTTACAGGAGGGCCCTCCGAAATGGGCGTCGA
 GCATGCCCTGCCAGCTCCTGTGCTGACACCAGTAACATTAACCTGTGGAATATCTTGAGGAACAACATTG
 GTAAGAGCTGTCTAAAGTCTCTATGCCTGTGGAGCTAAACGAGCCGCTCAACACCTGCAGCACCTCTG
 TGAGGAAATGGAATACAGCGAGCTCCTGGACAAGGCTTCGGAAACTGATGATCCATATGAGCGCATGGTT
 CTCGTTGCCGATTTGCAGTTTCAGGATACTGCTCCACCTATTTTCAGAGCAGGAAGTAAGCCATTCAACC
 CAGTCTTGGGGAGACTTATGAATGCATTAGAGAAGACAAGGGATTCCGCTTTTTCTCAGAACAGGTTAG
 CCATCATCCCCATTTCTGCCTGTCACTGTGAATCAAAGAAATTTGTGTTTTGGCAAGATATCAGATGG
 AAAACAAGTTCTGGGGGAAGTCGATGGAAATCCTGCCTGTTGGAACACTGAATGTCATGCTTCAAAGT
 ATGGAGATTACTATGTGTGGAATAAAGTCAACACTTGCATACACAACATCCTCAGTGGGAGAAGATGGAT
 AGAACATTATGGAGAAGTAACCATCAGAAATACCAAAGCAGTGTGTTGCATTTGCAAACCTCACATTTGTC
 AAGGTGAATTATTGGAATCTAACATGAATGAAGTCCAGGGGGTGGTATAGATCAGGAGGGGAAGGCGG
 TGTACCGCTGTTTGGAAAGTGGCATGAAGGACTCTACTGTGGTGTGGCCCCCTCTGCAAAGTGCATTTG
 GAGACCAGGTTCCATGCCAACAACTATGAGCTGTACTATGGCTTACAAGGTTTGTATTGAGCTCAAT
 GAGTTAGATCCAGTACTAAAAGATCTCCTTCCACCAACAGACGCCGGTCCGGCCAGATCAAAGATTTT
 TGGAAGAAGGAAATTTAGAAGCTGCAGCATCAGAGAAGCAAAGAGTAGAGGAACTCCAGAGATCTCGGAG
 ACGATATATGGAAGAAAACAATCTTGAACATATACAAAATTTTTAAAAAGTTATTGATGCCAATCAA
 AGAGAAGCTGGGTTTCTAACGACACTACTGGGAGCTTCGAAAGGACCCTGGGTTTAGCAAAGTAGACA
 GCCCTGTTCTTTGG

ACGCGTACGCGGCCGCTCGAGCAGAAACTCATCTCAGAAGAGGATCTGGCAGCAAATGATATCCTGGATT
 ACAAGGATGACGACGATAAGGTTTAA

Protein Sequence: >RC216041 representing NM_145739
 Red=Cloning site Green=Tags(s)

MHQLSLIRGNRGRSIIHILERTASSSTEPSVSRQLLEPEPVPLSKEADSWEIEGLKIGQTNVQKPKDHEG
 FMLKRRKRWPLKGWHKRFVLDNGMLKYSKAPLDIQKGVHGSIDVGLSVMSIKKKARRIDLDT EEHIYHL
 KVKSQDFDAWVSKLRHHRLYRQNEIVRSPRDASFHIFPSTSTAESSPAANVSVMGKMQPNSFPWQSPL
 PCSNSLPATCTTGQSKVAAWLQDSEEMDRCAEDLAHCQSNLVELSKLLQNLEILQRTQSAPNFTDMQANC
 VDISKDKRVTRRWRTKSVSKDTKIQLQEGPPAKGQFSTTRRRQRLLAAAVATTVPFSATMSPVRLHSSNP
 NLCADIEFQTPPSHLTDPLESSTDYTKLQEEFCLIAQKVHSLKSAFNIAIEKEKPKQMVSEQDHSKGH
 STQMARLRQSLSQALNQNALERSRLNRIHSESIICDQVVSVNIIPSPDEAGEQIHVSLPLSQQVANESRL
 SMSESVSEFFDAQEVLLSASSSENEASDDESYISDVSDNISDNTSVADNISRQILNGELTGGAFRNGRR
 ACLPAPCPDTSNINLWNILRNNIGKDLKVSMPVELNEPLNTLQHLCEEMEYSELLDKASETDDPYERMV
 LVAFAVSGYCSTYFRAGSKPFNPVLGETYECIREDKGFRFFSEQVSHPPISACHCESKNFVFWQDIRW
 KNKFWGKSM EILPVGTLNVM LPKYGDYVWNKVTTCIHNILSGRRWIEHYGEVTRINTKSSVICIKLTFV
 KVNWYNSNMNEVQGVVIDQEGKAVYRLFQKWHGLYCGVAPSAKCIWRPGSMPTNYELLYGTRFAIELN
 ELDPVLKDLLPPTDARFRPDQRFLEEGLNLEAAASEKQRVEELQRSRRRYMEENLEHIPKFFKKVIDANQ
 REAWWSNDTYWELRKDPGFSKVDSPVLW

TRTRPLEQKLISEEDLAANDILDYKDDDDKV

Chromatograms: https://cdn.origene.com/chromatograms/mg2919_g09.zip

Restriction Sites: SgfI-MluI

Cloning Scheme:

Cloning sites used for ORF Shuttling:



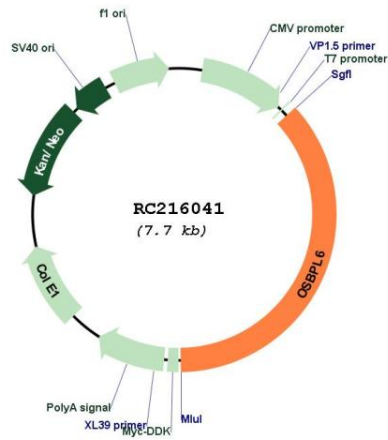
* The last codon before the Stop codon of the ORF

ACCN: NM_145739

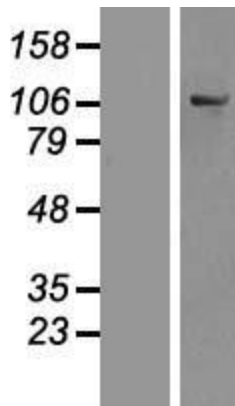
ORF Size: 2814 bp

OTI Disclaimer:	The molecular sequence of this clone aligns with the gene accession number as a point of reference only. However, individual transcript sequences of the same gene can differ through naturally occurring variations (e.g. polymorphisms), each with its own valid existence. This clone is substantially in agreement with the reference, but a complete review of all prevailing variants is recommended prior to use. More info
OTI Annotation:	This clone was engineered to express the complete ORF with an expression tag. Expression varies depending on the nature of the gene.
Components:	The ORF clone is ion-exchange column purified and shipped in a 2D barcoded Matrix tube containing 10ug of transfection-ready, dried plasmid DNA (reconstitute with 100 ul of water).
Reconstitution Method:	<ol style="list-style-type: none">1. Centrifuge at 5,000xg for 5min.2. Carefully open the tube and add 100ul of sterile water to dissolve the DNA.3. Close the tube and incubate for 10 minutes at room temperature.4. Briefly vortex the tube and then do a quick spin (less than 5000xg) to concentrate the liquid at the bottom.5. Store the suspended plasmid at -20°C. The DNA is stable for at least one year from date of shipping when stored at -20°C.
RefSeq:	NM_145739.3
RefSeq Size:	3548 bp
RefSeq ORF:	2817 bp
Locus ID:	114880
UniProt ID:	Q9BZF3
Cytogenetics:	2q31.2
MW:	106.7 kDa
Gene Summary:	This gene encodes a member of the oxysterol-binding protein (OSBP) family, a group of intracellular lipid receptors. Most members contain an N-terminal pleckstrin homology domain and a highly conserved C-terminal OSBP-like sterol-binding domain. Transcript variants encoding different isoforms have been identified. [provided by RefSeq, Jul 2008]

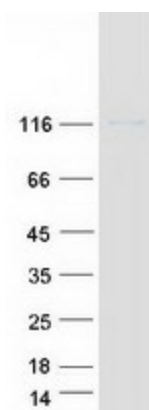
Product images:



Circular map for RC216041



Western blot validation of overexpression lysate (Cat# [LY407869]) using anti-DDK antibody (Cat# [TA50011-100]). Left: Cell lysates from untransfected HEK293T cells; Right: Cell lysates from HEK293T cells transfected with RC216041 using transfection reagent MegaTran 2.0 (Cat# [TT210002]).



Coomassie blue staining of purified OSBPL6 protein (Cat# [TP316041]). The protein was produced from HEK293T cells transfected with OSBPL6 cDNA clone (Cat# RC216041) using MegaTran 2.0 (Cat# [TT210002]).