

Product datasheet for **RC216038**

Semaphorin 3E (SEMA3E) (NM_012431) Human Tagged ORF Clone

Product data:

Product Type:	Expression Plasmids
Product Name:	Semaphorin 3E (SEMA3E) (NM_012431) Human Tagged ORF Clone
Tag:	Myc-DDK
Symbol:	Semaphorin 3E
Synonyms:	coll-5; M-SEMAH; M-SemaK; SEMAH
Mammalian Cell Selection:	Neomycin
Vector:	pCMV6-Entry (PS100001)
E. coli Selection:	Kanamycin (25 ug/mL)



[View online »](#)

ORF Nucleotide
Sequence:

>RC216038 representing NM_012431
Red=Cloning site Blue=ORF Green=Tags(s)

TTTTGTAATACGACTCACTATAGGGCGGCCGGGAATTCGTGACTGGATCCGGTACCGAGGAGATCTGCC
GCCCGCATCGCC

ATGGCATCCGCGGGCACCATTATCACCTTGCTCCTGTGGGTTACTTACTGGAGCTTTGGACAGGAGGTC
ATACAGCTGATACTACCCACCCCGTTACGCCTGTACATAAAGAGCTTTGAATCTGAACAGAACATC
AATATTTTCATAGCCCTTTTGGATTTCTTGATCTCCATACAAATGCTGCTGGATGAATCAAGAGAGGCTC
TTCGTGGGAGGCAGGACCTTGTATATCCCTCAGCTTGGAGAGAATCAGTGACGGCTATAAAGAGATAC
ACTGGCCGAGTACAGCTCTAAAAATGGAAGAATGCATAATGAAGGGAAAAGATGCGGGTGAATGTGCAAA
TTATGTTCCGGTTTTGCATCACTATAACAGGACACCTTCTGACCTGTGGTACTGGAGCTTTTGATCCA
GTTTGTGCCTTCATCAGAGTTGGATATCATTTGGAGGATCCTCTGTTTCCCTGGAATCACCCAGATCTG
AGAGAGGAAGGGCAGATGTCTTTTGACCCAGCTCCTCTTCATCTCCACTTTAATTGGTAGTGAATT
GTTTGTGGACTCTACAGTGACTACTGGAGCAGAGACGCTGCGATCTTCCGAGCATGGGGCAGTGGCC
CATATCCGCACTGAGCATGACGATGAGCGTCTGTTGAAAGAACAAAATTTGTAGGTTTCATACATGATTC
CTGACAATGAAGACAGAGATGACAACAAAGTATATTTCTTTTTTACTGAGAAGGCACTGGAGGCAGAAAA
CAATGCTCACGCAATTTACACAGGGTCGGGCGACTCTGTGTGAATGATGTAGGAGGGCAGAGAATACTG
GTGAATAAGTGGAGCACTTTCTAAAAGCGAGACTCGTTTGCTCAGTACCAGGAATGAATGGAATTGACA
CATATTTTGTGAATTAGAGGACGTTTTTTGCTACCTACCAGAGATCATAAGAATCCAGTGATATTTGG
ACTCTTTAACTACCAGTAATATTTTTCGAGGGCATGCTATATGTGTCTATCACATGTCTAGCATTCCG
GCAGCCTTCAACGGACCATATGCACATAAGGAAGACCTGAATACCACTGGTCACTATGAAGGAAAAG
TCCCTTATCCAAGGCCTGGTTCTTGCCAGCAAAGTAAATGGAGGGAGATACGGAACCAACCAAGGACTA
TCCTGATGATGCCATCCGATTTGCAAGAAGTCATCCACTAATGTACCAGGCCATAAAACCTGCCATAAAA
AAACCAATATTGGTAAAAACAGATGAAAAATATAACCTGAAACAAATAGCAGTAGATCGAGTGGAAGCTG
AGGATGGCCAATATGACGCTTTGTTTATTGGGACAGATAATGGAATTGTGCTGAAAGTAATCACAATTTA
CAACCAAGAAATGGAATCAATGGAAGAAGTAATTCTAGAAGAACTTCAGATATTCAGGATCCAGTTCTCT
ATTATTTCTATGGAGATTTCTTCAAAGCGGCAACAGCTGTATATTGGATCTGCTTCTGCTGTGGCTCAAG
TCAGATCCATCACTGTGACATGTATGGAAGTCTTGTGCTGACTGCTGCCTGGCTCGAGACCTTACTG
TGCTGGGATGGCATATCTGCTCCCGTATTACCCAACAGGCACACATGCAAAAAGCGTTTCCGGAGA
CAAGATGTTTCGACATGGAATGCAGCTCAGCAGTCTTTGGACAACAGTTTGTGGGGATGCTTTGGATA
AGACTGAAGAACATCTGGCTTATGGCATAGAGAACAACAGTACTTTGCTGGAATGTACCCACGATCTTT
ACAAGCGAAAGTTATCTGGTTTGTACAGAAAGGACGTGAGACAAGAAAAGAGGAGGTGAAGACAGATGAC
AGAGTGGTTAAGATGGACCTTGGTTTACTTCTTCTAAGGTTACACAAATCAGATGCTGGGACCTATTTTT
GCCAGACAGTAGAGCATAGCTTTGTCCATACGGTCCGTAATAACCTTTGGAGGTAGTGGAAAGAGGAGAA
AGTCGAGGATATGTTTAAACAAGGACGATGAGGAGGACAGGCATCACAGGATGCCTTGTCTGCTCAGAGT
AGCATCTCGCAGGGAGCAAAACCATGGTACAAGGAATCTTGCAGCTGATCGGTTATAGCAACTCCAGA
GAGTGGAAAGTACTGCGAGAAAGTATGGTGCACAGATAGAAAGGAAAAAGCTTAAAAATGTACCCTC
CAAGTGAAGTATGCCAACCCCTCAGAAAAGAAGCTCCGTTCAAACCTGAGCATTACCGCTGCCAGG
CACACGCTGGACTCC

ACGCGGCCGCTCGAGCAGAACTCATCTCAGAAGAGGATCTGGCAGCAAATGATATCCTGGA
TTACAAGGATGACGACGATAAGGTTTAA

Protein Sequence: >RC216038 representing NM_012431
Red=Cloning site Green=Tags(s)

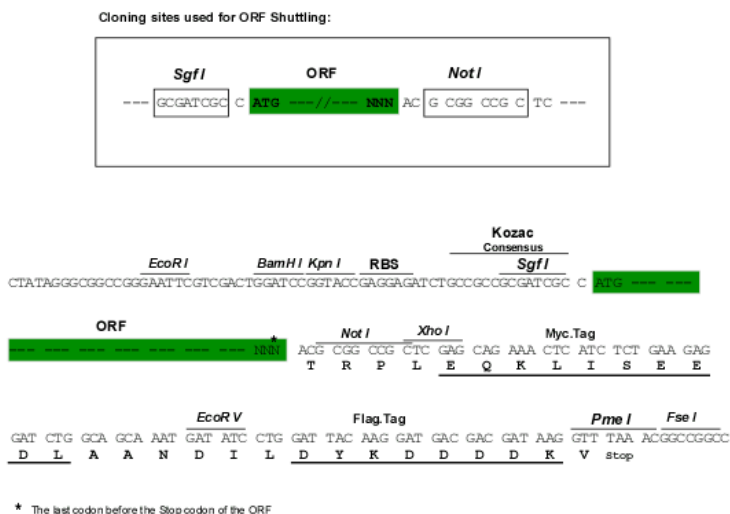
MASAGHIITLLLWGYLLELWTGGHTADTTHPRLRLSHKELLNLRNRTSIFHSPFGFLDLHTMLLDEYQERL
FVGGRDLVYSLSLERISDGYKEIHWPSTALKMEECIMKGDAGECANYVRVLHHYNRTHLLTCGTGAFDP
VCAFIRVGYHLEDPLFHLESRSEGRGRCPDFPSSSFISTLIGSELFAGLYSDYWSRDAAIFRSMGRLA
HIRTEHDDERLLKEPKFVGSYMIPDNEDRDDNKVYFFFTEKALEAENNAHAIYTRVGRLCVNDVGGQRIL
VNKWSTFLKARLVCSVPGMNGIDTYFDELEDVFLLPTRDHKNPVIIFGLFNNTSNIFRGHAICVYHMSSIR
AAFNGPYAHKEGPEYHWSVYEGKVPYPRPGSCASKVNGGRYGTTKDYPDDAIRFARSHPLMYQAIKPAHK
KPILVKTDGKYNLQIAVDRVEAEDGQYDVLFIGTDNGIVLKVITIIYNQEMESMEEVILEELQIFKDPVP
IISMEISSKRQQLYIGSASAVAQVRFHHCDMYGSACADCCLARDPYCAWDGISCSSRYPTGTHAKRRFR
QDVRHGNAQQCFGQQFVGDALDKTEEHLAYGIENNSTLLECTPRSLQAKVIWFVQKGRETRKEEVKTDD
RVVKMDLGLLFLRLHKSDAGTYFCQTVESFVHTVRKITLEVVVEEKVEDMFKDDEEDRHRMPCPAQS
SISQGAKPWYKEFLQLIGYSNFQVVEEYCEKVWCTDRKRKCLKMSPSKWKYANPQEKKLRKPEHYRLPR
HTLDS

TRRLEQKLISEEDLAANDILDYKDDDDKV

Chromatograms: https://cdn.origene.com/chromatograms/mk6813_c03.zip

Restriction Sites: Sgfl-NotI

Cloning Scheme:



ACCN: NM_012431

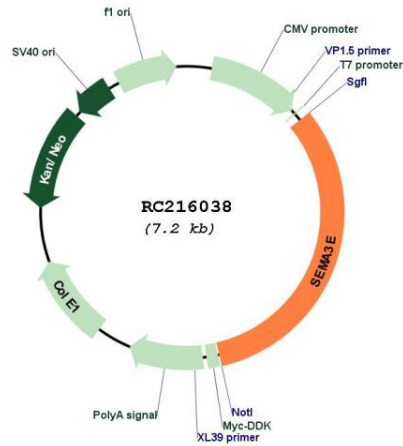
ORF Size: 2325 bp

OTI Disclaimer: Due to the inherent nature of this plasmid, standard methods to replicate additional amounts of DNA in E. coli are highly likely to result in mutations and/or rearrangements. Therefore, OriGene does not guarantee the capability to replicate this plasmid DNA. Additional amounts of DNA can be purchased from OriGene with batch-specific, full-sequence verification at a reduced cost. Please contact our customer care team at custsupport@origene.com or by calling 301.340.3188 option 3 for pricing and delivery.

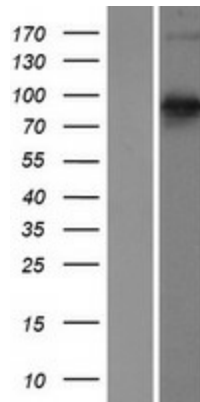
The molecular sequence of this clone aligns with the gene accession number as a point of reference only. However, individual transcript sequences of the same gene can differ through naturally occurring variations (e.g. polymorphisms), each with its own valid existence. This clone is substantially in agreement with the reference, but a complete review of all prevailing variants is recommended prior to use. [More info](#)

OTI Annotation:	This clone was engineered to express the complete ORF with an expression tag. Expression varies depending on the nature of the gene.
Components:	The ORF clone is ion-exchange column purified and shipped in a 2D barcoded Matrix tube containing 10ug of transfection-ready, dried plasmid DNA (reconstitute with 100 ul of water).
Reconstitution Method:	<ol style="list-style-type: none">1. Centrifuge at 5,000xg for 5min.2. Carefully open the tube and add 100ul of sterile water to dissolve the DNA.3. Close the tube and incubate for 10 minutes at room temperature.4. Briefly vortex the tube and then do a quick spin (less than 5000xg) to concentrate the liquid at the bottom.5. Store the suspended plasmid at -20°C. The DNA is stable for at least one year from date of shipping when stored at -20°C.
RefSeq:	<u>NM_012431.3</u>
RefSeq Size:	6474 bp
RefSeq ORF:	2328 bp
Locus ID:	9723
UniProt ID:	<u>O15041</u>
Cytogenetics:	7q21.11
Domains:	Sema, ig, PSI
Protein Families:	Secreted Protein
Protein Pathways:	Axon guidance
MW:	89 kDa
Gene Summary:	Semaphorins are a large family of conserved secreted and membrane associated proteins which possess a semaphorin (Sema) domain and a PSI domain (found in plexins, semaphorins and integrins) in the N-terminal extracellular portion. Based on sequence and structural similarities, semaphorins are put into eight classes: invertebrates contain classes 1 and 2, viruses have class V, and vertebrates contain classes 3-7. Semaphorins serve as axon guidance ligands via multimeric receptor complexes, some (if not all) containing plexin proteins. This gene encodes a class 4 semaphorin. This gene encodes a class 3 semaphorin. Multiple transcript variants encoding different isoforms have been found for this gene. [provided by RefSeq, May 2010]

Product images:



Circular map for RC216038



Western blot validation of overexpression lysate (Cat# [LY415758]) using anti-DDK antibody (Cat# [TA50011-100]). Left: Cell lysates from untransfected HEK293T cells; Right: Cell lysates from HEK293T cells transfected with RC216038 using transfection reagent MegaTran 2.0 (Cat# [TT210002]).