

## Product datasheet for **RC216035**

### **BMP1 (NM\_006128) Human Tagged ORF Clone**

#### **Product data:**

Product Type:	Expression Plasmids
Product Name:	BMP1 (NM_006128) Human Tagged ORF Clone
Tag:	Myc-DDK
Symbol:	BMP1
Synonyms:	bone morphogenetic protein 1; FLJ44432; PCOLC; PCP; pCP-2; procollagen C-endopeptidase; procollagen C-proteinase; TLD
Mammalian Cell Selection:	Neomycin
Vector:	pCMV6-Entry (PS100001)
E. coli Selection:	Kanamycin (25 ug/mL)



[View online »](#)

**ORF Nucleotide Sequence:**

>RC216035 representing NM\_006128  
 Red=Cloning site Blue=ORF Green=Tags(s)

TTTTGTAATACGACTCACTATAGGGCGGCCGGAATTCGTCGACTGGATCCGGTACCGAGGAGATCTGCC  
 GCC**CGGATCGCC**

ATGCCCGCGTGGCCCGCTGCCGTGCTGCTCGGGCTGCTGCTCCCAGCTCCCGGCCGGCCGCTGG  
 ACTTGGCCGACTACACCTATGACCTGGCGGAGGAGGACGACTCGGAGCCCTCAACTACAAAGACCCTG  
 CAAGGCGGCTGCCTTTCTGGGGACATTGCCCTGGACGAAGAGGACCTGAGGGCCTTCCAGGTACAGCAG  
 GCTGTGGATCTCAGACGGCACACAGCTCGTAAGTCTCCATCAAAGTGCAGTTCAGGAAACACTTCTA  
 CCCCCAGCTGCCAGAGCACCAACGGGCAGCCTCAGAGGGGAGCCTGTGGGAGATGGAGAGGTAGATCCCG  
 TAGCCGGCGGGCGGACGTCGCCAGCAGAGCGTGTGTGGCCGATGGGGTCATCCCTTTGTCTATTGGG  
 GAAACTTCACTGGTAGCCAGAGGGCAGTCTCCGGCAGGCCATGAGGCACTGGGAGAAGCACACCTGTG  
 TCACCTTCTGGAGCGCACTGACGAGGACAGCTATATTGTGTTACCTATCGACCTTGGGGTGTGCTC  
 CTACGTGGGTGCGCGCGGGGGCCCCAGGCCATCTCCATCGCAAGAACTGTGACAAGTTTCGGCATT  
 GTGGTCCACGAGCTGGGCCACGTCGTGCGCTTCTGGCAGCAACACTCGGCCAGACCGGGACCGCCACG  
 TTTCCATCGTTTCGTGAGAACATCCAGCCAGGGCAGGAGTAACTTCTGAAGATGGAGCCTCAGGAGGT  
 GGAGTCCCTGGGGGAGACCTATGACTTCGACAGCATCATGCATTACGCTCGGAACACATTCTCCAGGGGC  
 ATCTTCTGGATACCAATTGTCCCAAGTATGAGGTGAACGGGGTAAACCTCCCATTGGCCAAAGGACAC  
 GGCTCAGCAAGGGGGACATTGCCAAGCCCGCAAGCTTACAAGTGCCAGCCTGTGGAGAGACCCTGCA  
 AGACAGCACAGGCAACTTCTCTCCCTGAATACCCCAATGGCTACTCTGCTCACATGCACTGCGTGTGG  
 CGCATCTCTGCACACCCGGGGAGAAGATCATCTGAACCTCACGTCCCTGGACCTGTACCGCAGCCGCC  
 TGTGCTGGTACGACTATGTGGAGTCCGAGATGGCTTCTGGAGGAAGGGCCCTCCGAGCCGCTTCTG  
 CGGGTCCAAACTCCCTGAGCCTATCGTCTCCACTGACAGCCGCTCTGGGTGAATTCCGCAGCAGCAGC  
 AATTGGGTGGAAAGGGCTTCTTTGCACTACGAAGCCATCTGCGGGGGTATGTGAAAAAGGACTATG  
 GCCACATTCAATCGCCAACTACCCAGACGATTACCGGCCAGCAAAGTCTGCATCTGGCGGATCCAGGT  
 GTCTGAGGGCTTCCACGTGGCCTCACATTCCAGTCTTTGAGATTGAGCGCCACGACAGCTGTGCTAC  
 GACTATCTGGAGGTGCGCGACGGGCACAGTGAGAGCAGCACCTCATCGGGCGCTACTGTGGCTATGAGA  
 AGCCTGATGACATCAAGAGCACGTCCAGCCGCTCTGGCTCAAGTTCGTCTCTGACGGGTCCATTAACAA  
 AGCGGGCTTTGCCGCAACTTTTTCAAAGAGGTGGACGAGTGTCTCGGCCAACCGGGGGCTGTGAG  
 CAGCGGTGCCTCAACACCCTGGCAGCTACAAGTGCAGCTGTGACCCGGGTACGAGCTGGCCCCAGACA  
 AGCGCCGCTGTGAGGCTGCCTGTGGCGGATTCTCACCAGCTCAACGGTCCATCACCAGCCCGGGCTG  
 GCCAAGGAGTACCCCCCAACAAGAACTGCATCTGGCAGCTGGTGGCCCCACCAGTACCGCATCTCC  
 CTGCACTTTGACTTCTTTGAGACAGAGGGCAATGATGTGTGCAAGTACGACTTCGTGGAGGTGCGCAGTG  
 GACTCACAGCTGACTCCAAGCTGCATGGCAAGTCTGTGGTTCTGAGAAGCCCGAGGTATCACCTCCCA  
 GTACAACAATGCGCGTGGAGTTCAAGTCCGACAACACCGTGTCCAAAAAGGGCTTCAAGGCCACTTCT  
 TTCTCAGTCTTGGAGGGGGCAGGGGACCGACACTCACATCTATCAGGCCCTGGAGTTACTGCTCTGCCCC  
 ATGCCCTGGTGCACACTGTCCCCCCCCACCCTCAGCCCTGCACGGAGACACACGCCCCACAGCACAC  
 ACATGTGCACACACATTGCCCATCGCACAAAGAACTGCAGAGGACCCCACTGGGGGCATCGAGGCTC  
 AGCCCTCAGGGCCCGGGCATCTGACTCTGGCCCCCAGGAGGGGAGCTATTTGGACTTTTGGGACACCC  
 ACCGAGGAGACCCTAAGCCAAGAAGGAGAAGAAAGAGCCTGAAGACCTTCAGTCTGACCCCTGCCACCT  
 CCGGGGCATTTGGGCACTG

**ACGCGT**ACGCGGGCGCTCGAGCAGAACTCATCTCAGAAGAGGATCTGGCAGCAAATGATATCTGGATT  
 ACAAGGATGACGACGATAAGGTTTAA

**Protein Sequence:** >RC216035 representing NM\_006128  
 Red=Cloning site Green=Tags(s)

MPGVARLPLLLGLLLLPRPGRPLDLADYTYDLAEEDDSEPLNYKDPCKAAAF LGDIALDEEDLRAFVQQ  
 AVDLRRHTARKSSIKAAVPGNTSTPSCQSTNGQPQRGACGRWRGRSRRRAATSRPERVWPDGVIPFVIG  
 GNFTGSQRAVFRQAMRHWEKHTCVTFLERTDEDSYIVFTYRPGCCSYVGRGGGPQAISIGKNCDFGI  
 VVHELGHVVGFWEHTRPDRDRHVSIVRENIQPGQEYNFLKMEPQEVESLGETYDFDSIMHYARNTFSRG  
 IFLDTIIVPKYEVNGVKPPIGQRTRLSKGDIAQARKLYKCPACGETLQDSTGNFSSPEYPNGYSAHMHCVW  
 RISVTPGEKIILNFTSLDLYRSRLCWYDYVEVRDGFWRKAPLRGRFCGSKLPEPIVSTDSRLWVEFRSS  
 NWWGKGF FAVYE AICGGDVKKDYGHIQSPNYPDDYRPSKVCIWRIQVSEGFHVGLTFQSFEIERHDS  
 CAY DYLEVRDGHSESSTLIGRYCGYEKPD DIKSTSSRLWLFVSDGSINKAGFAVNFKEVDECSRPNRGGCE  
 QRCLNTLGSYKCSDDPGYELAPDKRCEAACGGFLTKLNGSITSPGWPKEYPPNKNCIWQLVAPTQYRIS  
 LQFDF FETEGNDVCKYDFVEVRSGLTADSKLHGKFCGSEKPEVITSQYNNMRVEFKSDNTVSKKGFKAHF  
 FSVLEGAGDRHSHLSGLELLLCPHALVDTVPAPPSALHGDTAHTHTHVHTHCPIAQETCRGPPLGASRL  
 SPQGPGLTLAPQEGSYLDFWDTHRGDPKPRRRRSLKTFSLTPATFRGIWAL

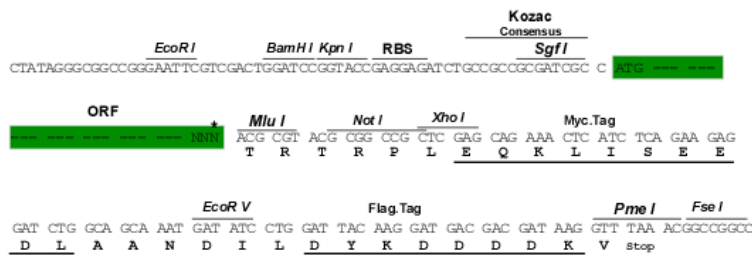
TRTRPLEQKLISEEDLAANDILDYKDDDDKV

**Chromatograms:** [https://cdn.origene.com/chromatograms/mg3141\\_f02.zip](https://cdn.origene.com/chromatograms/mg3141_f02.zip)

**Restriction Sites:** SgfI-MluI

**Cloning Scheme:**

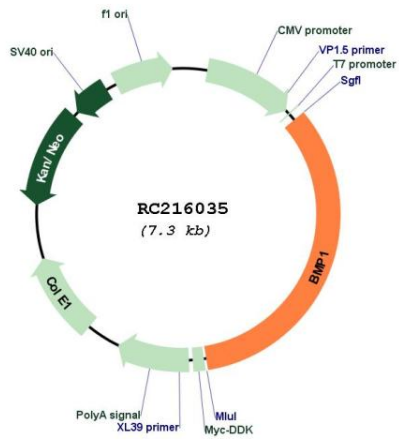
Cloning sites used for ORF Shuttling:



\* The last codon before the Stop codon of the ORF

<b>ACCN:</b>	NM_006128
<b>ORF Size:</b>	2469 bp
<b>OTI Disclaimer:</b>	The molecular sequence of this clone aligns with the gene accession number as a point of reference only. However, individual transcript sequences of the same gene can differ through naturally occurring variations (e.g. polymorphisms), each with its own valid existence. This clone is substantially in agreement with the reference, but a complete review of all prevailing variants is recommended prior to use. <a href="#">More info</a>
<b>OTI Annotation:</b>	This clone was engineered to express the complete ORF with an expression tag. Expression varies depending on the nature of the gene.
<b>Components:</b>	The ORF clone is ion-exchange column purified and shipped in a 2D barcoded Matrix tube containing 10ug of transfection-ready, dried plasmid DNA (reconstitute with 100 ul of water).
<b>Reconstitution Method:</b>	<ol style="list-style-type: none"><li>1. Centrifuge at 5,000xg for 5min.</li><li>2. Carefully open the tube and add 100ul of sterile water to dissolve the DNA.</li><li>3. Close the tube and incubate for 10 minutes at room temperature.</li><li>4. Briefly vortex the tube and then do a quick spin (less than 5000xg) to concentrate the liquid at the bottom.</li><li>5. Store the suspended plasmid at -20°C. The DNA is stable for at least one year from date of shipping when stored at -20°C.</li></ol>
<b>RefSeq:</b>	<a href="#">NM_006128.2</a> , <a href="#">NP_006119.1</a>
<b>RefSeq Size:</b>	2853 bp
<b>RefSeq ORF:</b>	2471 bp
<b>Locus ID:</b>	649
<b>Cytogenetics:</b>	8p21.3
<b>Domains:</b>	CUB, Astacin, EGF_CA, ZnMc, EGF, EGF
<b>Protein Families:</b>	Druggable Genome, Protease
<b>MW:</b>	93.1 kDa
<b>Gene Summary:</b>	This gene encodes a protein that is capable of inducing formation of cartilage in vivo. Although other bone morphogenetic proteins are members of the TGF-beta superfamily, this gene encodes a protein that is not closely related to other known growth factors. This gene is expressed as alternatively spliced variants that share an N-terminal protease domain but differ in their C-terminal region. [provided by RefSeq, Aug 2008]

Product images:



Circular map for RC216035