

Product datasheet for RC216034

NEGR1 (NM_173808) Human Tagged ORF Clone

Product data:

Product Type: Expression Plasmids
Product Name: NEGR1 (NM_173808) Human Tagged ORF Clone
Tag: Myc-DDK
Symbol: NEGR1
Synonyms: DMML2433; IGLON4; KILON; Ntra
Mammalian Cell Selection: Neomycin
Vector: pCMV6-Entry (PS100001)
E. coli Selection: Kanamycin (25 ug/mL)
ORF Nucleotide Sequence: >RC216034 representing NM_173808
Red=Cloning site Blue=ORF Green=Tags(s)

TTTTGTAATACGACTCACTATAGGGCGGCCGGAATTCGTCGACTGGATCCGGTACCGAGGAGATCTGCC
GCC**CGATCGCC**

ATGGACATGATGCTGTTGGTGCAGGGTCTTGTGCTCGAACCAGTGGCTGGCGGCGGTCTCTCAGCC
TGTGCTGCCTGTACCCTCTGCCTCCCGGCTGGACAGAGTGTGGACTTCCCCTGGGCGGCCGTGGACAA
CATGATGGTCAGAAAAGGGGACACGGCGGTGCTTAGGTGTTATTTGGAAGATGGAGCTTCAAAGGGTGCC
TGGCTGAACCGGTCAAGTATTATTTTTGCGGGAGGTGATAAGTGGTCAGTGGATCCTCGAGTTTCAATTT
CAACATTGAATAAAAAGGGACTACAGCCTCCAGATACAGAATGTAGATGTGACAGATGATGGCCCATACAC
GTGTTCTGTTTCACTCAACATACACCCAGAACAATGCAGGTGCATCTAACTGTGCAAGTTCTCTCTAAG
ATATATGACATCTCAAATGATATGACCGTCAATGAAGGAACCAACGTCACTCTTACTTGTGGCCACTG
GGAAACCAGAGCCTTCCATTTCTTGGCGACACATCTCCCATCAGCAAAACCATTTGAAAATGGACAATA
TTTGGACATTTATGGAATTACAAGGGACCAGGCTGGGGAATATGAATGCAGTGGGAAAATGATGTGTCA
TTCCCAGATGTGAGGAAAGTAAAAGTTGTTGTCAACTTTGCTCCTACTATTCAGGAAATTAATCTGGCA
CCGTGACCCCGGACGCAGTGGCCTGATAAGATGTGAAGTGCAGGTGTGCCGCCTCCAGCCTTTGAATG
GTACAAAAGGAGAGAAGAAGCTCTTCAATGGCCAACAAGGAATTATTATTCAAAATTTAGCACAAGATCC
ATTCTCACTGTTACCAACGTGACACAGGAGCACTTCGGCAATTACCTGTGTGGCTGCCAACAAGCTAG
GCACAACCAATGCGAGCCTGCCTCTTAACCCTCCAAGTACAGCCAGATGGAATTACCGGAGCCGCTGA
TGTCTTTTCTCCTGCTGGTACCTTGTGTTGACACTGTCTCTTTACCAGCATATTCTACCTGAAGAAT
GCCATTCTACAA

ACGCGTACGCGGCCGCTCGAGCAGAAACTCATCTCAGAAGAGGATCTGGCAGCAATGATATCCTGGATT
ACAAGGATGACGACGATAAGGTTTAA



[View online »](#)

Protein Sequence: >RC216034 representing NM_173808
Red=Cloning site Green=Tags(s)

MDMMLLVQGACCSNQLAAVLLSLCCLLPSCLPAGQSVDFPWAAVDNMMVRKGD AVLRCYLEDGASKGA
 WLNRRSSIIIFAGGDKWSVDPVRSISTLNKRDSLQIQNVDTDDGPYTC SVQTQHTPRTMQVHLTVQVPPK
 IYDISNDMTVNEGTVNLTCLATGKPEPSISWRHISPSAKPFENGQYLDIYGITRDQAGEYEC SAENDVS
 FPDVVRKVKVVVNFAPTIQEIKSGTVTPGRSGLIRCEGAGVPPPAFEWYKGEKLFNGQQGII IQNFSTRS
 ILTVTNVTQEHFGNYTCVAANKLGTTNASLPLNPPSTAQYGITGSADVLFSCWYLVLTLS SFTSIFYLKN
 AILQ

TRTRPLEQKLISEEDLAANDILDYKDDDDKV

Chromatograms: https://cdn.origene.com/chromatograms/mg4137_c05.zip

Restriction Sites: SgfI-MluI

Cloning Scheme:



* The last codon before the Stop codon of the ORF

ACCN: NM_173808

ORF Size: 1062 bp

OTI Disclaimer: The molecular sequence of this clone aligns with the gene accession number as a point of reference only. However, individual transcript sequences of the same gene can differ through naturally occurring variations (e.g. polymorphisms), each with its own valid existence. This clone is substantially in agreement with the reference, but a complete review of all prevailing variants is recommended prior to use. [More info](#)

OTI Annotation: This clone was engineered to express the complete ORF with an expression tag. Expression varies depending on the nature of the gene.

Components: The ORF clone is ion-exchange column purified and shipped in a 2D barcoded Matrix tube containing 10ug of transfection-ready, dried plasmid DNA (reconstitute with 100 ul of water).

Reconstitution Method:

1. Centrifuge at 5,000xg for 5min.
2. Carefully open the tube and add 100ul of sterile water to dissolve the DNA.
3. Close the tube and incubate for 10 minutes at room temperature.
4. Briefly vortex the tube and then do a quick spin (less than 5000xg) to concentrate the liquid at the bottom.
5. Store the suspended plasmid at -20°C. The DNA is stable for at least one year from date of shipping when stored at -20°C.

RefSeq: [NM_173808.3](#)

RefSeq Size: 5669 bp

RefSeq ORF: 1065 bp

Locus ID: 257194

UniProt ID: [Q7Z3B1](#)

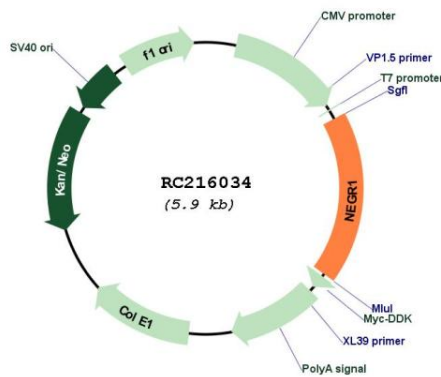
Cytogenetics: 1p31.1

Protein Pathways: Cell adhesion molecules (CAMs)

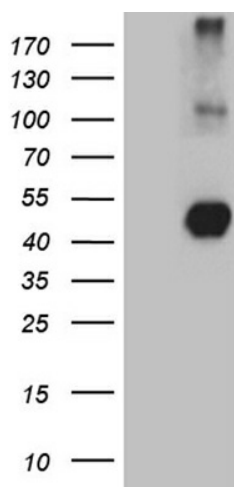
MW: 38.5 kDa

Gene Summary: May be involved in cell-adhesion. May function as a trans-neural growth-promoting factor in regenerative axon sprouting in the mammalian brain (By similarity).[UniProtKB/Swiss-Prot Function]

Product images:



Circular map for RC216034



HEK293T cells were transfected with the pCMV6-ENTRY control (Cat# [PS100001], Left lane) or pCMV6-ENTRY NEGR1 (Cat# RC216034, Right lane) cDNA for 48 hrs and lysed. Equivalent amounts of cell lysates (5 ug per lane) were separated by SDS-PAGE and immunoblotted with anti-NEGR1 (Cat# [TA810275])(1:2000).