

Product datasheet for RC216032L1

Semaphorin 3D (SEMA3D) (NM_152754) Human Tagged Lenti ORF Clone

Product data:

| | |
|---------------------------|---|
| Product Type: | Expression Plasmids |
| Product Name: | Semaphorin 3D (SEMA3D) (NM_152754) Human Tagged Lenti ORF Clone |
| Tag: | Myc-DDK |
| Symbol: | Semaphorin 3D |
| Synonyms: | coll-2; Sema-Z2 |
| Mammalian Cell Selection: | None |
| Vector: | pLenti-C-Myc-DDK (PS100064) |
| E. coli Selection: | Chloramphenicol (34 ug/mL) |
| ORF Nucleotide Sequence: | The ORF insert of this clone is exactly the same as(RC216032). |
| Restriction Sites: | SgfI-MluI |
| Cloning Scheme: | |

Cloning sites used for ORF Shuttling:



* The last codon before the Stop codon of the ORF.

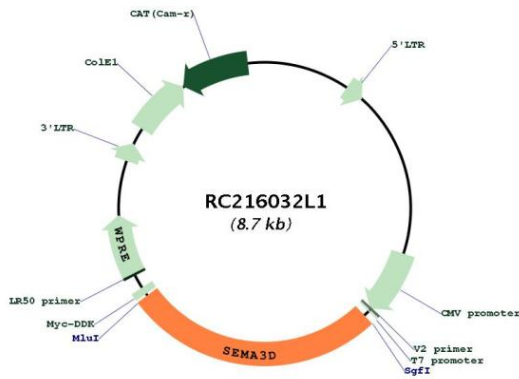
| | |
|-----------|-----------|
| ACCN: | NM_152754 |
| ORF Size: | 2331 bp |



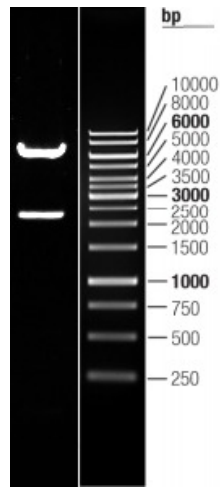
[View online »](#)

| | |
|-------------------------------|---|
| OTI Disclaimer: | The molecular sequence of this clone aligns with the gene accession number as a point of reference only. However, individual transcript sequences of the same gene can differ through naturally occurring variations (e.g. polymorphisms), each with its own valid existence. This clone is substantially in agreement with the reference, but a complete review of all prevailing variants is recommended prior to use. More info |
| OTI Annotation: | This clone was engineered to express the complete ORF with an expression tag. Expression varies depending on the nature of the gene. |
| Components: | The ORF clone is ion-exchange column purified and shipped in a 2D barcoded Matrix tube containing 10ug of transfection-ready, dried plasmid DNA (reconstitute with 100 ul of water). |
| Reconstitution Method: | <ol style="list-style-type: none">1. Centrifuge at 5,000xg for 5min.2. Carefully open the tube and add 100ul of sterile water to dissolve the DNA.3. Close the tube and incubate for 10 minutes at room temperature.4. Briefly vortex the tube and then do a quick spin (less than 5000xg) to concentrate the liquid at the bottom.5. Store the suspended plasmid at -20°C. The DNA is stable for at least one year from date of shipping when stored at -20°C. |
| RefSeq: | NM_152754.2 , NP_689967.2 |
| RefSeq Size: | 6276 bp |
| RefSeq ORF: | 2334 bp |
| Locus ID: | 223117 |
| UniProt ID: | O95025 |
| Cytogenetics: | 7q21.11 |
| Domains: | IG, PSI |
| Protein Families: | Transmembrane |
| Protein Pathways: | Axon guidance |
| MW: | 89.5 kDa |
| Gene Summary: | This gene encodes a member of the semaphorin III family of secreted signaling proteins that are involved in axon guidance during neuronal development. The encoded protein contains an N-terminal Sema domain, an immunoglobulin like domain and a C-terminal basic domain. The protein encoded by this gene binds neuropilin and plays an important role in cardiovascular development. [provided by RefSeq, Aug 2016] |

Product images:



Circular map for RC216032L1



Double digestion of RC216032L1 using SgfI and MluI