

Product datasheet for RC216027

LY6G6C (NM_025261) Human Tagged ORF Clone

Product data:

Product Type: Expression Plasmids
Product Name: LY6G6C (NM_025261) Human Tagged ORF Clone
Tag: Myc-DDK
Symbol: LY6G6C
Synonyms: C6orf24; G6c; NG24
Mammalian Cell Selection: Neomycin
Vector: pCMV6-Entry (PS100001)
E. coli Selection: Kanamycin (25 ug/mL)
ORF Nucleotide Sequence: >RC216027 ORF sequence
Red=Cloning site Blue=ORF Green=Tags(s)

TTTTGTAATACGACTCACTATAGGGCGCCGGAATTCGTCGACTGGATCCGGTACCGAGGAGATCTGCC
GCC**CGATCGCC**

ATGAAAGCCCTTATGCTGCTCACCTGTCTGTTCTGCTCTGCTGGGTCTCAGCTGACATTCGCTGCTCACT
CCTGCTACAAGGTCCTGTGCTGGGCTGTGTGGACCGGCAGTCTGCCGCTGGAGCCAGGACAGCAATG
CCTGACAACACATGCATACCTTGGTAAGATGTGGGTTTTCTCCAATCTGCGCTGTGGCACACCAGAAGAG
CCCTGTCAGGAGGCTTCAACCAAACCAACCGTAAGCTGGGTCTGACATATAACACCACCTGCTGCAACA
AGGACAACTGCAACAGCGCAGGACCCCGCCACTCCAGCCCTGGGCCTTGCTTCTTACCTCCTTGGC
TGGCCTTGGCCTCTGGCTGCTGCAC

ACGCGTACGCGGCCGCTCGAGCAGAACTCATCTCAGAAGAGGATCTGGCAGCAAATGATATCCTGGATT
ACAAGGATGACGACGATAAGGTTTAA

Protein Sequence: >RC216027 protein sequence
Red=Cloning site Green=Tags(s)
MKALMLLTLVLLCWVSADIRCHSCYKVPVLCVDRQSCRLEPGQQCLTTHAYLGKMWVFSNLRCGTPEE
PCQEAFNQTNRKLGLTYNTTCCNKDNCNSAGPRPTPALGLVFLTSLAGLGLWLLH

TRTRPLEQKLISEEDLAANDILDYKDDDDKV

Chromatograms: https://cdn.origene.com/chromatograms/mk6454_b01.zip

Restriction Sites: SgfI-MluI



[View online »](#)

Cloning Scheme:


ACCN: NM_025261

ORF Size: 375 bp

OTI Disclaimer: The molecular sequence of this clone aligns with the gene accession number as a point of reference only. However, individual transcript sequences of the same gene can differ through naturally occurring variations (e.g. polymorphisms), each with its own valid existence. This clone is substantially in agreement with the reference, but a complete review of all prevailing variants is recommended prior to use. [More info](#)

OTI Annotation: This clone was engineered to express the complete ORF with an expression tag. Expression varies depending on the nature of the gene.

Components: The ORF clone is ion-exchange column purified and shipped in a 2D barcoded Matrix tube containing 10ug of transfection-ready, dried plasmid DNA (reconstitute with 100 ul of water).

- Reconstitution Method:**
1. Centrifuge at 5,000xg for 5min.
 2. Carefully open the tube and add 100ul of sterile water to dissolve the DNA.
 3. Close the tube and incubate for 10 minutes at room temperature.
 4. Briefly vortex the tube and then do a quick spin (less than 5000xg) to concentrate the liquid at the bottom.
 5. Store the suspended plasmid at -20°C. The DNA is stable for at least one year from date of shipping when stored at -20°C.

RefSeq: [NM_025261.1](#), [NP_079537.1](#)

RefSeq Size: 932 bp

RefSeq ORF: 378 bp

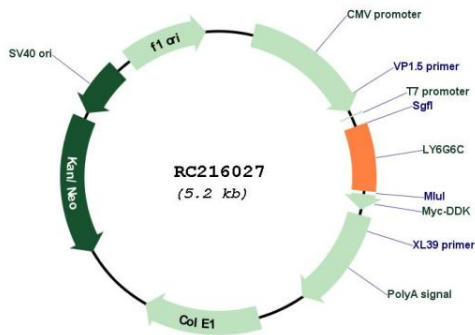
Locus ID: 80740

UniProt ID: [O95867](#)

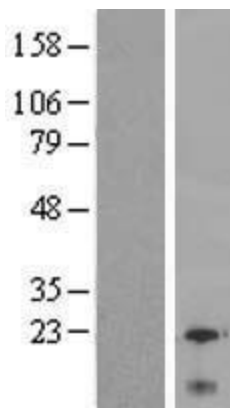
Cytogenetics: 6p21.33
Protein Families: Secreted Protein
MW: 13.8 kDa

Gene Summary: LY6G6C belongs to a cluster of leukocyte antigen-6 (LY6) genes located in the major histocompatibility complex (MHC) class III region on chromosome 6. Members of the LY6 superfamily typically contain 70 to 80 amino acids, including 8 to 10 cysteines. Most LY6 proteins are attached to the cell surface by a glycosylphosphatidylinositol (GPI) anchor that is directly involved in signal transduction (Mallya et al., 2002 [PubMed 12079290]).[supplied by OMIM, Mar 2008]

Product images:



Circular map for RC216027



Western blot validation of overexpression lysate (Cat# [LY410819]) using anti-DDK antibody (Cat# [TA50011-100]). Left: Cell lysates from untransfected HEK293T cells; Right: Cell lysates from HEK293T cells transfected with RC216027 using transfection reagent MegaTran 2.0 (Cat# [TT210002]).