

Product datasheet for RC216021L1

NEK8 (NM_178170) Human Tagged Lenti ORF Clone

Product data:

| | |
|---------------------------|--|
| Product Type: | Expression Plasmids |
| Product Name: | NEK8 (NM_178170) Human Tagged Lenti ORF Clone |
| Tag: | Myc-DDK |
| Symbol: | NEK8 |
| Synonyms: | JCK; NEK12A; NPHP9; RHPD2 |
| Mammalian Cell Selection: | None |
| Vector: | pLenti-C-Myc-DDK (PS100064) |
| E. coli Selection: | Chloramphenicol (34 ug/mL) |
| ORF Nucleotide Sequence: | The ORF insert of this clone is exactly the same as(RC216021). |
| Restriction Sites: | SgfI-MluI |
| Cloning Scheme: | |

Cloning sites used for ORF Shuttling:



* The last codon before the Stop codon of the ORF.

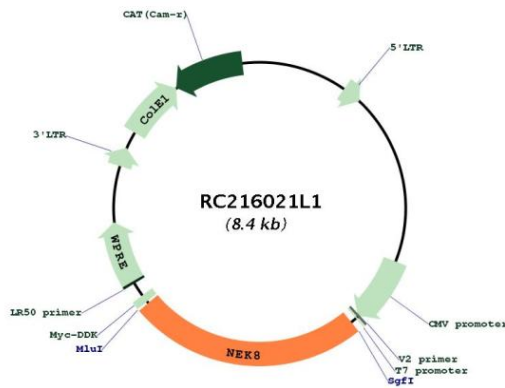
| | |
|-----------|-----------|
| ACCN: | NM_178170 |
| ORF Size: | 2076 bp |



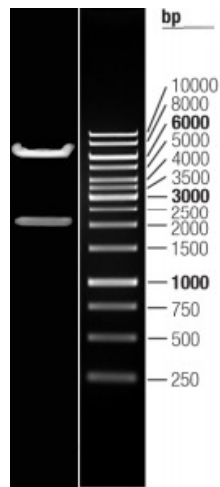
[View online >](#)

| | |
|-------------------------------|---|
| OTI Disclaimer: | The molecular sequence of this clone aligns with the gene accession number as a point of reference only. However, individual transcript sequences of the same gene can differ through naturally occurring variations (e.g. polymorphisms), each with its own valid existence. This clone is substantially in agreement with the reference, but a complete review of all prevailing variants is recommended prior to use. More info |
| OTI Annotation: | This clone was engineered to express the complete ORF with an expression tag. Expression varies depending on the nature of the gene. |
| Components: | The ORF clone is ion-exchange column purified and shipped in a 2D barcoded Matrix tube containing 10ug of transfection-ready, dried plasmid DNA (reconstitute with 100 ul of water). |
| Reconstitution Method: | <ol style="list-style-type: none">1. Centrifuge at 5,000xg for 5min.2. Carefully open the tube and add 100ul of sterile water to dissolve the DNA.3. Close the tube and incubate for 10 minutes at room temperature.4. Briefly vortex the tube and then do a quick spin (less than 5000xg) to concentrate the liquid at the bottom.5. Store the suspended plasmid at -20°C. The DNA is stable for at least one year from date of shipping when stored at -20°C. |
| RefSeq: | NM_178170.2 |
| RefSeq Size: | 2858 bp |
| RefSeq ORF: | 2079 bp |
| Locus ID: | 284086 |
| UniProt ID: | Q86SG6 |
| Cytogenetics: | 17q11.2 |
| Protein Families: | Druggable Genome, Protein Kinase |
| MW: | 74.6 kDa |
| Gene Summary: | This gene encodes a member of the serine/threonine protein kinase family related to NIMA (never in mitosis, gene A) of <i>Aspergillus nidulans</i> . The encoded protein may play a role in cell cycle progression from G2 to M phase. Mutations in the related mouse gene are associated with a disease phenotype that closely parallels the juvenile autosomal recessive form of polycystic kidney disease in humans. [provided by RefSeq, Jul 2008] |

Product images:



Circular map for RC216021L1



Double digestion of RC216021L1 using SgfI and MluI