

Product datasheet for **RC216021**

NEK8 (NM_178170) Human Tagged ORF Clone

Product data:

Product Type:	Expression Plasmids
Product Name:	NEK8 (NM_178170) Human Tagged ORF Clone
Tag:	Myc-DDK
Symbol:	NEK8
Synonyms:	JCK; NEK12A; NPHP9; RHPD2
Mammalian Cell Selection:	Neomycin
Vector:	pCMV6-Entry (PS100001)
E. coli Selection:	Kanamycin (25 ug/mL)



[View online »](#)

ORF Nucleotide Sequence:

>RC216021 representing NM_178170
 Red=Cloning site Blue=ORF Green=Tags(s)

TTTTGTAATACGACTCACTATAGGGCGGCCGGAATTCGTCGACTGGATCCGGTACCGAGGAGATCTGCC
 GCC**CGGATCGCC**

ATGGAGAAGTACGAGCGGATCCGAGTGGTGGGGAGAGGTGCCTTCGGATTGTGCACCTGTGCCTGCGAA
 AGGCTGACCAGAAGCTGGTGATCATCAAGCAGATTCCAGTGGAACAGATGACCAAGGAAGAGCGGCAGGC
 AGCCCAGAATGAGTGCCAGGTCCTCAAGCTGCTCAACCACCCCAATGTCATTGAGTACTACGAGAACTTC
 CTGGAAGACAAAGCCCTTATGATCGCCATGGAATATGCACCAGGCGGCACTCTGGCTGAGTTCATCCAAA
 AGCGCTGTAATCCCTGCTGGAGGAGGAGACCATCTGCACCTTCTTCGTGCAGATCTGCTTGCCTGCA
 TCATGTGCACACCACCTCATCTGCACCAGACCTCAAGACCCAGAACATCCTGCTTGACAAAACCCGC
 ATGGTCGTAAGATCGGTGATTCGGCATCTCCAAGATCCTTAGCAGCAAGAGCAAGGCCTACACGGTGG
 TGGTACCCCATGCTATATCTCCCCTGAGCTGTGTGAGGGCAAGCCCTACAACCAGAAGAGTGACATCTG
 GGCCTGGGCTGTCTCTACGAGCTGGCCAGCCTCAAGAGGGCTTTCGAGGCTGCGAACTTGCCAGCA
 CTGGTGCTGAAGATCATGAGTGGCACCTTTCACCTATCTCTGACCGGTACAGCCCTGAGCTTCGCCAGC
 TGGTCTGAGTCTACTAGCCTGGAGCCTGCCAGCGGCCACCACTCAGCCACATCATGGCACAGCCCT
 CTGCATCCGTGCCCTCCTCAACCTCCACACCGAGTGGGCAAGTGTCCGCATGCGGAGGGCAGAGAAGTCC
 GTGGCCCCCAGCAACACAGGGAGCAGGACCACCACTGTCGCTGCAGAGGTATCCCCCGGGACCTGTGA
 GGCCAGCCATCCCACCACCACTGTCTGTCAGTGTATGCCTGGGGTGGTGGGCTGGGCACCCCTGCGGCT
 GCCAATGCTCAACACAGAGGTGGTCCAGGTGGCAGCTGGGCGCACGCAGAAAGCCGGCGTCACGCGCTCT
 GGGCGTCTCATCTGTGGAGGCCACCCCTAGGTGCAGGCGGAGGCAGTCTCCTTCTGGGGCAGTGG
 AGCAGCACAGCCCCAGTTCATCTCGCTTTCCTGGAGGGCCAGTCGGGTGTACCATCAAGCACGTGGC
 CTGTGGGGACTTCTTCACTGCCTGCCTGACTGACAGAGGCATCATCATGACATTCCGCAGCGGCAGCAAT
 GGGTGCCTAGGCCATGGCAGCCTCACTGACATCAGCCAGCCACCACTTGTGGAGGCTTGTGGGCTATG
 AAATGGTGCAGGTGGCCTGTGGGCCTCTCACGTGCTGGCCCTGTCCACTGAGCGAGAACTATTTGCCTG
 GGGCCGTGGAGACAGCGGAGACTGGGGCTAGGCACCAGGGAGTCCCACAGCTGCCCCAGCAGGTGCC
 ATGCCCCAGGACAGGAAGCTCAGCGAGTTGTATGTGGTATCGATTCTCCATGATCCTCACTGTGCCTG
 GCCAAGCCCTAGCCTGTGGGAGCAACAGGTTCAACAAGCTGGGCCTGGACCACCTCTCCCTGGGGGAGGA
 GCCTGTCCCCCACCAGCAAGTGGAGGAGGCCCTGAGCTTCACTACTAGGCTCTGCACCCCTGGACCAG
 GAGCCTCTGCTGAGTATAGACCTGGGCACTGCTCACTCAGCTGCTGTGACTGCCTCGGGTATTGCTACA
 CTTTTGGCAGCAATCAGCACGGACAGTTGGGCACCAATACTCGCCGAGGCAGTCGGGCACCCCTGAAGGT
 CCAAGGCCTTGAGGGCATCAAGATGGCAATGGTAGCCTGTGGGGATGCCTTCACTGTAGCTATTGGGGCA
 GAGAGCGAAGTGTACTCTTGGGGCAAAGGGGCGCGAGGTGATTGGGAAGGAGGGATGAGGATGCCGGAC
 TCCCTCGGCCAGTGCAGTTGGATGAGACACACCCTTACACGGTACTCCGTGTCCTGTTGCCATGGAAA
 CACCCTCTGGCTGTTTCGATCGGTCACAGATGAGCCGGTCCCCCCC

ACGCGTACGCGGGCCGCTCGAGCAGAACTCATCTCAGAAGAGGATCTGGCAGCAATGATATCCTGGATT
 ACAAGGATGACGACGATAAGGTTTAA

Protein Sequence: >RC216021 representing NM_178170
Red=Cloning site Green=Tags(s)

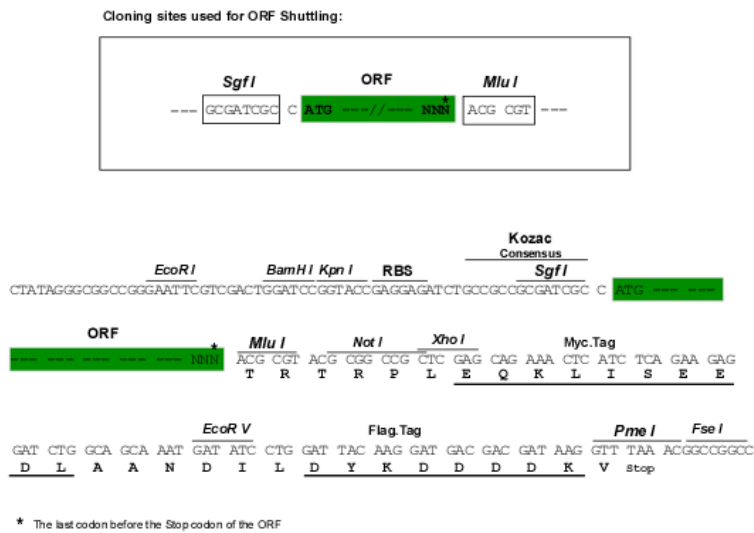
```
MEKYERIRVVGRGAFGIVHLCLRKADQKLVIKQIPVEQMTKEERQAAQNECQVLKLLNHPNVEIYYENF
LEDKALMIAMEYAPGGTLAEFIQKRCNSLLEEETILHFFVQILLALHHVHHTLILHRDLKTQNILLDKHR
MVKIGDFGISKILSSKSKAYTVVGTTPCYISPELCEGKPNQKSDI WALGCVLYELASLKRAFEANLPA
LVLKIMSGTFAPISDRYSPELRQLVLSLLSLEPAQRPPLSHIMAOPLCIRALLNLHTDVGSVRMRRAEKS
VAPSN TGSRTTSVRCRGI PRGPV RPAIP PPLSSVYAWGGGLGTP LRLPMLNTEV VQVAAGRTQKAGVTRS
GRLILWEAPPLGAGGGSLLPGAVEQPQPQFISRFLEGQSGVTIKHVACGDFFTA CLTD RGIIMTFGSGSN
GCLGHGSLTDISOPTIVEALLGYEMVQVACGASHVLALSTERELFAWGRGDSGRLGLGTRESHSCPQQVP
MPPGQEAQRVVCIDSSMILTVPGQALACGSNRFNKLGLDHL SLGEEPVP HQVVEALSF TLLGSAPLDQ
EPLL SIDLGT AHSAAVTASGDCYTFGSNQHGQLGTNTRRSRAPCKVQGLEGIKMAMVACGDAFTVAIGA
ESEVYSWGKGARGRLGRRDEDAGLPRPVQLDETHPYTVT SVSCCHGNTLLAVRSVTDEPVPP
```

TRTRPLEQKLISEEDLANDILDYKDDDDKV

Chromatograms: https://cdn.origene.com/chromatograms/mg4123_f07.zip

Restriction Sites: SgfI-MluI

Cloning Scheme:



ACCN: NM_178170

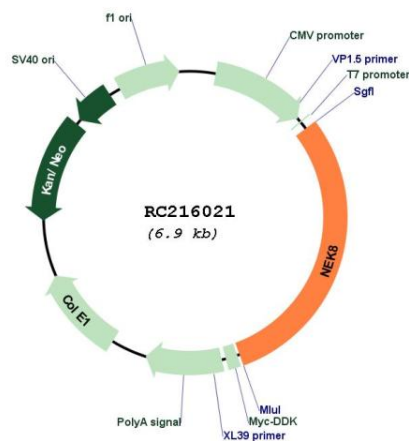
ORF Size: 2076 bp

OTI Disclaimer: The molecular sequence of this clone aligns with the gene accession number as a point of reference only. However, individual transcript sequences of the same gene can differ through naturally occurring variations (e.g. polymorphisms), each with its own valid existence. This clone is substantially in agreement with the reference, but a complete review of all prevailing variants is recommended prior to use. [More info](#)

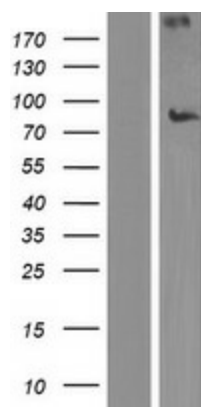
OTI Annotation: This clone was engineered to express the complete ORF with an expression tag. Expression varies depending on the nature of the gene.

Components:	The ORF clone is ion-exchange column purified and shipped in a 2D barcoded Matrix tube containing 10ug of transfection-ready, dried plasmid DNA (reconstitute with 100 ul of water).
Reconstitution Method:	<ol style="list-style-type: none">1. Centrifuge at 5,000xg for 5min.2. Carefully open the tube and add 100ul of sterile water to dissolve the DNA.3. Close the tube and incubate for 10 minutes at room temperature.4. Briefly vortex the tube and then do a quick spin (less than 5000xg) to concentrate the liquid at the bottom.5. Store the suspended plasmid at -20°C. The DNA is stable for at least one year from date of shipping when stored at -20°C.
RefSeq:	NM_178170.3
RefSeq Size:	2858 bp
RefSeq ORF:	2079 bp
Locus ID:	284086
UniProt ID:	Q86SG6
Cytogenetics:	17q11.2
Protein Families:	Druggable Genome, Protein Kinase
MW:	74.6 kDa
Gene Summary:	This gene encodes a member of the serine/threonine protein kinase family related to NIMA (never in mitosis, gene A) of <i>Aspergillus nidulans</i> . The encoded protein may play a role in cell cycle progression from G2 to M phase. Mutations in the related mouse gene are associated with a disease phenotype that closely parallels the juvenile autosomal recessive form of polycystic kidney disease in humans. [provided by RefSeq, Jul 2008]

Product images:



Circular map for RC216021



Western blot validation of overexpression lysate (Cat# [LY406010]) using anti-DDK antibody (Cat# [TA50011-100]). Left: Cell lysates from untransfected HEK293T cells; Right: Cell lysates from HEK293T cells transfected with RC216021 using transfection reagent MegaTran 2.0 (Cat# [TT210002]).