

Product datasheet for RC216002

SLC25A33 (NM_032315) Human Tagged ORF Clone

Product data:

Product Type:	Expression Plasmids
Product Name:	SLC25A33 (NM_032315) Human Tagged ORF Clone
Tag:	Myc-DDK
Symbol:	SLC25A33
Synonyms:	BMSC-MCP; PNC1
Mammalian Cell Selection:	Neomycin
Vector:	pCMV6-Entry (PS100001)
E. coli Selection:	Kanamycin (25 ug/mL)
ORF Nucleotide Sequence:	>RC216002 ORF sequence Red=Cloning site Blue=ORF Green=Tags(s)

TTTTGTAATACGACTCACTATAGGGCGGCCGGAATTCGTCGACTGGATCCGGTACCGAGGAGATCTGCC
GCC**CGGATCGCC**

ATGGCGACGGGCGCCAGCAGAAGGAGAACACGCTGCTTACCTCTTCGCCGGCGGGTGTGGAGGCACAG
TTGGTGTATTTTCACTTGTCCACTAGAAGTCATTAAGACACGGTTGCAGTCTTCAAGATTAGCTCTCCG
GACAGTCTACTATCCTCAGGTTTCATCTGGGGACCATTAGTGGAGCTGGAATGGTGAGACCAACATCCGTG
ACACCTGGACTCTTTCAGGTTCTGAAGTCGATCTTGGAGAAAGAGGGACCAAAGTCACTTTTLAGAGGCT
TGGGTCCAAATTTGGTTGGAGTTGCACCATCAAGGGCTGTATACTTTGCATGTTACTCCAAGCCAAAGA
GCAATTTAATGGCATTTTCGTGCCTAACAGCAATATTGTGCATATTTTCTCAGCTGGCTCTGCAGCTTTT
ATCACAAATTCCTTAATGAATCCTATATGGATGGTTAAAACCCGAATGCAGCTAGAACAGAAAGTGAGGG
GCTCTAAGCAGATGAATACACTCCAGTGTGCTCGTTACGTTTACCAGACCGAAGGCATTCGTGGCTTCTA
TAGAGGATTAAGTGCCTCGTATGCTGGAATTTCCGAAACTATAATCTGCTTTGCTATTTATGAAAGTTTA
AAGAAGTATCTGAAAGAAGCTCCATTAGCCTCTTCTGCAAATGGGACTGAGAAAAATCCACAAGTTTTT
TTGGACTTATGGCAGCTGCTGCTTTTCTAAGGGCTGTGCCTCCTGCATTGCTTATCCACACGAAGTCAT
AAGGACGAGGCTCCGGGAAGAGGGCACCAAGTACAAGTCTTTTGTCCAGACGGCGCGCTGGTGTCCGG
GAAGAAGGCTACCTTGCCCTTTATAGAGGACTGTTTGCCAGCTTATCCGGCAGATCCCAAACTACTGCCA
TTGTGTTGCTACTTATGAGTTAATTGTGTACCTGTTAGAAGACCGTACTCAG

ACGCGTACGCGGCCGCTCGAGCAGAACTCATCTCAGAAGAGGATCTGGCAGCAAATGATATCCTGGATT
ACAAGGATGACGACGATAAGGTTTAA



[View online »](#)

Protein Sequence: >RC216002 protein sequence
 Red=Cloning site Green=Tags(s)

MATGGQQKENTLLHLFAGGCGGTVGAIFTCPLEVIKTRLQSSRLALRTVYYPQVHLGTISGAGMVRPTSV
 TPGLFQVLKSILEKEGPKSLFRGLGNLVGVAPSRVYFACYSKAKEQFNIGFV PNSNIVHIF SAGSAAF
 ITNSLMNPIWMVKTRMQLEQKVRGSKQMNTLQCARYVYQTEGIRGFYRGLTASYAGISETIICFAIYESL
 KKYLKEAPLASSANGTEKNSTSF FGLMAAAALSKGCASCIAYPHEVIRTRLREEGTKYKSFVQTARLVFR
 EEGYLAFYRGLFAQLRQIPNTAIVLSTYELIVYLLDRTQ

TRTRPLEQKLISEEDLAANDILDYKDDDDKV

Chromatograms: https://cdn.origene.com/chromatograms/mk6366_g09.zip

Restriction Sites: SgfI-MluI

Cloning Scheme:



ACCN: NM_032315

ORF Size: 963 bp

OTI Disclaimer: The molecular sequence of this clone aligns with the gene accession number as a point of reference only. However, individual transcript sequences of the same gene can differ through naturally occurring variations (e.g. polymorphisms), each with its own valid existence. This clone is substantially in agreement with the reference, but a complete review of all prevailing variants is recommended prior to use. [More info](#)

OTI Annotation: This clone was engineered to express the complete ORF with an expression tag. Expression varies depending on the nature of the gene.

Components: The ORF clone is ion-exchange column purified and shipped in a 2D barcoded Matrix tube containing 10ug of transfection-ready, dried plasmid DNA (reconstitute with 100 ul of water).

Reconstitution Method:

1. Centrifuge at 5,000xg for 5min.
2. Carefully open the tube and add 100ul of sterile water to dissolve the DNA.
3. Close the tube and incubate for 10 minutes at room temperature.
4. Briefly vortex the tube and then do a quick spin (less than 5000xg) to concentrate the liquid at the bottom.
5. Store the suspended plasmid at -20°C. The DNA is stable for at least one year from date of shipping when stored at -20°C.

RefSeq: [NM_032315.3](#)

RefSeq Size: 1476 bp

RefSeq ORF: 966 bp

Locus ID: 84275

UniProt ID: [Q9BSK2](#)

Cytogenetics: 1p36.22

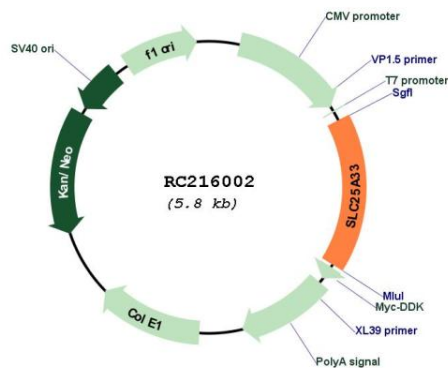
Domains: mito_carr

Protein Families: Transmembrane

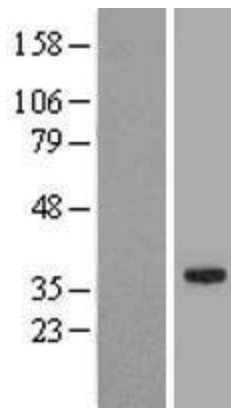
MW: 35.4 kDa

Gene Summary: SLC25A33 belongs to the SLC25 family of mitochondrial carrier proteins (Haitina et al., 2006 [PubMed 16949250]).[supplied by OMIM, Mar 2008]

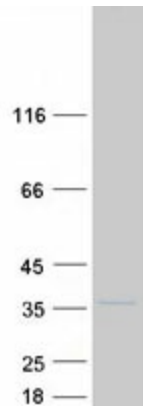
Product images:



Circular map for RC216002



Western blot validation of overexpression lysate (Cat# [LY410215]) using anti-DDK antibody (Cat# [TA50011-100]). Left: Cell lysates from untransfected HEK293T cells; Right: Cell lysates from HEK293T cells transfected with RC216002 using transfection reagent MegaTran 2.0 (Cat# [TT210002]).



Coomassie blue staining of purified SLC25A33 protein (Cat# [TP316002]). The protein was produced from HEK293T cells transfected with SLC25A33 cDNA clone (Cat# RC216002) using MegaTran 2.0 (Cat# [TT210002]).