

Product datasheet for **RC215995L2V**

Estrogen Related Receptor beta (ESRRB) (NM_004452) Human Tagged ORF Clone Lentiviral Particle

Product data:

Product Type:	Lentiviral Particles
Product Name:	Estrogen Related Receptor beta (ESRRB) (NM_004452) Human Tagged ORF Clone Lentiviral Particle
Symbol:	Estrogen Related Receptor beta
Synonyms:	DFNB35; ERR2; ERRb; ERR beta-2; ERRbeta2; ESRL2; NR3B2
Mammalian Cell Selection:	None
Vector:	pLenti-C-mGFP (PS100071)
Tag:	mGFP
ACCN:	NM_004452
ORF Size:	1500 bp
ORF Nucleotide Sequence:	The ORF insert of this clone is exactly the same as(RC215995).
OTI Disclaimer:	The molecular sequence of this clone aligns with the gene accession number as a point of reference only. However, individual transcript sequences of the same gene can differ through naturally occurring variations (e.g. polymorphisms), each with its own valid existence. This clone is substantially in agreement with the reference, but a complete review of all prevailing variants is recommended prior to use. More info
OTI Annotation:	This clone was engineered to express the complete ORF with an expression tag. Expression varies depending on the nature of the gene.
RefSeq:	NM_004452.2 , NP_004443.2
RefSeq Size:	2193 bp
RefSeq ORF:	1527 bp
Locus ID:	2103
UniProt ID:	O95718
Cytogenetics:	14q24.3
Protein Families:	Druggable Genome, Nuclear Hormone Receptor, Transcription Factors

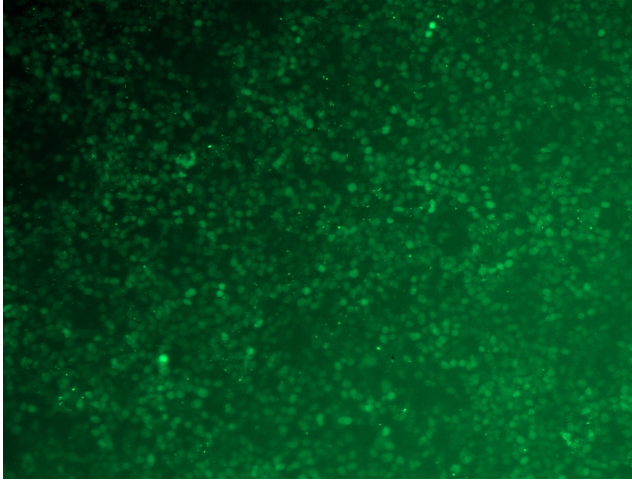


[View online »](#)

MW: 56 kDa

Gene Summary: This gene encodes a protein with similarity to the estrogen receptor. Its function is unknown; however, a similar protein in mouse plays an essential role in placental development. [provided by RefSeq, Jul 2008]

Product images:



[RC215995L2] was used to prepare Lentiviral particles using [TR30037] packaging kit. HEK293T cells were transduced with RC215995L2V particle to overexpress human ESRRB-mGFP fusion protein.