

Product datasheet for **RC215992**

MSI1 (NM_002442) Human Tagged ORF Clone

Product data:

Product Type: Expression Plasmids
 Product Name: MSI1 (NM_002442) Human Tagged ORF Clone
 Tag: Myc-DDK
 Symbol: MSI1
 Mammalian Cell Selection: Neomycin
 Vector: pCMV6-Entry (PS100001)
 E. coli Selection: Kanamycin (25 ug/mL)
 ORF Nucleotide Sequence: >RC215992 representing NM_002442
 Red=Cloning site Blue=ORF Green=Tags(s)

TTTTGTAATACGACTCACTATAGGGCGGCCGGGAATTCGTCGACTGGATCCGGTACCGAGGAGATCTGCC
 GCC**CGATCGCC**

ATGGAGACTGACGCGCCCCAGCCCGCCTCGCCTCCCCGGACTCGCCGCACGACCCCTGCAAGATGTTCA
 TCGGGGGACTCAGTTGGCAGACTACGCAGGAAGGGCTGCGCGAATACTTCGGCCAGTTCGGGGAGGTGAA
 GGAGTGTCTGGTGTGCGGGACCCCTGACCAAGAGATCCAGGGGTTTCGGCTTCGTCACTTTCATGGAC
 CAGGCGGGGTGGATAAAGTGCTGGCGCAATCGCGGCACGAGCTCGACTCCAAAACAATTGACCCTAAGG
 TGGCCTCCCTCGGCGAGCACAGCCCAAGATGGTGACTCGAACGAAGAAGATCTTTGTGGGGGGCTGTC
 GGTGAACACCACGGTGGAGGACGTGAAGCAATATTTGAGCAGTTTGGGAAGGTGGACGACGCCATGCTG
 ATGTTTGACAAAACCACCAACCGGCACCGAGGGTTTCGGGTTTGTACGTTTGTGAGAGTGAGGACATCGTGG
 AGAAAGTGTGAAATTCATTTTCATGAAATCAACAACAAAATGGTGGAATGTAAGAAAGCTCAGCCAAA
 GGAGGTGATGTCGCAACGGGCTCAGCCCGGGGAGGTCTCGAGTCATGCCCTACGGAATGGACGCCTTC
 ATGCTGGGCATCGGCATGCTGGTTACCCAGGTTTCCAAGCCACAACCTACGCCAGCCGGAGTTATACAG
 GCCTCGCCCTGGCTACACCTACCAGTTCGCCAATTCGGTGTAGAGCGGACCCCTCTCCGAGCGCCCC
 AGTCTCCCGAGCTTACAGCCATTCCTCTCACTGCCTACGGACCAATGGCGCGGCAGCGCGGCAGCG
 GCTGTGGTTCGAGGGACAGGCTCTACCCCTGGACGATGGCTCCCCCTCCAGGTTTCGACTCCAGCCGCA
 CAGGGGGCTTCTGGGGACCACCAGCCCGGCCCATGGCCGAGCTCTACGGGGCGGCCAACAGGACTC
 GGGGTCAGCAGTTACATCAGCGCCGCCAGCCCTGCCCCAGCACCGGCTTCGGCCACAGTCTTGGGGG
 CCTTGATTGCCACAGCCTTACCAATGGGTACCAC

ACGCGTACGCGGCCGCTCGAGCAGAACTCATCTCAGAAGAGGATCTGGCAGCAAATGATATCCTGGATT
 ACAAGGATGACGACGATAAGGTTTAA



[View online »](#)

Protein Sequence: >RC215992 representing NM_002442
Red=Cloning site Green=Tags(s)

METDAPQPLASPDSPHDPCKMFIGGLSWQTTQEGLREYFGQFGEVKECLVMRDPLTKRSRFGFVTFMMD
 QAGVDKVLQSRHELDSKTIIDPKVAFPRRAQPKMVRTKKIFVGGLSVNTTVEDVKQYFEQFGKVDAML
 MFDKTTNRHRGFGFVTFESEDIVEKVCEIHFHEINNKMVECKKAQPKVMSPTGSARGRSRVMPYGMDF
 MLGIGMLGYPGFQATTYASRSYTLAPGYTYQFPEFRVERTPLPSAPVLPeltaIPLTAYGPMAAAAAAA
 AVVRGTGSHPWMTAPPPGSTPSRTGGFLGTTSPGPMAELYGAANQDSGVSSYISAASPAPSTFGHSLGG
 PLIATAFTNGYH

TRTRPLEQKLISEEDLAANDILDYKDDDDKV

Chromatograms: https://cdn.origene.com/chromatograms/mk6503_f02.zip

Restriction Sites: Sgfl-MluI

Cloning Scheme:

Cloning sites used for ORF Shuttling:



* The last codon before the Stop codon of the ORF

ACCN: NM_002442

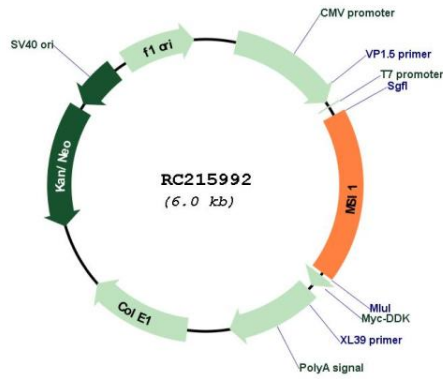
ORF Size: 1086 bp

OTI Disclaimer: Due to the inherent nature of this plasmid, standard methods to replicate additional amounts of DNA in E. coli are highly likely to result in mutations and/or rearrangements. Therefore, OriGene does not guarantee the capability to replicate this plasmid DNA. Additional amounts of DNA can be purchased from OriGene with batch-specific, full-sequence verification at a reduced cost. Please contact our customer care team at custsupport@origene.com or by calling 301.340.3188 option 3 for pricing and delivery.

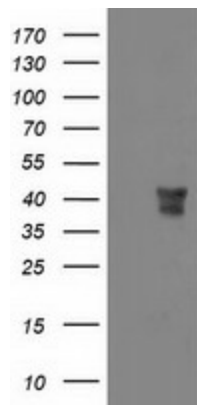
The molecular sequence of this clone aligns with the gene accession number as a point of reference only. However, individual transcript sequences of the same gene can differ through naturally occurring variations (e.g. polymorphisms), each with its own valid existence. This clone is substantially in agreement with the reference, but a complete review of all prevailing variants is recommended prior to use. [More info](#)

OTI Annotation:	This clone was engineered to express the complete ORF with an expression tag. Expression varies depending on the nature of the gene.
Components:	The ORF clone is ion-exchange column purified and shipped in a 2D barcoded Matrix tube containing 10ug of transfection-ready, dried plasmid DNA (reconstitute with 100 ul of water).
Reconstitution Method:	<ol style="list-style-type: none">1. Centrifuge at 5,000xg for 5min.2. Carefully open the tube and add 100ul of sterile water to dissolve the DNA.3. Close the tube and incubate for 10 minutes at room temperature.4. Briefly vortex the tube and then do a quick spin (less than 5000xg) to concentrate the liquid at the bottom.5. Store the suspended plasmid at -20°C. The DNA is stable for at least one year from date of shipping when stored at -20°C.
Note:	Plasmids are not sterile. For experiments where strict sterility is required, filtration with 0.22um filter is required.
RefSeq:	NM_002442.4
RefSeq Size:	2950 bp
RefSeq ORF:	1089 bp
Locus ID:	4440
UniProt ID:	O43347
Cytogenetics:	12q24.31
MW:	38.9 kDa
Gene Summary:	This gene encodes a protein containing two conserved tandem RNA recognition motifs. Similar proteins in other species function as RNA-binding proteins and play central roles in posttranscriptional gene regulation. Expression of this gene has been correlated with the grade of the malignancy and proliferative activity in gliomas and melanomas. A pseudogene for this gene is located on chromosome 11q13. [provided by RefSeq, Jul 2008]

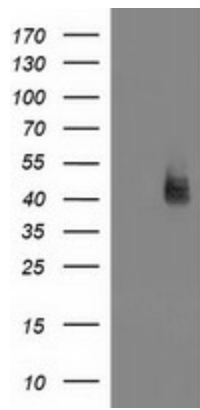
Product images:



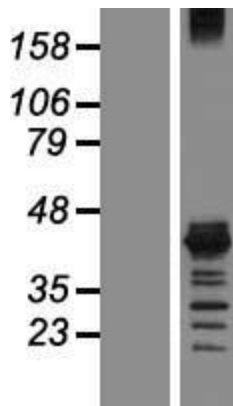
Circular map for RC215992



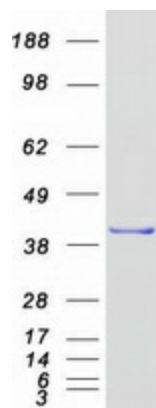
HEK293T cells were transfected with the pCMV6-ENTRY control (Cat# [PS100001], Left lane) or pCMV6-ENTRY MSI1 (Cat# RC215992, Right lane) cDNA for 48 hrs and lysed. Equivalent amounts of cell lysates (5 ug per lane) were separated by SDS-PAGE and immunoblotted with anti-MSI1 (Cat# [TA502198]). Positive lysates [LY419331] (100ug) and [LC419331] (20ug) can be purchased separately from OriGene.



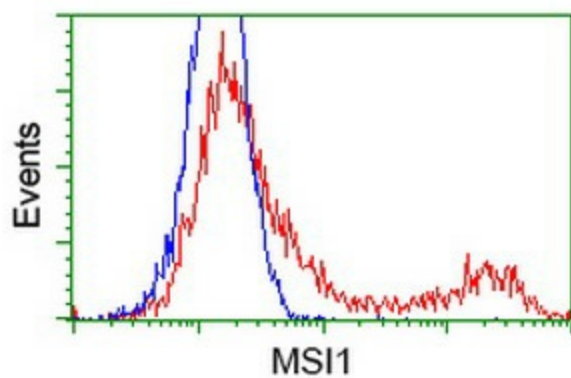
HEK293T cells were transfected with the pCMV6-ENTRY control (Left lane) or pCMV6-ENTRY MSI1 (RC215992, Right lane) cDNA for 48 hrs and lysed. Equivalent amounts of cell lysates (5 ug per lane) were separated by SDS-PAGE and immunoblotted with anti-MSI1 ([TA502254]). Positive lysates [LY419331] (100ug) and [LC419331] (20ug) can be purchased separately from OriGene.



Western blot validation of overexpression lysate (Cat# [LY419331]) using anti-DDK antibody (Cat# [TA50011-100]). Left: Cell lysates from untransfected HEK293T cells; Right: Cell lysates from HEK293T cells transfected with RC215992 using transfection reagent MegaTran 2.0 (Cat# [TT210002]).



Coomassie blue staining of purified MSI1 protein (Cat# [TP315992]). The protein was produced from HEK293T cells transfected with MSI1 cDNA clone (Cat# RC215992) using MegaTran 2.0 (Cat# [TT210002]).



HEK293T cells transfected with either RC215992 overexpress plasmid (Red) or empty vector control plasmid (Blue) were immunostained by anti-MSI1 antibody ([TA502254]), and then analyzed by flow cytometry.