

Product datasheet for **RC215991**

CCDC91 (NM_018318) Human Tagged ORF Clone

Product data:

Product Type:	Expression Plasmids
Product Name:	CCDC91 (NM_018318) Human Tagged ORF Clone
Tag:	Myc-DDK
Symbol:	CCDC91
Synonyms:	HSD8; p56
Mammalian Cell Selection:	Neomycin
Vector:	pCMV6-Entry (PS100001)
E. coli Selection:	Kanamycin (25 ug/mL)



[View online »](#)

ORF Nucleotide
Sequence:

>RC215991 representing NM_018318
Red=Cloning site Blue=ORF Green=Tags(s)

TTTTGTAATACGACTCACTATAGGGCGGCCGGAATTCGTCGACTGGATCCGGTACCGAGGAGATCTGCC
GCCGCGATCGCC

ATGGATGATGATGATTTTGGTGGTTTTGAGGCTGCGGAGACTTTTGATGGTGAAGTGGTGAACCCAAA
CAACATCTCCTGCTATTCTTGGGCTGCCTTTCCTGCAGTATCTGGAGTCCATCTTTCACCATCTTCTCC
TGAGATTGACTGGACCGTGACCACTCTTCTTCCATTGGCTGCCTCTTCTGATGCCATTATTTTCATCA
CCAGAGAATACACATGCAGCAAATAGCATTGTGAGTCAAATTTCCAAAAGCACAGATTAGCAATCAA
CACACACTCATCTGGATATCTCACTTTTTCCATTGGGTTAACTGATGAAAAAAGTAATGGAACAATTGC
CCTTGTGGATGATTCTGAGGATCCTGGAGCCAATGTATCTAACATACAGCTTCAGCAAAAAATTTCAAGT
CTGAGATTAACTCAAAGTATCTGAAGAAGAAAAACAGAGAATTAACAGGATGTGAATCATTGATGG
AAAAGCATAATGTCTTAGAAAAAGGCTTTCTAAAAGAAAAAGAGCAAGAGGCCATTTCTTTCAAGATAG
ATACAAAAGAACTTCAGGAAAAACATAAACAAGAATTGGAAGACATGAGGAAAGCTGGTCAGGAAGCCCTC
AGCATTATTGTGGATGAATATAAGGCACACTACTGCAGTCTTCAGTTAAGCAACAAGTAGAAGCTATTGAAA
AACAGTACATTTCTGCAATTGAGAAACAGGCACACAAGTGTGAGGAGTTGCTAAATGCTCAGCATCAGAG
GCTCCTTGAAATGCTAGATACAGAGAAGGAACTGTTAAAAGAAAAATAAAGGAAGCTTTGATTCAGCAA
TCTCAAGAACAGAAGGAAATATTGGAAAAGTGTGGAGGAGAAAGGCAAGAAATAAAGAGGCATTAG
TATCCGCTGCAAAGCTTGAAAAAGAGCAGTGAAGGATGCAGTTTTAAAAGTCGTAGAAGAAGAAAGAAA
AAATTTAGAAAAAGCGCATGCTGAAGAAAGGGAATTATGGAAGACAGAACATGCAAAAGATCAAGAAAA
GTATCTCAGGAAATTCAAAAAGCTATACAAGAACAAGAAAAATAAGTCAGGAACTGTTAAGGCAGCAA
TAATAGAAGAGCAGAAACGAAGTAAAAAGGCTGTGGAAGAGGAGTGAAGAAGCAAGAGATGAATTGAT
AGAGTATATAAAAGAACAGAAAAGGCTCGATCAAGTCATCCGCCAAAGAAGCCTGTCCAGTTTGAAGT
TTCTCTCCTGTGCACAGAAACAGTTAAGTGTCTTAATAGCTACGGAACAGTTGACATTGAA

ACGCGTACGCGGCCGCTCGAGCAGAACTCATCTCAGAAGAGGATCTGGCAGCAATGATATCCTGGATT
ACAAGGATGACGACGATAAGGTTTAA

Protein Sequence:

>RC215991 representing NM_018318
Red=Cloning site Green=Tags(s)

MDDDDFGGFEEAETFDGGSGETQTTSPAIPWAAFPVAVSGVHLSPEIVLDRDHSSSIGLSSDAIISS
PENTHAANSIVSQTIKPAQIQSTHTHLDISLFPGLTDEKSNGTIALVDDSEDPGANVSNIQKQKISS
LEIKLVSEEEKQRIKQDVEESLMEKHNVLEKGFLEKEQEATISFQDRYKELQEKHKQELDMRKAGHEAL
SIIIVDEYKALLQSSVKQVQVEAIEKQYISAIEKQAHKCEELLNAQHQRLLLEMLDTEKELLKEIKEALIQQ
SQEQKEILEKCLEEERQRNKEALVSAKLEKEAVKDAVLKVVVEERKNLEKAHAEEERELWKTEHAKDQEK
VSQEIQKAIQEQRKISQETVKAIIIEEQKRSEKAVEEAVKRTRDELIEYIKEQKRLDQVIRQRSLSSLEL
FLSCAQKQLSALIAATEPVDIE

TRTRPLEQKLISEEDLAANDILDYKDDDDKV

Chromatograms:

https://cdn.origene.com/chromatograms/mk8028_d02.zip

Restriction Sites:

SgfI-MluI

Cloning Scheme:


ACCN: NM_018318

ORF Size: 1323 bp

OTI Disclaimer: The molecular sequence of this clone aligns with the gene accession number as a point of reference only. However, individual transcript sequences of the same gene can differ through naturally occurring variations (e.g. polymorphisms), each with its own valid existence. This clone is substantially in agreement with the reference, but a complete review of all prevailing variants is recommended prior to use. [More info](#)

OTI Annotation: This clone was engineered to express the complete ORF with an expression tag. Expression varies depending on the nature of the gene.

Components: The ORF clone is ion-exchange column purified and shipped in a 2D barcoded Matrix tube containing 10ug of transfection-ready, dried plasmid DNA (reconstitute with 100 ul of water).

Reconstitution Method:

1. Centrifuge at 5,000xg for 5min.
2. Carefully open the tube and add 100ul of sterile water to dissolve the DNA.
3. Close the tube and incubate for 10 minutes at room temperature.
4. Briefly vortex the tube and then do a quick spin (less than 5000xg) to concentrate the liquid at the bottom.
5. Store the suspended plasmid at -20°C. The DNA is stable for at least one year from date of shipping when stored at -20°C.

RefSeq: [NM_018318.5](#)

RefSeq Size: 2352 bp

RefSeq ORF: 1326 bp

Locus ID: 55297

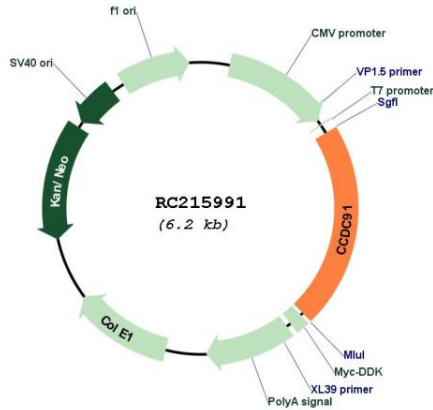
UniProt ID: [Q7Z6B0](#)

Cytogenetics: 12p11.22

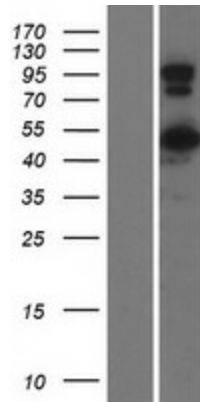
MW: 49.8 kDa

Gene Summary: Involved in the regulation of membrane traffic through the trans-Golgi network (TGN). Functions in close cooperation with the GGAs in the sorting of hydrolases to lysosomes. [UniProtKB/Swiss-Prot Function]

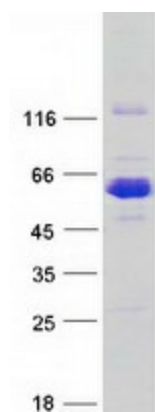
Product images:



Circular map for RC215991



Western blot validation of overexpression lysate (Cat# [LY413161]) using anti-DDK antibody (Cat# [TA50011-100]). Left: Cell lysates from untransfected HEK293T cells; Right: Cell lysates from HEK293T cells transfected with RC215991 using transfection reagent MegaTran 2.0 (Cat# [TT210002]).



Coomassie blue staining of purified CCDC91 protein (Cat# [TP315991]). The protein was produced from HEK293T cells transfected with CCDC91 cDNA clone (Cat# RC215991) using MegaTran 2.0 (Cat# [TT210002]).