

## Product datasheet for **RC215990**

### **GSTA5 (NM\_153699) Human Tagged ORF Clone**

#### Product data:

**Product Type:** Expression Plasmids  
**Product Name:** GSTA5 (NM\_153699) Human Tagged ORF Clone  
**Tag:** Myc-DDK  
**Symbol:** GSTA5  
**Mammalian Cell Selection:** Neomycin  
**Vector:** pCMV6-Entry (PS100001)  
**E. coli Selection:** Kanamycin (25 ug/mL)  
**ORF Nucleotide Sequence:** >RC215990 representing NM\_153699  
 Red=Cloning site Blue=ORF Green=Tags(s)

TTTTGTAATACGACTCACTATAGGGCGGCCGGAATTCGTCGACTGGATCCGGTACCGAGGAGATCTGCC  
 GCC**CGATCGCC**

ATGGCAGAGAAGCCCAAGCTCCACTACTCCAATGCACGGGGCAGTATGGAGTCCATTCGGTGGCTCCTGG  
 CTGCAGCTGGAGTAGAGTTGGAAGAGAAATTTCTAGAATCTGCAGAAGATTTGGACAAGTTAAGAAATGA  
 TGGGAGTTTGCTGTTCCAGCAAGTACCAATGGTTGAGATTGACGGGATGAAGCTGGTGCAGACCAGAGCC  
 ATCTTAACTACATTGCCAGCAAATACAACCTTTATGGGAAAGACATGAAGGAGAGACCCTGATTGATA  
 TGTACACAGAAGGTATAGTAGATTTGACTGAAATGATCCTTCTTCTGCTCATATGTCAACCAGGGAAAG  
 AGATGCCAAGACTGCCTTGGTCAAAGAGAAAATAAAAAATCGCTACTTCCCTGCCTTTGAAAAAGTCTTA  
 AAGAGCCACAGACAAGACTACCTTGTGGCAACAAGCTGAGCTGGGCTGACATTCACCTGGTGGAACTTT  
 TCTACTACGTGGAAGAGCTTGACTCGAGTCTTATCTCCAGCTTCCCTCTGCTGAAGGCCCTGAAAACCG  
 AATCAGCAACCTGCCACGGTGAAGAAGTTTCTGCAGCCTGGCAGCCAGAGAAAGCTCCCATGGATGAG  
 AAATCTTTAGAAGAAGCAAGGAAGATTTTCAGTTT

**ACGCGT**ACGCGGCCGCTCGAGCAGAAACTCATCTCAGAAGAGGATCTGGCAGCAAATGATATCCTGGATT  
 ACAAGGATGACGACGATAAGGTTTAA

**Protein Sequence:** >RC215990 representing NM\_153699  
 Red=Cloning site Green=Tags(s)

MAEKPKLHYSNARGSMESIRWLLAAAGVELEEKFLESAEDLDKLRNDGSLLFQQVPMVEIDGMKLVQTRA  
 ILNYIASKYNLYGKDMKERALIDMYTEGIVDLTEMILLLLICQPEERDAKTALVKEKIKNRYFPFAFEKVL  
 KSHRQDYL VGNKLSWAD IHLVELFYVEELDSSLISSFPLLKALKTRISNLPTVKKFLQPGSQRKPMPME  
 KSLEEARKIFRF

**TR**TRPLEQKLISEEDLAANDILDYKDDDDKV

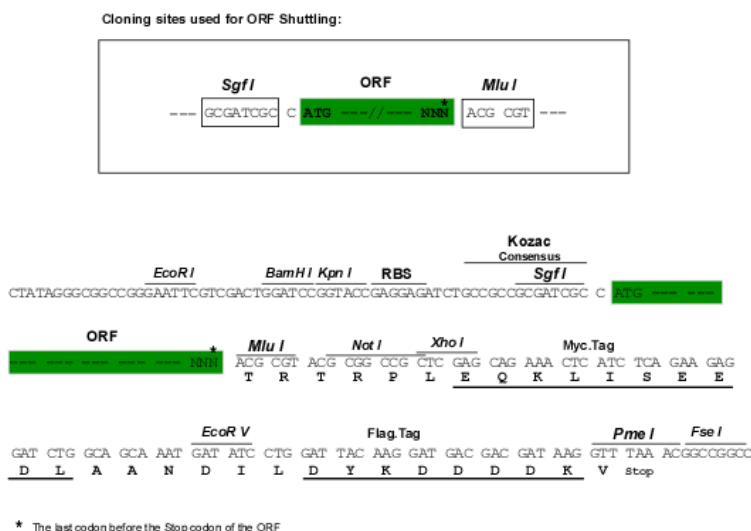


[View online »](#)

Chromatograms: [https://cdn.origene.com/chromatograms/mk6505\\_h09.zip](https://cdn.origene.com/chromatograms/mk6505_h09.zip)

Restriction Sites: SgfI-MluI

Cloning Scheme:



ACCN: NM\_153699

ORF Size: 666 bp

OTI Disclaimer: The molecular sequence of this clone aligns with the gene accession number as a point of reference only. However, individual transcript sequences of the same gene can differ through naturally occurring variations (e.g. polymorphisms), each with its own valid existence. This clone is substantially in agreement with the reference, but a complete review of all prevailing variants is recommended prior to use. [More info](#)

OTI Annotation: This clone was engineered to express the complete ORF with an expression tag. Expression varies depending on the nature of the gene.

Components: The ORF clone is ion-exchange column purified and shipped in a 2D barcoded Matrix tube containing 10ug of transfection-ready, dried plasmid DNA (reconstitute with 100 ul of water).

Reconstitution Method:

1. Centrifuge at 5,000xg for 5min.
2. Carefully open the tube and add 100ul of sterile water to dissolve the DNA.
3. Close the tube and incubate for 10 minutes at room temperature.
4. Briefly vortex the tube and then do a quick spin (less than 5000xg) to concentrate the liquid at the bottom.
5. Store the suspended plasmid at -20°C. The DNA is stable for at least one year from date of shipping when stored at -20°C.

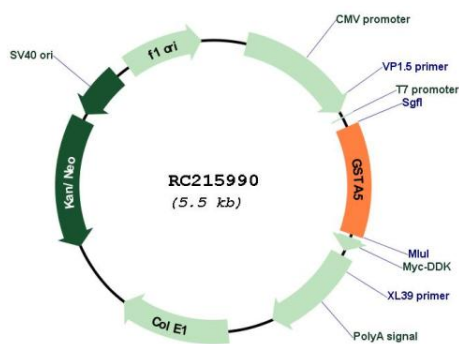
RefSeq: [NM\\_153699.1](#), [NP\\_714543.1](#)

RefSeq Size: 845 bp

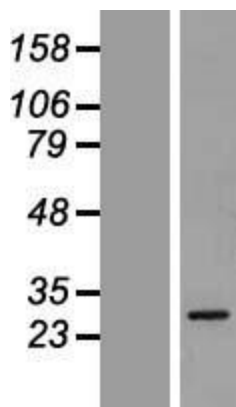
RefSeq ORF: 669 bp

Locus ID: 221357

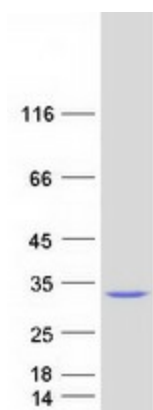
**UniProt ID:** [Q7RTV2](#)  
**Cytogenetics:** 6p12.2  
**Protein Pathways:** Drug metabolism - cytochrome P450, Glutathione metabolism, Metabolism of xenobiotics by cytochrome P450  
**MW:** 25.5 kDa  
**Gene Summary:** The glutathione S-transferases (GST; EC 2.5.1.18) catalyze the conjugation of reduced glutathiones and a variety of electrophiles, including many known carcinogens and mutagens. The cytosolic GSTs belong to a large superfamily, with members located on different chromosomes. For additional information on GSTs, see GSTA1 (MIM 138359).[supplied by OMIM, Sep 2008]

**Product images:**


Circular map for RC215990



Western blot validation of overexpression lysate (Cat# [LY406983]) using anti-DDK antibody (Cat# [TA50011-100]). Left: Cell lysates from untransfected HEK293T cells; Right: Cell lysates from HEK293T cells transfected with RC215990 using transfection reagent MegaTran 2.0 (Cat# [TT210002]).



Coomassie blue staining of purified GSTA5 protein (Cat# [TP315990]). The protein was produced from HEK293T cells transfected with GSTA5 cDNA clone (Cat# RC215990) using MegaTran 2.0 (Cat# [TT210002]).