

Product datasheet for **RC215979**

KAT5 (NM_182710) Human Tagged ORF Clone

Product data:

Product Type:	Expression Plasmids
Product Name:	KAT5 (NM_182710) Human Tagged ORF Clone
Tag:	Myc-DDK
Symbol:	KAT5
Synonyms:	cPLA2; ESA1; HTATIP; HTATIP1; NEDFASB; PLIP; TIP; TIP60; ZC2HC5
Mammalian Cell Selection:	Neomycin
Vector:	pCMV6-Entry (PS100001)
E. coli Selection:	Kanamycin (25 ug/mL)



[View online »](#)

ORF Nucleotide Sequence:

>RC215979 representing NM_182710
 Red=Cloning site Blue=ORF Green=Tags(s)

TTTTGTAATACGACTCACTATAGGGCGGCCGGAATTCGTCGACTGGATCCGGTACCGAGGAGATCTGCC
 GCC**CGCATCGCC**

ATGGCGGAGGTGGTGGTCCGGTCCCCGGGGCGGGCGGAGGAGCCAGGGGAGGTGGTAGAGCCCGAG
 GCCCCCCAGTAGCCGACCTGGCGTCGCGCTGTCTCCCCAGGGGAGATAATCGAGGGCTGCCGCTACC
 CGTGCTGCGGCGGAACACAGGACAACGAAGATGAGTGGCCCTGGCCGAGATCCTGAGCGTGAAGGACATC
 AGTGGCCGGAAGCTTTTCTACGTCCATTACATTGACTTCAACAAACGTCTGGATGAATGGGTGACGCATG
 AGCGGCTGGACCTAAAGAAGATCCAGTTCGCCAAGAAAGAGGCCAAGACCCCTAAGAACGGACTTCC
 TGGGTCCCGTCTGGCTCTCCAGAGAGAGAGGTGCCGGCTCGGCGCAGGCCAGCGGGAAGACCTTGCCA
 ATCCCGGTCCAGATCACACTCCGCTTCAACCTGCCAAGGAGCGGGAGGCCATCCCGGTGGCGAGCCTG
 ACCAGCCGCTCTCTCCAGCTCTGCTGCAGCCCAACCACCGCTCAACGAAACGGAAGGTGGAGGTGGT
 TTCACCAGCAACTCCAGTCCCAGCGAGACAGCCCGGCTCGGTTTTTCCCAGAAATGGAGCCGCCGT
 AGGGCAGTGGCAGCCAGCCAGGACGGAAGCGAAAATCGAATTGTTTGGGCACTGATGAGGACTCCCAGG
 ACAGCTCTGATGGAATACCGTCAGCACCACGCATGACTGGCAGCCTGGTGTCTGATCGAAGCCACGACGA
 CATCGTACCCGGATGAAGAACATTGAGTGCATTGAGCTGGGCCGACCCGCTCAAGCCGTGGTACTTC
 TCCCGTACCCACAGGAACCTACCACATTGCTGTCTCTACCTGTGCGAGTTCTGCCTCAAGTACGGCC
 GTAGTCTCAAGTGTCTTACGCGTCATTTGACCAAGTGTGACCTACGACATCTCCAGGCAATGAGATTTA
 CCGCAAGGGCACCATCTCCTTCTTTGAGATTGATGGACGTAAGAACAAGATTATCCCAGAACCTGTGT
 CTTTTGGCCAAGTGTTCCTTGACCATAAGACACTGTACTATGACACAGACCTTTCTCTTCTACGTC
 TGACAGATGACTGTAAGGGCTTCCACATCGTGGGCTACTTCTCCAAGGAGAAAGAATCAACGGAAGA
 CTACAATGTGGCCTGCATCCTAACCTGCCTCCCTACCAGCGCCGGGGTACGGCAAGCTGCTGATCGAG
 TTCAGCTATGAACTCTCAAAGTGAAGGGAAAACAGGGACCCCTGAGAAGCCCTCTCAGACCTTGGCC
 TCCTATCTATCGAAGCTACTGGTCCCAGACCATCCTGGAGATCCTGATGGGGCTGAAGTCGGAGAGCGG
 GGAGAGGCCACAGATCACCATCAATGAGATTAGTAAAATCACCAGCATCAAGAAGGAGGATGTCATCTCC
 ACTCTGCAGTACCTCAATCTCATCAACTACTCAAAGGGCCAGTACATCCTCACACTGTGAGAGGACATCG
 TGGATGGCCATGAGCGGGCCATGCTCAAGCGGCTCCTGCGGATCGACTCCAAGTGTCTGCACTTCACTCC
 CAAGGACTGGAGCAAGAGGGGGAAGTGG

ACGCGTACGCGGCCGCTCGAGCAGAAACTCATCTCAGAAGAGGATCTGGCAGCAAATGATATCCTGGATT
 ACAAGGATGACGACGATAAGGTTTAA

Protein Sequence:

>RC215979 representing NM_182710
 Red=Cloning site Green=Tags(s)

MAEVVSPVPGAGRREPGEVGRARGPPVADPGVALSPQGEIIEGCRPLVLRNQNDEWPLAEILSVKDI
 SGRKLFYVHYIDFNKRLDEWVTHEERLDLKKIQFPKKEAKTPTKNGLPGSRPGSPEREVPASAQASGKTL
 IPVQITLRFNLPKEREAIIPGGEPDQPLSSSSCLQPNHRSTKRKVEVVPATPVPSETAPASVFPQNGAAR
 RAVAAQPGRKRKSNLGTDEDSQDSSDGIPSAAPRMTGSLVSDRSHDDIVTRMKNIEICIELGRHRLKPWF
 SPYPQELTTLPLVLYLCEFLKYGRSLKCLQRHLTKCDLRHPPGNEIYRGTISFFEIDGRKNKSYSQNL
 LLAKCFLDHKTLYYDTPFLFYVMTEYDCKGFHIVGYFSKEKESTEDYNVACILTLPPYQRRGYGKLLIE
 FSYELSKVEGKTGPEKPLSDLGLLSYRSYWSQTILEILMGLKSESGERPQITINEISEITSIKKEDVIS
 TLQYLNLIINYKQYIILTLEDIVDGHERRMLKRLLRIDSKLHFTPKDWWSKRGKW

TRTRPLEQKLISEEDLAANDILDYKDDDDKV

Chromatograms:

https://cdn.origene.com/chromatograms/mk6094_a03.zip

Restriction Sites:

Sgfl-Mlul

Cloning Scheme:


ACCN: NM_182710

ORF Size: 1638 bp

OTI Disclaimer: The molecular sequence of this clone aligns with the gene accession number as a point of reference only. However, individual transcript sequences of the same gene can differ through naturally occurring variations (e.g. polymorphisms), each with its own valid existence. This clone is substantially in agreement with the reference, but a complete review of all prevailing variants is recommended prior to use. [More info](#)

OTI Annotation: This clone was engineered to express the complete ORF with an expression tag. Expression varies depending on the nature of the gene.

Components: The ORF clone is ion-exchange column purified and shipped in a 2D barcoded Matrix tube containing 10ug of transfection-ready, dried plasmid DNA (reconstitute with 100 ul of water).

- Reconstitution Method:**
1. Centrifuge at 5,000xg for 5min.
 2. Carefully open the tube and add 100ul of sterile water to dissolve the DNA.
 3. Close the tube and incubate for 10 minutes at room temperature.
 4. Briefly vortex the tube and then do a quick spin (less than 5000xg) to concentrate the liquid at the bottom.
 5. Store the suspended plasmid at -20°C. The DNA is stable for at least one year from date of shipping when stored at -20°C.

Note: Plasmids are not sterile. For experiments where strict sterility is required, filtration with 0.22um filter is required.

RefSeq: [NM_182710.3](#)

RefSeq Size: 2335 bp

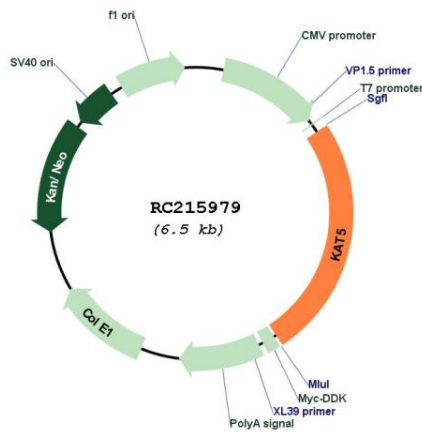
RefSeq ORF: 1641 bp

Locus ID: 10524

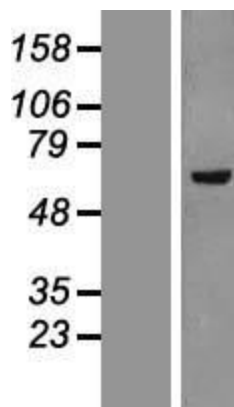
UniProt ID: [Q92993](#)
Cytogenetics: 11q13.1
Protein Families: Druggable Genome, Transcription Factors
MW: 61.6 kDa

Gene Summary: The protein encoded by this gene belongs to the MYST family of histone acetyl transferases (HATs) and was originally isolated as an HIV-1 TAT-interactive protein. HATs play important roles in regulating chromatin remodeling, transcription and other nuclear processes by acetylating histone and nonhistone proteins. This protein is a histone acetylase that has a role in DNA repair and apoptosis and is thought to play an important role in signal transduction. Alternative splicing of this gene results in multiple transcript variants. [provided by RefSeq, Jul 2008]

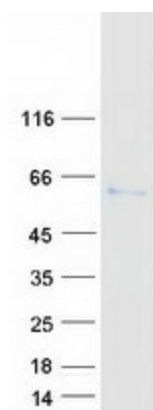
Product images:



Circular map for RC215979



Western blot validation of overexpression lysate (Cat# [LY405423]) using anti-DDK antibody (Cat# [TA50011-100]). Left: Cell lysates from untransfected HEK293T cells; Right: Cell lysates from HEK293T cells transfected with RC215979 using transfection reagent MegaTran 2.0 (Cat# [TT210002]).



Coomassie blue staining of purified KAT5 protein (Cat# [TP315979]). The protein was produced from HEK293T cells transfected with KAT5 cDNA clone (Cat# RC215979) using MegaTran 2.0 (Cat# [TT210002]).