

Product datasheet for **RC215972**

RBM47 (NM_019027) Human Tagged ORF Clone

Product data:

| | |
|---------------------------|--|
| Product Type: | Expression Plasmids |
| Product Name: | RBM47 (NM_019027) Human Tagged ORF Clone |
| Tag: | Myc-DDK |
| Symbol: | RBM47 |
| Synonyms: | NET18 |
| Mammalian Cell Selection: | Neomycin |
| Vector: | pCMV6-Entry (PS100001) |
| E. coli Selection: | Kanamycin (25 ug/mL) |



[View online »](#)

ORF Nucleotide
Sequence:

>RC215972 representing NM_019027
Red=Cloning site Blue=ORF Green=Tags(s)

TTTTGTAATACGACTCACTATAGGGCGGCCGGAATTCGTCGACTGGATCCGGTACCGAGGAGATCTGCC
GCC**CGGATCGCC**

ATGACCGCAGAGGATTCCACCGCAGCCATGAGCAGTACTCGGCCCGGGTCTCGGCCAAGGTGCCCC
AGGGCGTGGCGGGCGCGCCAACGAGGCAGCACTGCTGGCGCTGATGGAGCGCACGGGCTACAGCATGGT
GCAAGAGAACGGGCGAGCGCAAGTACGGCGGCCACCGCCCGGCTGGGAGGGCCCGCACCCGACGCGTGGC
TGCGAGGTCTTCGTGGGCAAGATCCCGCGCAGCTGTACGAGGACGAGCTGGTGCCTGTTCGAGGCGG
TGGGCCGATCTACGAGCTGCGCCTCATGATGGACTTTGACGGCAAGAACCAGCGGCTACGCCCTTCGTCAT
GTACTGCCACAAGCAGAGGCCAAGCGCGCAGTGCCTGAGCTCAACAACACGAGATCCGCCCGGGCCGC
CTGCTCGCGTGTGCTGCAGCGTGGACAACGCGCCTTTCATCGCGGGATCCCAAGATGAAGAAGC
GCGAGGAAATCCTGGAGGAGATTGCCAAGGTACCGAGGGCGTGTGGACGTGATCGTCTACGCCAGCGC
GGCCGACAAGATGAAGAACCAGCGCTTCGCTTTCGTGGAGTACGAGAGCCACCGCGGGCTGCCATGGCT
CGCCGCAAGCTCATGCCTGGCCGATCCAGCTGTGGGGCCACCAGATCGCCGTGGACTGGGCCGAGCCTG
AGATCGAGCTGGACGAGGACGTGATGGAGACCGTGAAGATCCTCTACGTGCGCAACCTCATGATCGAGAC
CACCGAGGACACCATCAAGAAGAGCTTCGGCCAGTTCAACCCCGGCTGCGTGGAGCGCGTCAAGAAGATC
CGCGACTACGCCCTTCGTGCACTTACCAGCCGCGAGGATGCCGTGCATGCCATGAACAACCTCAACGGCA
CTGAGCTGGAGGGCTCGTGCCTGGAGGTACGCTGGCCAAGCCCGTGGACAAGGAGCAGTACTCGCGCTA
CCAGAAGCGAGCCAGGGCGGGCGCGGCTGAGGCAGCGCAGCAGCCAGCTACGTGTACTCCTGCGAC
CCCTACACTGGCCTACTACGGCTACCCTACAACGCGCTCATTGGGCCAACAGGGACTACTTTGTGA
AAGTAGCCATCCCTGACTTGGGGCTCAGTATTCATGTTCCAGCAGCTCCAGCCCTAAAATGATTGA
AGATGGCAAATCCACACAGTGGAGCACATGATCAGCCCAATTGCTGTGCAGCCAGACCCAGCCAGTGTCT
GCTGCCGCGCAGCCGCGCCGCGAGCCGCGCAGCCGCTGTCATTCCACTGTGTGACGCCACCCACTT
TCCAGGGCCGCCAATAACTCCAGTATACCGGTGGCTCCAAACGTTCCAGAGAATTCCTACTGCCGGAT
CTACGGGGCCAGTTACGTGCCATTTGCTGCTCCAGCTACAGCCACGATCGCCACACTACAGAAGAACGCG
GCAGCCGCGCGCCGCTGTATGGAGGATACGCAGGCTACATACCTCAGGCCTTCCTGCTGCTGCCATTC
AGGTCCCCATCCCGACGCTACCAGACATAC

ACGCGTACGCGGGCGCTCGAGCAGAACTCATCTCAGAAGAGGATCTGGCAGCAAATGATATCCTGGATT
ACAAGGATGACGACGATAAGGTTTAA

Protein Sequence:

>RC215972 representing NM_019027
Red=Cloning site Green=Tags(s)

MTAEDSTAAMSSDSAAGSSAKVPEGVAGAPNEAALLALMERTGYSMVQENGQRKYGGPPPGWEGPHPRG
CEVFGKIPRDVYEDELVPVFEAVGRIYELRLMDFDGNRGYAFVYCHKHEAKRAVRELNNYEIRPGR
LLGVCCSVDNCRFIGGIPKMKKREEILEEIAKVTEGLDVIYVYASAADKMKNRGFVVEYESHRAAMA
RRKLMGRIQLWGHQIAVDWAEPEIDVDEDMETVKILYVRNMIETTEDTIKKSFGQFNPQCVERVKKI
RDYAFVHFTSREDAVHAMNNGTELEGSLEVTLAKPVDKEQYSRYQKAARGGGAAEAQQPSVYVYSCD
PYTLAYYGYPYNALIGPNRDYFVKVAIPAIGAQYSMFPAAPAPKMIEDGKIHTVEHMI SPIAVQDPASA
AAAAAAAAAAAAAVIPTVSTPPPFQGRIPVYTVAPNVQRIPTAGIYGASYVPFAAPATATIATLQKNA
AAAAAVYGGYAGYIPQAFPAAIQVPIPDVYQTY

TRTRPLEQKLISEEDLAANDILDYKDDDDKV

Chromatograms:

https://cdn.origene.com/chromatograms/mk6611_g04.zip

Restriction Sites:

Sgfl-MluI

Cloning Scheme:


ACCN: NM_019027

ORF Size: 1572 bp

OTI Disclaimer: The molecular sequence of this clone aligns with the gene accession number as a point of reference only. However, individual transcript sequences of the same gene can differ through naturally occurring variations (e.g. polymorphisms), each with its own valid existence. This clone is substantially in agreement with the reference, but a complete review of all prevailing variants is recommended prior to use. [More info](#)

OTI Annotation: This clone was engineered to express the complete ORF with an expression tag. Expression varies depending on the nature of the gene.

Components: The ORF clone is ion-exchange column purified and shipped in a 2D barcoded Matrix tube containing 10ug of transfection-ready, dried plasmid DNA (reconstitute with 100 ul of water).

Reconstitution Method:

1. Centrifuge at 5,000xg for 5min.
2. Carefully open the tube and add 100ul of sterile water to dissolve the DNA.
3. Close the tube and incubate for 10 minutes at room temperature.
4. Briefly vortex the tube and then do a quick spin (less than 5000xg) to concentrate the liquid at the bottom.
5. Store the suspended plasmid at -20°C. The DNA is stable for at least one year from date of shipping when stored at -20°C.

Note: Plasmids are not sterile. For experiments where strict sterility is required, filtration with 0.22um filter is required.

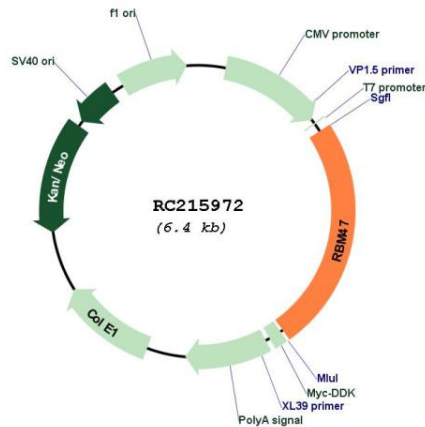
RefSeq: [NM_019027.4](#)

RefSeq Size: 4020 bp

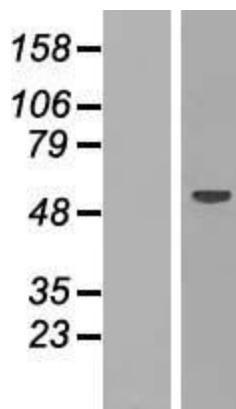
RefSeq ORF: 1575 bp

Locus ID: 54502

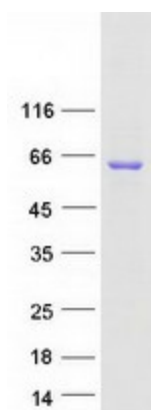
UniProt ID: A0AV96
Cytogenetics: 4p14
Domains: RRM
MW: 56.7 kDa

Product images:


Circular map for RC215972



Western blot validation of overexpression lysate (Cat# [LY412797]) using anti-DDK antibody (Cat# [TA50011-100]). Left: Cell lysates from untransfected HEK293T cells; Right: Cell lysates from HEK293T cells transfected with RC215972 using transfection reagent MegaTran 2.0 (Cat# [TT210002]).



Coomassie blue staining of purified RBM47 protein (Cat# [TP315972]). The protein was produced from HEK293T cells transfected with RBM47 cDNA clone (Cat# RC215972) using MegaTran 2.0 (Cat# [TT210002]).