

Product datasheet for RC215969

PRKCBP1 (ZMYND8) (NM_183048) Human Tagged ORF Clone

Product data:

Product Type:	Expression Plasmids
Product Name:	PRKCBP1 (ZMYND8) (NM_183048) Human Tagged ORF Clone
Tag:	Myc-DDK
Symbol:	ZMYND8
Synonyms:	PRKCBP1; PRO2893; RACK7
Vector:	pCMV6-Entry (PS100001)
E. coli Selection:	Kanamycin (25 ug/mL)
Cell Selection:	Neomycin
ORF Nucleotide Sequence:	>RC215969 representing NM_183048 Red=Cloning site Blue=ORF Green=Tags(s)

TTTTGTAATACGACTCACTATAGGGCGCCGGAATTCGTCGACTGGATCCGGTACCGAGGAGATCTGCC
GCC**CGATCGCC**

ATGCATCCACAGAGCTTGGCTGAAGAGGAAATAAAAACAGAACAGGAGGTGGTAGAGGGCATGGATATCT
CTACTCGCTCAAAGATCCTGGCTCTGCAGAGAGAACAGCCAGAAAAGAAAGTTCCCCAGCCCTCCACA
TTCTTCCAATGGCCACTCGCCGAGGACACATCAACAAGCCCATTA AAAAGAAAAGAAACCTGGCTTA
CTGAACAGTAACAATAAGGAGCAGGATGGACGGAATGATTTCTACTGCTGGGTTTGTACCAGGAAAGGCC
AAGTCCTTTGCTGTGAGCTCTGTCCCGGGTTTATCACGTAAGTGTCTGAGACTGACATCGGAACCAGA
GGGGGACTGGTTTTGTCCTGAATGTGAGAAAATTACAGTAGCAGAATGCATCGAGACCCAGAGTAAAGCC
ATGACAAATGCTCACCATTGAACAGTTATCCTACCTGCTCAAGTTTGCCATTGAGAAAATGAAACAGCCAG
GGACAGATGCATTCCAGAAGCCGTTCCATTGGAACAGCACCCCTGACTATGCGGAATACATCTTCCATCC
AATGGACCTTTGTACATTGAAAAAGAAATGCGAAAAAGAAATGTATGGCTGCACAGAAGCCTTCTGGCT
GATGCAAAGTGGATTTTGCAACTGCATCATTATAATGGGGGAAATCACAAATGACGCAAAATAGCGA
AAGTAGTCATCAAATCTGTGAACATGAGATGAATGAAATCGAAGTATGCCAGAATGTTATCTAGCTGC
TTGCCAAAACGAGATAACTGGTTTTGTGAGCCTTGAGCAATCCACATCCTTTGGTCTGGGCCAAACTG
AAGGGTTTTCCATTCTGGCCTGCAAAAGCTCTAAGGGATAAAGACGGGCAGGTCGATGCCGATTCTTTG
GACAACATGACAGGGCCTGGTTCCAATAAATAATTGCTACCTCATGTCTAAAGAAATTCCTTTTTCTGT
GAAAAAGACTAAGAGCATCTTCAACAGTGCCATGCAAGAGATGGAGGTTTACGTGGAGAATCCGAGG
AAGTTTGGGGTTTTTAATTACTCTCATTAGGACACCCTACACACCAACAGCCAGTATCAAATGCTGC
TCGATCCCACCAACCCAGCGCCGCACTGCCAAGATAGACAAGCAGGAGAAGGTCAAGCTCAACTTTGA
CATGACGGCATCCCCAAGATCCTGATGAGCAAGCCTGTGCTGAGTGGGGCACAGGCCCGGATTTCC
TTGTCCGATATGCCGCGCTCCCCATGAGCACAACTCTTCTGTGCACACGGGCTCCGACGTGGAGCAGG
ATGCTGAGAAGAAGGCCAGTCGAGCCACTTCAGTGCAGCGAGGAGTCCATGGACTTCCGGATTAAGAG
CACAGTTCAACAGCCTCCACCAAGACGGGACAAGCAGGGAGTTATCCGGCAGCCAAAGCCCTTCTCT
CCTCAACTGTCAGCTCCTATCACGACGAAAACGGACAAAACCTCCACCACCGGCAGCATCTGAATCTTA



[View online >](#)

ACCTGGATCGAAGCAAAGCTGAGATGGATTTGAAGGAGCTGAGCGAGTCGGTCCAGCAACAGTCCACCCC
 TGTTCTCTCATCTCTCCAAGCGCCAGATTCTGTAGCAGGTTCCAGCTGAATCTTGACAAGACCATAGAG
 AGTTGCAAAGCACAATTAGGCATAAATGAAATCTCGGAAGATGTCTATACGGCCGTAGAGCACAGCGATT
 CGGAGGATTCTGAGAAGTCAGATAGTAGCGATAGTGAGTATATCAGTGATGATGAGCAGAAGTCTAAGAA
 CGAGCCAGAAGACACAGAGGACAAAGAAGTTGTGAGTGGACAAAGAGCCATCTGCTGTTAAAAAAG
 CCCAAGCCTACAAACCCAGTGGAGATTAAGAGGAGCTGAAAAGCAGCTCACCAGCCAGCGAGAAGCGAG
 ACCCTGGAGCAGTCAAGGACAAGGCCAGCCCTGAGCCTGAGAAGGACTTTCCGAAAAGGCCAAAACCTTC
 ACCTCACCCCATAAAGGATAAACTGAAGGGAAAAGATGAGACGGATTCCCAACAGTCCATTTGGGCTG
 GACTCTGATTCAGAGAGCGAACTTGTATAGATTTAGGAGAAGACCATTCTGGGCGGAGGGTTCGAAAA
 ATAAGAAGGAACCCAAAGAACCATCTCCAAACAGGATGTTGTAGGTAAGTCCACCATCCACGACGGT
 GGGCAGCCATTCTCCCCGGAACACCGGTGCTCACCCGCTCTCCGCCAAAACCTCCGCGGCTGGCGCC
 ACAGCCACCACCAGCACGTCTCCACGGTCACCGTCACGGCCCCGGCCCCGCCGCCACAGGAAGCCAG
 TGAAAAAGCAGAGGCCGCTTTTACGAAGGAGACTGCCCGGCGTGCAGCGGGTGTGTGGAACATC
 AACTGTCCAGCAGAAGGAGATCACACAGAGCCATCCACGTCCACCATCACCTGGTGACCAGCACAG
 TCATCGCCCTGGTACCAGCTCGGGTCCATGAGCACCTTGTGTCTCAGTCAACGCTGACCTGCCCA
 TCGCCACTGCCTCAGCTGATGTCGCCGCTGATATTGCCAAGTACACTAGCAAAATGATGGATGCAATAAA
 AGGAACAATGACAGAAATATACAACGATCTTTCTAAAACACTACTGGAAGCACAATAGCTGAGATTCGC
 AGGCTGAGGATCGAGATAGAGAAGTCCAGTGGCTGCACCAGCAAGAGCTCTCCGAAATGAAACACAAC
 TAGAGCTGACCATGGCGGAGATGCGGCAGAGCCTGGAGCAGGAGCGGGACCGGCTCATCGCCGAGGTGAA
 GAAGCAGCTGGAGTTGGAGAAGCAGCAGCGGTGGATGAGACCAAGAAGAAGCAGTGGTGCGCCAACTGC
 AAGAAGGAGGCCATCTTTACTGCTGTTGGAACACTAGCTACTGTGACTACCCCTGCCAGCAAGCCCACT
 GGCCTGAGCACATGAAGTCTCCACCCAGTCAGCTACTGCTCCTCAGCAGGAAGCGGATGCTGAGGTGAA
 CACAGAAACACTAAATAAGTCTCCAGGGGAGCTCCTCGAGCACACAATCAGCACCTTCCAGAACGGCC
 AGCGCCTCCAAAGAGAAGGAGAGCTCAGCTGAGAAAAGCAAGGAGAGTGGCTCGACCTTGACCTTTCTG
 GCTCCAGAGAGAGCCCTCCTCATTCTTTAGGCTCCAACCAAGGCTCTGACCATTCCCGGAGTAATAA
 ATCCAGTTGGAGCAGCAGTATGAGAAGAGGGATCGACACGTTCCGATCACAACACCAGTACCAGCAGC
 AAGAGCTCCTCCGAAAGAGTCTCGGTGGACACCTTCTGGGAC

ACGCGTACGCGGCCGCTCGAGCAGAAACTCATCTCAGAAGAGGATCTGGCAGCAATGATATCCTGGATT
 ACAAGGATGACGACGATAAGGTTTAA

Protein Sequence:

>RC215969 representing NM_183048
 Red=Cloning site Green=Tags(s)

MHPQSLAEEEEIKTEQEVVEGMDISTRKDPGSAERTAQRKRFSPPHSSNGHSPQDTSTSPIKKKKPKGL
 LNSNNKEQDGRNDFYCWVCHREGQVLCCELCPRVYHAKCLRLTSEPEGDFWFCPECEKITVAECIETQSKA
 MTMLTIEQLSYLLKFAIQKMKQPGTDAFQKPVPLEQHPDYAEYIFHPMDLCTLEKNAKKKMYGCTEAFLA
 DAKWILHNCIIYNGGNHKL TQIAKVVIKICEHEMNEIEVCECYLAACQKRDNWFCEPCSNPHPLVWAKL
 KGFPFWPAKALRDKDQVDARFFGQHDRAWVPIINCYLMSKEIPFSVKTKSIFNSAMQEMEYVENIRR
 KFGVFNYSPFRTPYTPNSQYQMLLDPTNPSAGTAKIDKQEKVKLNFDMTASPKILMSKPVLSGGTGRRIS
 LSDMPRSPMSTNSSVHTGSDVEQDAEKKATSSHFSASEESMDFLDKSTASPASTKTGQAGSLSGSPKPF
 PQLSAPITTKTDKSTTTGSILNLDNRKAEMDLKELSESVQQSTPVPLISPKRQIRSRFQLNLDKTIE
 SCKAQLGINEISEDVYTAVEHSDSESEKSDSDSEYISDDEQKSKNEPEDTEDKEGCMDEKPSAVKKK
 PKPTNPVEIKEELKSTSPASEKADPGAVKDKASPEPEKDFSEKAKPSPHPIKDKLKGKDETDSPVHLGL
 DSDSESELVIDLGEDHSGREGRNKKEPKESPKQDVVGKTPPSTTVGSHSPPETPVLTRSSAQTSAGA
 TATTSTSTVTVTAPAPAATGSPVKKQRPLLPKETAPAVQRVVWNSSTVQKEITQSPSTSTITLVTSTQ
 SSPLVTSFGSMSTLVSSYNADLP IATASADVAADIAKYTSKMMDAIKGTMTIEIYNDLSKNTTGTAEIR
 RLRIEIEKLQWLHQELSEMKNLEL TMAEMRQSLERDRLIAEVKKQLELEKQAVDETQKQWCANC
 KKEAIFYCCWNTSYCDYPCQQAHWPEHMKSTQSATAPQQEADAENVNTE TLNKSSQSSSTQSAPSETA
 SASKEKETSAEKSKEGSLDLSGSRETPSSILLGSNQSGDHSRSNKSSWSSSDEKRGSTRSDHNTSTST
 KSLLPKESRLDTFWD

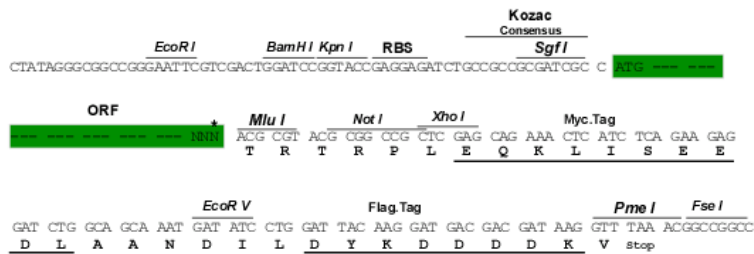
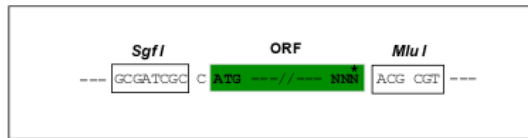
TRTRPLEQKLISEEDLAANDILDYKDDDDKV

Restriction Sites:

SgfI-MluI

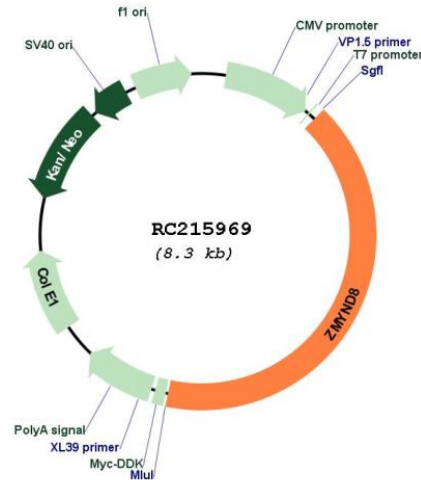
Cloning Scheme:

Cloning sites used for ORF Shuttling:



* The last codon before the Stop codon of the ORF

Plasmid Map:



ACCN: NM_183048

ORF Size: 3405 bp

OTI Disclaimer: The molecular sequence of this clone aligns with the gene accession number as a point of reference only. However, individual transcript sequences of the same gene can differ through naturally occurring variations (e.g. polymorphisms), each with its own valid existence. This clone is substantially in agreement with the reference, but a complete review of all prevailing variants is recommended prior to use. [More info](#)

OTI Annotation: This clone was engineered to express the complete ORF with an expression tag. Expression varies depending on the nature of the gene.

Components: The ORF clone is ion-exchange column purified and shipped in a 2D barcoded Matrix tube containing 10ug of transfection-ready, dried plasmid DNA (reconstitute with 100 ul of water).

Reconstitution Method:

1. Centrifuge at 5,000xg for 5min.
2. Carefully open the tube and add 100ul of sterile water to dissolve the DNA.
3. Close the tube and incubate for 10 minutes at room temperature.
4. Briefly vortex the tube and then do a quick spin (less than 5000xg) to concentrate the liquid at the bottom.
5. Store the suspended plasmid at -20°C. The DNA is stable for at least one year from date of shipping when stored at -20°C.

RefSeq: [NM_183048.2](#)

RefSeq Size: 4493 bp

RefSeq ORF: 3408 bp

Locus ID: 23613

UniProt ID: [Q9ULU4](#)

Cytogenetics: 20q13.12

Protein Families: Druggable Genome, Transcription Factors

MW: 125.3 kDa

Gene Summary: The protein encoded by this gene is a receptor for activated C-kinase (RACK) protein. The encoded protein has been shown to bind in vitro to activated protein kinase C beta I. In addition, this protein is a cutaneous T-cell lymphoma-associated antigen. Finally, the protein contains a bromodomain and two zinc fingers, and is thought to be a transcriptional regulator. Multiple transcript variants encoding several different isoforms have been found for this gene. [provided by RefSeq, Jul 2008]