

Product datasheet for RC215962

POU4F2 (NM_004575) Human Tagged ORF Clone

Product data:

Product Type: Expression Plasmids
Product Name: POU4F2 (NM_004575) Human Tagged ORF Clone
Tag: Myc-DDK
Symbol: POU4F2
Synonyms: Brn-3b; BRN3.2; BRN3B
Mammalian Cell Selection: Neomycin
Vector: pCMV6-Entry (PS100001)
E. coli Selection: Kanamycin (25 ug/mL)
ORF Nucleotide Sequence: >RC215962 representing NM_004575
Red=Cloning site Blue=ORF Green=Tags(s)

TTTTGTAATACGACTCACTATAGGGCGCCGGGAATTCGTCGACTGGATCCGGTACCGAGGAGATCTGCC
GCC**CGATCGCC**

ATGATGATGATGTCCTGAACAGCAAGCAGGCGTTTAGCATGCCGCACGGCGGCAGCCTGCACGTGGAGC
CCAAGTACTCGGCACTGCACAGCACCTCGCCGGGCTCCTCGGCTCCCATCGCGCCCTCGGCCAGCTCCCC
CAGCAGCTCGAGCAACGCTGGTGGTGGCGGCGGCGGCGGCGGCGGCGGCGGCGGCGGCGGCGGAGGCCGA
AGCAGCAGCTCCAGCAGCAGTGGCAGCAGCGGCGGCGGCGGCGGCGGCGGCGGCGGCGGCGGCGGCGGCGG
CAACCCACCGAGCAATATATTCGGCGGGCTGGATGAGAGTCTGCTGGCCGCGCCGAGGCTCTGGCAGC
CGTGGACATCGTCTCCAGAGCAAGAGCCACCACCACCATCCACCCACCACAGCCCTTCAAACCGGAC
GCCACCTACCACACTATGAATACCATCCCGTGCAGCTCGGCCGCCTTCTTTCATCGGTGCCATCTCGC
ACCCTTGCAGCTGGCGGGCAGCACCACCACCACCACCATCACCACCACCACCACCACCAACCGCACCA
GGCGCTGGAGGGCGAGCTGCTGGAGCACCTGAGTCCCGGGCTGGCCCTGGGCGCTATGGCGGGCCCCGAC
GGCGCTGTGGTGTCCACGCCGGCTCACGCGCCGCATGGCCACCATGAACCCATGCACCAAGCAGCGC
TCAGCATGGCCCACGCGCACGGGCTGCCGTCGCACATGGGCTGCATGAGCGACGTGGACGCCGACCCCGG
GGACCTGGAGGCATTGCGCGAGCGCTTCAAGCAGCGACGCATCAAGCTGGGGTGACCCAGGCAGATGTG
GGCTCCGCGCTGGCCAACCTCAAGATCCCGGGCTGGGCTCGTTAGCCAGAGCACCATCTGCAGTTTCG
AGTCCCTCACACTGTCCACAATAATATGATCGCGCTCAAACCCATCCTGCAGGCATGGCTCGAGGAGGC
CGAGAAGTCCACCGCGAGAAGCTCACCAAGCCTGAACTTCAATGGCGCGGAGAAGAAGCGCAAGCGC
ACGTCCATCGTGCAGAGAGCGCTCGCTCGAAGCCTACTTTGCCATTACGCCTCGGCCCTCTCTG
AAAAGATCGCCGCCATCGCGGAGAAGCTGGACCTGAAGAAAAACGTGGTGCAGCTCTGGTTCTGCAACCA
GAGGCAGAAACAGAAAAGAAATGAAATATTCGCGCCGCATT

ACGCGTACGCGGCGGCTCGAGCAGAACTCATCTCAGAAGAGGATCTGGCAGCAAATGATATCCTGGATT
ACAAGGATGACGACGATAAGGTTTAA



Protein Sequence: >RC215962 representing NM_004575
Red=Cloning site Green=Tags(s)

MMMMSLNSKQAF SMPHGGSLHVEPKYSALHSTSPGSSAPIAPSASSPSSSSNAGGGGGGGGGGGGGGGGR
 SSSSSSSGSSGGGSEAMRRACLPTPPSNI FGG LDESL LARAEALAAVDIVSQSKSHHHHPHHSPFKPD
 ATYHTMNTIPCTSAASSSSVPI SHPCALAGTHHHHHHHHHHHHQP HQALEGELLEHLSPGLALGAMAGPD
 GAVVSTPAHAPHMATMNP HQAAL SMAHAHGLPSHMGCMSD V DADPRDLEAFAERFKQRRIKL GVTQADV
 GSALANLKIPGVGSL SQSTICRFESLTL SHNMIAL KPILQAWLEEA EKSHREKLTKPELFNGAEKKRKR
 TSIAAPEKRSLEAYFAIQPRPSSEKIAAIAEKLDL KKNVVRVWF CNQRQKQKRMKYSAGI

TRTRPLEQKLISEEDLAANDILDYKDDDDKV

Chromatograms: https://cdn.origene.com/chromatograms/mk8028_d09.zip

Restriction Sites: SgfI-MluI

Cloning Scheme:



* The last codon before the Stop codon of the ORF

ACCN: NM_004575

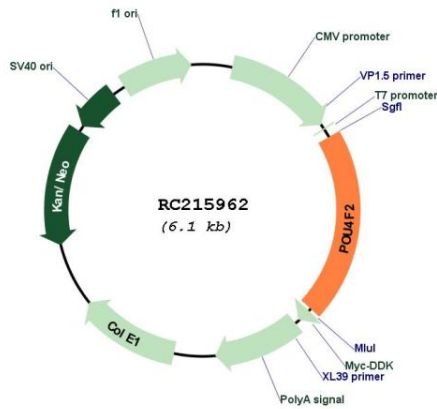
ORF Size: 1230 bp

OTI Disclaimer: Due to the inherent nature of this plasmid, standard methods to replicate additional amounts of DNA in E. coli are highly likely to result in mutations and/or rearrangements. Therefore, OriGene does not guarantee the capability to replicate this plasmid DNA. Additional amounts of DNA can be purchased from OriGene with batch-specific, full-sequence verification at a reduced cost. Please contact our customer care team at custsupport@origene.com or by calling 301.340.3188 option 3 for pricing and delivery.

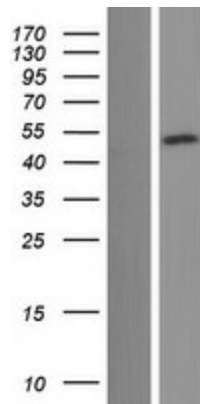
The molecular sequence of this clone aligns with the gene accession number as a point of reference only. However, individual transcript sequences of the same gene can differ through naturally occurring variations (e.g. polymorphisms), each with its own valid existence. This clone is substantially in agreement with the reference, but a complete review of all prevailing variants is recommended prior to use. [More info](#)

OTI Annotation:	This clone was engineered to express the complete ORF with an expression tag. Expression varies depending on the nature of the gene.
Components:	The ORF clone is ion-exchange column purified and shipped in a 2D barcoded Matrix tube containing 10ug of transfection-ready, dried plasmid DNA (reconstitute with 100 ul of water).
Reconstitution Method:	<ol style="list-style-type: none">1. Centrifuge at 5,000xg for 5min.2. Carefully open the tube and add 100ul of sterile water to dissolve the DNA.3. Close the tube and incubate for 10 minutes at room temperature.4. Briefly vortex the tube and then do a quick spin (less than 5000xg) to concentrate the liquid at the bottom.5. Store the suspended plasmid at -20°C. The DNA is stable for at least one year from date of shipping when stored at -20°C.
Note:	Plasmids are not sterile. For experiments where strict sterility is required, filtration with 0.22um filter is required.
RefSeq:	NM_004575.1 , NP_004566.1
RefSeq Size:	3110 bp
RefSeq ORF:	1230 bp
Locus ID:	5458
UniProt ID:	Q12837
Cytogenetics:	4q31.22
Protein Families:	Transcription Factors
MW:	42.9 kDa
Gene Summary:	The protein encoded by this gene is a member of the POU-domain transcription factor family and may be involved in maintaining visual system neurons in the retina. The level of the encoded protein is also elevated in a majority of breast cancers, resulting in accelerated tumor growth. [provided by RefSeq, Sep 2011]

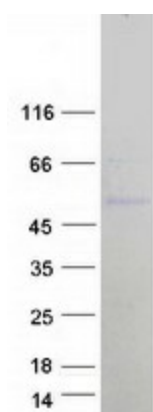
Product images:



Circular map for RC215962



Western blot validation of overexpression lysate (Cat# [LY417894]) using anti-DDK antibody (Cat# [TA50011-100]). Left: Cell lysates from untransfected HEK293T cells; Right: Cell lysates from HEK293T cells transfected with RC215962 using transfection reagent MegaTran 2.0 (Cat# [TT210002]).



Coomassie blue staining of purified POU4F2 protein (Cat# [TP315962]). The protein was produced from HEK293T cells transfected with POU4F2 cDNA clone (Cat# RC215962) using MegaTran 2.0 (Cat# [TT210002]).