

Product datasheet for RC215959

SPACA3 (NM_173847) Human Tagged ORF Clone

Product data:

Product Type:	Expression Plasmids
Product Name:	SPACA3 (NM_173847) Human Tagged ORF Clone
Tag:	Myc-DDK
Symbol:	SPACA3
Synonyms:	ALLP17; CT54; LYC3; LYZC; LYZL3; SLLP1
Mammalian Cell Selection:	Neomycin
Vector:	pCMV6-Entry (PS100001)
E. coli Selection:	Kanamycin (25 ug/mL)
ORF Nucleotide Sequence:	>RC215959 ORF sequence Red=Cloning site Blue=ORF Green=Tags(s)

TTTTGTAATACGACTCACTATAGGGCGGCCGGAATTCGTCGACTGGATCCGGTACCGAGGAGATCTGCC
GCC**CGATCGCC**

ATGGTCTCAGCTCTGCGGGGAGCACCCCTGATCAGGGTGCCTCAAGCCCTGTTTCTTCTCCTTCTGTGA
GTGGACCACGGAGGCTGGTGAGCTGCCTGTCATCCCAAAGCTCAGCTCTGAGCCAGAGTGGTGGTGGCTC
CACCTCTGCCCGCCGCATAGAAGCCAGGAGCAGGGCTCTCAGAAGGCGGTGGTCCAGCTGGGATCATG
TTGTTGGCCCTGGTCTGCTGCTCAGCTGCCTGCTACCCTCCAGTGAGGCCAAGCTCTACGGTCGTTGTG
AACTGGCCAGAGTGCTACATGACTTCGGGCTGGACGGATACCGGGGATATAGCCTGGCTGACTGGGTCTG
CCTTGCTTATTTACAAGCGTTTTCAACGCAGCTGCTTTGGACTACGAGGCTGATGGGAGACCAACAAC
GGGATCTTCCAGATCAACAGCCGGAGGTGGTGCAGCAACCTCACCCGAACGTCCCAACGTGTGCCGGA
TGTAAGTCTCAGATTTGTTGAATCCTAATCTCAAGGATACCGTTATCTGTGCCATGAAGATAACCCAAGA
GCCTCAGGGTCTGGTTACTGGGAGGCCTGGAGGCATCACTGCCAGGAAAAGACCTCACTGAATGGGTG
GATGGCTGTGACTTC

ACGCGTACGCGGGCCGCTCGAGCAGAACTCATCTCAGAAGAGGATCTGGCAGCAAATGATATCCTGGATT
ACAAGGATGACGACGATAAGGTTTAA



[View online »](#)

Protein Sequence: >RC215959 protein sequence
Red=Cloning site Green=Tags(s)

MVSALRGAPLIRVHSSPVSSPSVSGPRRLVSLSSQSSALSQSGGGSTSAAGIEARSRALRRRWCPAGIM
 LLAALVCLLSCLLPSSSEAKLYGRCELARVLHDFGLDGYRGYSLADWVCLAYFTSGFNAAALDYEADGSTNN
 GIFQINSRRWCSNLTPNVPNVCRMYCSDLLNPNLKDTVICAMKITQEPQGLGYWEAWRHHCQKDLTEWV
 DGCDF

TRTRPLEQKLISEEDLAANDILDYKDDDDKV

Chromatograms: https://cdn.origene.com/chromatograms/mk6449_d12.zip

Restriction Sites: SgfI-MluI

Cloning Scheme:

Cloning sites used for ORF Shuttling:



* The last codon before the Stop codon of the ORF

ACCN: NM_173847

ORF Size: 645 bp

OTI Disclaimer: The molecular sequence of this clone aligns with the gene accession number as a point of reference only. However, individual transcript sequences of the same gene can differ through naturally occurring variations (e.g. polymorphisms), each with its own valid existence. This clone is substantially in agreement with the reference, but a complete review of all prevailing variants is recommended prior to use. [More info](#)

OTI Annotation: This clone was engineered to express the complete ORF with an expression tag. Expression varies depending on the nature of the gene.

Components: The ORF clone is ion-exchange column purified and shipped in a 2D barcoded Matrix tube containing 10ug of transfection-ready, dried plasmid DNA (reconstitute with 100 ul of water).

Reconstitution Method:

1. Centrifuge at 5,000xg for 5min.
2. Carefully open the tube and add 100ul of sterile water to dissolve the DNA.
3. Close the tube and incubate for 10 minutes at room temperature.
4. Briefly vortex the tube and then do a quick spin (less than 5000xg) to concentrate the liquid at the bottom.
5. Store the suspended plasmid at -20°C. The DNA is stable for at least one year from date of shipping when stored at -20°C.

Note: Plasmids are not sterile. For experiments where strict sterility is required, filtration with 0.22um filter is required.

RefSeq: [NM_173847.5](#)

RefSeq Size: 819 bp

RefSeq ORF: 648 bp

Locus ID: 124912

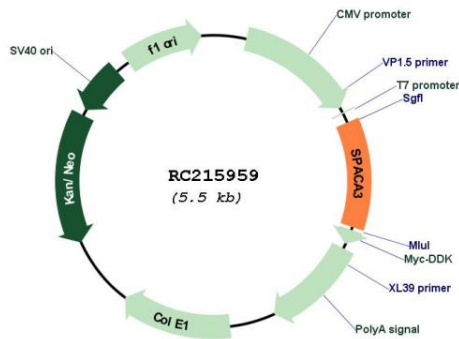
UniProt ID: [Q8IXA5](#)

Cytogenetics: 17q11.2

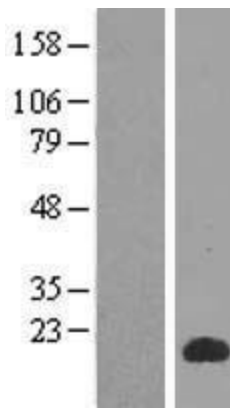
MW: 23.4 kDa

Gene Summary: The protein encoded by this gene is a sperm surface protein that may be involved in adhesion to the egg prior to fertilization. While the encoded protein has significant similarity to lysozyme at the amino acid level, it has no detectable bacteriocidal activity. Several transcript variants encoding different isoforms have been found for this gene. [provided by RefSeq, Nov 2015]

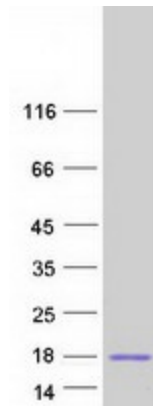
Product images:



Circular map for RC215959



Western blot validation of overexpression lysate (Cat# [LY406283]) using anti-DDK antibody (Cat# [TA50011-100]). Left: Cell lysates from untransfected HEK293T cells; Right: Cell lysates from HEK293T cells transfected with RC215959 using transfection reagent MegaTran 2.0 (Cat# [TT210002]).



Coomassie blue staining of purified SPACA3 protein (Cat# [TP315959]). The protein was produced from HEK293T cells transfected with SPACA3 cDNA clone (Cat# RC215959) using MegaTran 2.0 (Cat# [TT210002]).