

## Product datasheet for RC215958

### SPHKAP (NM\_030623) Human Tagged ORF Clone

#### Product data:

Product Type:	Expression Plasmids
Product Name:	SPHKAP (NM_030623) Human Tagged ORF Clone
Tag:	Myc-DDK
Symbol:	SPHKAP
Synonyms:	SKIP
Mammalian Cell Selection:	Neomycin
Vector:	pCMV6-Entry (PS100001)
E. coli Selection:	Kanamycin (25 ug/mL)
ORF Nucleotide Sequence:	>RC215958 representing NM_030623 Red=Cloning site Blue=ORF Green=Tags(s)

TTTTGTAATACGACTCACTATAGGGCGGCCGGAATTCGTCGACTGGATCCGGTACCGAGGAGATCTGCC  
GCC**CGATCGCC**

ATGGATGGCAACTCCCTGCTCTCGGTACCAAGCAACTTGGAGTCATCACGGATGTATGACGTTTTGGAAC  
CGCAGCAGGGCAGAGGCTGTGGCAGCTCAGGAAGCGGCCCGGGAACCCATCACAGCCTGTAAGAAGGT  
TCTTCGCAGCAATAGCCTGCTGGAGTCAACAGACTACTGGTTGCAGAATCAGAGGATGCCCTGCCAATT  
GGTTTTGTAGAAGACAAGTCTGAAAACGTGCTTCTGTCTGCTTTGTGAATCTTGGTGTGAACAAGGATG  
AATGCAGCACAGAGCACCTGCAACAGAACTGGTCAACGTTTCACCAGATCTTCCAAAACCTATCAGTTC  
CATGAATGTCCAACAACCAAGAAAATGAAATGTTGTCTTAAGTGGGTAGCCTCTGGAAATCTCCAG  
GCAGATTTTGAAGTTTCAGAGTCCCTGGCTGCCAGATATCTGCTTGGTCCAATGTGCAAGAGGGAACA  
GACCAACAGTACCAACTGCATCATCTTTGAAATCAACAAATTTCTGATTGGTCTGGAACGGTGCAGGA  
GCGACAGCTCCACCTGGAACAAACATCTTGAACCTGGAGGATGACACGAACTGTTCTTATCTTCAATC  
GAGGAAGACTTTCTACCGCTTCTGAGCACTTGGAGGAGGAAAGCGAGGTGGATGAATCTAGGAACGATT  
ATGAAAATATAAATGTCTCAGCCAATGTTTTGAAAAGTAAACAGCTAAAGGGAGCCACCCAGGTGGAATG  
GAATTGCAACAAGGAAAAGTGGCTTTATGCTTTGGAAGACAAATACATCAACAAATATCCACACCCATTG  
ATTAACAACAGAACGATCTCCAGAAAACCTAACAAAGAACACAGCCTTGCAGAGTCTAGATCCCTCAGCCA  
AGCCATCACAGTGGAAAAGAGAAGCTGTGGGGAATGGGAGACAAGCCACACATTATTATCATTAGAAAGC  
TTTTAAAGGTCAAATGGAATAACACAGGCACTGTATATTCCAAAAGATGCTTATTTCTCCATGATGGAT  
AAAGATGTACCTTCTGCATGTGCTGTGGCAGAGCAGAGAAGCAACCTAAACCCAGGAGACCATGAAGACA  
CAAGAAACGCTCTCCCTCCTAGACAAGATGGAGAAGTCAACACTGGCAAGTATGCTACAAATTTAGCAGA  
ATCCGTGCTGCAGGATGCATTTATTAGATTATCTCAATCTCAGTCCACATTACCCAGGAATCTGCAGTC  
AGTGTCTGTAGGAAGTCTCTGCTTCCCAGTTGCTATTCCACAAAAGATACAGTGGTTTCTCGGTCAT  
GGAATGAGCTCCCAAAATCGTCGTTGTTCCAGAGTCCAGATGGCAGTGATGCTGCCCCACAGCCAGGCAT  
CTCCTCCTGGCCTGAGATGGAAGTCTCTGTTGAAACCTCAAGCATCCCCTCTGGAGAGAACTCCAGCAGA



CAACCCAGAGTCTAGAAAGTGGCGTTAGCTTGTGCAGCCACTGTGATTGGAACATTTCCAGTCCAC  
 AGGCCACAGAAAGACTCAAAATGGAGCAAGTGGTCTCGAACTTTCCCCAGGGAGCAGTGGTGCAGTGC  
 AACTCAAGCACCCCAAGGACTCAAGGAACCTTCCATCAATGAGTACTCCTTTCCATCTGCTTTGTGTGGC  
 ATGACTCAGGTGGCCAGTGCCGTGGTGTCTGTGGTCTGGGTGAAAGAGAAGAGGTGACATGCTCAGTGG  
 CTCCAAGTGGTAGCCTCCCGCTGCAGCTGAGGCTTCTGAAGCCATGCCCCACTTTGTGGTTTAGCAAG  
 CATGGAGCTTGGCAAGGAAGCCATTGCCAAGGGATTGCTCAAGGAGGCTGCTCTGGTTTTAAACAAGCCCT  
 AATACCTACAGCAGCATTGGAGACTTTCTGGACTCCATGAACAGGAGAATCATGGAAACTGCTTCAAAGT  
 CTCAGACCCTGTGCTCAGAAAATGTCGTAGGAATGAACCTGGCACATACCCTGTCCAATGTTATCCTGAG  
 GCATTCCATTGATGAAGTTCACCAAAAAATATGATAATCGACCCCAATGACAACAGGCATTTCATCTGAA  
 ATTCTGGACACCTTAATGGAAAGTACAAAACAACCTGCTTTTAGATGTGATATGCTTCACGTTCAAGAAGA  
 TGAGTCATATTGTACGGCTTGGTGAATGTCCTGCTGCTTTCTAAGGAGACCATCAGAAGGAGGGAGAC  
 AGAACCAAGTGCAGCCATCTGATCCGGGTGCTAGTCAAGCTTGGACAAAAGCCACTGAATCCTCCAGC  
 AGCTCTCCACTTAGCAATTCACACAACACGAGTCTTGTCAACAATCTTGTGGATGGCATGTATTCAA  
 AACAAAGACAAGGGTGGAGTGAGGCCAGGCTCTTCAAGAACCCACGCTGCAGTCACAATATACAGTAG  
 TCACAGAGTGCCCGATTCTTCAACTGCTACAACATCCTCAAGGAAATATATCTGAAAGGAATAGCAGGA  
 GAGGATACAAAAAGCCCTCATCACAGTGAGAATGAATGCAGAGCCTCTCCGAAGGACAAAAGTCCCCAA  
 CGGTGAGCCAGTCCAGAAGTGGTCCCAGGAGGCTGAGGAGAGTATCCACCCAAACCCAAAGAAAAGTA  
 CAACTGTGCCACATCTCGCATCAACGAAGTTCAAGTCAACCTGTCTTGTAGGGGATGACCTGTGCTT  
 CCTGCTCAATCCACGCTTCAAACAAAGCATCCAGACATCTACTGCATTACAGACTTTGCGGAAGAATTAG  
 CAGACACGGTCTGCTCCATGGCAACTGAAATGACAGCATTGCTTGCCTTGACAACTCCAGTGGAAAACAAC  
 CTGGTTTTGTGCATGGAAAAGAGGGAGTGAGTTTCTGTGACACCAACGTACCCTGCCGATCCTTGAAG  
 AGGAAGAAGAGAGCCAGGGGAGCGGGACCGCTGTGAGGAAACAAGCCCTCCCGGCTCAGTGAATGAA  
 AGAGAACAGCGGACGACCCCTGAGCTTAAAGAAAAGCTGATGAACAGGGTTGTGGATGAGTCCATGAA  
 CCTTGAAGATGTCCAGATTCTGTCAATCTTTTGGCAATGAAGTGGCAGCCAAGATCATGAACCTAACG  
 GAGTTCTCTATGGTGGACGGCATGTGGCAGGCGCAGGGCTATCCCGGAATCGGTTACTGAGTGGCGACA  
 GGTGGAGCCGGCTGAAGGCCTCCAGCTGCGAAAGCATTCTGAGGAAGACTCCGAGGCCAGGGCCTATGT  
 CAACAGCCTGGGCTTAATGAGCACGCTGAGCCAGCCGGTCCAGCAGGGCCAGCTCTGTCTCCAAGCAGTGC  
 AGCTGTGAGAGCATCACCGATGAGTTTTCCAGGTTTATGGTGAACCAGATGGAAAATGAAGGAGAGGAT  
 TTGAGTTACTGCTGGATTACTATGCTGGCAAGAACGCCAGCAGCATTCTGAACTCAGCCATGCAACAGGC  
 GTGCCGAAAAGTGACCACCTCAGTGTGAGGCCTAGCTGTCCCTAAGCAGTCCAGCACAGAGAGCATC  
 ACTGAGGAGTTCTACAGGTACATGCTGAGGACATCGAAAGAGACAGCAGAGAAAGTGCCTCCTCCAGAC  
 GGAGCAGCCAGATTTGGACAGCCGGCCTGCTGTCTCCTTCTGCGATCCCCAGTGTGCCACAGACAGT  
 GTCCATGCCAGACAGCAGATCCCCATGTCCAGGCTGACAGTGAATGTGCCCATCAAAGCCAACTCTTTA  
 GATGGCTTTGCTCAGAACTGCCCACAAGATTTCTAAGCGTGCAGCCGGTCCAGTGCAGCGTCTCATCCG  
 GTCTCTGCAAACTGACTCTTGTGTATCGGAGAGGTGGGACTGACCACATCACCAACATGTTAATTCA  
 TGAAACGTGGGCTAGCTCCATTGAGGCTCTCATGCGCAAGAACAATAATTGTGGATGATGCAGAGGAA  
 GCTGACACTGAGCCTGTTTCTGGTGGCTCTCCCTCGCAAGCAGAGAAGTGTGCAATAGATTAGCTGCGA  
 GCAGGATGTGCAGTGGGCCAACTCTGCTTGTTCAGGAGTCTCTGATTGCCCGAGGAAAGACTCTGTTAC  
 CGAATGTAACAGCCCCCAGTGTATCTTTGAGCAAAACTGCTTCTTTACAACCACAGCCCTTTAGAT  
 TCTAAAAAAGAAACTTCCCTCGTGCCAGGACCCTGTACCAATAAACCCACAAAAGGGGATCACTTTGCTCGA  
 GGGAAAGTGCCTTTGATTAGATTGAAACAGATCAGAGAGAAGCCTGTGCTGGGGAACCTGAACCCTTCT  
 TTCCAAAAGCAGCCTCCTAGAGGAAGCAGAAGGGCATTGCAATGACAAAAACATCCAGATGTGGTGA  
 GGTGGAGACACAGCCGTGAGCGTTGTCAAATCCATAGTGACAGCCTTGATACCAGAGATGTACCAGAGG  
 CTGAAGCCTCCACAGAAGCCAGAGCCCCGATGAGGCCCCCAACCCTCCAAGCAGCAGCGAGGAGAGCAC  
 AGGCAGCTGGACCAGCTTGCCAATGAGGAAGACAACCCAGATGACACAAGTAGCTTTCTCCAGCTCAGT  
 GAGCGATCCATGAGTGAATTAGTAGAAGAAAAGAAGATTCTTAAAGGACAGTCAAGAACACAGAGGCAC  
 CTGCATCTGGACCGCTACGGGAACAGCCAGCCCCAGAGGAGCCTGCTGGTGTCAACTTTGACCTGGA  
 GCCAGAGTGTCCAGATGCCGAGCTCCGAGCCACTCTGCAGTGGATAGCTGCCTCTGAACTGGGGATTCCC  
 ACCATCTACTTTAAGAAATCTCAGGAAAACAGAATTGAAAAGTTTCTAGATGTCTGTCAGCTGGTTCATC  
 GGAAGTCTGAAAGTGGGTGATATCTTCCATGCAGTTGTCCAGTACTGCAAAATGCATGAGGAGCAGAA  
 GGATGGGAGACTGAGTCTTTGACTGGCTCTTGGAACTGGGA

ACGCGTACGCGGCCGCTCGAGCAGAACTCATCTCAGAAGAGGATCTGGCAGCAAATGATATCCTGGATT  
ACAAGGATGACGACGATAAGGTTTAA

**Protein Sequence:**

>RC215958 representing NM\_030623  
Red=Cloning site Green=Tags(s)

MDGNSLLSVPSNLESSRMYDVLEPQQGRGCGSSGSGPGNSITACKKVLRSNSLLESTDYWLQNQRMPQCI  
GFVEDKSENCASVCFVNLGVNKDECSTEHLQQKLVNVSPDLPKLISSMNVQQPKENEIVVLSGLASGNLQ  
ADFEVSQCPWLPDICLVQCARGNRPNSTNCIIFEINKFLIGLELVQERQLHLETNLIKLEDDTNCSSLSI  
EEDFLTASEHLEEESEVDES RNDYENINVSANVLESKQLKQATQVEWNCNKEKWL YALEDKYINKYPTPL  
IKTERSPENLTKNTALQSLDPSAKPSQWKREAVGNRQATHYHSEAFKQMEKSQALYIPKDAYFSMMD  
KDVPACAVAEQRSNLPDGHEDTRNALPPRQDGEVTTGKYATNLAEVSLQDAFIRLSQSQSTLPQESAV  
SVSVGSSLLPSCYSTKDTVVSRSWNEPKIVVVQSPDGSAAAPQPGISSWPEMEVSVETSSIPSGENSSR  
QPQSALEVALACAATVIGTISSPQATERLKMEQVVSNFPPGSSGALQTQAPQGLKEPSINEYSFPALCG  
MTQVASAVAVCGLGEREEVTCVAPSGSLPPAAEASEAMPPLCGLASMELGKEIAKGLLKEAALVLRP  
NTYSSIGDFLDSMNRIMETASKSQTLCSENVVRNELAHTLSNVILRHSIDEVHHKNMIIDPNDNRHSSE  
ILDTLMESTNQLLLDVICFTFKKMSHIVRLGECPAVL SKETIRRRETEPSCQPSDPGASQAWTKATESS  
SSPLSNHNTSLVINNLVDGMYSKQDKGGVRPGLFKNPTLQSQLSRSHRVPDSSTATTSSKEIYKGIAG  
EDTKSPHSENECRASSEQRSPVTSQSRSGSQEAEEIHPNTQEKYNCATSRINEVQVNL SLLGDDLLL  
PAQSTLQTKHPDIYCIDFAEELADTVVSMATEIAAICLDNSSGKQPFCAWKRGSEFLMTPNVPCRSLK  
RKKESQSGTAVRKHKPPRLSEIKRKTDEHPELKEKLMNRVVDESMNLEDVPDSVNL FANEVAAKIMNLT  
EFSMVDMWQAQGYPRNRLLSGDRWSRLKASSCEIPEEDSEARAYVNSLGLMSTLSQPVSRASSVSKQS  
SCESITDEF SRFMVNQMENEGRFELLDYYAGKNASSILNSAMQQACRKS D H L S V R P S C P S K Q S S T E S I  
TEEFYRYMLRDIERDSRESASSRRSSQIWTAGLLSPLRSPVCHRQSSMPDSRSPCSRLTVNVPIKANSL  
DGFAQNC PQDFLSVQPVSSASSSGLCKSDSCLYRRGGTDHITNMLIHETWASSIEALMRKNKIIVDDAEE  
ADTEPVSGGSPSQAEEKANRLAASRMCSGPTLLVQESLDCPRKDSVTECKQPPVSSL SKTASLTNHSPLD  
SKKETSSCQDPVPINHKRRSLCSREVPLIQIETDQREACAGEPEPFLSKSSLLEEAEGHSNDKNIPDVVR  
GGDTAVSACQIHSDSLDRDVP EAEASTEAPAPDEAPNPPSSSEESTGSWTQLANEEDNPDDTSSFLQLS  
ERSMSELVEEKKILKGQSESTEAPASGPPTGTASPQRSLLVINFDEPECPDAELRATLQWIAASELGIP  
TIYFKKSQENRIEKFLDVVQLVHRKSWKVGDI FHAVVQYCKMHEEQKDGRLSLFDWLLELG

TRTRPLEQKLI SEEDLAANDILDYKDDDDKV

**Chromatograms:**

[https://cdn.origene.com/chromatograms/mk8028\\_a11.zip](https://cdn.origene.com/chromatograms/mk8028_a11.zip)

**Restriction Sites:**

SgfI-MluI

**Cloning Scheme:**


**ACCN:** NM\_030623

**ORF Size:** 5013 bp

**OTI Disclaimer:** The molecular sequence of this clone aligns with the gene accession number as a point of reference only. However, individual transcript sequences of the same gene can differ through naturally occurring variations (e.g. polymorphisms), each with its own valid existence. This clone is substantially in agreement with the reference, but a complete review of all prevailing variants is recommended prior to use. [More info](#)

**OTI Annotation:** This clone was engineered to express the complete ORF with an expression tag. Expression varies depending on the nature of the gene.

**Components:** The ORF clone is ion-exchange column purified and shipped in a 2D barcoded Matrix tube containing 10ug of transfection-ready, dried plasmid DNA (reconstitute with 100 ul of water).

- Reconstitution Method:**
1. Centrifuge at 5,000xg for 5min.
  2. Carefully open the tube and add 100ul of sterile water to dissolve the DNA.
  3. Close the tube and incubate for 10 minutes at room temperature.
  4. Briefly vortex the tube and then do a quick spin (less than 5000xg) to concentrate the liquid at the bottom.
  5. Store the suspended plasmid at -20°C. The DNA is stable for at least one year from date of shipping when stored at -20°C.

**RefSeq:** [NM\\_030623.2](#)

**RefSeq Size:** 6825 bp

**RefSeq ORF:** 5016 bp

**Locus ID:** 80309

**UniProt ID:** [Q2M3C7](#)

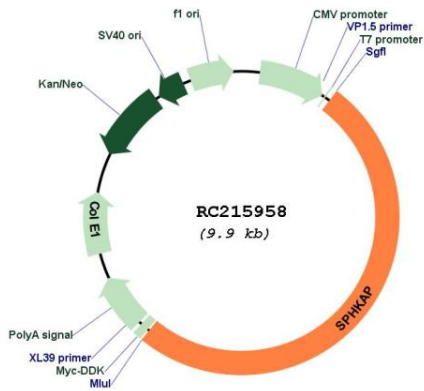
**Cytogenetics:** 2q36.3

**Protein Families:** Druggable Genome

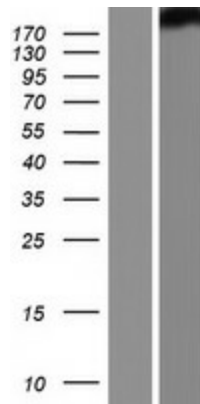
**MW:** 183.2 kDa

**Gene Summary:** Anchoring protein that binds preferentially to the type I regulatory subunit of c-AMP-dependent protein kinase (PKA type I) and targets it to distinct subcellular compartments. May act as a converging factor linking cAMP and sphingosine signaling pathways. Plays a regulatory role in the modulation of SPHK1.[UniProtKB/Swiss-Prot Function]

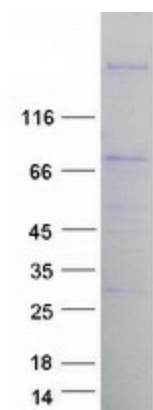
**Product images:**



Circular map for RC215958



Western blot validation of overexpression lysate (Cat# [LY410797]) using anti-DDK antibody (Cat# [TA50011-100]). Left: Cell lysates from untransfected HEK293T cells; Right: Cell lysates from HEK293T cells transfected with RC215958 using transfection reagent MegaTran 2.0 (Cat# [TT210002]).



Coomassie blue staining of purified SPHKAP protein (Cat# [TP315958]). The protein was produced from HEK293T cells transfected with SPHKAP cDNA clone (Cat# RC215958) using MegaTran 2.0 (Cat# [TT210002]).