

## Product datasheet for RC215952

### IL32 (NM\_001012631) Human Tagged ORF Clone

#### Product data:

**Product Type:** Expression Plasmids  
**Product Name:** IL32 (NM\_001012631) Human Tagged ORF Clone  
**Tag:** Myc-DDK  
**Symbol:** IL32  
**Synonyms:** IL-32alpha; IL-32beta; IL-32delta; IL-32gamma; NK4; TAIF; TAIFa; TAIFb; TAIFc; TAIFd  
**Mammalian Cell Selection:** Neomycin  
**Vector:** pCMV6-Entry (PS100001)  
**E. coli Selection:** Kanamycin (25 ug/mL)  
**ORF Nucleotide Sequence:** >RC215952 representing NM\_001012631.  
Blue=ORF Red=Cloning site Green=Tag(s)

```
GCTCGTTTGTAGTAACCGTCAGAATTTTGTAAACGACTACTATAGGGCGCCGGGAATTCGTCGACTG
GATCCGGTACCGAGGAGATCTGCCGCCGCGATCGCC
ATGTGCTTCCCGAAGGTCTCTCTGATGACATGAAGAAGCTGAAGGCCGAATGCACCAGGCCATAGAA
AGATTTTATGATAAAATGCAAAATGCAGAATCAGGACGTGGACAGGTGATGTCGAGCCTGGCAGAGCTG
GAGGACGACTTCAAAGAGGGCTACCTGGAGACAGTGGCGGCTTATTATGAGGAGCAGCACCCAGAGCTC
ACTCCTCTATTTGAAAAAGAAAGAGATGGATTACGGTGCCGAGGCAACAGATCCCCTGTCCCGGATGTT
GAGGATCCGCAACCGAGGAGCCTGGGGAGAGCTTTTGTGACAAGGTGATGAGATGGTTCCAGGCCATG
CTGCAGCGGCTGCAGACCTGGTGGCACGGGTTCTGGCCTGGGTGAAGGAGAAGGTGGTGGCCCTGGTC
CATGCAGTGCAGGCCCTCTGAAACAGTTCAGAGTTTCTGCTGCTCTGTGAGAGCTCTCATGTCC
TCTTCCAGTCTACGGAGCCCCACGGGGGACAAGGAGGAGCTGACACCCAGAAGTGCTCTGAACCC
CAATCCTCAAAA
ACGCGTACGCGGCCGCTCGAGCAGAACTCATCTCAGAAGAGGATCTGGCAGCAAATGATATCCTGGAT
TACAAGGATGACGACGATAAGGTTTAAACGGCCGGC
```

**Protein Sequence:** >Peptide sequence encoded by RC215952  
Blue=ORF Red=Cloning site Green=Tag(s)

```
MCFPKVLSDDMKLKLKARMHQAIERFYDKMQNAESGRGQVMSSLALEDDFKEGYLETVAAYYEEQHPPEL
TPLFEKERDGLRCRGNRSPVPDVEDPA TEPEGESFCDKVMRWFQAMLQRLQTWWHGLAWVKEKVVVALV
HAVQALWKQFQSFCCSLSELFMSSFQSYGAPRGDKEELTPQKCEPQSSK
TRTRPLEQKLI SEEDLAANDILDYKDDDDKV
```

**Chromatograms:** [https://cdn.origene.com/chromatograms/mk6453\\_b02.zip](https://cdn.origene.com/chromatograms/mk6453_b02.zip)

**Restriction Sites:** Sgfl-Mlul



[View online »](#)

**Cloning Scheme:**


**ACCN:** NM\_001012631

**ORF Size:** 564 bp

**OTI Disclaimer:** The molecular sequence of this clone aligns with the gene accession number as a point of reference only. However, individual transcript sequences of the same gene can differ through naturally occurring variations (e.g. polymorphisms), each with its own valid existence. This clone is substantially in agreement with the reference, but a complete review of all prevailing variants is recommended prior to use. [More info](#)

**OTI Annotation:** This clone was engineered to express the complete ORF with an expression tag. Expression varies depending on the nature of the gene.

**Components:** The ORF clone is ion-exchange column purified and shipped in a 2D barcoded Matrix tube containing 10ug of transfection-ready, dried plasmid DNA (reconstitute with 100 ul of water).

**Reconstitution Method:**

1. Centrifuge at 5,000xg for 5min.
2. Carefully open the tube and add 100ul of sterile water to dissolve the DNA.
3. Close the tube and incubate for 10 minutes at room temperature.
4. Briefly vortex the tube and then do a quick spin (less than 5000xg) to concentrate the liquid at the bottom.
5. Store the suspended plasmid at -20°C. The DNA is stable for at least one year from date of shipping when stored at -20°C.

**Note:** Plasmids are not sterile. For experiments where strict sterility is required, filtration with 0.22um filter is required.

**RefSeq Size:** 1157 bp

**RefSeq ORF:** 567 bp

**Locus ID:** 9235

**UniProt ID:** [P24001](#)

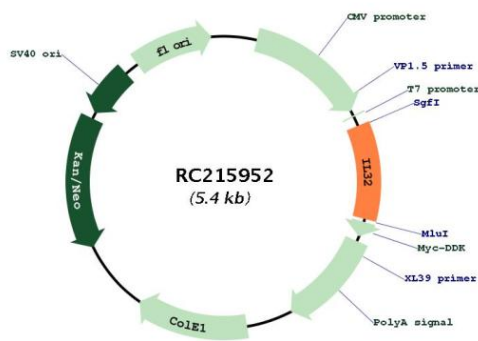
**Cytogenetics:** 16p13.3

**Protein Families:** Secreted Protein

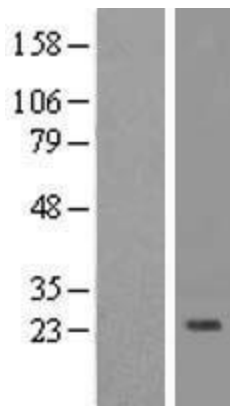
**MW:** 21.8 kDa

**Gene Summary:** This gene encodes a member of the cytokine family. The protein contains a tyrosine sulfation site, 3 potential N-myristoylation sites, multiple putative phosphorylation sites, and an RGD cell-attachment sequence. Expression of this protein is increased after the activation of T-cells by mitogens or the activation of NK cells by IL-2. This protein induces the production of TNFalpha from macrophage cells. Alternate transcriptional splice variants, encoding different isoforms, have been characterized. [provided by RefSeq, Jul 2008]

**Product images:**



Circular map for RC215952



Western blot validation of overexpression lysate (Cat# [LY422884]) using anti-DDK antibody (Cat# [TA50011-100]). Left: Cell lysates from untransfected HEK293T cells; Right: Cell lysates from HEK293T cells transfected with RC215952 using transfection reagent MegaTran 2.0 (Cat# [TT210002]).