

Product datasheet for **RC215941**

SLITRK2 (NM_032539) Human Tagged ORF Clone

Product data:

Product Type:	Expression Plasmids
Product Name:	SLITRK2 (NM_032539) Human Tagged ORF Clone
Tag:	Myc-DDK
Symbol:	SLITRK2
Synonyms:	CXorf1; CXorf2; SLITL1; TMEM257
Mammalian Cell Selection:	Neomycin
Vector:	pCMV6-Entry (PS100001)
E. coli Selection:	Kanamycin (25 ug/mL)



[View online »](#)

ORF Nucleotide Sequence:

>RC215941 representing NM_032539
 Red=Cloning site Blue=ORF Green=Tags(s)

TTTTGTAATACGACTCACTATAGGGCGGCCGGGAATTCGTCGACTGGATCCGGTACCGAGGAGATCTGCC
 GCC**CGCATCGCC**

ATGCTGAGCGCGCTTTGGTTCCCTCAGTGTGTTAACCGTGGCCGGGATCTTACAGACAGAGAGTCGAAAA
 CTGCCAAAGACATTTGCAAGATCCGCTGTCTGTGCGAAGAAAAGGAAAAGTACTGAATATCAACTGTGA
 GAACAAAGGATTTACAACAGTTAGCCTGTCCAGCCCCCAGTATCGAATCTATCAGCTTTTTCTCAAT
 GAAACCTCTTGACAAGACTGTATCAAACGAATTTGTCAATTACTCAAACGCGGTGACTCTTACCTAG
 GTAACAACGGGTTACAGGAGATCCGAACGGGGCATTCACTGGCCTGAAAACCTCTCAAAGACTGCATCT
 CAACAACAACAAGCTTGAGATATTGAGGGAGGACACCTTCTAGGCTGGAGAGCCTGGAGTATCTCCAG
 GCCGACTACAATTACATCAGTGCATCGAGGCTGGGGCATTCAAGCAACTTAACAAGCTCAAAGTGTCTCA
 TCCTGAATGACAACCTTCTGCTTCTACTGCCAGCAATGTGTTCCGCTTGTCTGCTGACCCACTTAGA
 CCTCAGGGGAATAGGCTAAAAGTAATGCCTTTTGTGGCGTCTTGAACATATTGGAGGGATCATGGAG
 ATTCAGCTGGAGGAAAATCCATGGAATTGCACTTGTGACTTACTTCTCTCAAGGCTGGCTAGACACCA
 TAACTGTTTTTGTGGGAGAGATTGTCTGTGAGACTCCCTTTAGGTTGCATGGGAAAAGACGTGACCCAGCT
 GACCAGGCAAGACCTCTGTCCCAGAAAAGTGCCAGTGATTCCAGTCAGAGGGGACGCCATGCTGACACC
 CACGTCCAAGGCTGTCACTACAATGAATCCTGCTCTCAACCAACAGGGCTCCGAAAGCCAGCCGGC
 CGCCAAAATGAGAAATCGTCCAACCTCCCGAGTGACTGTGTCAAAGGACAGGCAAAGTTTTGGACCCAT
 CATGGTGTACCAGACCAAGTCTCCTGTGCCTCTCACCTGTCCAGCAGCTGTGTCTGCACCTCTCAGAGC
 TCAGACAATGGTCTGAATGTAACCTGCCAAGAAAGGAAGTTCATAATATCTCTGACCTGCAGCCAAAAC
 CGACAGTCCAAGAAACTCTACCTAACAGGAACTATCTTCAAACGTCTATAAAGATGACCTTTAGA
 ATACAGTTCTTTGGACTTACTGCACTTAGGAAACAACAGGATTGCAGTCATTTCAGGAAGGTGCCTTTACA
 AACCTGACCAGTTTACGCAGACTTTATCTGAATGGCAATTACCTTGAAGTGTGTACCTTCTATGTTTG
 ATGGACTGCAGAGCTTGAATATCTCTATTTAGAGTATAATGTCATTAAGGAAATTAAGCCTCTGACCTT
 TGATGCTTTGATTAACCTACAGTACTGTTTCTGAACAACAACCTTCTTCGGTCTTACCTGATAATATA
 TTTGGGGGACGGCCCTAACAGGCTGAATCTGAGAAACAACCTTTTTCTCACCTGCCCGTAAAGGGG
 TTCTGGATCAGCTCCCGCTTTCATCCAGATAGATCTGCAGGAGAACCCCTGGGACTGTACCTGTGACAT
 CATGGGGCTGAAAGACTGGACAGAACATGCCAATTCCTGTCTCATTAATGAGGTGACTTGCGAATCT
 CCTGCTAAGCATGCAGGGGAGATACTAAAATTTCTGGGGAGGAGGCTATCTGTCCAGACAGCCAAACT
 TGTGAGATGGAACCGTCTGTCAATGAATCACAATACAGACACACCTCGGTGCTTAGTGTGTCTCTAG
 TTCTATCTGAACTACACACTGAAGTTCACCTGTCTGTCTTAATTCTGGGATTGCTTGTGTTTTTCATC
 TTATCTGTCTGTTTTGGGGCTGGTTTATTCGTCTTTGTCTTGAACGCCGAAAGGGAGTGCCGAGCGTTC
 CCAGGAATACCAACAACCTTAGACGTAAGCTCCTTTCAATTACAGTATGGGTCTTACAACACTGAGACTCA
 CGATAAAACAGACGGCCATGTCTACAATATACCCCCACCTGTGGGTGAGATGTGCAAAAACCCATC
 TACATGCAGAAGGAAGGAGACCCAGTAGCCTATTACCGAAACCTGCAAGAGTTGAGCTATAGCAACCTGG
 AGGAGAAAAAAGAAGAGCCAGCCACACCTGCTTACACAATAAGTGCCACTGAGCTGCTAGAAAAGCAGGC
 CACACCAAGAGAGCCTGAGCTGCTGTATCAAAAATTGCTGAGCGAGTCAAGGAACTTCCAGCCGAGGC
 CTAGTCCACTATAACTTTTGTACCTTACCTAAAAGGCAGTTTGCCCTTCTATGAATCTCGACGCCAAA
 ACCAAGACAGAATCAATAAAACCGTTTTATATGGAACCTCCAGGAAATGCTTTGTGGGGCAGTCAAAACC
 CAACCACCTTTACTGCAAGCTAAGCCGAATCAGAACCGGACTACCTCGAAGTTCTGAAAAACAACT
 GCAATCAGTCAGCTG

ACGCGTACGCGGCCGCTCGAGCAGAAACTCATCTCAGAAGAGGATCTGGCAGCAAATGATATCTGGATT
 ACAAGGATGACGACGATAAGGTTTAA

Protein Sequence: >RC215941 representing NM_032539
 Red=Cloning site Green=Tags(s)

MLSGVWFLSVLTVAGILQTESRKTAKDICKIRCLCEEKENVLNINCENKGFTTVSLQLPPQYRIYQLFLN
 GNLLTRLYPNEFVNYSNAVTLHLGNGLQEIRTGAFSGLKTLKRLHLNNKLEILREDTFLGLESLEYLQ
 ADYNYISAIEAGAFSKLNKLVILNDNLLLSPSNVFRFVLLTHLDRGNRLKVMPPFAGVLEHIGGIME
 IQLEENPNWCTCDLLPLKAWLDTITVFGEIVCETPFRLHGKDVTLTRQDLCPRKSADSSQRGSHADT
 HVQRLSPTMNPALNPTRAPKASRPPKMRNRPTPRVTVSKDRQSFGPIMVYQTKSPVPLTCPSSCVCTSQS
 SDNGLNVCQERKFTNISDLQPKPTSPKKLYLTGNYLQTVYKNDLLEYSSDLLHLGNNRIAVIQEAGFT
 NLTSLRRLYLNGNYLEVLPSMFDGLQSLQYLYLEYNVIKEIKPLTFDALINLQLLFLNNLLRSLPDNI
 FGGTALTRLNLRNNHFSHLPVKGVLQQLPAFIQIDLQENPWDCTCDIMGLKDWTEHANSPIINEVTCES
 PAKHAGEILKFLGREAIKPDSPNLSDGTVLSMNHNTDTPRSLVSPSSYPELHTEVPLSVLILGLLVVFI
 LSVCFGAGLVFVFLKRRKGVPSVPRNTNLDVSSFQYQYGSYNTETHDKTDGHVYNYIPPPVGMQCNPI
 YMQKEGDPVAYYRNLQEFYSYLNLEEKKEEPATPAYTISATELLEKQATPREPELLYQNIARVKELPSAG
 LVHYNFCTLPKRQFAPSYESRRQNQDRINKTVLYGTPRKFVGVQSKPNHPLLQAKPQSEPDYLEVLEKQT
 AISQL

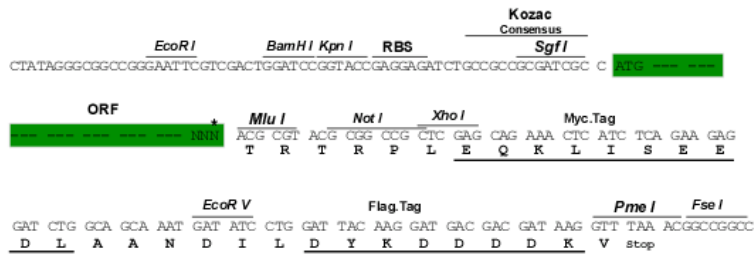
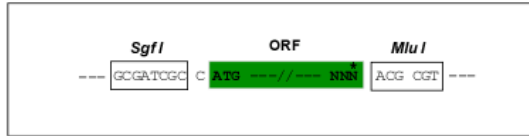
TRTRPLEQKLISEEDLAANDILDYKDDDDKV

Chromatograms: https://cdn.origene.com/chromatograms/mg4079_e01.zip

Restriction Sites: SgfI-MluI

Cloning Scheme:

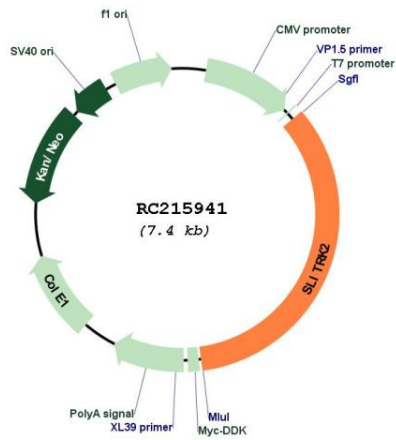
Cloning sites used for ORF Shuttling:



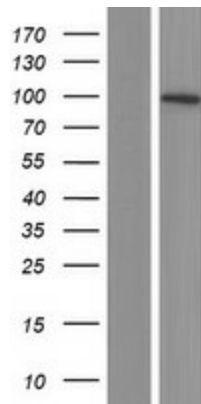
* The last codon before the Stop codon of the ORF

ACCN:	NM_032539
ORF Size:	2535 bp
OTI Disclaimer:	The molecular sequence of this clone aligns with the gene accession number as a point of reference only. However, individual transcript sequences of the same gene can differ through naturally occurring variations (e.g. polymorphisms), each with its own valid existence. This clone is substantially in agreement with the reference, but a complete review of all prevailing variants is recommended prior to use. More info
OTI Annotation:	This clone was engineered to express the complete ORF with an expression tag. Expression varies depending on the nature of the gene.
Components:	The ORF clone is ion-exchange column purified and shipped in a 2D barcoded Matrix tube containing 10ug of transfection-ready, dried plasmid DNA (reconstitute with 100 ul of water).
Reconstitution Method:	<ol style="list-style-type: none">1. Centrifuge at 5,000xg for 5min.2. Carefully open the tube and add 100ul of sterile water to dissolve the DNA.3. Close the tube and incubate for 10 minutes at room temperature.4. Briefly vortex the tube and then do a quick spin (less than 5000xg) to concentrate the liquid at the bottom.5. Store the suspended plasmid at -20°C. The DNA is stable for at least one year from date of shipping when stored at -20°C.
RefSeq:	NM_032539.1
RefSeq Size:	5022 bp
RefSeq ORF:	2538 bp
Locus ID:	84631
UniProt ID:	Q9H156
Cytogenetics:	Xq27.3
Protein Families:	Transmembrane
MW:	95.2 kDa
Gene Summary:	This gene encodes an integral membrane protein that contains two N-terminal leucine-rich repeats domains and contains C-terminal regions similar to neurotrophin receptors. The encoded protein may play a role in modulating neurite activity. Alternatively spliced transcript variants encoding the same protein have been described.[provided by RefSeq, Feb 2010]

Product images:



Circular map for RC215941



Western blot validation of overexpression lysate (Cat# [LY410066]) using anti-DDK antibody (Cat# [TA50011-100]). Left: Cell lysates from untransfected HEK293T cells; Right: Cell lysates from HEK293T cells transfected with RC215941 using transfection reagent MegaTran 2.0 (Cat# [TT210002]).