

## Product datasheet for RC215936

### OR1411 (NM\_001004734) Human Tagged ORF Clone

#### Product data:

Product Type:	Expression Plasmids
Product Name:	OR1411 (NM_001004734) Human Tagged ORF Clone
Tag:	Myc-DDK
Symbol:	OR1411
Synonyms:	OR5BU1; OR5BU1P
Mammalian Cell Selection:	Neomycin
Vector:	pCMV6-Entry (PS100001)
E. coli Selection:	Kanamycin (25 ug/mL)
ORF Nucleotide Sequence:	>RC215936 representing NM_001004734 Red=Cloning site Blue=ORF Green=Tags(s)

TTTTGTAATACGACTCACTATAGGGCGCCGGGAATTCGTCGACTGGATCCGGTACCGAGGAGATCTGCC  
GCC**CGATCGCC**

ATGGACAATCTCACAAAAGTGACAGAATTCCTGCTGATGGAGTTTTCTGGTATCTGGGAGCTGCAGGTGC  
TGCACGCCGGGCTGTTTCTGCTGATTTATCTGGCAGTGTGGTGGGGAACCTGCTCATCATTGCAGTCAT  
CACTCTCGATCAGCATCTTCACACCCCATGTACTTCTCCTGAAGAACCTCTCCGTTTTGGATCTGTGC  
TACATCTCAGTCACTGTGCCTAAATCCATCCGTAACCTCCCTGACTCGCAGAAGCTCCATCTTTATCTTG  
GCTGTGTGGCTCAAGTCTATTTTTCTCTGCCTTTGCATCTGCTGAGCTGGCCTTCTTACTGTCATGTC  
TTATGACCCTATGTTGCCATTTGCCACCCCTCCAATACAGAGCCGTGATGACATCAGGAGGGTGCAT  
CAGATGGCAGTCAACACCTGGCTAAGCTGCTTTTCTACGCAGCCGTCCACACTGGCAACATGTTTCGGG  
AGCACGTTTGCAGATCCAGTGTGATCCACCAGTCTTCCGTGACATCCCTCATGTGTTGGCCCTGGTTTC  
CTGTGAGGTTTTCTTTGTAGAGTTTTGACCCTGGCCCTGAGCTCATGCTTGGTTCTGGGATGCTTTATT  
CTCATGATGATCTCCTATTTCCAAATCTTCTCAACGGTGTCTCAGAATCCCTTCAGGACAGAGTCGAGCAA  
AAGCCTTCTCCACCTGCTCCCCCAGCTCATTGTATCATGCTCTTTCTTACCACAGGGCTTTTGTGCTC  
CTTAGGACCAATTGCAAAAAGCTGTCCATTGAGATTTAGTGATTGCTCTGACATACACAGTTTTGCCT  
CCCTTCTCAATCCCATCATATATAGTCTTAGGAATAAGGAGATTAACACAGCCATGTGGAGACTCTTTG  
TGAAGATATATTTCTGCAAAAG

**ACGCGT**ACGCGGCCGCTCGAGCAGAAACTCATCTCAGAAGAGGATCTGGCAGCAAATGATATCCTGGATT  
ACAAGGATGACGACGATAAGGTTTAA



[View online »](#)

**Protein Sequence:** >RC215936 representing NM\_001004734  
Red=Cloning site Green=Tags(s)

MDNLTKVTEFLLMEFSGIWELQVLHAGLFLLIYLAVLVGNLLIIAVITLDQHLHTPMYFFLKNLSVLDLC  
 YISVTPKSIIRNSLTRRSSISYLGCVAYVFFSAFASAELAF TVMSYDRYVAICHPLQYRAVMTSGGCY  
 QMAVTTWLSCFSYAAVHTGNMFREHVCRSSVIHQFFRDIPHVLALVSCEVFFVEFLTALSSCLVLGCFI  
 LMMISYFQIFSTVLRIPSGQSRAKAFSTCSPQLIVIMLFLT TGLFAALGPIAKALSIQDLVIALTYTVLP  
 PFLNP I IYSLRNKEIKTAMWRLFVKIYFLQK

TRTRPLEQKLISEEDLAANDILDYKDDDDKV

**Chromatograms:** [https://cdn.origene.com/chromatograms/mk8002\\_g05.zip](https://cdn.origene.com/chromatograms/mk8002_g05.zip)

**Restriction Sites:** SgfI-MluI

**Cloning Scheme:**



**ACCN:** NM\_001004734

**ORF Size:** 933 bp

**OTI Disclaimer:** The molecular sequence of this clone aligns with the gene accession number as a point of reference only. However, individual transcript sequences of the same gene can differ through naturally occurring variations (e.g. polymorphisms), each with its own valid existence. This clone is substantially in agreement with the reference, but a complete review of all prevailing variants is recommended prior to use. [More info](#)

**OTI Annotation:** This clone was engineered to express the complete ORF with an expression tag. Expression varies depending on the nature of the gene.

**Components:** The ORF clone is ion-exchange column purified and shipped in a 2D barcoded Matrix tube containing 10ug of transfection-ready, dried plasmid DNA (reconstitute with 100 ul of water).

**Reconstitution Method:**

1. Centrifuge at 5,000xg for 5min.
2. Carefully open the tube and add 100ul of sterile water to dissolve the DNA.
3. Close the tube and incubate for 10 minutes at room temperature.
4. Briefly vortex the tube and then do a quick spin (less than 5000xg) to concentrate the liquid at the bottom.
5. Store the suspended plasmid at -20°C. The DNA is stable for at least one year from date of shipping when stored at -20°C.

**RefSeq:** [NM\\_001004734.1](#), [NP\\_001004734.1](#)

**RefSeq Size:** 936 bp

**RefSeq ORF:** 936 bp

**Locus ID:** 401994

**UniProt ID:** [A6ND48](#)

**Cytogenetics:** 1q44

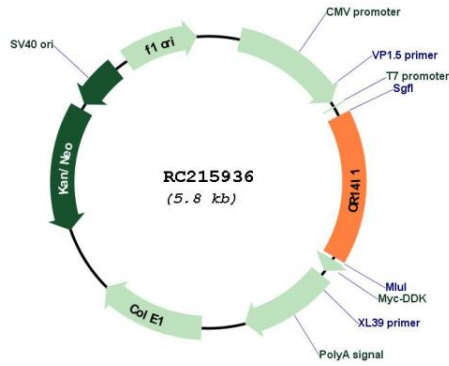
**Protein Families:** Transmembrane

**Protein Pathways:** Olfactory transduction

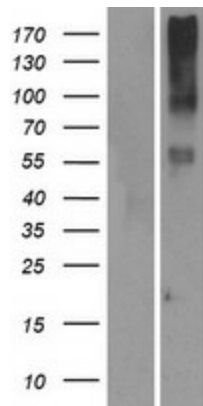
**MW:** 35 kDa

**Gene Summary:** Olfactory receptors interact with odorant molecules in the nose, to initiate a neuronal response that triggers the perception of a smell. The olfactory receptor proteins are members of a large family of G-protein-coupled receptors (GPCR) arising from single coding-exon genes. Olfactory receptors share a 7-transmembrane domain structure with many neurotransmitter and hormone receptors and are responsible for the recognition and G protein-mediated transduction of odorant signals. The olfactory receptor gene family is the largest in the genome. The nomenclature assigned to the olfactory receptor genes and proteins for this organism is independent of other organisms. [provided by RefSeq, Jul 2008]

Product images:



Circular map for RC215936



Western blot validation of overexpression lysate (Cat# [LY423917]) using anti-DDK antibody (Cat# [TA50011-100]). Left: Cell lysates from untransfected HEK293T cells; Right: Cell lysates from HEK293T cells transfected with RC215936 using transfection reagent MegaTran 2.0 (Cat# [TT210002]).