

## Product datasheet for RC215926

### ATP8B2 (NM\_001005855) Human Tagged ORF Clone

#### Product data:

Product Type:	Expression Plasmids
Product Name:	ATP8B2 (NM_001005855) Human Tagged ORF Clone
Tag:	Myc-DDK
Symbol:	ATP8B2
Synonyms:	ATPID
Mammalian Cell Selection:	Neomycin
Vector:	pCMV6-Entry (PS100001)
E. coli Selection:	Kanamycin (25 ug/mL)
ORF Nucleotide Sequence:	>RC215926 representing NM_001005855 Red=Cloning site Blue=ORF Green=Tags(s)

TTTTGTAATACGACTCACTATAGGGCGCCGGGAATTCGTCGACTGGATCCGGTACCGAGGAGATCTGCC  
GCC**CGATCGCC**

ATGGCAGTGTGTGCAAAAAAGCGCCCCCAGAAGAAGAAAGGAGGGCGCGGGCTAATGACCGAGAATACA  
ATGAGAAATCCAGTATGCGAGTAACTGCATCAAGACCTCCAAGTACAATATTCTCACCTCCTGCCTGT  
CAACCTCTTTGAGCAGTCCAGGAAGTTGCCAACACTTACTTCTGTTCTCCTCATTCTGCAGTTGATC  
CCCCAGATCTCTCCCTGTCTGGTTCACCACCATTGTGCCTTTGGTTCTTGTCTCACCATCACAGCTG  
TTAAAGATGCCACTGATGACTATTTCCGCCACAAGAGCGATAACCAGGTGAATAACCGCCAGTCTCAGGT  
GCTGATCAATGGAATCTCCAGCAGGAGCAGTGGATGAATGTCTGTGTTGGTGATATTATCAAGCTAGAA  
AATAACCGAGTTTGTGGCGCGGATCTCCTCCTCTTCCAGCAGTGAAGCCCATGGGCTGTGTTACATAG  
AGACAGCAGAAGTTGATGGCGAGACCAACATGAAAGTACGTGAGGCGATTCCAGTCACTCAGAATTGGG  
AGACATCAGTAAGCTTGCCAAGTTTACCGGTGAAGTGTCTGTGAACCTCCCAACAACAACTGGACAAA  
TTCAGCGGAACCTCTACTGGAAGGAAAATAAGTTCCCTCTGAGCAACCAGAACATGCTGCTGCGGGGCT  
GTGTGCTGCGAAACCCGAGTGGTGCTTCGGGCTGGTCACTTTGCGAGTCCCAGACTAAGCTGATGCA  
AAACAGCGGCAGAACAAAGTTCAAAGAACGAGTATCGATCGCCTAATGAATACCTGGTGCTCTGGATT  
TTTGGATTCTGGTTTGCATGGGGTGATCTTGCCATTGGCAATGCCATCTGGGAGCAGGAGTGGGGA  
TGGTTTTCCAGGTCTACCTGCCGTGGGATGAGGCAGTGGACAGTGCCTTCTCTGCTTCTCTCCTT  
CTGGTCTACATCATCATCCTCAACACCGTTGTGCCATTTCACTCTATGTCAGGTATGTGCCTTCTCTG  
ACCTGGGCTCTCCAGGGAGTCAGGCGGTCCCATAGAATTTTTCTTTCTATGAAGATGAAGTCTTGA  
GAAGTAACGAGAAGTCTCTTCTTCTGTACTGTAACATT

**ACGCGT**ACGCGGCCGCTCGAGCAGAACTCATCTCAGAAGAGGATCTGGCAGCAATGATATCCTGGATT  
ACAAGGATGACGACGATAAGGTTTAA



[View online »](#)

**Protein Sequence:** >RC215926 representing NM\_001005855  
Red=Cloning site Green=Tags(s)

MAVCAKKRPPEEERRARANDREYNEKFQYASNCIKTSKYNILTFLPVNLFQFQEVANTYFLFLILQLI  
 PQISSLWFTTIIVPLVLTITAVKDATDDYFRHKSDNQVNNRQSQVLINGILQQEQWMNVCVGDIKLE  
 NNQFVAADLLLLSSSEPHGLCYIETAELDGETNMKVRQAIPVTSELGDISKLAKFDGEVICEPPNNKLDK  
 FSGTLYWKENKFPLSNQNMLLRGCVLRNTEWCFGLVIFAGPDTKLMQNSGRTKFKRTSIDRLMNTLVLWI  
 FGFLVCMGVILAIIGNAIWEHEVGMRFQVYLPWDEAVDSAFFSGFLSFWSYIILNTVVPISLYVRYVPSL  
 TWGLSRESGGPIELFFSMKMKSLRSNEKSSSSCTVNI

TRTRPLEQKLISEEDLAANDILDYKDDDDKV

**Chromatograms:** [https://cdn.origene.com/chromatograms/ja1309\\_f02.zip](https://cdn.origene.com/chromatograms/ja1309_f02.zip)

**Restriction Sites:** SgfI-MluI

**Cloning Scheme:**



**ACCN:** NM\_001005855

**ORF Size:** 1161 bp

**OTI Disclaimer:** The molecular sequence of this clone aligns with the gene accession number as a point of reference only. However, individual transcript sequences of the same gene can differ through naturally occurring variations (e.g. polymorphisms), each with its own valid existence. This clone is substantially in agreement with the reference, but a complete review of all prevailing variants is recommended prior to use. [More info](#)

**OTI Annotation:** This clone was engineered to express the complete ORF with an expression tag. Expression varies depending on the nature of the gene.

**Components:** The ORF clone is ion-exchange column purified and shipped in a 2D barcoded Matrix tube containing 10ug of transfection-ready, dried plasmid DNA (reconstitute with 100 ul of water).

**Reconstitution Method:**

1. Centrifuge at 5,000xg for 5min.
2. Carefully open the tube and add 100ul of sterile water to dissolve the DNA.
3. Close the tube and incubate for 10 minutes at room temperature.
4. Briefly vortex the tube and then do a quick spin (less than 5000xg) to concentrate the liquid at the bottom.
5. Store the suspended plasmid at -20°C. The DNA is stable for at least one year from date of shipping when stored at -20°C.

**RefSeq:** [NM\\_001005855.2](#)

**RefSeq Size:** 1560 bp

**RefSeq ORF:** 1164 bp

**Locus ID:** 57198

**UniProt ID:** [P98198](#)

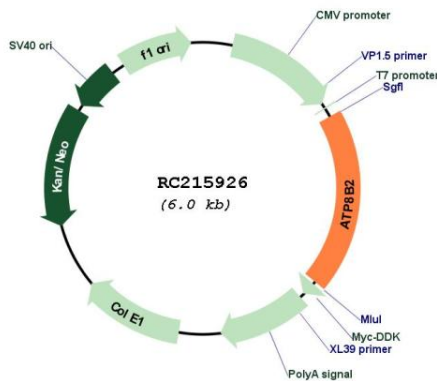
**Cytogenetics:** 1q21.3

**Protein Families:** Transmembrane

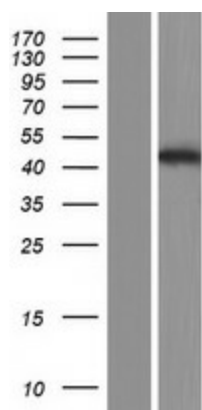
**MW:** 44 kDa

**Gene Summary:** The protein encoded by this gene belongs to the family of P-type cation transport ATPases, and to the subfamily of aminophospholip-transporting ATPases. The aminophospholip translocases transport phosphatidylserine and phosphatidylethanolamine from one side of a bilayer to another. Alternatively spliced transcript variants encoding different isoforms have been identified. [provided by RefSeq, Jul 2008]

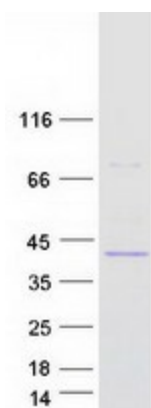
**Product images:**



Circular map for RC215926



Western blot validation of overexpression lysate (Cat# [LY423664]) using anti-DDK antibody (Cat# [TA50011-100]). Left: Cell lysates from untransfected HEK293T cells; Right: Cell lysates from HEK293T cells transfected with RC215926 using transfection reagent MegaTran 2.0 (Cat# [TT210002]).



Coomassie blue staining of purified ATP8B2 protein (Cat# [TP315926]). The protein was produced from HEK293T cells transfected with ATP8B2 cDNA clone (Cat# RC215926) using MegaTran 2.0 (Cat# [TT210002]).