

## Product datasheet for **RC215919**

### Vasopressin V1b receptor (AVPR1B) (NM\_000707) Human Tagged ORF Clone

#### Product data:

Product Type:	Expression Plasmids
Product Name:	Vasopressin V1b receptor (AVPR1B) (NM_000707) Human Tagged ORF Clone
Tag:	Myc-DDK
Symbol:	Vasopressin V1b receptor
Synonyms:	AVPR3; V1bR
Mammalian Cell Selection:	Neomycin
Vector:	pCMV6-Entry (PS100001)
E. coli Selection:	Kanamycin (25 ug/mL)



[View online »](#)

**ORF Nucleotide Sequence:**

>RC215919 representing NM\_000707  
 Red=Cloning site Blue=ORF Green=Tags(s)

TTTTGTAATACGACTCACTATAGGGCGGCCGGGAATTCGTCGACTGGATCCGGTACCGAGGAGATCTGCC  
 GCC**GCGATCGCC**

ATGGATTCTGGGCTCTGTGGGATGCCAACCCACCCCTCGGGGCACCCTCTCTGCCCAATGCCACAA  
 CACCCTGGCTGGGCCGGGATGAGGAGCTGGCCAAGGTGGAGATCGGAGTCTGGCCACTGTCCTGGTGCT  
 GCGCACCAGGGGCAACCTGGCTGTGCTGCTGACCTGGGCCAGCTGGGCCGAAGCGCTCCCGCATGCAC  
 CTGTTCTGTGCTGCACTTAGCCCTGACAGACCTGGCCGTGGCGCTCTCCAGGTGCTGCCACAGCTGCTGT  
 GGGACATCACCTACCGCTTCCAGGGCCCCGACCTCCTGTGCAGGGCCGTCAGTACCTGCAGGTGCTCAG  
 CATGTTTGCTCCACCTACATGCTGCTGGCCATGACGCTGGACCGCTACCTGGTGTCTGTCACCCCTG  
 CGCAGCCTCCAGCAGCCAGGCCAGTCCACCTACCTGCTCATCGCTGCTCCCTGGTGTGCGCCGACATCT  
 TCAGCCTCCCTCAAGTCTTCATTTTTCCCTGCGGGAGGTGATCCAGGGCTCAGGGGTGCTGGACTGCTG  
 GGCAGACTTCGGCTTCCCTTGGGGGCCACGGGCCTACCTCACCTGGACCACCCTGGCTATCTTCGTTCCG  
 CCGGTGACCATGCTCACGGCCTGCTACAGCCTCATCTGCCATGAGATCTGTAAAAACCTAAAAGTCAAGA  
 CACAGGCCTGGCGGTGGGAGGAGGGGGCTGGAGGACTTGGGACAGGCCCTCACCTTCCACCTTAGCTGC  
 CACCACTCGGGGGCTGCCATCTCGGGTCAGCAGCATCAACACCATCTCACGGGCCAAGATCCGAACAGTG  
 AAGATGACCTTTGTCATCGTGTGGCTACATCGCTTGTGGCTCCCTTCTTCAAGTGTCCAGATGTGGT  
 CCGTGTGGGACAAGAATGTCCTGATGAAGATCCACCAATGTGGCTTTCACCATCTCTATGCTTTTGGG  
 CAACCTCAACAGCTGTGCAACCCTGGATCTACATGGGCTTCAACAGCCACCTGTTACCGCGGCCCTG  
 CGTCACCTTGCCTGCTGTGGGGTCCCCAGCCAGGATGCGCCGGCGGCTCTCCAGCCAGCCTCTCGA  
 GCCGCCACACACGCTGCTGACCCGCTCCAGCTGCCCGGCCACCCTCAGCCTCAGCCTCAGCCTAACCT  
 CAGTGGGAGGCCAGGCCTGAAGAGTACCAAGGACTTGGAGCTGGCAGATGGGGAAGGCACCGCTGAG  
 ACCATCATCTTT

**ACGCGT**ACGCGGCCGCTCGAGCAGAACTCATCTCAGAAGAGGATCTGGCAGCAAATGATATCCTGGATT  
 ACAAGGATGACGACGATAAGGTTTAA

**Protein Sequence:**

>RC215919 representing NM\_000707  
 Red=Cloning site Green=Tags(s)

MDSGPLWDANPTPRGTLAPNATTPWLGRDEELAKVEIGVLATVVLATGGNLAVLLTLGQLGRKSRMH  
 LFVHLHALTDLAVALFQVLPQLLWDITYRFQGPDLLCRAVKYLQVLSMFASTYMLLAMTLDRYLAVCHPL  
 RSLQQPGQSTYLLIAAPWLLAAIFSLPQVFIIFSLREVIQSGVLDWADFQFPWGPWAYL TWTTLAIFVP  
 PVTMLTACYSLICHEICKNLKVKTAWRVGGGGWRTWDRPSPSTLAATTRGLPSRVSSINTISRKIRTV  
 KMTFVIVLAYIACWAPFFSVQMWSVWDKNVPDEDSTNVAFTISMLLGNLNSCCNPWIYMGFNHLLPRPL  
 RHLACCGPQPRMRRRLSDGSLSSRHHTLLTRSSCPATLSLSLTL SGRPRPEESPRDLELADGEGTAE  
 T IIF

**TR**TRPLEQKLISEEDLAANDILDYKDDDDKV

**Chromatograms:**

[https://cdn.origene.com/chromatograms/mk6114\\_f04.zip](https://cdn.origene.com/chromatograms/mk6114_f04.zip)

**Restriction Sites:**

Sgfl-Mlul

**Cloning Scheme:**


**ACCN:** NM\_000707

**ORF Size:** 1272 bp

**OTI Disclaimer:** The molecular sequence of this clone aligns with the gene accession number as a point of reference only. However, individual transcript sequences of the same gene can differ through naturally occurring variations (e.g. polymorphisms), each with its own valid existence. This clone is substantially in agreement with the reference, but a complete review of all prevailing variants is recommended prior to use. [More info](#)

**OTI Annotation:** This clone was engineered to express the complete ORF with an expression tag. Expression varies depending on the nature of the gene.

**Components:** The ORF clone is ion-exchange column purified and shipped in a 2D barcoded Matrix tube containing 10ug of transfection-ready, dried plasmid DNA (reconstitute with 100 ul of water).

**Reconstitution Method:**

1. Centrifuge at 5,000xg for 5min.
2. Carefully open the tube and add 100ul of sterile water to dissolve the DNA.
3. Close the tube and incubate for 10 minutes at room temperature.
4. Briefly vortex the tube and then do a quick spin (less than 5000xg) to concentrate the liquid at the bottom.
5. Store the suspended plasmid at -20°C. The DNA is stable for at least one year from date of shipping when stored at -20°C.

**Note:** Plasmids are not sterile. For experiments where strict sterility is required, filtration with 0.22um filter is required.

**RefSeq:** [NM\\_000707.5](#)

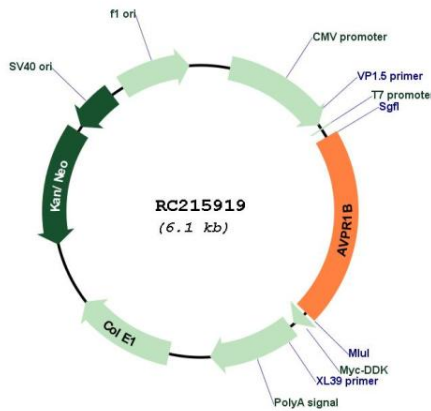
**RefSeq Size:** 2273 bp

**RefSeq ORF:** 1275 bp

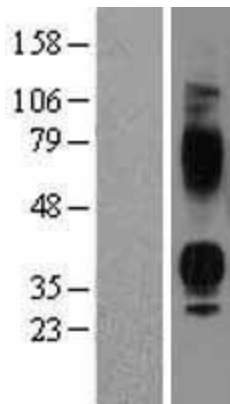
**Locus ID:** 553

**UniProt ID:** [P47901](#)  
**Cytogenetics:** 1q32.1  
**Protein Families:** Druggable Genome, GPCR, Transmembrane  
**Protein Pathways:** Calcium signaling pathway, Neuroactive ligand-receptor interaction, Vascular smooth muscle contraction  
**MW:** 46.8 kDa  
**Gene Summary:** The protein encoded by this gene acts as receptor for arginine vasopressin. This receptor belongs to the subfamily of G-protein coupled receptors which includes AVPR1A, V2R and OXT receptors. Its activity is mediated by G proteins which stimulate a phosphatidylinositol-calcium second messenger system. The receptor is primarily located in the anterior pituitary, where it stimulates ACTH release. It is expressed at high levels in ACTH-secreting pituitary adenomas as well as in bronchial carcinoids responsible for the ectopic ACTH syndrome. A spliced antisense transcript of this gene has been reported but its function is not known. [provided by RefSeq, Jul 2008]

### Product images:



Circular map for RC215919



Western blot validation of overexpression lysate (Cat# [LY400237]) using anti-DDK antibody (Cat# [TA50011-100]). Left: Cell lysates from untransfected HEK293T cells; Right: Cell lysates from HEK293T cells transfected with RC215919 using transfection reagent MegaTran 2.0 (Cat# [TT210002]).