

## Product datasheet for RC215916

### TSHZ1 (NM\_005786) Human Tagged ORF Clone

#### Product data:

Product Type:	Expression Plasmids
Product Name:	TSHZ1 (NM_005786) Human Tagged ORF Clone
Tag:	Myc-DDK
Symbol:	TSHZ1
Synonyms:	CAA; NY-CO-33; SDCCAG33; TSH1
Mammalian Cell Selection:	Neomycin
Vector:	pCMV6-Entry (PS100001)
E. coli Selection:	Kanamycin (25 ug/mL)
ORF Nucleotide Sequence:	>RC215916 representing NM_005786 Red=Cloning site Blue=ORF Green=Tags(s)

TTTTGTAATACGACTCACTATAGGGCGGCCGGAATTCGTCGACTGGATCCGGTACCGAGGAGATCTGCC  
GCC**CGATCGCC**

ATGTGCAATGAAGAGACGGAGATCAAAGAGGCGCAGAGCTACCAGAACTCCCCAGTCAGCTCTGCGACTA  
ACCAGGACGCCGGCTACGGGTCGCCCTTCAGTGAGAGCAGCGACCAGCTAGCCATTTCAAAGGCTCTTC  
CTCTCGAGAAGAGAAGGAGGATCCGCAGTGTCCCAGACAGCGTCTCGTACCCCCAGGACAGCCTGGCAGAG  
ATCAAAGCTGTGTATGCAAACCTTGTCTCCGAGTCTGCTGGTCCAGCTTAGCTCTGGATTTAAAGAAGT  
CGGGTTCACCACCAGCACCAACGATGCCAGCCAGAAGGAGAGCTCCGCCCCACCCCCACACCCCCAC  
CTGCCCGTCTCAGCACCCTGGCCCCACACGAGCAGCCAGCAGCTGCAGCTCCAGCACCAGCCAC  
AGCAGTACCACAGTACCAGCAGCAGCTCCGGGTACGACTGGCACCAGGCTGCACTGGCCAAAGCGTGC  
AGCAGAGCTCCTCGTATGGGCTGCTTCTGAGCCAGCCTGTTACGACCCGTGCACTCTACCGCCAGAA  
CAACAAGCTCTACGGCTCCGTCTTACGGGCGCCAGCAAGTTCGGTGCAAAGACTGCAGTGCAGCGTAC  
GACACGCTGGTGGAACTGACGGTGCACATGAACGAGACAGGCCACTACCGTGACGACAACAGGGACAAGG  
ACTCCGAGAAGACCAAGAGGTGGTCCAAGCCAGGAAGCGCTCCCTGATGGAGATGGAGGGGAAGGAGGA  
TGCCCAGAAGGTGCTGAAGTGCATGTACTGTGGACACTCCTTTGAGTCTTGCAGGACCTCAGCGTCCAC  
ATGATCAAAACCAAGCATTACCAGAAAGTGCCTCTGAAGGAGCCAGTGCCAGCCATCACCAAACTGGTCC  
CTCCACCAAAAAGCGGGCGCTTCAGGACCTGGCGCCCCCTGCTCCCTGAGCCAGCAGGAATGGCCGC  
AGAGGTGGCCCTGAGTGAAGTGCAGCAAGGATCAGAAAGCAGCAACCCGTACGTCACGCCAATAACCGC  
TATGGCTACCAGAATGGCGCCAGCTACACCTGGCAGTTTGAGGCCGCAAGGCGCAGATCCTCAAGTGCA  
TGGAGTGTGGCAGCTCCCACGACAGCTGCAGCAGCTCACCGCCACATGATGGTACCAGGGCACTTCTT  
GAAAGTGACCACCTCGGTTCTAAGAAGGGCAAGCAGTTGGTGTGGACCCTGTGGTGGAAAGAGAAGATC  
CAGTCCATCCCCTACCAGCCACCCACACGCGGCTGCCGGCCTCCAGCATCAAAAAGCAGCCCGACT  
CTCCCGGGGTCCAGACTTCTGAAGAAAAGAAAGGCCAGAGAAGGAGAAGCCGCTGTGGCTGGCGA  
CGCGGAGAAGATCAAGGAGGAGAGTGAGGACAGCTTGAGAAAATTTGAGCCAGCACCTGTACCGGTAC



[View online >](#)

CTGCGTGAGGAGGACCTGGACGACAGCCCCAAGGGAGGGCTGGACATTCTCAAGTCCCTGGAGAATACCG  
TCTCCACGGCCATTAGCAAAGCTCAGAATGGTGCGCCCTCATGGGGTGGCTACCCAGCATCCATGCAGC  
CTACCAGCTCCCGGGCACCCTGAAGCCACTGCCGGCGCCGTGCAGAGCGTGCAGGTGCAGCCGCTCTAT  
GCTGGCGCGTGAAGTCGCTGTCTCCGCCGAGCACAACGCCCTCTGCACTCCCAGGGAGCCTCACGC  
CCCCACCCACAAGAGCAACGTGTCCATGGAGGAGCTGGTGGAGAAGGTACGGGCAAGGTCAACAT  
CAAGAAGGAGGAGAGACCCCTGAGAAGGAGAAGAGCTCCCTGGCCAAGGCTGCGTCCCCATAGCAAAA  
GAGAATAAGATTTCCCGAAAACGGAGGAAGTCAGCGGCAAACCCACAGAAGAAGGGCCCTGAGCCGAGA  
CTGGGAAGGCCAAAAAGGAGGGACCGCTGGACGTTACACCCCAAATGGCACAGAGCCTCTCAAAGCAAA  
GGTCACCAACGGCTGTAACAACCTGGGGATCATCATGGACCCTACCGAGCCTTCCTTCATCAACCCG  
CTGAGCGCTTTCAGTCCATCATGAACACCCACCTGGGCAAGGTGTCCAAGCCCGTGAAGTCCCTCGCTGG  
ACCCGCTGGCGATGCTGTACAAGATCAGCAACAGCATGCTGGACAAGCCGGTGTACCCCGCCACCCCTGT  
GAAGCAGGCCGATGCCATCGACCGCTACTATTGAAAACAGCGACCAGCCATTGACTTAACCAAGTCC  
AAGAACAAGCCGCTGGTGTCCAGCGTGGCTGATTCGGTGGCATCACCTCTGCGGGAGAGCGCACTCATGG  
ACATCTCCGACATGGTGA AAAACCTCACAGGCCGCTGACGCCAAAGTCTCCACGCCCTCCACAGTTTC  
AGAGAAGTCCGATGCTGATGGCAGCAGCTTTGAGGAGGCGTTGGACGAGCTGTACCGGTCCACAAGAGG  
AAGGGCCGGCAGTCCAAC TGAACCCGACGACCTTCTATCCTGCAAGGCCAGTTCGCCTCGAGCTTGC  
GGGAGACCACAGAGGGCAAGTACATCATGTCCGACTTGGGCCCGCAGGAGAGGGTGCACATCTCGAAGTT  
TACTGGGCTCTCCATGACCACCATCAGCCACTGGCTGGCCAATGTGAAGTACCAGTTGAGGAGGACAGGG  
GGAACGAAATTCCTAAAGAACCTGGACACAGGGCATCCTGTTTTCTTTGCAACGATTGTGCCTCTCAGT  
TCAGAAGTCTTACATACATAAGTCAATTTGGAGACACACTTGGGCTTTCAGCCTGAAGGATCTCTCAA  
GCTGCCACTCAATCAGATTCAAGAACAGCAGAAATGTTTCGAAAGTCTCCACCAACAAAACCTGGGCCCA  
CTGGGGGCCACCGAGGAAGACTTGGGCTCCACATTCGAATGTAAGCTCTGCAACCGGACTTTTGCAGCA  
AGCACGCAAGTCAAAC TGCACCTTAGTAAGACCCACGGCAAGTCTCCCGAGGACCCTGATCTATGTGAC  
TGAGTTGGAGAAACAG

ACGCGTACGCGGCCGCTCGAGCAGAAACTCATCTCAGAAGAGGATCTGGCAGCAAATGATATCCTGGATT  
ACAAGGATGACGACGATAAGGTTTAA

**Protein Sequence:**

>RC215916 representing NM\_005786  
Red=Cloning site Green=Tags(s)

MCNEETEIKEAQSYQNSPVSSATNQDAGYGSFSESSDQLAHFKGSSSREEKEDPQCPDSVSYPDLSLAQ  
IKAVYANLFSWSCWSSLALDLKKSSTTSTNDASQKESAPTPPTCPVSTTGPTTSTPSTSCSSSTSH  
SSTTSTSSSSGYDWHQAALAKTLQQTSSYGLLPEPSLFTVQLYRQNNKLYGSVFTGASKFRCKDCSAAY  
DTLVELTVHMNETGHYRDDNRDKDSEKTRWSKPRKRLMEMEGKEDAQKVLKCMYCGHSFESLQDLSVH  
MIKTKHYQKVPLKEPVAITKLVPSTKKRALQDLAPPCSEPEAGMAAEVALSESAKDQKAANPYVTPNRR  
YGYQNGASYTWQFEARKAQILKCMCEGSSHDTLQQLTAHMMVTGHFLKVTTASAKKKGQLVLDPVVEEKI  
QSIPLPPTTHTRLPASSIKKQPDSPAGSTTSEEKKEPEKEKPPVAGDAEKIKEESEDSELEKFEPTLYPY  
LREEDLDDSPKGLDILKSLENTVSTAI SKAQNGAPSWGYPYIHAAYQLPGTVKPLPAAVQSVQVQPSY  
AGGVKLSLSSAEHNALLHSPGSLTPPHKSNVSAMEELVEKVTGKVNIIKKEERPEPEKSSSLAKAASPIAK  
ENKDFPKTEEVSGKPQKKGPEAETGKAKKEGPLDVHTPNGTEPLKAKVTNCGNNGIIMDHSPEPSFINP  
LSALQSIMNTHLGKYSKPVSPSLDPLAMLYKISNSMLDKPVYPATPVKQADAIIDRYYYENSQPIDLTKS  
KNKPLVSSVADSVASPLRESALMDISDMVKNLTGRLTPKSSTPSTVSEKSDADGSSFEELDELSPVHKR  
KGRQSNWNPQHLLILQAQFASLRETTEGKYIMSDLGPQERVHISKFTGLSMTTISHWLANVKYQLRRTG  
GTKFLKNLDTGHPVFFCNDCASQFRTASTYISHLETHLGFSLKDL SKLPLNQIQEQNVSKVLTNKTLP  
LGATEEDLGSTFQCKLCNRTFASKHAVKLHL SKTHGKSPEDHLIYVTELEKQ

TRTRPLEQKLISEEDLAANDILDYKDDDDKV

**Chromatograms:**

[https://cdn.origene.com/chromatograms/mk8028\\_a04.zip](https://cdn.origene.com/chromatograms/mk8028_a04.zip)

**Restriction Sites:**

SgfI-MluI

**Cloning Scheme:**


**ACCN:** NM\_005786

**ORF Size:** 3096 bp

**OTI Disclaimer:** The molecular sequence of this clone aligns with the gene accession number as a point of reference only. However, individual transcript sequences of the same gene can differ through naturally occurring variations (e.g. polymorphisms), each with its own valid existence. This clone is substantially in agreement with the reference, but a complete review of all prevailing variants is recommended prior to use. [More info](#)

**OTI Annotation:** This clone was engineered to express the complete ORF with an expression tag. Expression varies depending on the nature of the gene.

**Components:** The ORF clone is ion-exchange column purified and shipped in a 2D barcoded Matrix tube containing 10ug of transfection-ready, dried plasmid DNA (reconstitute with 100 ul of water).

- Reconstitution Method:**
1. Centrifuge at 5,000xg for 5min.
  2. Carefully open the tube and add 100ul of sterile water to dissolve the DNA.
  3. Close the tube and incubate for 10 minutes at room temperature.
  4. Briefly vortex the tube and then do a quick spin (less than 5000xg) to concentrate the liquid at the bottom.
  5. Store the suspended plasmid at -20°C. The DNA is stable for at least one year from date of shipping when stored at -20°C.

**RefSeq:** [NM\\_005786.6](#)

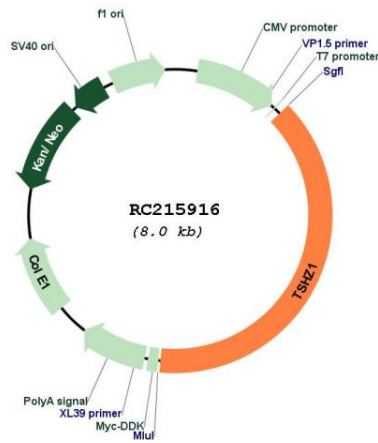
**RefSeq Size:** 4982 bp

**RefSeq ORF:** 3099 bp

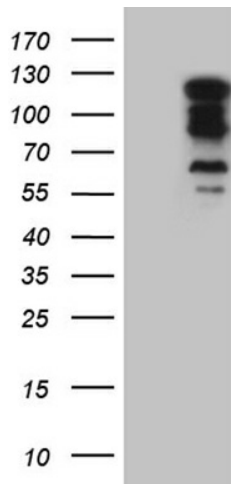
**Locus ID:** 10194

**UniProt ID:** [Q6ZSZ6](#)

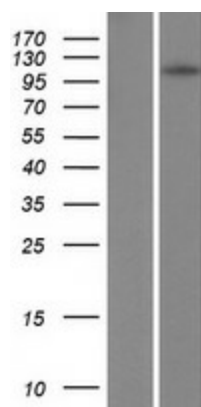
**Cytogenetics:** 18q22.3  
**Domains:** homeobox, zf-C2H2  
**Protein Families:** Transcription Factors  
**MW:** 112.5 kDa  
**Gene Summary:** This gene encodes a colon cancer antigen that was defined by serological analysis of recombinant cDNA expression libraries. The encoded protein is a member of the teashirt C2H2-type zinc-finger protein family and may be involved in transcriptional regulation of developmental processes. Mutations in this gene may be associated with congenital aural atresia syndrome. [provided by RefSeq, Jan 2012]

**Product images:**


Circular map for RC215916



HEK293T cells were transfected with the pCMV6-ENTRY control (Cat# [PS100001], Left lane) or pCMV6-ENTRY TSHZ1 (Cat# RC215916, Right lane) cDNA for 48 hrs and lysed. Equivalent amounts of cell lysates (5 ug per lane) were separated by SDS-PAGE and immunoblotted with anti-TSHZ1 (Cat# [TA809993])(1:2000). Positive lysates [LY417073] (100ug) and [LC417073] (20ug) can be purchased separately from OriGene.



Western blot validation of overexpression lysate (Cat# [LY417073]) using anti-DDK antibody (Cat# [TA50011-100]). Left: Cell lysates from untransfected HEK293T cells; Right: Cell lysates from HEK293T cells transfected with RC215916 using transfection reagent MegaTran 2.0 (Cat# [TT210002]).