

## Product datasheet for **RC215912**

### **GPRIN3 (NM\_198281) Human Tagged ORF Clone**

#### **Product data:**

Product Type:	Expression Plasmids
Product Name:	GPRIN3 (NM_198281) Human Tagged ORF Clone
Tag:	Myc-DDK
Symbol:	GPRIN3
Synonyms:	GRIN3
Mammalian Cell Selection:	Neomycin
Vector:	pCMV6-Entry (PS100001)
E. coli Selection:	Kanamycin (25 ug/mL)



[View online »](#)

ORF Nucleotide  
Sequence:

>RC215912 ORF sequence  
Red=Cloning site Blue=ORF Green=Tags(s)

TTTTGTAATACGACTCACTATAGGGCGGCCGGGAATTCGTGACTGGATCCGGTACCGAGGAGATCTGCC  
GCC**CGGATCGCC**

ATGGGGACTGTACCTGACCTCTGAGATCAGCTAAAACCTCCCTGATTGCAGCTCCGGAAAAGAAGACG  
ATCTAGGAGAGCCACAGGCTGCCTCACCTCGGCATCGACCAGCTCCTGTGTAAGAATGCCAATGGCTT  
TTCAGGTGCCCTGCAGAACAGACCTCAGCCCCAGGGCAGCTGCCGAAGCCCTGATGCAGGTTTGTGAG  
CATGAGACCACCAACCAGATATGTCTTCTCCTGGTGTGTTCAATGAAGTGCAGAAAACCTGCCACAT  
TCAACTCTCCCGCAATCCCAGCTGCCAGGGAGCAGCCAGCCCGCAGCATCAGCCCCGAGTTCTGCAGC  
AGGAAGGGATCTTATACACACACCATTGACAATGCCCGCAATCAGCACACCTGCCAGTCCATCCCAGGT  
GATCAGCCCAATGCCATCACCTCATCCATGCCTGAAGATTCCTGATGAGATCACAGAGAACCTCAAATA  
GAGAGCAACCTGAGAAACCAAGTTGTCTGTGGGAGGCGTCTCAGTAGCAGCAAAGATCAGGTGTCTGT  
TGAGTTTCTTCTCCAGAAACAATCCAGGGAACAGTGCAGACTCCAGTGACAGCAGCCAGGGTGGTCAGT  
CACTCATCTCTCTGTAGGTGGACCTGAAGGGGAAAGGCAGGGAGCCATCTGTGACTCTGAAATGAGGT  
CCTGTAACCTCTAACTAGAGAATCTGGATGTTAGAGAACAAGCAGCCCTCTGTCACTGCCTCGGGCCC  
CCAAGGCACAACCTCTGTGACACCTCAACCAACCCCCCTCACTAGCGAACCTTCGGCATGTCCCCAGGT  
CCAGAGAAGGTGCCGCTGCCAGCACAGCGTCAGATGTCAAGGTTCAAAGAAGCCAGTACGATGACCAACC  
AAGCTGAAAGTGAATCAAGGAAGTCCACAGCAGGGCTTGGCAAGATGCCGAGGTGCAGGCAGTGGCGAG  
TGTCGAGAGCAGATCCGTCTCCACCAGCCCCAGTATCCTCACTGCATTTCTGAAGGAAAGCCGTGCTCT  
GAGCATTTTGAACAAGAGCAGCTGCGTGTCAATTTGCCACAGCAGTGGGAGCCACACACTGGAGCTCTCTG  
ACAGCACGCTAGCCCCCAGGAGCCCAGCCAGTGCCTGGCATCATGCCACAGGTGCACATTCAGGCAGC  
TGCACTGAGTCTACAGCTTTCCAACGGGAAAATAAACTTGCGAGCCTACCAGGTGGGGTCTTAAACCC  
TCATCAATCAATTTGGTCTCCAGTAATGCCAGCATACGTGTAAGAAGATGGGAGGTTAGCAGGAATGA  
CTCCAGCGAGGGAAGAGTCAACTGCTAAAAAGCTCGCAGGTAATAATTCTAGCTCCCTGAAAGCTACCGC  
CATTGACCAGATTTCTATCAGTGCATGCAGTCAAGCTGAAACAAGTTATGGATTGGGGAAAATTTGAAACC  
AGGCCATCTGAGTTTGCAGAGAAAACGACAAAACGGCCACAAAACAGACCCAGATTGCAAATCTGACT  
CTTGTGGCTCTATCAGCAAAGCTGATCATTCTGGGAGCTTGGATCCCCTAATAAAGGAGATGCAAGGGA  
AAAGAAGCCTGCATCTCCTCAGGTAGTAAAAGAAAAGAGTCTACTGGCACTGATACCTCGGATGCCAAA  
ACCCTACTGCTCAATCCTAAATCCCAAGAAAGTGGAGGCACAGAATCAGCTGCTAATCCTACACCCTCCC  
CAATTAGGAAGAACCCAGGAGAGCACCTTAGAAGAAAACAGACAGACCAAGACAGCCACCAGCCTGAGCCT  
GCCATCTGATCCCATGGGTGACTCCAGCCCAGGTTCTGGCAAGAAGACCCCATCTCGCTCCGTCAAAGCC  
AGCCCACGCAGGCCAGCCGCGTCAGCGAGTTCCTCAAGGAGCAAAAAGTTAAATGTGACAGCAGCTGCTG  
CTCAGGTAGGACTCACTCCAGGAGATAAGAAAAAGCAGCTTGGCGCAGACTCCAAGCTCCAGCTGAAACA  
GTCCAAGCGTGTGAGGGACGTCGTGTGGGATGAGCAGGGAATGACCTGGGAAGTGTATGGTGCATCCTTG  
GACGCAGAGTCCCTGGGAATCGCGATCCAGAACCATTTGCAAAGCAAAATCAGGGAACATGAGAAATTA  
TCAAAACTCAAAATAGCCAGACCCGGAGATCCATTTCTCAGATACTTCTTCAAATAAGAAGCTCAGAGG  
AAGGCAGCACAGTGTTCAGTCCATGCTGCAGAACTCCGACGCCCAACTGCTGCGTCCGTCTGCTGCC  
CCGTCTTCTGTGTTAGAT

**ACGCGT**ACGCGGCCGCTCGAGCAGAAACTCATCTCAGAAGAGGATCTGGCAGCAAATGATATCCTGGATT  
ACAAGGATGACGACGATAAGGTTTAA

**Protein Sequence:** >RC215912 protein sequence  
Red=Cloning site Green=Tags(s)

MGTVPDPLRS AKTSLIAASGKEDDLGEPQAASPRHRPALLCKNANGFSGAPAEPDLSPRAAAEALMQVCE  
HETTQPMSSPGVFNEVQKAPATFNSPGNPQLPGSSQPAASAPSSAAGRDLIHTPLTMPANQHTCQSI  
DQPNAITSSMPEDSLMRSQRTSNREQPEKPCPVGGVLSKSDQVSCEFPPETIQGTVQTPVTAARVVS  
HSSSPVGGPEGERQGAICDSEMRCKPLTRESGCSENKQPSVTASGPQGTTSVTPQPTPLTSEPSACPPG  
PEKVPLPAQRQMSRFKEASTMTNQAEEIKEVPSRAWQDAEVQAVASVESRSVSTSPSILTAFLKESRAP  
EHFEQEQLRVI CHSSGSHTLELSDSTLAPQEPSQCPGIMPQVHIQAAAAE STAFQRENKLASLPGGV LKT  
SSINLVSSNAQHTCKEDGRLAGMTPAREESTAKKLAGTNSSSLKATAIDQISISACSQAETS YGLGKFET  
RPSEFAEKT TNHGKTD PDCKLSDSCGSIKADHSGSLDPTNKGDAREKKPASPQVVKEKESTGTD TSDAK  
TLLLNPKSQESGGTESAANPTSPIRKNQESTLEENRQTKTATSLSLPSDPMGDS SPGSGKKTPSRSVKA  
SPRRRSRVSEFLKEQKLNVTAAAQVGLTPGDKKKQLGADSKLQLKQSKRVRDVVWDEQGMTWEVYGASL  
DAESLGI AIQNH LQRQIREHEKLIK TQNSQTRRSISSDTSSNKKL RGRQHSVFQSM LQNFR RPNCCVRPA  
PSSVLD

TRTRPLEQKLI SEEDLAANDILDYKDDDDKV

**Chromatograms:** [https://cdn.origene.com/chromatograms/mk6605\\_b03.zip](https://cdn.origene.com/chromatograms/mk6605_b03.zip)

**Restriction Sites:** Sgfl-MluI



**Reconstitution Method:**

1. Centrifuge at 5,000xg for 5min.
2. Carefully open the tube and add 100ul of sterile water to dissolve the DNA.
3. Close the tube and incubate for 10 minutes at room temperature.
4. Briefly vortex the tube and then do a quick spin (less than 5000xg) to concentrate the liquid at the bottom.
5. Store the suspended plasmid at -20°C. The DNA is stable for at least one year from date of shipping when stored at -20°C.

**RefSeq:** [NM\\_198281.3](#)

**RefSeq Size:** 6352 bp

**RefSeq ORF:** 2331 bp

**Locus ID:** 285513

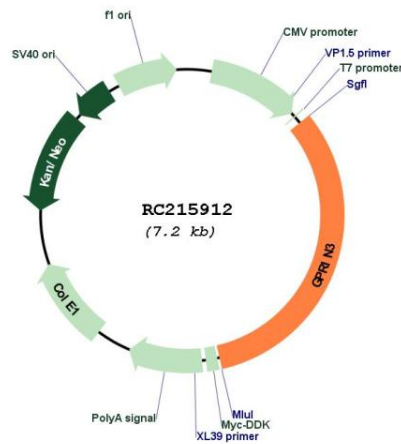
**UniProt ID:** [Q6ZVF9](#)

**Cytogenetics:** 4q22.1

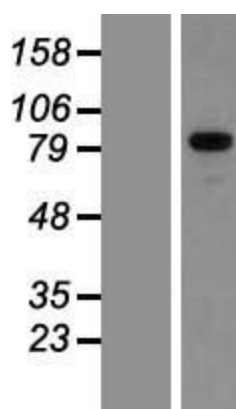
**MW:** 82.4 kDa

**Gene Summary:** May be involved in neurite outgrowth.[UniProtKB/Swiss-Prot Function]

**Product images:**



Circular map for RC215912



Western blot validation of overexpression lysate (Cat# [LY405005]) using anti-DDK antibody (Cat# [TA50011-100]). Left: Cell lysates from untransfected HEK293T cells; Right: Cell lysates from HEK293T cells transfected with RC215912 using transfection reagent MegaTran 2.0 (Cat# [TT210002]).