

## Product datasheet for **RC215908**

### MYZAP (NM\_152451) Human Tagged ORF Clone

#### Product data:

Product Type:	Expression Plasmids
Product Name:	MYZAP (NM_152451) Human Tagged ORF Clone
Tag:	Myc-DDK
Symbol:	MYZAP
Synonyms:	GCOM1; Gup; MYOZAP
Mammalian Cell Selection:	Neomycin
Vector:	pCMV6-Entry (PS100001)
E. coli Selection:	Kanamycin (25 ug/mL)



[View online »](#)

**ORF Nucleotide Sequence:**

>RC215908 representing NM\_152451  
 Red=Cloning site Blue=ORF Green=Tags(s)

TTTTGTAATACGACTCACTATAGGGCGGCCGGGAATTCGTCGACTGGATCCGGTACCGAGGAGATCTGCC  
 GCC**CGCATCGCC**

ATGCTGCGCTCCACGTCCACGGTACCCTGCTCTCGGGCGGCCGCCAGGACGCCCGGGCGCCAGCA  
 GGAGGGCAAATGTTTGCAGACTACGGCTGACCGTACCTCCTGAGAGTCCAGTTCTGAGCAATGTGAAAA  
 GAAGATTGAGAGAAAAGAGCAGCTTCTTACCTGAGCAATGGAGAACCCTACCAGGAACTTCTCAGGGT  
 GTTGTATTGGTGTGGTGCAGATCAGATCAAAATCAGCAGAAAAGAAATGGTGGTGTATGGGTGGTCCA  
 CCAGTCAGCTGAAAGAAGAGATGAACTACATCAAAGATGTGAGAGCCACTTTGGAAAAGGTGAGAAAAGC  
 AATGTATGGAGACTATGATGAGATGAGACAGAAGATTCGACAGCTCACCCAGGAACTATCAGTTTCCCAT  
 GCTCAGCAGGAGTATCTGGAGAATCACATCCAACCCAGTCGTCTGCCCTGGATCGTTTTAATGCCATGA  
 ACTCAGCCTTGGCGTCAGATTCCATTGGCCTGCAGAAAACCTCGTGGATGTGACTTTGGAAAACAGCAA  
 CATTAAAGGATCAAATCAGAAATCTGCAGCAGACGTATGAAGCATCCATGGACAAGCTGAGGGAAAAGCAG  
 AGGCAGTTGGAGGTAGCGCAAGTTGAAAACCAGCTGCTAAAAATGAAGGTGGAATCGTCCCAAGAAGCCA  
 ATGCTGAGGTGATGCGAGAGATGACCAAGAAGCTGTACAGCCAGTATGAGGAGAAGCTGCAGGAAGAACA  
 GAGGAAGCACAGTCTGAGAAGGAGGCTCTTTTGGAAAGAAACCAATAGTTTTCTGAAAGCGATTGAAGAA  
 GCCAATAAAAAGATGCAAGCAGCAGAGATCAGCCTAGAGGAGAAAAGACCAGAGGATCGGGGAGCTGGACA  
 GGCTGATTGAGCGCATGGAAAAGGAACGTCATCAACTGCAACTTCAACTCCTAGAACATGAAACAGAAAT  
 GTCTGGGAGTTAACTGATTCTGACAAGGAAAGGTATCAGCAGTTGGAGGAGGCATCAGCCAGCCTCCGT  
 GAGCGGATCAGACACCTAGATGACATGGTGCATTGCCAGCAGAAGAAAGTCAAGCAGATGGTCGAGGAGA  
 TTGAATCATTAAAGAAAAGTTGCAACAGAAAACAGCTCTTAATACTGCAGCTTTTAGAAAAGATATCTTT  
 CTAGAAGGAGAGAATAATGAACTACAAAGCAGGTTGGACTATTTAACAGAAAACCCAGGCCAAGACCGAA  
 GTGAAAACAGAGAGATAGGAGTGGGCTGTGATCTTCTACCCAGCCAAACAGGCAGGACTCGTGAATTG  
 TGATGCCTTCTAGGAACTACACCCATACACAAGAGTCTGGAGTTAACCATGAAGAAAACCTCTGACT

**ACGCGT**ACGCGGCCGCTCGAGCAGAACTCATCTCAGAAGAGGATCTGGCAGCAAATGATATCCTGGATT  
 ACAAGGATGACGACGATAAGGTTTAA

**Protein Sequence:**

>RC215908 representing NM\_152451  
 Red=Cloning site Green=Tags(s)

MLRSTSTVTLSSGGAARTPGAPSRANVCRLRLTVPPEPVPVEQCEKKIERKEQLLDLNGEPTRKLPQG  
 VVYGVVRRSDQNQQKEMVVYGWSTSQLKEEMNYIKDVRALEKVRKRMYGDDYDEMQRKIRQLTQELSVSH  
 AQQEYLENHIQTQSSALDRFNAMNSALASDSIGLQKTLVDVTLENSNIKDQIRNLQQTYEASMDKLRKQ  
 RQLEVAQVENQLLKMVVESSQEANAEMREMTKKLYSQYEEKLQEEQRKHSAEKEALLEETNSFLKAIIE  
 ANKKMQAAEISLEEKDQRI GELDRILIERMEKERHQLQLLLEHETEMSGELTDSKERYQQLEEASASLR  
 ERIRHLDDMVHCQKKVKQMVVEIESLKKKLQQKQLLILQLEKISFLEGENNELQSRLDYLTETQAKTE  
 VETREIGVGDLLPSQTGRTREIVMPSRNYTPYTRVLELTMKKTLLT

**TR**TRPLEQKLISEEDLAANDILDYKDDDDKV

**Chromatograms:**

[https://cdn.origene.com/chromatograms/mk6158\\_g03.zip](https://cdn.origene.com/chromatograms/mk6158_g03.zip)

**Restriction Sites:**

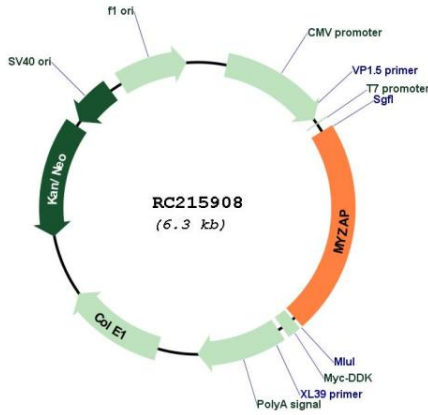
Sgfl-Mlul



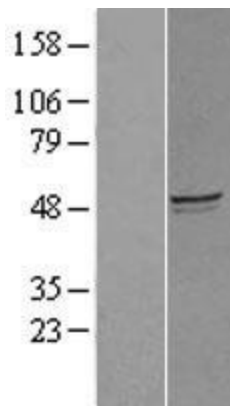
**MW:** 50.7 kDa

**Gene Summary:** This gene encodes a protein that is abundantly expressed in cardiac tissue. The encoded protein localizes to intercalated discs in cardiomyocytes and functions as an activator of Rho-dependent serum-response factor signaling. Alternative splicing results in multiple transcript variants. Readthrough transcription also exists between this gene and the neighboring downstream gene POLR2M (polymerase (RNA) II (DNA directed) polypeptide M) and is represented with GeneID: 145781. [provided by RefSeq, Mar 2014]

**Product images:**



Circular map for RC215908



Western blot validation of overexpression lysate (Cat# [LY403481]) using anti-DDK antibody (Cat# [TA50011-100]). Left: Cell lysates from untransfected HEK293T cells; Right: Cell lysates from HEK293T cells transfected with RC215908 using transfection reagent MegaTran 2.0 (Cat# [TT210002]).