

## Product datasheet for RC215901

### ADAMTS10 (NM\_030957) Human Tagged ORF Clone

#### Product data:

Product Type:	Expression Plasmids
Product Name:	ADAMTS10 (NM_030957) Human Tagged ORF Clone
Tag:	Myc-DDK
Symbol:	ADAMTS10
Synonyms:	ADAM-TS10; ADAMTS-10; WMS; WMS1
Mammalian Cell Selection:	Neomycin
Vector:	pCMV6-Entry (PS100001)
E. coli Selection:	Kanamycin (25 ug/mL)
ORF Nucleotide Sequence:	>RC215901 representing NM_030957 Red=Cloning site Blue=ORF Green=Tags(s)

TTTTGTAATACGACTCACTATAGGGCGGCCGGAATTCGTCGACTGGATCCGGTACCGAGGAGATCTGCC  
GCC**CGATCGCC**

ATGGCTCCCGCTGCCAGATCCTCCGCTGGGCCCTCGCCCTGGGGCTGGGCCTCATGTTTCGAGGTACGC  
ACGCCCTCCGGTCTCAAGATGAGTTCCTGTCCAGTCTGGAGAGCTATGAGATCGCCTTCCCCACCCGCGT  
GGACCACAACGGGGCACTGCTGGCCTTCTCGCCACCTCCTCCCCGAGGCAGCGCCGCGGCACGGGGGCC  
ACAGCCGAGTCCCGCCTTCTACAAAGTGGCCTCGCCACGACCCACTTCTGTGAACCTGACCCGCA  
GCTCCCGTCTACTGGCAGGGCACGTCTCCGTGGAGTACTGGACACGGGAGGGCCTGGCCTGGCAGAGGGC  
GGCCCGGCCCACTGCCTTACGCTGGTCACTGCAGGGCCAGGCCAGCAGCTCCCATGTGGCCATCAGC  
ACCTGTGGAGGCCTGCACGGCCTGATCGTGGCAGACGAGGAAGAGTACCTGATTGAGCCCTGCACGGTG  
GGCCCAAGGGTCTCGGAGCCCGGAGGAAAGTGGACCACATGTGGTGTACAAGCGTTCCTCTCGCTCA  
CCCCACCTGGACACAGCCTGTGGAGTGAAGATGAGAAACCGTGGAAAGGGCGGCCATGGTGGCTGCGG  
ACCTTGAAGCCACCGCCTGCCAGGCCCTGGGGAATGAAACAGAGCGTGGCCAGCCAGGCCTGAAGCGAT  
CGGTACGCCGAGAGCGCTACGTGGAGACCCTGGTGGTGGCTGACAAGATGATGGTGGCCTATCACGGGGC  
CCGGATGTGGAGCAGTATGCTCGCCATCATGAACATTGTTGCCAACTTTCCAGGACTCGAGTCTG  
GGAAGCACCGTTAACATCCTCGTAACTCGCCTCATCCTGCTCACGGAGGACCAGCCCACTGGAGATCA  
CCACCATGCCGGGAAGTCCCTGGACAGCTTCTGTAAGTGGCAGAAATCCATCGTGAACCACAGCCGCCA  
TGGCAATGCCATTCCAGAGAACGGTGTGGCTAACCATGACACAGCAGTGTCTCATCACAGCTATGACATC  
TGCATCTACAAGAACAACCCTGCGGCACACTAGGCCTGGCCCGGTGGCGGAATGTGTGAGCGCGAGA  
GAAGCTGCAGCGTCAATGAGGACATTGGCCTGGCCACAGCGTTCACCATTGCCACGAGATCGGGCACAC  
ATTCGGCATGAACATGACGGCTGGGAAACAGCTGTGGGGCCCGTGGTCAAGACCCAGCCAAGCTCATG  
GCTGCCACATTACCATGAAGACCAACCATTCTGTGGTTCATCTGCAGCCGTACTACATCACCAGCT  
TTCTAGACTCGGGCTGGGGCTCTGCCTGAACAACCGGCCCCAGACAGGACTTTGTGTACCCGACAGT  
GGCACC GGCCAAGCCTACGATGCAGATGAGCAATGCCGCTTTCAGCATGGAGTCAAATCGCGTCAGTGT



[View online »](#)

AAATACGGGGAGGTCTGCAGCGAGCTGTGGTGTCTGAGCAAGAGCAACCGGTGCATCACCAACAGCATCC  
 CCGCCCGCAGGGGACGCTGTGCCAGACGCACACCATCGACAAGGGGTGGTGTCTACAAACGGGTCTGTGT  
 CCCCTTTGGGTCGCGCCAGAGGGTGTGGACGGAGCCTGGGGCCGTGGACTCCTAGGGGCGACTGCAGC  
 CGGACCTGTGGCGGGCGGCTGTCTCTTCTAGCCGTCACTGCGACAGCCCCAGGCCAACCATCGGGGCA  
 AGTACTGTCTGGTGAGAGAAGGCGGCACCGCTCCTGCAACACGGATGACTGTCCCCTGGCTCCAGGA  
 CTTTACAGAGAAGTGCAGTGTCTGAATTTGACAGCATCCCTTTCCGTGGAAATTTACAAGTGGAAAACG  
 TACCGGGAGGGGCGTGAAGGCTGCTCGCTACGTGCCTAGCGGAAGGCTTCAACTTTACACCGGAGA  
 GGGCGGACGCCGTGGTGACGGGACCCCTGCCGTCCAGACAGGTGGACATTTGCGTCACTGGCGAATG  
 CAAGCACGTGGGCTGCGACCGAGTCTGGGCTCCGACCTGCGGGAGGACAAGTGCCGAGTGTGTGGCGGT  
 GACGGCAGTGCCTGCGAGACCATCGAGGGCGTCTTCCAGCCAGCCTCACCTGGGGCCGGTACGAGGATG  
 TCGTCTGGATTCCCAAAGGCTCCGTCCACATCTTCCATCCAGGATCTGAACCTCTCTCAGTCACTTGGC  
 CCTGAAGGGAGACCAGGAGTCCCTGCTGCTGGAGGGGCTGCCCGGACCCCCAGCCCCACCGTCTGCT  
 CTAGCTGGGACCACCTTTCAACTGCGACAGGGCCAGACCAGGTCAGAGCCTCGAAGCCCTGGGACCGA  
 TTAATGCATCTCTCATCGTATGGTGTGGCCCGACCGAGCTGCCTGCCCTCCGCTACCGCTTCAATGC  
 CCCCATCGCCGCTGACTCGCTGCCCCCTACTCCTGGCACTATGCGCCCTGGACCAAGTGTCTGGCCAG  
 TGTGCAGGCGGTAGCCAGGTGCAGGCGGTGGAGTGCCCGCAACCAGCTGGACAGCTCCGCGGTGCGCCCC  
 ACTACTGCAGTGCACAGCAAGCTGCCAAAAGGCGAGCGCCCTGCAACACGGAGCCTTCCCTCCAGA  
 CTGGGTTGTAGGGAAGTGGTCTGCTGCGAGCCGAGCTGCGATGCAGGCGTGCAGCAGCCGCTCGGTCTGT  
 TGCCAGCGCCCGTCTCTGCCCGGAGGAGAAGGCGGTGGACGACAGCGCATGCCCGCAGCCGCGCCAC  
 CTGACTGGAGGCTGCCACGGCCCACTTCCCTCCGGAGTGGGCGCCCTCGACTGGTCTGAGTGCAC  
 CCCCAGCTGCGGGCCGGGCTCCGCCACCGCGTGGTCTTTGCAAGAGCGCAGACCACTGCGCCACGCTG  
 CCCCAGCGCAGTGTCAACCGCCGCAAGCCACCGCCACCATGCGCTGCAACTGCGCCGCTGCCCC  
 CGGCCCGTGGTGGTGGGAGTGGGCTGCTGCTGACAGTGCAGGCGTGGGCGGCGGCGAGCCAGCCTC  
 GGTGCGTGCACAGCCACAGGGCCAGGCGTGCACAGTGCAGGAGGCCCTGCGGCGCCGCCACCGA  
 CAGCAGTGTGAGGCCAAGTGCAGACGCCAACCCCGGGACGGCCCTGAAGAGTGAAGGATGTGAACA  
 AGGTGCGCTACTGCCCTGGTCTCAAATTTAGTCTGCGAGCCGAGCCTACTCCGCCAGATGTGCTG  
 CAAAACCTGCCAGGGCCAC

ACGCGTACGCGGCCGCTCGAGCAGAACTCATCTCAGAAGAGGATCTGGCAGCAATGATATCCTGGATT  
 ACAAGGATGACGACGATAAGGTTTAA

**Protein Sequence:**

>RC215901 representing NM\_030957  
 Red=Cloning site Green=Tags(s)

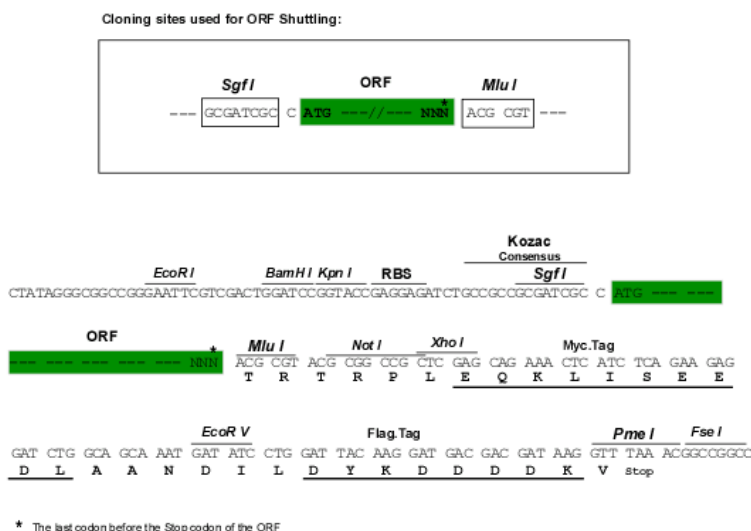
MAPACQILRWALALGLMFEVTHAFRSQDEFLLSLESYEIAFPTRVDHNGALLAFSPPPRRRQRRTGA  
 TAESRLFYKVASPSTHLLNLTRSSRLLAGHVSVEYWTREGLAWQRAARPHCLYAGHLQGGQASSSHVAIS  
 TCGGLHGLIWADEEYLYIEPLHGGPKGSRSPSESGPHVVYKRSSLRPHLDACGVRDEKPKGRPWWR  
 TLKPPPARPLGNETERGQPLKRSVSRERYVETLVVADKMMVAYHGRRDVEQYVLAIMNIVAKLFQDSSL  
 GSTVNLVTRLILLTQPTLEITHHAGKSLDSFCKWQKSIWNHSGHGNAIPENGVANHDTAVLITRYDI  
 CIYKNKPCGTLGLAPVGMGERERSCSVNEIDGLATAFTIAHEIGHTFGMNHGVDGNSCGARGQDPAKLM  
 AAHITMKNPFWSSCSRDIYSFLDSSLGLCLNNRPPRQDFVYPTVAPGQAYDADEQCRFHGKSRQC  
 KYGEVCSSELWCLSKSNRITNSIPAAEGLCQHTIDKGCWYKRVCPFGSRPEGVGAWGPWPWGDCS  
 RTCGGVSSSRHCDSPRPTIGGKYCLGERRRHRSCNTDDCPPGSQDFREVCSEFDSIPFRGKFKWKT  
 YRGGGKACSLTCLAEGFNFYTERAAAVDGTPCRPTVDICVSGECKHVGCDRVLGSDLREDKCRVCGG  
 DGSACETIEGVFSPASPGAGYEDVWVWIPKGSVHIFIQDLNLSLHLALKGDQESLLEGLPGTPQPHRLP  
 LAGTTFQLRQPDQVQSLALGPINASLIVMLARTELPALRYRFNAPIARDSLPPYSWHYAPWTKCSAQ  
 CAGGSQVQAVECRNQLDSSAVAPHYCSAHSKLPKRQRACNTEPCPPDWVWGNWSLCSRSCDAGVRSRSV  
 CQRRVSAAEKALDDSAQPQPRPVLEACHGPTCPPEWAALDWSECTPSCGPGLRHRVVLCKSADHCATL  
 PPAHCSAAKPPATMRCNLRPPARWVAGEWGECSAQCGVQQRQSVRCTSHTGQASHECTEALRPPTT  
 QQCEAKCDSPTPGDGPEECKDVNKVAYCPLVLKQFCSRAYFRQMCKTCCQGH

TRTRPLEQKLISEEDLAANDILDYKDDDDKV

**Chromatograms:** [https://cdn.origene.com/chromatograms/mk6219\\_h06.zip](https://cdn.origene.com/chromatograms/mk6219_h06.zip)

**Restriction Sites:** SgfI-MluI

**Cloning Scheme:**



**ACCN:** NM\_030957

**ORF Size:** 3309 bp

**OTI Disclaimer:** The molecular sequence of this clone aligns with the gene accession number as a point of reference only. However, individual transcript sequences of the same gene can differ through naturally occurring variations (e.g. polymorphisms), each with its own valid existence. This clone is substantially in agreement with the reference, but a complete review of all prevailing variants is recommended prior to use. [More info](#)

**OTI Annotation:** This clone was engineered to express the complete ORF with an expression tag. Expression varies depending on the nature of the gene.

**Components:** The ORF clone is ion-exchange column purified and shipped in a 2D barcoded Matrix tube containing 10ug of transfection-ready, dried plasmid DNA (reconstitute with 100 ul of water).

**Reconstitution Method:**

1. Centrifuge at 5,000xg for 5min.
2. Carefully open the tube and add 100ul of sterile water to dissolve the DNA.
3. Close the tube and incubate for 10 minutes at room temperature.
4. Briefly vortex the tube and then do a quick spin (less than 5000xg) to concentrate the liquid at the bottom.
5. Store the suspended plasmid at -20°C. The DNA is stable for at least one year from date of shipping when stored at -20°C.

**RefSeq:** [NM\\_030957.4](#)

**RefSeq Size:** 4237 bp

**RefSeq ORF:** 3312 bp

**Locus ID:** 81794

UniProt ID: [Q9H324](#)

Cytogenetics: 19p13.2

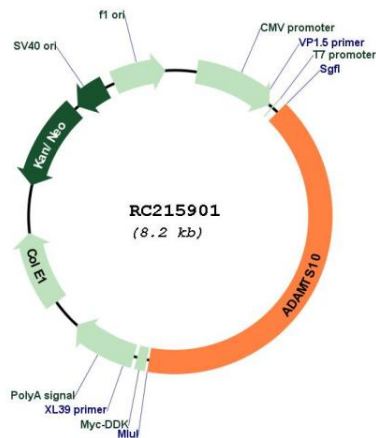
Domains: tsp\_1, Reprolysin, Pep\_M12B\_propep

Protein Families: Druggable Genome, Secreted Protein

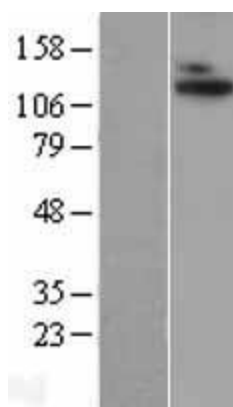
MW: 120.7 kDa

**Gene Summary:** This gene belongs to the ADAMTS (a disintegrin and metalloproteinase domain with thrombospondin type-1 motifs) family of zinc-dependent proteases. ADAMTS proteases are complex secreted enzymes containing a prometalloprotease domain of the reprolysin type attached to an ancillary domain with a highly conserved structure that includes at least one thrombospondin type 1 repeat. They have been demonstrated to have important roles in connective tissue organization, coagulation, inflammation, arthritis, angiogenesis and cell migration. The product of this gene plays a major role in growth and in skin, lens, and heart development. It is also a candidate gene for autosomal recessive Weill-Marchesani syndrome. [provided by RefSeq, Jul 2008]

**Product images:**



Circular map for RC215901



Western blot validation of overexpression lysate (Cat# [LY410621]) using anti-DDK antibody (Cat# [TA50011-100]). Left: Cell lysates from untransfected HEK293T cells; Right: Cell lysates from HEK293T cells transfected with RC215901 using transfection reagent MegaTran 2.0 (Cat# [TT210002]).