

## Product datasheet for **RC215899**

### **CARD9 (NM\_052813) Human Tagged ORF Clone**

#### **Product data:**

Product Type:	Expression Plasmids
Product Name:	CARD9 (NM_052813) Human Tagged ORF Clone
Tag:	Myc-DDK
Symbol:	CARD9
Synonyms:	CANDF2; hCARD9
Mammalian Cell Selection:	Neomycin
Vector:	pCMV6-Entry (PS100001)
E. coli Selection:	Kanamycin (25 ug/mL)



[View online »](#)

**ORF Nucleotide Sequence:**

>RC215899 representing NM\_052813  
 Red=Cloning site Blue=ORF Green=Tags(s)

TTTTGTAATACGACTCACTATAGGGCGGCCGGAATTCGTCGACTGGATCCGGTACCGAGGAGATCTGCC  
 GCC**CGGATCGCC**

ATGTCGGACTACGAGAACGATGACGAGTCTGGAACGCTCGGAGGCTCCGGGTGACGCTCACCTCGG  
 TCATCGACCCCTCACGCATCACACCTTACTGCGGCAGTGAAGGTCCTGAACCCCTGATGATGAGGAGCA  
 GGTGCTCAGCGACCCCAACCTGGTCATCCGCAAACGAAAGTGGGTGTGCTCCTGGACATCCTGCAGCGG  
 ACCGGCCACAAGGGCTACGTGGCCTTCTCGAGAGCCTGGAGCTCTACTACCCGAGCTGTACAAGAAGG  
 TCACAGGCAAGGAGCCGGCCCGCTTCTCCATGATCATCGACGCGTCCGGGGAGTCAGGCCTGACTCA  
 GCTGCTGATGACTGAGGTCATGAAGCTGCAGAAGAAGGTGCAGGACCTGACCCGCTGCTGAGCTCCAAA  
 GATGACTTCATCAAGGAGCTGCGGGTGAAGGACAGCCTGCTGCGCAAGCACCAGGAGCGTGTGCAGAGGC  
 TCAAGGAGGAGTGCAGGCGCCGAGCCGCGAGCTCAAGCGCTGCAAGGAGGAGAAGTACGACCTGGCCAT  
 GCGCCTGGCGCACCAGAGTGAGGAGAAGGGCGCCGCGCTCATGCGGAACCGTGACCTGCAGCTGGAGATT  
 GACCAGCTCAAGCACAGCCTCATGAAGGCCGAGGACGACTGCAAGGTGGAGCGCAAGCACAGCTGAAGC  
 TCAGGCACGCCATGGAGCAGCGCCAGCCAGGAGCTGCTGTGGGAGCTGCAGCAGGAGAAGGCCCTGCT  
 CCAGGCCCGGGTGCAGGAGCTGGAGGCCTCCGTCCAGGAGGGGAAGCTGGACAGGAGCAGCCCTACATC  
 CAGGACTGGAGGAGGACTGGCGCAGGCGCTGCGGGACCACCAGGAGCAGGCCAACACCATCTTCTCCC  
 TGCGCAAGGACCTCCGCCAGGGCGAGGCCGACGCTCCGGTGCATGGAGGAGAAGGAGATGTTTCGAGCT  
 GCAGTGCCTGGCACTACGTAAGGACTCCAAGATGTACAAGGACCGCATCGAGGCCATCCTGCTGCAGATG  
 GAGGAGTGCCTATTGAGCGGGACCAGGCCATAGCCACGCGGGAGGAGCTGCACGCACAGCAGCCCGGG  
 GCCTGCAGGAGAAGGACGCGCTGCGCAAGCAGGTGCGGGAGCTGGGCGAGAAGGGCGGATGAGCTGCAGT  
 GCAGGTGTTCCAGTGTGAGGCGCAGCTACTGGCGTGGAGGGCAGGCTCAGGCGGCAGCAGCTGGAGACG  
 CTGCTCTGAGCTCCGACCTGGAAGATGGCTCACCCAGGAGGTCCAGGAGCTCTACTCCCCAGGACC  
 TGGAGGACACCCAGCTCTCAGACAAAGGCTGCCTTGCCGGCGGGGGAGCCGAAACAGCCCTTTCAGC  
 TCTGCACCAGGAGCAGGTTTTGCGGAACCCCATGACGCAGGCCTGAGCAGCGGGGAGCCGCCGAGAAG  
 GAGCGGCGGCCTCAAAGAGAGTTTTGAGAAGTACCGCAGGAAGCGGCCCTCAGGAAGATGCAGAAAG  
 GATGGCGGCAGGGGGAGGAGGACCGGGAGAACCACCGGCAGCGACAACACCGACTGAGGGCTCC

**ACGGGCCGCTCGAGCAGAACTCATCTCAGAAGAGGATCTGGCAGCAAATGATATCCTGGA**  
**TTACAAGGATGACGACGATAAGGTTAA**

**Protein Sequence:**

>RC215899 representing NM\_052813  
 Red=Cloning site Green=Tags(s)

MSDYENDDECWNVLEGRVTLTSSVIDPSRITPYLRQCKVLNPDDEEQVLSDPNLVIRKRKVGVLDDILQR  
 TGHKGYVAFLESELYYPQLYKVTGKEPARVFSMIIDASGESGLTQLLMTEVMKLQKKVQDLTALLSSK  
 DDFIKELRVKDSLLRKHQERVQRLKEECEAGSRELKRCKEENYDLAMRLAHQSEEKGAALMRNRDLQLEI  
 DQLKHSMLKAEDDCKVERKHTLKL RHAMEQRPSQELLWELQEQKALLQARVQELEASVQEGKLDRSSPYI  
 QVLEEDWRQALRDHQEQANTIFSLRKDLRQGEARRLRCEEMEFELQCLALRKDSKMYKDRIEAILLQM  
 EEVAIERDQAIATREELHAQHARGLQEKDALRKQVRELGEKADELQLQVFQCEAQLLAVEGRLRRQLET  
 LVLSSDLEDGSPRRSQELSLPQDLEDTQLSDKGCLAGGGSPKQPF AALHQEQVLRNPHDAGLSSGEPPEK  
 ERRRLKESFENYRRKRALRKMQKQWRQGEEDRENTTGSNDTDEGS

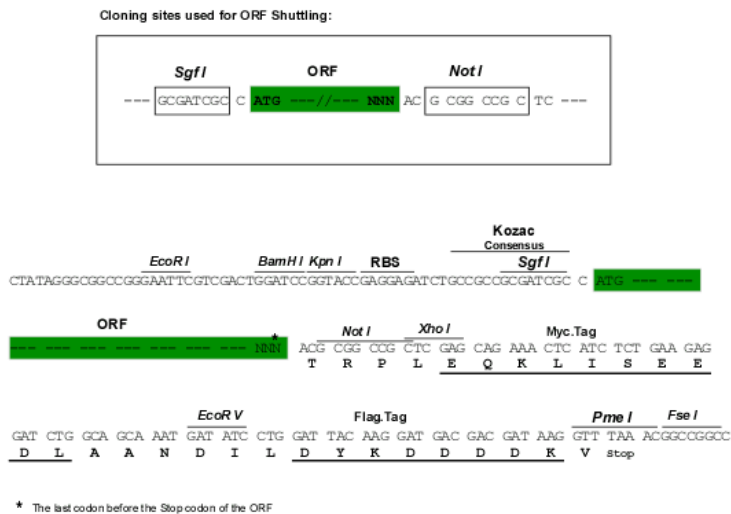
**TRRLEQKLI SEEDLAANDILDYKDDDDKV**

**Chromatograms:**

[https://cdn.origene.com/chromatograms/mk6274\\_d04.zip](https://cdn.origene.com/chromatograms/mk6274_d04.zip)

**Restriction Sites:**

Sgfl-NotI

**Cloning Scheme:**


**ACCN:** NM\_052813

**ORF Size:** 1608 bp

**OTI Disclaimer:** The molecular sequence of this clone aligns with the gene accession number as a point of reference only. However, individual transcript sequences of the same gene can differ through naturally occurring variations (e.g. polymorphisms), each with its own valid existence. This clone is substantially in agreement with the reference, but a complete review of all prevailing variants is recommended prior to use. [More info](#)

**OTI Annotation:** This clone was engineered to express the complete ORF with an expression tag. Expression varies depending on the nature of the gene.

**Components:** The ORF clone is ion-exchange column purified and shipped in a 2D barcoded Matrix tube containing 10ug of transfection-ready, dried plasmid DNA (reconstitute with 100 ul of water).

**Reconstitution Method:**

1. Centrifuge at 5,000xg for 5min.
2. Carefully open the tube and add 100ul of sterile water to dissolve the DNA.
3. Close the tube and incubate for 10 minutes at room temperature.
4. Briefly vortex the tube and then do a quick spin (less than 5000xg) to concentrate the liquid at the bottom.
5. Store the suspended plasmid at -20°C. The DNA is stable for at least one year from date of shipping when stored at -20°C.

**Note:** Plasmids are not sterile. For experiments where strict sterility is required, filtration with 0.22um filter is required.

**RefSeq:** [NM\\_052813.5](#)

**RefSeq Size:** 2136 bp

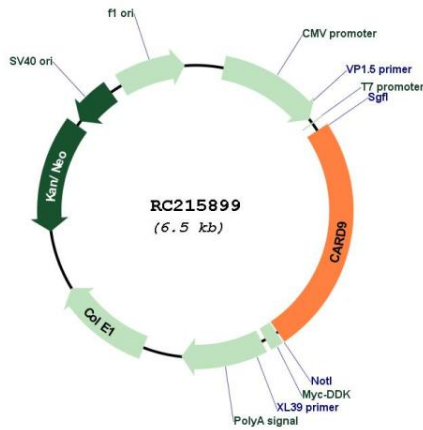
**RefSeq ORF:** 1611 bp

**Locus ID:** 64170

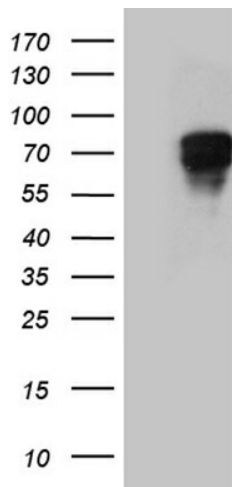
**UniProt ID:** [Q9H257](#)  
**Cytogenetics:** 9q34.3  
**Protein Families:** Druggable Genome  
**Protein Pathways:** NOD-like receptor signaling pathway  
**MW:** 62.1 kDa

**Gene Summary:** The protein encoded by this gene is a member of the CARD protein family, which is defined by the presence of a characteristic caspase-associated recruitment domain (CARD). CARD is a protein interaction domain known to participate in activation or suppression of CARD containing members of the caspase family, and thus plays an important regulatory role in cell apoptosis. This protein was identified by its selective association with the CARD domain of BCL10, a positive regulator of apoptosis and NF-kappaB activation, and is thought to function as a molecular scaffold for the assembly of a BCL10 signaling complex that activates NF-kappaB. Several alternatively spliced transcript variants have been observed, but their full-length nature is not clearly defined. [provided by RefSeq, Jul 2008]

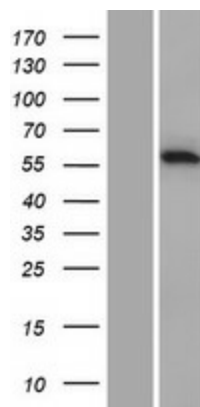
**Product images:**



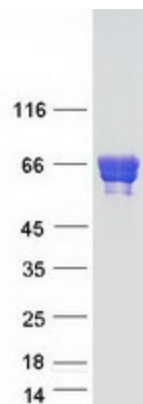
Circular map for RC215899



HEK293T cells were transfected with the pCMV6-ENTRY control (Cat# [PS100001], Left lane) or pCMV6-ENTRY CARD9 (Cat# RC215899, Right lane) cDNA for 48 hrs and lysed. Equivalent amounts of cell lysates (5 ug per lane) were separated by SDS-PAGE and immunoblotted with anti-CARD9(Cat# [TA811909]). Positive lysates [LY409473] (100ug) and [LC409473] (20ug) can be purchased separately from OriGene.



Western blot validation of overexpression lysate (Cat# [LY409473]) using anti-DDK antibody (Cat# [TA50011-100]). Left: Cell lysates from untransfected HEK293T cells; Right: Cell lysates from HEK293T cells transfected with RC215899 using transfection reagent MegaTran 2.0 (Cat# [TT210002]).



Coomassie blue staining of purified CARD9 protein (Cat# [TP315899]). The protein was produced from HEK293T cells transfected with CARD9 cDNA clone (Cat# RC215899) using MegaTran 2.0 (Cat# [TT210002]).