

Product datasheet for **RC215895**

Glyt1 (SLC6A9) (NM_006934) Human Tagged ORF Clone

Product data:

Product Type:	Expression Plasmids
Product Name:	Glyt1 (SLC6A9) (NM_006934) Human Tagged ORF Clone
Tag:	Myc-DDK
Symbol:	Glyt1
Synonyms:	GCENSG; GLYT1
Mammalian Cell Selection:	Neomycin
Vector:	pCMV6-Entry (PS100001)
E. coli Selection:	Kanamycin (25 ug/mL)



[View online »](#)

ORF Nucleotide
Sequence:

>RC215895 representing NM_006934
Red=Cloning site Blue=ORF Green=Tags(s)

CTATAGGGCGGCCGGGAATTCGTCGACTGGATCCGGTACCGAGGAGATCTGCCGCCGCGATCGCCGGCGC
GCC

ATGAGCGGCGGAGACACGCGGGCTGCGATCGCTCGCCCCAGGATGGCCGGGCTCATGGACCTGTGGCCC
CCTCTTCCCAGAACAGAAATGGTGTGTGCCAGCGAGGCCACCAAGAGGGACCAGAACCTCAAACGGGG
CAACTGGGGCAACCAGATCGAGTTTGTACTGACGAGCGTGGGCTATGCCGTGGGCCTGGGCAATGTCTGG
CGTTCCCATACCTCTGTATCGCAACGGGGGAGGCGCCTTCATGTTCCCTACTTCATCATGCTCATCT
TCTGCGGGATCCCCCTCTTTCATGGAGCTCTCCTTCGGCCAGTTTGAAGCCAGGGGTGCCTGGGGGT
CTGGAGGATCAGCCCCATGTTCAAAGGAGTGGGCTATGGTATGATGGTGGTGTCCACCTACATCGGCATC
TACTACAAATGTGGTCATCTGCATCGCCTTCTACTACTTCTTCGTCATGACGCACGTGCTGCCCTGGG
CCTACTGCAATAACCCCTGGAACACGCATGACTGCGCCGGTGTACTGGACGCCTCAACCTACCAATGG
CTCTCGGCCAGCCGCTTGGCCAGCAACCTCTCCACCTGCTCAACCACAGCCTCCAGAGGACCAGCCCC
AGCGAGGAGTACTGGAGGCTGTACGTGCTGAAGCTGTGAGATGACATTGGGAACTTTGGGGAGGTGCGGC
TGCCCCCTCCTTGCTGCCTCGGTGTCTCCTGGTTGGTCTGCTTCCCTCGCCTCATCCGAGGGGTCAAGTC
TTCAGGAAAAGTGGTGTACTTCACGGCCACGTTCCCTACGTGGTGTGACCATTTCTGTTTGC CGGA
GTGACCTGGAGGGAGCCTTTGACGGCATCATGTACTACCTAACCCCGCAGTGGGACAAGATCCTGGAGG
CCAAGGTGTGGGGTGTGCTGCCTCCAGATCTTACTACTGGGCTGCGCGTGGGGAGGCCTCATCAC
CATGGCTTCTACAACAAGTCCACAATAACTGTTACCGGGACAGTGTATCATCAGCATACCAACTGT
GCCACCAGCGTCTATGCTGGCTTCGTTCATCTTCCATCCTCGGCTTCATGGCCAATCACCTGGGCGTGG
ATGTGTCCTCGGTGGCAGACCACGGCCCTGGCCTGGCCTTGTGGCTTACCCCGAGGCCCTCACACTACT
TCCCATCTCCCCGCTGTGGTCTCTGCTCTTCTTTCATGCTTATCCTGCTGGGGCTGGGACTCAGTTC
TGCTCCTGGAGACGCTGGTACAGCCATTGTGGATGAGGTGGGAATGAGTGGATCCTGCAGAAAAGA
CCTATGTGACCTTGGGCGTGGCTGTGGCTGGCTTCTGCTGGGCATCCCCCTCACCAGCCAGGCAGGCAT
CTATTGGCTGCTGCTGATGGACAACTATGCGGCCAGCTTCTCCTTGGTGGTTCATCTCCTGCATCATGTGT
GTGGCCATCATGTACATCTACGGGCACCGGAACTACTTCCAGGACATCCAGATGATGCTGGGATTCCCAC
CACCCCTCTTCTTTCAGATCTGCTGGCGCTTCGTCTCTCCGCCATCATCTTCTTATTCTAGTTTTAC
TGTGATCCAGTACCAGCCGATCACCTACAACCACTACCAGTACCCAGGCTGGGCCGTGGCCATTGGCTTC
TCATGGCTCTGTCTCGTCTCTGCATCCCCCTCTACGCCATGTTCCGGCTCTGCCGCACAGACGGGG
ACACCCTCCTCCAGCGTTTGA AAAATGCCACAAAGCCAAGCAGAGACTGGGGCCCTGCCCTCCTGGAGCA
CCGGACAGGGCGCTACGCCCCCACCATAGCCCCCTCTCCTGAGGACGGCTTCGAGGTCCAGCCACTGCAC
CCGGACAAGGCGCAGATCCCCATTGTGGGCAGTAATGGCTCCAGCCGCTCCAGGACTCCCGGATA

ACGCGTACGCGGCCGCTCGAGCAGAACTCATCTCAGAAGAGGATCTGGCAGCAATGATATCCTGGATT
ACAAGGATGACGACGATAAGGTTTAA

Protein Sequence: >RC215895 representing NM_006934
Red=Cloning site Green=Tags(s)

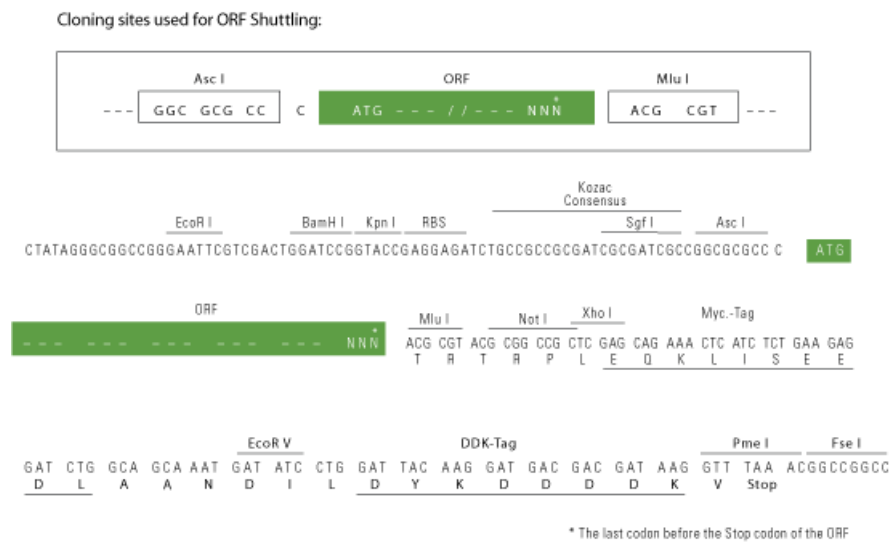
```
MSGGDTRAAIARPRMAAAHGVPVAPSSPEQNGAVPSEATKRDQNLKRGNWGNQIEFVLTSVGAVGLGNVW
RFPYLCYRNGGGAFMFPYFIMLIFCGIPLFFMELSFQGQFASQGCLGVWRI SPMFKGVGYGMMVSTYIGI
YYNVVICIAFYFFSSMTHVLPWAYCNPWNTHDCAGVLDASNL TNGSRPAALPSNL SHLLNHSLQRTSP
SEEYWRLYVLKLSDDIGNFGEVRLPLLGLGCLVSWLVVFLCLIRGVKSSGKVVYFTATFPYVVL TILFVRG
VTLEGAFDGMYYLTPQWDKILEAKVWGDAAASQIFYSLGCAWGLITMASYNKFHNNCYRDSVIIISITNC
ATSUYAGFVIF SILGFMANHLGVDVSRVADHGPGLAFVAYPEAL TLLPISPLWSLLFFFMLILLGLGTQF
CLETETVTAIVDEVGNEWILQKKTYYVTLGVAVAGFLLGIPLTSQAGIYWLLMDNYAASFSLVVISCIMC
VAIMYIYGHRNYFQDIQMMLGFPPPLFFQICWRFVSPAIIFFILVFTVIQYQPITYNHQYQPGWAVAIGF
LMALSSVLCIPLYAMFRLCRTDGD TLLQRLKNATKPSRDWGPALLEHRTGRYAPT IAPSPEDGFEVQPLH
PDKAQIPIVGSNGSSRLQDSRI
```

TRTRPLEQKLI SEEDLAANDILDYKDDDDKV

Chromatograms: https://cdn.origene.com/chromatograms/mg3373_d01.zip

Restriction Sites: AscI-MluI

Cloning Scheme:



ACCN: NM_006934

ORF Size: 1956 bp

OTI Disclaimer: The molecular sequence of this clone aligns with the gene accession number as a point of reference only. However, individual transcript sequences of the same gene can differ through naturally occurring variations (e.g. polymorphisms), each with its own valid existence. This clone is substantially in agreement with the reference, but a complete review of all prevailing variants is recommended prior to use. [More info](#)

OTI Annotation: This clone was engineered to express the complete ORF with an expression tag. Expression varies depending on the nature of the gene.

Components: The ORF clone is ion-exchange column purified and shipped in a 2D barcoded Matrix tube containing 10ug of transfection-ready, dried plasmid DNA (reconstitute with 100 ul of water).

Reconstitution Method:

1. Centrifuge at 5,000xg for 5min.
2. Carefully open the tube and add 100ul of sterile water to dissolve the DNA.
3. Close the tube and incubate for 10 minutes at room temperature.
4. Briefly vortex the tube and then do a quick spin (less than 5000xg) to concentrate the liquid at the bottom.
5. Store the suspended plasmid at -20°C. The DNA is stable for at least one year from date of shipping when stored at -20°C.

RefSeq: [NM_006934.4](#)

RefSeq Size: 3213 bp

RefSeq ORF: 1959 bp

Locus ID: 6536

UniProt ID: [P48067](#)

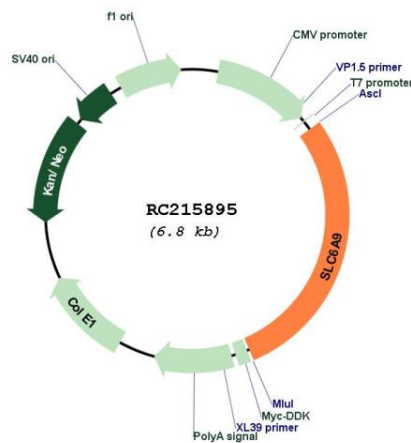
Cytogenetics: 1p34.1

Protein Families: Druggable Genome, Transmembrane

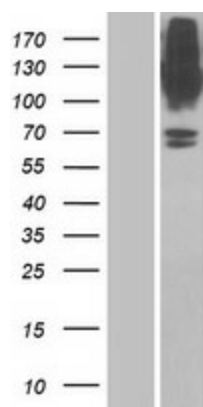
MW: 72.3 kDa

Gene Summary: The amino acid glycine acts as an inhibitory neurotransmitter in the central nervous system. The protein encoded by this gene is one of two transporters that stop glycine signaling by removing it from the synaptic cleft. [provided by RefSeq, Jun 2016]

Product images:



Circular map for RC215895



Western blot validation of overexpression lysate (Cat# [LY416313]) using anti-DDK antibody (Cat# [TA50011-100]). Left: Cell lysates from untransfected HEK293T cells; Right: Cell lysates from HEK293T cells transfected with RC215895 using transfection reagent MegaTran 2.0 (Cat# [TT210002]).