

Product datasheet for **RC215894**

SP140 (NM_001005176) Human Tagged ORF Clone

Product data:

Product Type: Expression Plasmids
Product Name: SP140 (NM_001005176) Human Tagged ORF Clone
Tag: Myc-DDK
Symbol: SP140
Synonyms: LYSP100; LYSP100-A; LYSP100-B
Mammalian Cell Selection: Neomycin
Vector: pCMV6-Entry (PS100001)
E. coli Selection: Kanamycin (25 ug/mL)
ORF Nucleotide Sequence: >RC215894 representing NM_001005176
Red=Cloning site Blue=ORF Green=Tags(s)

TTTTGTAATACGACTCACTATAGGGCGCCGGGAATTCGTCGACTGGATCCGGTACCGAGGAGATCTGCC
GCC**CGATCGCC**

ATGGCCAGCAGGGCCAGCAGGGGCAGATGGCAAGTGGAGACAGCAATCTCAACTTCAGGATGGTCGCAG
AGATCCAGAACGTAGAGGGTCAGAACCTGCAGGAGCAGGTTTGCCTGAGCCATTTTCAGGTTCTTCAG
AGAAAACAAGGTGGAGATTGCAAGTGAATAACAAGGCCATTTCCCTTATGGGCTCCGAGACCGC
TCCTTCATCTCCGAGCAGATGTATGAACATTTCAAGAAGCTTTAGAACTGGTCCCAGTGACAAGAG
TGATGTATTGTACTCAGTGAAGTGGAGAAGACATTTGGCTGGTCACATCTGGAAGCATTGTTCCAGCAG
GATTAACCTGATGGCCTATCCTGATTTAAACGAGATTTACAGAAGCTTCCAGAATGAAAATTTATCATCC
AGTGACAGTCTGTGCAACTGTTTCTCAAACAAGACTGGAGAAGTCACGAAGAGAGCCTAGCACATA
CTGGTACACTGAGGAGGAGCTGCATG

ACGCGTACGCGGCCGCTCGAGCAGAACTCATCTCAGAAGAGGATCTGGCAGCAATGATATCCTGGATT
ACAAGGATGACGACGATAAGGTTTAA

Protein Sequence: >RC215894 representing NM_001005176
Red=Cloning site Green=Tags(s)

MAQQGQQGQMASGDSNLNFRMVAEIQNVEGQNLQEVCPEPIFRFFRENKVEIASAITRPFPLMGLRDR
SFISEQMYEHFQEAFRNLVPVTRVMYCVLSEKTFGWSHLEALFSRINLMAYPDLNEIYRSFQENLSS
SAVLCQLVSPNKDWRSHESLAHTGLRRSCM

TRTRPLEQKLISEEDLAANDILDYKDDDDKV

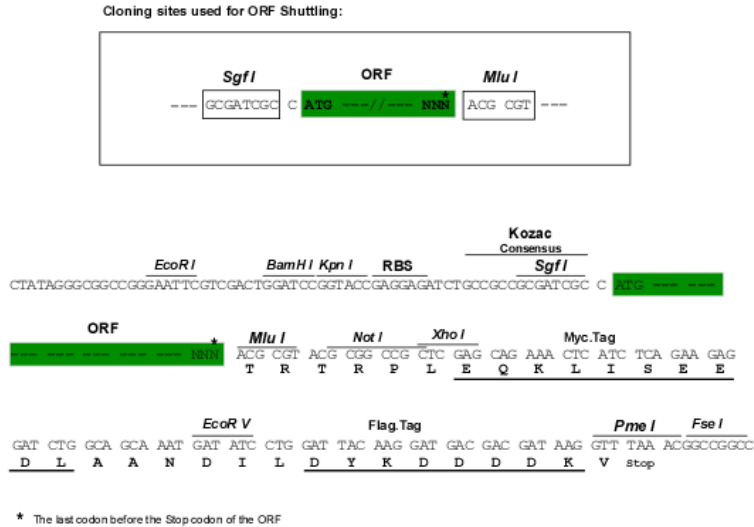
Chromatograms: https://cdn.origene.com/chromatograms/mk6808_d01.zip



[View online »](#)

Restriction Sites: SgfI-MluI

Cloning Scheme:



ACCN: NM_001005176

ORF Size: 516 bp

OTI Disclaimer: The molecular sequence of this clone aligns with the gene accession number as a point of reference only. However, individual transcript sequences of the same gene can differ through naturally occurring variations (e.g. polymorphisms), each with its own valid existence. This clone is substantially in agreement with the reference, but a complete review of all prevailing variants is recommended prior to use. [More info](#)

OTI Annotation: This clone was engineered to express the complete ORF with an expression tag. Expression varies depending on the nature of the gene.

Components: The ORF clone is ion-exchange column purified and shipped in a 2D barcoded Matrix tube containing 10ug of transfection-ready, dried plasmid DNA (reconstitute with 100 ul of water).

Reconstitution Method:

1. Centrifuge at 5,000xg for 5min.
2. Carefully open the tube and add 100ul of sterile water to dissolve the DNA.
3. Close the tube and incubate for 10 minutes at room temperature.
4. Briefly vortex the tube and then do a quick spin (less than 5000xg) to concentrate the liquid at the bottom.
5. Store the suspended plasmid at -20°C. The DNA is stable for at least one year from date of shipping when stored at -20°C.

RefSeq: [NM_001005176.3](#)

RefSeq Size: 853 bp

RefSeq ORF: 519 bp

Locus ID: 11262

UniProt ID: [Q13342](#)

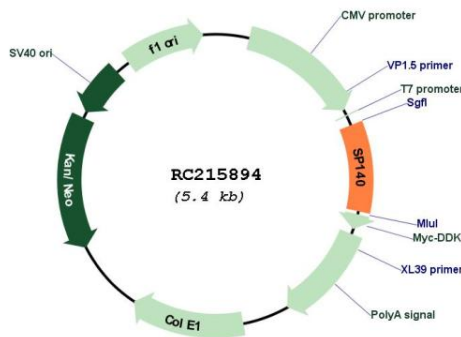
Cytogenetics: 2q37.1

Protein Families: Druggable Genome, Transcription Factors

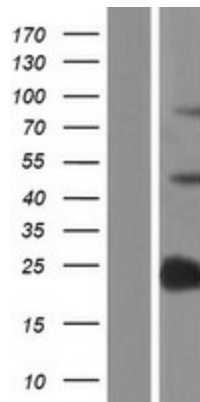
MW: 19.8 kDa

Gene Summary: This gene encodes a member of the SP100 family of proteins, which are share common domains including an N-terminal homogeneously staining region domain followed by a SP100/autoimmune regulator/NucP41/P75/deformed epidermal autoregulatory factor domain, a plant homeobox zinc finger, and a bromodomain. The encoded protein is interferon-inducible and is expressed at high levels in the nuclei of leukocytes. Variants of this gene have been associated with multiple sclerosis, Crohn's disease, and chronic lymphocytic leukemia. Alternative splicing results in multiple variants. [provided by RefSeq, Aug 2016]

Product images:



Circular map for RC215894



Western blot validation of overexpression lysate (Cat# [LY423962]) using anti-DDK antibody (Cat# [TA50011-100]). Left: Cell lysates from untransfected HEK293T cells; Right: Cell lysates from HEK293T cells transfected with RC215894 using transfection reagent MegaTran 2.0 (Cat# [TT210002]).