

Product datasheet for RC215892

HOMER1 (NM_004272) Human Tagged ORF Clone

Product data:

Product Type:	Expression Plasmids
Product Name:	HOMER1 (NM_004272) Human Tagged ORF Clone
Tag:	Myc-DDK
Symbol:	HOMER1
Synonyms:	HOMER; HOMER1A; HOMER1B; HOMER1C; SYN47; Ves-1
Mammalian Cell Selection:	Neomycin
Vector:	pCMV6-Entry (PS100001)
E. coli Selection:	Kanamycin (25 ug/mL)
ORF Nucleotide Sequence:	>RC215892 representing NM_004272 Red=Cloning site Blue=ORF Green=Tags(s)

TTTTGTAATACGACTCACTATAGGGCGGCCGGAATTCGTCGACTGGATCCGGTACCGAGGAGATCTGCC
GCC**CGATCGCC**

ATGGGGGAACAACCTATCTTCAGCACTCGAGCTCATGTCTTCCAAATTGACCCAAACACAAAGAAGAACT
GGGTACCGACCAGCAAGCATGCAGTTACTGTGTCTTATTCTATGACAGCACAAGAAATGTGTATAGGAT
AATCAGTTTAGATGGCTCAAAGGCAATAATAAATAGTACCATCACCCAAACATGACATTTACTAAAACA
TCTCAGAAGTTTGCCAGTGGGCTGATAGCCGGGCAAACACCGTTTATGGATTGGGATTCTCCTCTGAGC
ATCATCTTTCGAAATTTGCAGAAAAGTTTCAGGAATTTAAGAAGCTGCTCGACTAGCAAAGGAAAAATC
ACAAGAGAAGATGGAACCTACCAGTACACCTTCACAGGAATCCGCAGCGGGGATCTTCAGTCTCCTTTA
ACACCGGAAAGTATCAACGGGACAGATGATGAAAGAACACCTGATGTGACACAGAACTCAGAGCCAAGGG
CTGAACCAACTCAGAATGCATTGCCATTTTCACATAGTTCAGCAATCAGCAAACATTGGGAGGCTGAACT
GGCTACCTCAAAGGAAATAATGCCAACTCACTGCAGCCCTGCTGGAGTCCACTGCCAATGTGAAACAA
TGGAAACAGCAACTTGCTGCCTATCAAGAGGAAGCAGAACGTCTGCACAAGCGGGTACTGAACTTGAAT
GTGTTAGTAGCCAAGCAAATGCAGTACATACTCATAAGACAGAATTAATCAGACAATACAAGAAGTGA
AGAGGCACTGAACTGAGGGAAGAGGAAATAGAAAAGTTAAAACAAGAAATGATAATGCCAGAGAACTA
CAAGAACAGAGGGATTCTTTGACTCAGAACTACAGGAAGTAAATTCGGAACAAGACCTGGAGGGGAC
AACTGTCTGACTTAGAGCAACGTCTGGAGAAAAGTCAGAATGAACAAGAAGCTTTTCGCAATAACCTGAA
GACACTCTTAGAAATCTGGATGAAAGATATTTGAACTAACAGAATTACGAGATAACTTGGCCAAGCTA
CTAGAATGCAGC

ACGCGTACGCGGCCGCTCGAGCAGAACTCATCTCAGAAGAGGATCTGGCAGCAATGATATCCTGGATT
ACAAGGATGACGACGATAAGGTTAA



[View online »](#)

Protein Sequence: >RC215892 representing NM_004272
Red=Cloning site Green=Tags(s)

MGEQPIFSTRAHVFDIDPNTKKNWVPTSKHAVTVSYFYDSTRNVYRIISLDGSKAIINSTITPNMTFTKT
 SQKFGQWADSRANTVYGLGFSSEHHLSKFAEKQEFKEAARLAKEKSQEKMELTSTPSQESAGDLQSP
 TPESINGTDDERTPDVTQNSEPRAEPTQNALPFSSSAISKHWEAELATLKGNNAKLTAALLESTANVKQ
 WKQQLAAYQEAAERLHKRVTELECYSSQANAVHHTKTELNQTIQELEEAALKLREEEIERLKQEQIDNAREL
 QEQRDSLTKLQEQVEIRNKDLEGQLSDLEQRLEKSQNEQEAFRNNLKTLLLEILDGKIFELTELRDNLAKL
 LECS

TRTRPLEQKLISEEDLAANDILDYKDDDDKV

Chromatograms: https://cdn.origene.com/chromatograms/mk6455_a06.zip

Restriction Sites: SgfI-MluI

Cloning Scheme:



ACCN: NM_004272

ORF Size: 1062 bp

OTI Disclaimer: The molecular sequence of this clone aligns with the gene accession number as a point of reference only. However, individual transcript sequences of the same gene can differ through naturally occurring variations (e.g. polymorphisms), each with its own valid existence. This clone is substantially in agreement with the reference, but a complete review of all prevailing variants is recommended prior to use. [More info](#)

OTI Annotation: This clone was engineered to express the complete ORF with an expression tag. Expression varies depending on the nature of the gene.

Components: The ORF clone is ion-exchange column purified and shipped in a 2D barcoded Matrix tube containing 10ug of transfection-ready, dried plasmid DNA (reconstitute with 100 ul of water).

Reconstitution Method:

1. Centrifuge at 5,000xg for 5min.
2. Carefully open the tube and add 100ul of sterile water to dissolve the DNA.
3. Close the tube and incubate for 10 minutes at room temperature.
4. Briefly vortex the tube and then do a quick spin (less than 5000xg) to concentrate the liquid at the bottom.
5. Store the suspended plasmid at -20°C. The DNA is stable for at least one year from date of shipping when stored at -20°C.

RefSeq: [NM_004272.5](#)

RefSeq Size: 4228 bp

RefSeq ORF: 1065 bp

Locus ID: 9456

UniProt ID: [Q86YM7](#)

Cytogenetics: 5q14.1

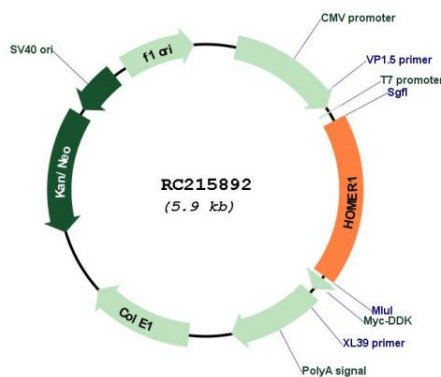
Domains: WH1

Protein Families: Druggable Genome

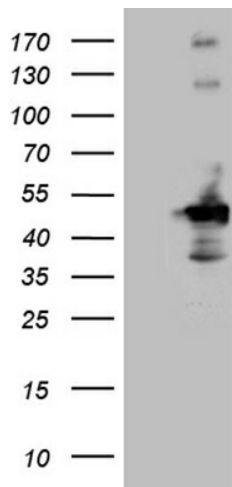
MW: 40.1 kDa

Gene Summary: This gene encodes a member of the homer family of dendritic proteins. Members of this family regulate group 1 metabotropic glutamate receptor function. [provided by RefSeq, Jul 2008]

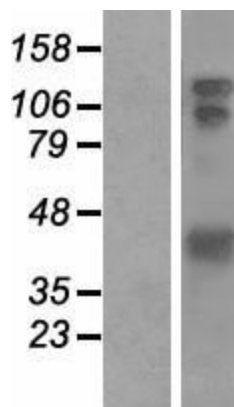
Product images:



Circular map for RC215892



HEK293T cells were transfected with the pCMV6-ENTRY control (Cat# [PS100001], Left lane) or pCMV6-ENTRY HOMER1 (Cat# RC215892, Right lane) cDNA for 48 hrs and lysed. Equivalent amounts of cell lysates (5 ug per lane) were separated by SDS-PAGE and immunoblotted with anti-HOMER1 (1:2000) (Cat# [TA811745]). Positive lysates [LY418101] (100ug) and [LC418101] (20ug) can be purchased separately from OriGene.



Western blot validation of overexpression lysate (Cat# [LY418101]) using anti-DDK antibody (Cat# [TA50011-100]). Left: Cell lysates from untransfected HEK293T cells; Right: Cell lysates from HEK293T cells transfected with RC215892 using transfection reagent MegaTran 2.0 (Cat# [TT210002]).