

Product datasheet for **RC215888**

SMC1 (SMC1A) (NM_006306) Human Tagged ORF Clone

Product data:

Product Type:	Expression Plasmids
Product Name:	SMC1 (SMC1A) (NM_006306) Human Tagged ORF Clone
Tag:	Myc-DDK
Symbol:	SMC1
Synonyms:	CDLS2; DEE85; DXS423E; EIEE85; SB1.8; SMC1; SMC1alpha; SMC1L1; SMCB
Mammalian Cell Selection:	Neomycin
Vector:	pCMV6-Entry (PS100001)
E. coli Selection:	Kanamycin (25 ug/mL)
ORF Nucleotide Sequence:	>RC215888 representing NM_006306 Red=Cloning site Blue=ORF Green=Tags(s)

TTTTGTAATACGACTCACTATAGGGCGGCCGGAATTCGTCGACTGGATCCGGTACCGAGGAGATCTGCC
GCC**CGATCGCC**

ATGGGGTTCCTGAAACTGATTGAGATTGAGAACTTTAAGTCGTACAAGGGTCGACAGATTATCGGACCAT
TTCAGAGGTTACCGCCATCATTGGACCAATGGCTCTGGTAAGTCAAATCTCATGGATGCCATCAGCTT
TGTGCTAGGTGAAAAACCAGCAACTGCGGGTAAAGACCCTGCGGGACCTGATCCATGGAGCTCCTGTG
GGCAAGCCAGCTGCCAACCGGCCCTTTGTCAGCATGGTCTACTCTGAGGAGGGTGTGAGGACCGTACCT
TTGCCCGTGTCTTGTAGGAGGTTCTTCTGAGTACAAGATCAACAACAAAGTGGTCCAACATACATGAGTA
CAGTGAGGAATTAGAGAAGTTGGGCATTCTCATCAAAGCTCGTAACTTCCTCGTTTTCCAGGGTGTGTG
GAATCTATTGCCATGAAGAACCCTCAAAGAGAGGACAGCTCTATTTGAAGAGATTAGTCGTTCTGGGAGC
TGGCGCAGGAGTATGACAAGCGAAAAGAAGGAAATGGTGAAGGCTGAAGAGGACACACAGTTTAATTACCA
TCGCAAGAAAAATATTGCGGCTGAACGCAAGGAAGCAAAGCAGGAGAAAGAAGAGGCTGACCGGTACCG
CGCCTGAAGGATGAGGTAGTACGGGCTCAGGTACAGCTGCAGCTCTTTAAGCTTTACCATAATGAAGTGG
AAATTGAGAAGCTCAACAAGGAAGTGGCCTCAAAGAACAAGGAGATCGAGAAGGACAAGAAGCGTATGGA
CAAGGTGGAGGATGAAGTGAAGGAGAAGAAGAAGGAGCTGGGCAAAATGATGCGGGAGCAGCAGCAGATT
GAGAAGGAGATCAAGGAGAAGGACTCAGAATTGAACCAGAAGCGGCTCAGTACATCAAAGCCAAGGAGA
ACACCTCCACAAAATCAAGAAGCTGGAAGCAGCCAAGAAGTCTCTGCAGAATGCTCAGAAGCACTACAA
GAAGCGTAAAGGTGACATGGATGAGCTGGAGAAGGAGATGCTGTGAGTGGAGAAGGCTCGCAGGAGTTT
GAAGAACGGATGGAAGAAGAGAGTCAAGTCAAGGAGGAGATTTGACGTTGGAGGAGAATCAGGTGAAGA
AATACCACCGGTTGAAAGAAGAAGCCAGCAAGAGAGCAGCTACCTGGCCAGGAGCTGGAGAAATTCAA
TCGAGACCAGAAAGCTGACCAGGACCGTCTGGATCTGGAAGAACGGAAGAAAGTAGAGACAGAGGCCAAG
ATCAAGCAAAAGCTGCGGAAAATTAAGAGAATCAGAAGCGGATTGAGAACTGGAGGAATACATACCA
CTAGCAAGCAGTCCCTAGAAGAGCAGAAGAAGCTAGAGGGGAGCTGACAGAGGAGGTGGAGATGGCCAA
GCGGCGTATTGATAAATCAATAAGGAGCTGAACCAGGTGATGGAGCAGTATGGGATGCCCGCATCGAC



[View online »](#)

CGCCAGGAGAGCAGCCGCCAGCAGCGAAAGGCAGAGATAATGGAAAGCATCAAGCGCCTTTACCCTGGCT
CTGTGTACGGCCGCTCATTGACCTATGCCAGCCACACAAAAGAAGTATCAGATTGCTGTAAACCAAGGT
TTTGGGCAAGAACATGGATGCCATTATTGTGGACTCGGAGAAGACAGGCCGGGACTGTATTCAAGTATATC
AAGGAGCAGCGTGGGGAGCCTGAGACCTTCTTGCCTCTTGACTACCTGGAGGTGAAGCCTACAGATGAGA
AACTCCGGGAGCTGAAGGGGGCCAAGCTAGTGATTGATGTGATTTCGCTATGAGCCACCTCATATCAAAAA
GGCCCTGCAGTATGCTTGTGGCAATGCCCTTGTCTGTGACAACGTGGAAGATGCCCGCCGATTGCCTTT
GGAGGCCACCAGGCCACAAGACAGTGGCACTGGATGGAACCTATTCCAGAAGTCAGGAGTGTCTCTG
GTGGGGCCAGTGACCTGAAGGCCAAGGCACGGCGCTGGGATGAGAAAGCAGTAGACAAGTTGAAAGAGAA
GAAGGAGCGCTTGACAGAGGAGCTGAAAGAGCAGATGAAGGCCAAAACGGAAAGAGGCAGAGCTGCGTCAG
GTGCACTCTCAGGCCATGGACTGCAGATGCGGCTCAAGTACTCCAGAGTGACCTAGAACAGACCAAGA
CACGACATCTAGCCCTGAATCTGCAGGAAAAATCCAAGCTGGAGAGTGAGCTAGCCAACCTTTGGGCTCG
CATTAATGATATCAAGAGGATCATTAGAGCCGAGAGAGGAAATGAAAGACTTGAAGGAGAAGTGAAC
CAGGTAGAGGATGAGGTGTTGAAGAGTTTTGTCGGGAGATTGGTGTGCGCAACATCCGGGAGTTTGAGG
AAGAAAAGGTGAAACGGCAGAATGAAATCGCCAAGAAGCGTTTGGAGTTTGAAGAATCAGAAGACTCGCTT
GGCATTCAAGTTGATTTTGAAGAACAACCTGAAGGAGACCAAGATAAAGTACACATGTGGGAGCAG
ACAGTGAAAAAGATGAAATGAGATAGAAAAGCTCAAAAAGGAGGAACAAGACACATGAAGATCATAG
ATGAGACCATGGCTCAGCTACAAGACCTGAAGAATCAGCATCTGGCCAAGAAGTCGGAAGTGAATGACAA
GAATCATGAGATGGAGGAGATTCGTAAGAACTCGGGGGCGCAACAAGGAAATGACCCATTTACAGAAG
GAGGTGACAGCCATTGAGACCAAGCTTGAACAGAAGCGCAGTGACCGTCAACAACCTTGCTACAGGCCTGTA
AGATGCAGGACATTAAGTTGCCACTGTCAAAGGCACCATGGATGATATTAGTCAGGAAGAGGGTAGCTC
CCAGGGGGAGGACTCAGTGAGTGTTTACAGAGAATTTCCAGTATCTATGCACGAGAGGCCCTCATTGAG
ATTGACTACGGTGATCTGTGTGAGGATCTGAAGGATGCCAGGCTGAGGAAGAGATCAAGCAAGAGATGA
ACACACTGCAGCAGAAGCTGAATGAGCAGCAGAGTGTGCTTCAGCGTATTGCCGCCCAACATGAAGGC
CATGGAAGAAGCTGGAAGTGTCCGAGACAAGTTCCAGGAGACCTCAGATGAGTTTGAAGCAGCCCGAAAG
CGAGCAAAGAAGGCCAAGCAGGCATTGAAACAGATCAAGAAGGAGCGCTTTGACCCTTCAATGCTTGT
TTGAATCTGTGGTACCAACATTGATGAGATCTATAAGGCCCTGTCCCGCAATAGCAGTGCCAGGCATT
CCTGGGCCCTGAGAACCCTGAAGAGCCCTACTTGGATGGCATCAACTACAACCTGTGTGGCTCCTGGGAAA
CGCTTCCGGCCTATGGACAACCTTGTGAGCGGGGAGAAGACAGTGGCAGCTTGGCCCTGCTTTTGCCA
TCCACAGCTACAAGCCAGCCCCCTTCTTCGTCTGGATGAGATTGATGCTGCCTTGATAACACCAACAT
TGGCAAGGTGGCAAATTACATCAAGGAGCAGTCGACTTGAACCTCCAGGCCATCGTCATCTCTCAAG
GAGGAGTTCTACACCAAGGCCGAGAGCCTCATTGGAGTCTATCCTGAGCAAGGGGACTGTGTGATCAGCA
AAGTCTGACCTTCGACCTACCAAGTACCCAGATGCCAACCCCAACCCCAATGAGCAG

ACGCGTACGCGGCCGCTCGAGCAGAACTCATCTCAGAAGAGGATCTGGCAGCAAATGATATCCTGGATT
ACAAGGATGACGACGATAAGGTTTAA

Protein Sequence: >RC215888 representing NM_006306
 Red=Cloning site Green=Tags(s)

MGFLKLIETENFKSYKGRQIIGPFQRFRTAIIGPNGSGKSNLMDAISFVLGEKTSNLRVKTLRDLIHGAPV
 GKPAANRAVSMVYSEGAEDRTFARVIVGGSSEYKINNKKVQLHEYSEELEKLGILIKARNFLVFQGAV
 ESIAMKNPKERTALFEEISRSGELAQEYDKRKKEMVKAEDTQFNHYHRKKNIAAERKEAKQEKKEEADRYQ
 RLKDEVVRAQVQLQLFKLYHNEVEIEKLNKELASKNKEIEKDKKRMDDKVEDELKEKKKELGKMMREQQQI
 EKEIKEKDESELNQKRPQYIKAKENTSHKIKKLEAAKSLQNAQKHKKRKGDMDELEKEMLSVEKARQEF
 EERMEESQSQGRDLTLEENQVKKYHRLKEEASKRAATLAQELEKFNDRDQKADQDRDLDEERKKVETEA
 IKQKLEIEENQKRIEKLEEYITTSKQSLQKLEKLEGELEEVEMAKRRIDEINKELNQVMEQLGDARID
 RQESSRQQRKAEIMESIKRLYPGSVYGRIDLQPTQKKYQIAVTKVLGKNMDAIIVDSEKTRGDCIQYI
 KEQRGEPETFLPLDYLEVKPTDEKLRELKGAKLVIDVIRYEPPIKALQYACGNALVCDNVEDARRIAF
 GGHQRHKTVALDGTLFQKSGVISGGASDLKAKARRWDEKAVDKLKEKKERLTELKEQMKAKRKEAELRQ
 VQSQAHGLQMRKYSQSDLEQTKTRHLALNLQEKSKLESELANFGPRINDIKRIIQSREREMKDLKEKMN
 QVEDEVFEFECREIGVRNIREFEEKVKRQNEIAKKRLEFENQKTRLGIQLDFEKNQLKEDQDKVHMWEQ
 TVKKDENEIEKLEKKEEQRHMKIIDETMAQLQDLKNQHLAKKSEVNDKNHEMEEIRKKGANKEMTHLQK
 EVTAIETKLEQKRSRDRHLLQACKMQDIKPLSKGTMDDISQEEGSSQGEDSVSGSQRISSIYAREALIE
 IDYGDLCEDLKDAQAEIEIKQEMNTLQKLEQQSVLQRIAAPNMKAMEKLESVRDKFQETSDFEAARK
 RAKKAKQAFEQIKKERFRFNACFESVATNIDEIYKALSRNSSAQFLGPNPEEPYLDGINYNVCVAPGK
 RFRPMDNLSGGEKTVAALALLFAIHSYKPAFFVLDEIDAALDNTNIGKVANYIKEQSTCNFQAIIVISLK
 EEFYTKAESLIGVYPEQGDVISKVLTDFLTKYPDANPNNEQ

TRTRPLEQKLISEEDLAANDILDYKDDDDK

Chromatograms: https://cdn.origene.com/chromatograms/mk6169_c12.zip

Restriction Sites: SgfI-MluI

Cloning Scheme:



ACCN: NM_006306

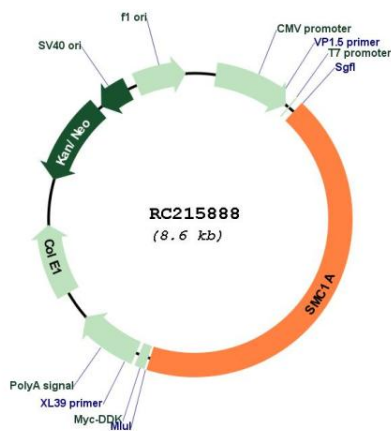
ORF Size: 3699 bp

OTI Disclaimer:	The molecular sequence of this clone aligns with the gene accession number as a point of reference only. However, individual transcript sequences of the same gene can differ through naturally occurring variations (e.g. polymorphisms), each with its own valid existence. This clone is substantially in agreement with the reference, but a complete review of all prevailing variants is recommended prior to use. More info
OTI Annotation:	This clone was engineered to express the complete ORF with an expression tag. Expression varies depending on the nature of the gene.
Components:	The ORF clone is ion-exchange column purified and shipped in a 2D barcoded Matrix tube containing 10ug of transfection-ready, dried plasmid DNA (reconstitute with 100 ul of water).
Reconstitution Method:	<ol style="list-style-type: none"> 1. Centrifuge at 5,000xg for 5min. 2. Carefully open the tube and add 100ul of sterile water to dissolve the DNA. 3. Close the tube and incubate for 10 minutes at room temperature. 4. Briefly vortex the tube and then do a quick spin (less than 5000xg) to concentrate the liquid at the bottom. 5. Store the suspended plasmid at -20°C. The DNA is stable for at least one year from date of shipping when stored at -20°C.
Note:	Plasmids are not sterile. For experiments where strict sterility is required, filtration with 0.22um filter is required.
RefSeq:	NM_006306.4
RefSeq Size:	9725 bp
RefSeq ORF:	3702 bp
Locus ID:	8243
UniProt ID:	Q14683
Cytogenetics:	Xp11.22
Domains:	SMC_N, SMC_C, KID
Protein Families:	Druggable Genome
Protein Pathways:	Cell cycle, Oocyte meiosis
MW:	143.1 kDa

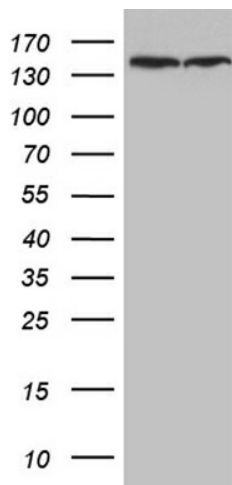
Gene Summary:

Proper cohesion of sister chromatids is a prerequisite for the correct segregation of chromosomes during cell division. The cohesin multiprotein complex is required for sister chromatid cohesion. This complex is composed partly of two structural maintenance of chromosomes (SMC) proteins, SMC3 and either SMC1B or the protein encoded by this gene. Most of the cohesin complexes dissociate from the chromosomes before mitosis, although those complexes at the kinetochore remain. Therefore, the encoded protein is thought to be an important part of functional kinetochores. In addition, this protein interacts with BRCA1 and is phosphorylated by ATM, indicating a potential role for this protein in DNA repair. This gene, which belongs to the SMC gene family, is located in an area of the X-chromosome that escapes X inactivation. Mutations in this gene result in Cornelia de Lange syndrome. Alternative splicing results in multiple transcript variants encoding different isoforms. [provided by RefSeq, Jul 2013]

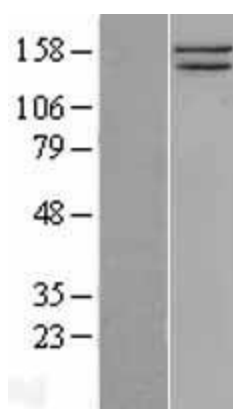
Product images:



Circular map for RC215888



HEK293T cells were transfected with the pCMV6-ENTRY control (Cat# [PS100001], Left lane) or pCMV6-ENTRY SMC1A (Cat# RC215888, Right lane) cDNA for 48 hrs and lysed. Equivalent amounts of cell lysates (5 ug per lane) were separated by SDS-PAGE and immunoblotted with anti-SMC1A (Cat# [TA809792])(1:500). Positive lysates [LY401901] (100ug) and [LC401901] (20ug) can be purchased separately from OriGene.



Western blot validation of overexpression lysate (Cat# [LY401901]) using anti-DDK antibody (Cat# [TA50011-100]). Left: Cell lysates from untransfected HEK293T cells; Right: Cell lysates from HEK293T cells transfected with RC215888 using transfection reagent MegaTran 2.0 (Cat# [TT210002]).