

## Product datasheet for RC215880

### ANP32C (NM\_012403) Human Tagged ORF Clone

#### Product data:

Product Type:	Expression Plasmids
Product Name:	ANP32C (NM_012403) Human Tagged ORF Clone
Tag:	Myc-DDK
Symbol:	ANP32C
Synonyms:	PP32R1
Mammalian Cell Selection:	Neomycin
Vector:	pCMV6-Entry (PS100001)
E. coli Selection:	Kanamycin (25 ug/mL)
ORF Nucleotide Sequence:	>RC215880 representing NM_012403 Red=Cloning site Blue=ORF Green=Tags(s)

TTTTGTAATACGACTCACTATAGGGCGGCCGGAATTCGTCGACTGGATCCGGTACCGAGGAGATCTGCC  
GCC**CGATCGCC**

ATGGAGATGGGCAGACGGATTTCATTCAGAGCTGCGGAACAGGGCGCCCTCTGATGTGAAAGAACTTGCCC  
TGGACAACAGTCGGTCGAATGAAGGCAAACCTCGAAGCCCTCACAGATGAATTTGAAGAACTGGAATTCCT  
AAGTAAAATCAACGGAGGCCTCACCTCAATCTCAGACTTACCAAAGTTAAAGTTGAGAAAGCTTGAACCTA  
AGAGTCTCAGGGGCCTGGAAGTATTGGCAGAAAAGTGTCAAACCTCACGCATCTATATTTAAGTGCCA  
ACAAAATTAAGACCTCAGCACAATAGAGCCACTGAAACAGTTAGAAAACCTCAAGAGCTTAGACCTTTT  
CAATTGCGAGGTAACCAACCTGAACGACTACGGAGAAAACGTGTTCAAGCTTCTCCTGCAACTCACATAT  
CTCGACAGCTGTTACTGGACCACAAGGAGGCCCTTACTCAGATATTGAGGACCACGTGGAGGGCCTGG  
ATGACGAGGAGGAGGTTGAGCATGAGGAGGAGTATGATGAAGATGCTCAGGTAGTGAAGATGAGGAGGG  
CGAGGAGGAGGAGGAGGAAGGTGAAGAGGAGGACGTGAGTGGAGGGGACGAGGAGGATGAAGAAGGTTAT  
AACGATGGAGAGGTAGATGGCGAGGAAGATGAAGAAGAGCTTGGTGAAGAAGAAAGGGGTGAGAAGCGAA  
AA

**ACGCGT**ACGCGGCCGCTCGAGCAGAAACTCATCTCAGAAGAGGATCTGGCAGCAAATGATATCCTGGATT  
ACAAGGATGACGACGATAAGGTTTAA



[View online »](#)



**Reconstitution Method:**

1. Centrifuge at 5,000xg for 5min.
2. Carefully open the tube and add 100ul of sterile water to dissolve the DNA.
3. Close the tube and incubate for 10 minutes at room temperature.
4. Briefly vortex the tube and then do a quick spin (less than 5000xg) to concentrate the liquid at the bottom.
5. Store the suspended plasmid at -20°C. The DNA is stable for at least one year from date of shipping when stored at -20°C.

**RefSeq:** [NM\\_012403.1](#), [NP\\_036535.1](#)

**RefSeq Size:** 705 bp

**RefSeq ORF:** 705 bp

**Locus ID:** 23520

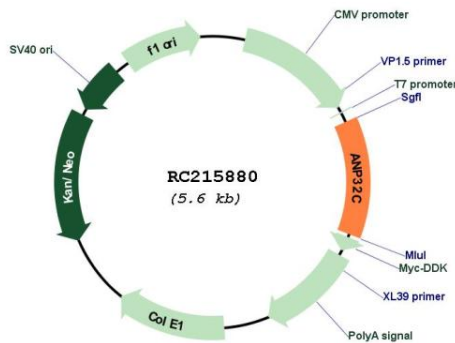
**UniProt ID:** [O43423](#)

**Cytogenetics:** 4q32.3

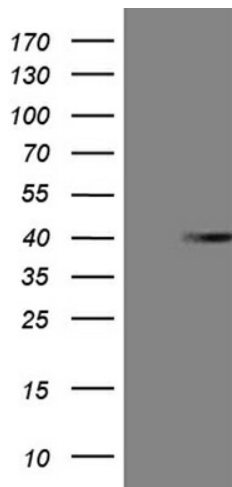
**MW:** 26.6 kDa

**Gene Summary:** Phosphoprotein 32 (PP32) is a tumor suppressor that can inhibit several types of cancers, including prostate and breast cancers. The protein encoded by this gene is one of at least two proteins that are similar in amino acid sequence to PP32 and are part of the same acidic nuclear phosphoprotein gene family. However, unlike PP32, the encoded protein is tumorigenic. The tumor suppressor function of PP32 has been localized to a 25 amino acid region that is divergent between PP32 and the protein encoded by this gene. This gene does not contain introns. [provided by RefSeq, Jul 2008]

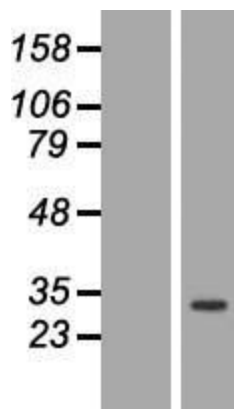
**Product images:**



Circular map for RC215880



HEK293T cells were transfected with the pCMV6-ENTRY control (Cat# [PS100001], Left lane) or pCMV6-ENTRY ANP32C (Cat# RC215880, Right lane) cDNA for 48 hrs and lysed. Equivalent amounts of cell lysates (5 ug per lane) were separated by SDS-PAGE and immunoblotted with anti-ANP32C (Cat# [TA809613])(1:2000). Positive lysates [LY415781] (100ug) and [LC415781] (20ug) can be purchased separately from OriGene.



Western blot validation of overexpression lysate (Cat# [LY415781]) using anti-DDK antibody (Cat# [TA50011-100]). Left: Cell lysates from untransfected HEK293T cells; Right: Cell lysates from HEK293T cells transfected with RC215880 using transfection reagent MegaTran 2.0 (Cat# [TT210002]).