

Product datasheet for **RC215877**

SLC5A11 (NM_052944) Human Tagged ORF Clone

Product data:

Product Type:	Expression Plasmids
Product Name:	SLC5A11 (NM_052944) Human Tagged ORF Clone
Tag:	Myc-DDK
Symbol:	SLC5A11
Synonyms:	KST1; RKST1; SGLT6; SMIT2
Mammalian Cell Selection:	Neomycin
Vector:	pCMV6-Entry (PS100001)
E. coli Selection:	Kanamycin (25 ug/mL)



[View online »](#)

ORF Nucleotide
Sequence:

>RC215877 representing NM_052944
 Red=Cloning site Blue=ORF Green=Tags(s)

TTTTGTAATACGACTCACTATAGGGCGGCCGGAATTCGTCGACTGGATCCGGTACCGAGGAGATCTGCC
 GCCGCGATCGCC

ATGGAGAGCGGCACCAGCAGCCCTCAGCCTCCACAGTTAGATCCCCTGGATGCGTTTCCCAGAAGGGCT
 TGGAGCCTGGGGACATCGCGGTGCTAGTTCTGTACTTCCTCTTTGTCCTGGCTGTTGGACTATGGTCCAC
 AGTGAAGACCAAAAGAGACACAGTGAAAGGCTACTTCCTGGCTGGAGGGACATGGTGTGGTGGCCAGTG
 GGTGCATCCTTGTGGCCAGCAATGTTGGAAGTGGACATTTTCATTGGCCTGGCAGGGTCAAGTGTGCTA
 CGGGCATTCTGTATCAGCTTATGAACCTAATGGCTTGTCTGTGCTGATGTTGGCCTGGATCTTCTCT
 ACCCATCTACATTGCTGGTCAGGTCAACACGATGCCAGAATACCTACGGAAGCGCTTCGGTGGCATCAGA
 ATCCCCATCATCTGGCTGACTCTACCTATTTATCTACATCTTACCAAGATCTCGGTAGACATGTATG
 CAGGTGCCATCTTCATCCAGCAGTCTTGCACCTGGATCTGTACCTGGCCATAGTTGGGCTACTGGCCAT
 CACTGCTGTATACACGGTTGCTGGTGGCCTGGCTGCTGTGATCTACACGGATGCCCTGCAGACGCTGATC
 ATGCTTATAGGAGCGCTACCTTGATGGCTACAGTTTCGCCCGGTTGGTGGGATGGAAGGACTGAAGG
 AGAAGTACTTCTTGGCCCTGGCTAGCAACCGGAGTGAGAACAGCAGCTGCGGGCTGCCCGGGAAGATGC
 CTTCCATATTTCCGAGATCCGCTGACATCTGATCTCCCGTGGCCGGGGTCTATTTGGAATGTCCATC
 CCATCCCTCTGGTACTGGTGCACGGATCAGGTGATTGTCCAGCGGACTCTGGCTGCCAAGAACCTGTCCC
 ATGCCAAAGGAGGTGCTCTGATGGCTGCATACCTGAAGGTGCTGCCCTCTTATAATGGTGTCCCTGG
 GATGGTCAGCCGATCCTCTTCCAGATCAAGTGGCCTGTGCAGATCCAGAGATCGCCAGAAGATCTGC
 AGCAACCCCTCAGGCTGTTCCGACATTCGATATCCAAACTCGTCTGGAACCTCTGCCACAGGGCTCC
 GTGGGCTGATGATGGCTGTGATGGTGGCGGCTCATGTCTCCCTCACCTCCATCTTTAACAGTGCCAG
 CACCATCTTACCATGGACCTCTGGAATCACCTCCGGCCTCGGGCATCTGAGAAGGAGCTCATGATTGTG
 GGCAGGGTGTGGTGTGCTGCTGGTCTCCATCCTCTGGATCCCTGTGGTCCAGGCCAGCCAGG
 GCGGCCAGCTCTTATCTATATCCGGTCCATCAGCTCCTACCTGCAGCCGCTGTGGCGGTGGTCTTCTAT
 CATGGGATGTTTCTGGAAGAGGACCAATGAAAAGGGTGCCTTCTGGGCTGATCTCGGGCTGCTCCTG
 GGCTTGGTTAGGCTGGTCTGGACTTTATTTACGTGCAGCCTCGATGCGACCAGCCAGATGAGCGCCGG
 TCCTGGTGAAGAGCATTCACTACCTCTACTTCTCCATGATCCTGTCCACGGTCAACCTCATCACTGTCTC
 CACCGTGAGCTGGTTCACAGAGCCACCTCCAAGGAGATGGTCAGCCACCTGACCTGGTTTACTCGTCAC
 GACCCCGTGGTCCAGAAGGAACAAGCACCACCAGCAGCTCCCTTGTCTTACCCTCTCTCAGAACGGGA
 TGCCAGAGGCCAGCAGCAGCAGCAGCGTCCAGTTCGAGATGGTTCAAGAAAACACGTCTAAAACCCACAG
 CTGTGACATGACCCAAAGCAGTCCAAAGTGGTGAAGGCCATCCTGTGGCTCTGTGGAATACAGGAGAAG
 GGCAAGGAAGAGCTCCCGGCCAGAGCAGAAGCCATCATAGTTTCCTGGAAGAAAACCCCTTGGTGAAGA
 CCCTCCTGGACGTCAACCTCATTTTCTGCGTGAGCTGCGCCATCTTTATCTGGGGCTATTTTGT

ACGCGTACGCGGCCGCTCGAGCAGAACTCATCTCAGAAGAGGATCTGGCAGCAATGATATCCTGGATT
 ACAAGGATGACGACGATAAGGTTTAA

Reconstitution Method:

1. Centrifuge at 5,000xg for 5min.
2. Carefully open the tube and add 100ul of sterile water to dissolve the DNA.
3. Close the tube and incubate for 10 minutes at room temperature.
4. Briefly vortex the tube and then do a quick spin (less than 5000xg) to concentrate the liquid at the bottom.
5. Store the suspended plasmid at -20°C. The DNA is stable for at least one year from date of shipping when stored at -20°C.

RefSeq: [NM_052944.4](#)

RefSeq Size: 2384 bp

RefSeq ORF: 2028 bp

Locus ID: 115584

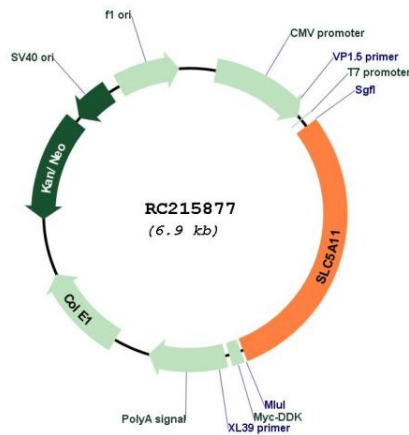
UniProt ID: [Q8WWX8](#)

Cytogenetics: 16p12.1

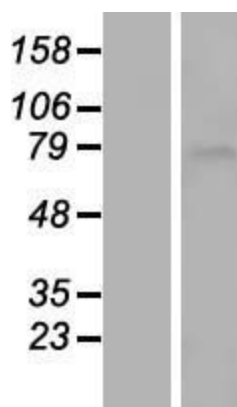
MW: 73.9 kDa

Gene Summary: Cotransporters, such as SLC5A11, represent a major class of proteins that make use of ion gradients to drive active transport for the cellular accumulation of nutrients, neurotransmitters, osmolytes, and ions Roll et al. (2002) [PubMed 12039040]. [supplied by OMIM, Mar 2008]

Product images:



Circular map for RC215877



Western blot validation of overexpression lysate (Cat# [LY409379]) using anti-DDK antibody (Cat# [TA50011-100]). Left: Cell lysates from untransfected HEK293T cells; Right: Cell lysates from HEK293T cells transfected with RC215877 using transfection reagent MegaTran 2.0 (Cat# [TT210002]).