

## Product datasheet for **RC215875**

### ST3GAL3 (NM\_174963) Human Tagged ORF Clone

#### Product data:

Product Type:	Expression Plasmids
Product Name:	ST3GAL3 (NM_174963) Human Tagged ORF Clone
Tag:	Myc-DDK
Symbol:	ST3GAL3
Synonyms:	DEE15; EIEE15; MRT12; SIAT6; ST3GALII; ST3Gal III; ST3GalIII; ST3N
Mammalian Cell Selection:	Neomycin
Vector:	pCMV6-Entry (PS100001)
E. coli Selection:	Kanamycin (25 ug/mL)



[View online »](#)

**ORF Nucleotide Sequence:**

>RC215875 representing NM\_174963  
 Red=Cloning site Blue=ORF Green=Tags(s)

TTTTGTAATACGACTCACTATAGGGCGGCCGGGAATTCGTCGACTGGATCCGGTACCGAGGAGATCTGCC  
 GCC**GCGATCGCC**

ATGGGACTCTTGGTATTTGTGCGCAATCTGCTGCTAGCCCTCTGCCTCTTTCTGGTACTGGGATTTTTGT  
 ATTATTCTGCGTGAAGCTACACTTACTCCAGTGGGAGGAGACTCCAGTAAGTATAGTCACTCTAGCTC  
 ACCCCAGGAGAAGCCTGTTGCAGATTCACTGGTTCTTTCTTTGACTCCGCTGGACAAACTAGGCTCA  
 GAGTATGATCGGTTGGGCTTCTCCTGAATCTGGACTCTAAACTCTACCGAGGACTCTCTGCACGGTGG  
 TTTTTGGCCTTGACTGCATATTGGAATCACCTGGAGAGCCTAAAAAATTACTGATGCCTGCATCCCACCC  
 TCTAGAGATTTTGAAGTCACTGAGCGAGGACACAGCCTTTCATTAGGATTTTTAAAGCTGCCAGGCT  
 GCTGAATTAGCCACCAAGTACGCAAACTTTTCAGAGGGAGCTTGAAGCCTGGCTATGCTTCAGCCTTGA  
 TGACGGCCATCTCCCCGGTTCTCAAGCCAGCACCCATGTTCTGGATGACTCCTTCGCAAGTGGGC  
 TAGAATCCGGGAGTTCGTGCCGCTTTTGGGATCAAAGTCAAGACAATCTGATCAAAGCCATCTTGTC  
 GTCACCAAAGAGTACCGCTGACCCCTGCCTTGGACAGCCTCCGCTGCCGCCGCTGCATCATCGTGGCA  
 ATGGAGGCGTCTTGGCAACAAGTCTCTGGGGTACGAATTGACGACTATGACATTGTGGTGAGACTGAA  
 TTCAGCACCAAGTAAAGGCTTTGAGAAGGACGTGGGCAGCAAAACGACACTGCGCATCACCTACCCCGAG  
 GGCGCCATGCAGCGGCTGAGCAGTACGAGCGGATTCTCTTTGTCTCGCCGGCTTCAAGTGGCAGG  
 ACTTTAAGTGGTTGAAATACATCGTCTACAAGGAGAGTGAAGTGCATCGGATGGCTTCTGGAAATCTGT  
 GGCCACTCGAGTGCCCAAGGAGCCCCCTGAGATTGCAATCCTCAACCCATATTTTCATCCAGGAGGCCGCC  
 TTCACCCTCATTGGCCTGCCCTTCAACAATGGCCTCATGGGCCGGGGAAACATCCCTACCCTTGGCAGTG  
 TGGCAGTGACCATGGCACTACACGGCTGTGACGAGGTGGCAGTGCAGGATTTGGCTATGACATGACAC  
 ACCCAACGCACCCTGCCTACTATGAGACCGTTTCGCATGGCAGCCATCAAAGAGTCTGGACGCACAAT  
 ATCCAGCGAGAGAAAGAGTTTCTGCGGAAGCTGGTGAAGCTCGCGTCATCACTGATCTAAGCAGTGGCA  
 TC

**ACGCGT**ACGCGGCCGCTCGAGCAGAACTCATCTCAGAAGAGGATCTGGCAGCAAATGATATCTGGATT  
 ACAAGGATGACGACGATAAGGTTTAA

**Protein Sequence:**

>RC215875 representing NM\_174963  
 Red=Cloning site Green=Tags(s)

MGLLVFVRNLLLALCLFLVLGFLYYSAWKLHLLQWEEDSSKYSHSSSPQEKPVADSVVLSFDSAGQTLGS  
 EYDRLGFLNLDSKLSRPTLCTVVFGLDCILESPGEPKLLMPASHPLEILKSLSEDTAFALGFLKLRP  
 AELATKYANFSEGACKPGYASALMTAIFPRFSKPAPMFLDDSFWRKWARIREFVPPFGIKGQDNLKAILS  
 VTKEYRLTPALDSLRCRRCIIVNGGVLANKSLGSRIDDYDIVVRLNSAPVKGFEDVGSKTLRLITYPE  
 GAMQRPEQYERDSLFLVLAGFKWQDFKWLKYIVYKERSASDGFVKSVATRPVKEPPEIRILNPYFIQEA  
 FTLIGLPFNGLMGRGNIPTLGSVAVTMALHGCDEAVAGFGYDMSTPNAPLHYETVRMAAIKESWITHN  
 IQREKEFLRKLVKARVITDLSSGI

**TR**TRPLEQKLISEEDLAANDILDYKDDDDKV

**Chromatograms:**

[https://cdn.origene.com/chromatograms/mk8060\\_d03.zip](https://cdn.origene.com/chromatograms/mk8060_d03.zip)

**Restriction Sites:**

Sgfl-Mlul

**Cloning Scheme:**


**ACCN:** NM\_174963

**ORF Size:** 1332 bp

**OTI Disclaimer:** The molecular sequence of this clone aligns with the gene accession number as a point of reference only. However, individual transcript sequences of the same gene can differ through naturally occurring variations (e.g. polymorphisms), each with its own valid existence. This clone is substantially in agreement with the reference, but a complete review of all prevailing variants is recommended prior to use. [More info](#)

**OTI Annotation:** This clone was engineered to express the complete ORF with an expression tag. Expression varies depending on the nature of the gene.

**Components:** The ORF clone is ion-exchange column purified and shipped in a 2D barcoded Matrix tube containing 10ug of transfection-ready, dried plasmid DNA (reconstitute with 100 ul of water).

**Reconstitution Method:**

1. Centrifuge at 5,000xg for 5min.
2. Carefully open the tube and add 100ul of sterile water to dissolve the DNA.
3. Close the tube and incubate for 10 minutes at room temperature.
4. Briefly vortex the tube and then do a quick spin (less than 5000xg) to concentrate the liquid at the bottom.
5. Store the suspended plasmid at -20°C. The DNA is stable for at least one year from date of shipping when stored at -20°C.

**RefSeq:** [NM\\_174963.5](#)

**RefSeq Size:** 2478 bp

**RefSeq ORF:** 1335 bp

**Locus ID:** 6487

**UniProt ID:** [Q11203](#)

**Cytogenetics:** 1p34.1

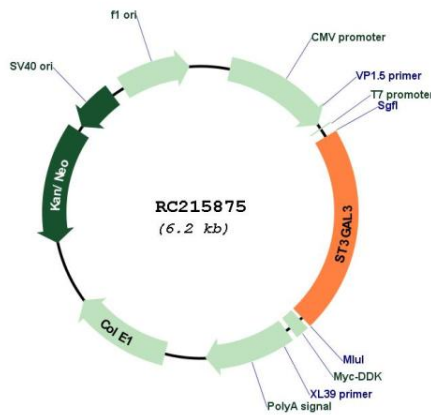
**Protein Families:** Secreted Protein, Transmembrane

**Protein Pathways:** Glycosphingolipid biosynthesis - lacto and neolacto series, Keratan sulfate biosynthesis, Metabolic pathways

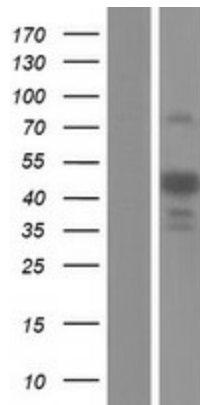
**MW:** 49.5 kDa

**Gene Summary:** The protein encoded by this gene is a type II membrane protein that catalyzes the transfer of sialic acid from CMP-sialic acid to galactose-containing substrates. The encoded protein is normally found in the Golgi apparatus but can be proteolytically processed to a soluble form. This protein is a member of glycosyltransferase family 29. Mutations in this gene have been associated with a form of autosomal recessive nonsyndromic cognitive disability as well as infantile epileptic encephalopathy. Multiple transcript variants encoding several different isoforms have been found for this gene. [provided by RefSeq, Jul 2017]

**Product images:**



Circular map for RC215875



Western blot validation of overexpression lysate (Cat# [LY406357]) using anti-DDK antibody (Cat# [TA50011-100]). Left: Cell lysates from untransfected HEK293T cells; Right: Cell lysates from HEK293T cells transfected with RC215875 using transfection reagent MegaTran 2.0 (Cat# [TT210002]).