

Product datasheet for **RC215874**

KDM3A / JHDM2A (KDM3A) (NM_018433) Human Tagged ORF Clone

Product data:

Product Type:	Expression Plasmids
Product Name:	KDM3A / JHDM2A (KDM3A) (NM_018433) Human Tagged ORF Clone
Tag:	Myc-DDK
Symbol:	KDM3A / JHDM2A
Synonyms:	JHDM2A; JHMD2A; JMJD1; JMJD1A; TSGA
Mammalian Cell Selection:	Neomycin
Vector:	pCMV6-Entry (PS100001)
E. coli Selection:	Kanamycin (25 ug/mL)
ORF Nucleotide Sequence:	>RC215874 representing NM_018433 Red=Cloning site Blue=ORF Green=Tags(s)

TTTTGTAATACGACTCACTATAGGGCGGCCGGAATTCGTCGACTGGATCCGGTACCGAGGAGATCTGCC
GCC**CGATCGCC**

ATGGTGCTCACGCTCGGAGAAAGTTGGCCGGTATTGGTGGGGAGGAGTTTCTCAGTCTGTCCGACGCC
ACGGCAGCGATGGCAGCCACGACAGCTGGGACGTGGAGCGCGTCGCCGAGTGGCCCTGGCTCTCCGGGAC
CATTTCGAGCTGTTTCCCACACCGACGTTACCAAGAAGGATCTGAAGGTGTGTGGAATTTGATGGGGAA
TCTTGGAGGAAAAGAAGATGGATAGAAGTCTACAGCCTTCTAAGGAGAGCATTTCAGTAGAACATAATT
TGGTTTTAGCTGAACGAAAGTCACCTGAAATTTCTGAACGAATTGTACAGTGGCCTGCAATAACGTACAA
ACCTCTGTTGGACAAAGCTGGTTTGGGATCCATAACTTCTGTTTCGCTTTCTGGGAGATCAACAAAGAGTA
TTCTTTCTAAAGACCTTTTGAAGCCTATACAGGATGTAACAGTCTTCGACTTTCTTTACGGATAATC
AGATTGTCAGTAAAGAATTTCAAGCTTTGATTGTGAAGCATTAGATGAAAGCCATCTTTTAAAAGGTGA
CAAAAACCTTAGTTGGTTCAGAAGTAAAAATTTATAGCTTGGACCCATCTACTCAGTGGTTTTTCAGCAACC
GTTATAAATGGAACCCAGCATCAAAAACCTTTCAAGTCAACTGTGAGGAGATCCAGCACTGAAAAATTG
TTGATCCGTCAGTATTCATGTTGAAGTGTACACGATAACCTTGTGACATGTGGTAATTTCTGCAAGAAT
TGGAGCTGTAACGCAAGTCTTCTGAGAATAATGGAACCCTGGTTTCCAACAAGCAAAATCTTGCTCT
GAGGCCCTCCCAGTATGTGCTGTGACGTCTGTACCTACAACAGTTTTTAAGGAGATACTGCTTGGCT
GTACTGCGGCAACTCCACTAGTAAGGACCCAAGACAGCAAAGTACTCCCCAGGCTGCCAACTCTCCACC
TAACCTTGGAGCAAAAATTCCTCAAGGATGTCATAAAACAAAGTTTACCAGAGGAAATTTCTTCTGTCTA
AATACAAAGTCTGAAGCTCTGAGAACAAAACCAGATGTCTGCAAAGCAGGGTTGCTCTCAAAGTCTCTC
AGATTGGAAGTGGAGACTTGAATTTCTGACTGAGCCAAAAGGCAGCTGTACTCAGCCTAAGACAAAACAC
TGATCAGGAAAACAGATTGGAGTCTGTTCCACAAGCATTGACTGGCCTTCTAAGGAGTGCTTACCTACA
AAGGCTTCTTCTAAGGCAGAATTGGAATTTGCCAATCCTCCTGAACTGCAGAAGCACCTAGAACATGCAC
CTTCCCACATCGGATGTTTCAAATGCACCAGAAGTGAAGCAGGTGCAATAGTGATAGCCCTAATAACTG
TTCAGGAAAAAAGGTAGAACCTTCAGCTTTAGCTTGCCGATCACAGAATTTAAAGGAATCTTCAGTAAAA



[View online »](#)

GTAGATAATGAAAGCTGTTGTTCAAGAAGCAACAATAAAATCCAGAATGCCCATCCAGGAAGTCGGTTT
TGACAGACCCAGCTAAACTCAAAAAGCTGCAACAGAGTGGCGAGGCCCTTCGTACAGGATGATTCTTGTGT
GAACATCGTGGCACAGTTGCCTAAATGCCGAGAGTGTGCGTTGGACAGTCTCCGCAAGGATAAGGAGCAA
CAGAAGGACTCACCTGTGTTTTGCCGCTCTTTCACTTCAGGAGGTTACAATTCAACAAACATGGTGTGT
TGCGGGTAGAAGGCTTCTTAACACCAACAAGTATGACAATGAAGCAATTGGCTTGTGGTTACCTTTAAC
CAAAAACGTTGTGGGATTGATTTGGACACAGCAAAGTACATCTTGCCCAACATTGGAGACCACTTCTGT
CAAATGGTGATTTCTGAAAAGGAAGCTATGTCAACTATTGAGCCACACAGACAGGTTGCTTGAAGCGGAG
CTGTCAAAGGTGTTGAGAAAATGTGTGATGTGTGCGACACCACCTCTTCAACCTGCACTGGGTGTGTCC
TCGGTGTGGGTTTGGAGTATGTGTGGACTGCTACCGGATGAAGAGAAAAGAAATTGCCAACAGGGTGTGTCT
TACAAGACTTTCTCTTGCTAAAATGTGTGAAGAGTCAAGATACATGAACCAGAGAAGCTTAATGCCACAC
AGATCATTCTGGAAAAGCACTCTATGATGTTGGAGACATTGTTCACTTCTGTAAGAGCGAAATGGGGAAT
AAAGGCAAACCTGCCCTTGTTCAAACAGGCAATTCAAACCTTTTTCAAAGCCAGCCTCAAAGGAAGACCTA
AAACAGACTTCTTAGCTGGAGAAAACCGACTCTTGGTGCAGTGTCCAGCAGAATCCCTCAGTGTGG
AGCCAGCAGCTGTGGTGGGGAAGCAGCCTCAAGCCAGCCGGCAGCATGAAGCCTGCCTGTCCAGCCAG
CACATCTCTCTAAACTGGCTGGCCGACCTAACAGCGGGAATGTCAACAAGAAAACAAGAAAAACAA
CCAACAATGCCAATTTTAAAGAATGAAATCAAATGCCTTCCACCCTCCACCTTTAAGCAAATCCAGCA
CAGTCTCCATACGTTTAAACAGCACAATTTTGACACCCGTAAGCAACAACAATTTCTGGTTTCTCCGGAA
TCTCTGAATTTCTTACAGGAAAGACAGAAAATGGACTCAAGAAATACACCAAAAATCCTTGATGACATC
TTTGCCTCTTGGTGCAAAAAGACGACTTCTGATTTATCTAAGAGGCCTCAAGGACTAACCATCAAGC
CCAGCATTCTGGGCTTTGACACTCTCACTATTGGCTTTGTGATAATCGTTGTGTGCTTGAAGACCC
CAACAATAAGAGCAACTGGAATGTGTTAGGGAGTGTGGAACAAGGGCAGCCAGTGTGGTGTCTGGA
GTGCATCATAAATGAACTCTGAACTTTGAAAACCTGAATCCTTCAGGAAAGAGTTTGGTGAAGGAAAG
TAGACTAGTTAATGTAGGACCAATGAAATCATCACAGGAGCCACAGTAGGAGACTTCTGGGATGGATT
TGAAGATGTTCCAAATCGTTTGAAAAATGAAAAAGAACCAATGGTGTGAAACTTAAGGACTGGCCACCA
GGAGAAGATTTTAGAGATATGATGCCTTCCAGGTTTGTGATCTGATGGCCAACATTCCACTGCCCGAGT
ACACAAGGCGAGATGGCAAACCTGAATTTGGCCTTAGGCTGCCAAACTACTTTGTTCCGCCAGATCTGGG
CCCCAAGATGTATAATGCTTATGGATTAATCACTCCTGAAGATCGGAAATATGGAACAACAATCTTAC
TTAGATGTATCTGATGCAGCTAATGTATGCTATGTGGGAATCCCAAAGGACAGTGTGAGCAAGAAG
AAGAAGTCCTTAAGACCATCAAGATGGAGATTCTGACGAACTACAATAAAGCGATTTATTGAAGGAAA
AGAGAAGCCAGGAGCACTGTGGCACATATGCTGCAAAGGACACGGAGAAGATAAGGGAATTTCTTAAA
AAGGTATCAGAAGAGCAAGGTCAAGAAAACCCAGCAGACCACGATCCTATTCATGATCAAAGCTGGTATT
TAGACCGATCATTAAAGAAACGTCTTCAAGAGTATGGAGTTCAAGGCTGGGCTATTGTACAGTTTCT
TGGGGATGTGGTGTATCCCGGACAGGACTCCACATCAGGTTTCAACTTATATAGCTGCATCAAAGT
GCTGAAGATTTTGTCTCCAGAGCATGTTAAACTGCTTCTGGCTTACTCAGGAATCCGATATCTGT
CACAGACTCATACCAATCACGAAGATAAATTACAGGTGAAGAATGTTATCTACCATGCAGTGAAGATGC
AGTTGCTATGCTGAAAGCCAGTGAATCCAGTTTTGGCAAACCT

ACGCGTACGCGGCCGCTCGAGCAGAACTCATCTCAGAAGAGGATCTGGCAGCAATGATATCCTGGATT
ACAAGGATGACGACGATAAGGTTTAA

Protein Sequence: >RC215874 representing NM_018433
 Red=Cloning site Green=Tags(s)

```
MVLTLGESWPVLVGRFRLSLAADGSDGSHDSWDVERVAEWPWLSGTIRAVSHTDVTKKDLKVCVEFDGE
SWRKRRIEIVYSLRLRAFLVEHNLVLAERKSPEISERIVQWPAITYKPLLDKAGLSITSVRFLGDQQRV
FLSKDLLKPIQDVNSLRSLTDNQIVSKEFQALIVKHLDESHLLKGDKNLVGSEVKIYSLDPSTQWF SAT
VINGNPASKTLQVNCEEIPALKIVDPSLIHVEVVHDNLVTCGNSARIGAVKRKSSENNGTLVSKQAKSCS
EASPMCPVQSVPTTVFKEILLGCTAATPPSKDPRQSTPQAANSPPNLGAKIPQGCHKQSLPEEISSCL
NTKSEALRTKPDVCKAGLLSKSSQIGTGDLKILTEPKGSCTQPKTNTDQENRLESVPQALTGLPKECLPT
KASSKAELIANPPELQKHLEHAPSPSDVSNAPVKAQVNSDSPNNCSGKKEVPSALACRSQNLKESVVK
VDNESCCSRSNKIQNAPSRKSVLTDPAKLKLLQSGEAFVQDDSCVNIVAQLPKCRECLDSLKDKKEQ
QKDSPVFCRFFHFRRLQFNKHGVLVVEGFLTPNKYDNEAIGLWLPKTNVVGIDLDLDTAKYILANIGDHFC
QMVI SEKEAMSTIEPHRQVAWKRAVKGVREMCVCDTTIFNLHWVCPRCGFGVCVDCYMRKRKNCQQGAA
YKTF SWLKC VKSQIHEPENL MPTQIIPGKALYDVGDIVHSVRAKWKIKANCP CSNRQFKLFSKPASKEDL
KQTS LAGEKPTL GAVLQQNPSVLEPAAVGGEAASKPAGSMKPAC PASTSPLNWLADL TSGNVNKENKEKQ
PTMPILKNEIKLPLPPLSKSSTVLHTFNSTILTPVSNNSGFLRNLLNSSTGKTENGLKNTPKILDDI
FASLVQNKTTSDL SKRPQGLTIKPSILGFDTPHYWLCDNRLCLQDPNNKSNWNVFRECWKQGPVMVSG
VHHKLNSELWKPEFRKEFGEQEVLDVNCRTNEIITGATVGDVDFWDFEDVPNRLKNEKPMVLLKDWPP
GEDFRDMMPSRFDDL MANIPLPEYTRRDGKLNLASRLPNYVVRPDLGPKMYNAYGLITPEDRKYGTTNLH
LDVSDAANVMVYVGI PKGQCEQEEV LKTIQDGDSELT IKRFIEGKEKPGALWHIYAAKDEKIREFLK
KVSEEQGQENPADHPI HDQSWYLD RSLRKRLHQEYGVQGWAI VQFLGDVVFIPAGAPHQVHNLYSICKV
AEDFVSPEHVKHCFWL TQEFRYLSQHTNHEDKLQVKVNIYHAVKDAVAMLKASESSF GK
```

TRTRPLEQKLISEEDLAANDILDYKDDDDKV

Chromatograms: https://cdn.origene.com/chromatograms/mk6168_b02.zip

Restriction Sites: SgfI-MluI

Cloning Scheme:

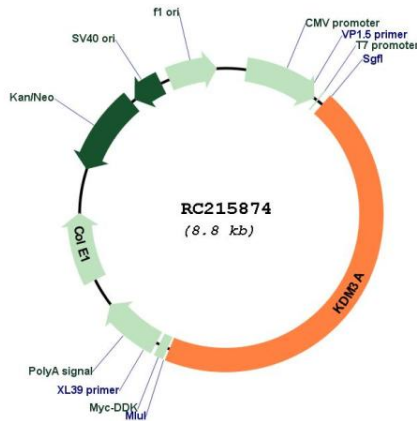


ACCN: NM_018433

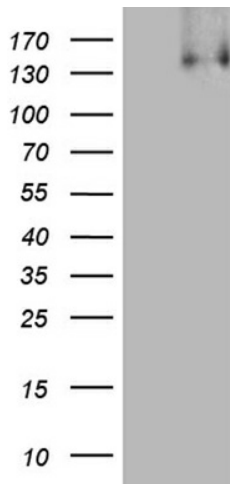
ORF Size: 3963 bp

OTI Disclaimer:	The molecular sequence of this clone aligns with the gene accession number as a point of reference only. However, individual transcript sequences of the same gene can differ through naturally occurring variations (e.g. polymorphisms), each with its own valid existence. This clone is substantially in agreement with the reference, but a complete review of all prevailing variants is recommended prior to use. More info
OTI Annotation:	This clone was engineered to express the complete ORF with an expression tag. Expression varies depending on the nature of the gene.
Components:	The ORF clone is ion-exchange column purified and shipped in a 2D barcoded Matrix tube containing 10ug of transfection-ready, dried plasmid DNA (reconstitute with 100 ul of water).
Reconstitution Method:	<ol style="list-style-type: none">1. Centrifuge at 5,000xg for 5min.2. Carefully open the tube and add 100ul of sterile water to dissolve the DNA.3. Close the tube and incubate for 10 minutes at room temperature.4. Briefly vortex the tube and then do a quick spin (less than 5000xg) to concentrate the liquid at the bottom.5. Store the suspended plasmid at -20°C. The DNA is stable for at least one year from date of shipping when stored at -20°C.
RefSeq:	NM_018433.6
RefSeq Size:	4718 bp
RefSeq ORF:	3966 bp
Locus ID:	55818
UniProt ID:	Q9Y4C1
Cytogenetics:	2p11.2
Domains:	JmjC
MW:	147.2 kDa
Gene Summary:	This gene encodes a zinc finger protein that contains a jumonji domain and may play a role in hormone-dependent transcriptional activation. Alternative splicing results in multiple transcript variants. [provided by RefSeq, Apr 2009]

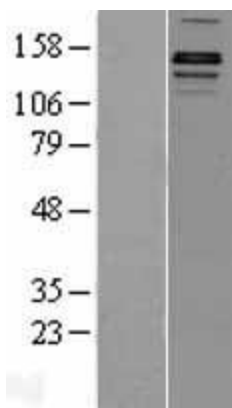
Product images:



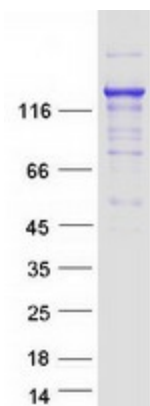
Circular map for RC215874



HEK293T cells were transfected with the pCMV6-ENTRY control (Cat# [PS100001], Left lane) or pCMV6-ENTRY KDM3A (Cat# RC215874, Right lane) cDNA for 48 hrs and lysed. Equivalent amounts of cell lysates (5 ug per lane) were separated by SDS-PAGE and immunoblotted with anti-KDM3A(Cat# [TA812138]). Positive lysates [LY402688] (100ug) and [LC402688] (20ug) can be purchased separately from OriGene.



Western blot validation of overexpression lysate (Cat# [LY432099]) using anti-DDK antibody (Cat# [TA50011-100]). Left: Cell lysates from untransfected HEK293T cells; Right: Cell lysates from HEK293T cells transfected with [RC229072] using transfection reagent MegaTran 2.0 (Cat# [TT210002]).



Coomassie blue staining of purified KDM3A protein (Cat# [TP315874]). The protein was produced from HEK293T cells transfected with KDM3A cDNA clone (Cat# RC215874) using MegaTran 2.0 (Cat# [TT210002]).