

## Product datasheet for **RC215870**

### LIPC (NM\_000236) Human Tagged ORF Clone

#### Product data:

Product Type:	Expression Plasmids
Product Name:	LIPC (NM_000236) Human Tagged ORF Clone
Tag:	Myc-DDK
Symbol:	LIPC
Synonyms:	HDLCQ12; HL; HTGL; LIPH
Mammalian Cell Selection:	Neomycin
Vector:	pCMV6-Entry (PS100001)
E. coli Selection:	Kanamycin (25 ug/mL)



[View online »](#)

**ORF Nucleotide Sequence:**

>RC215870 representing NM\_000236  
 Red=Cloning site Blue=ORF Green=Tags(s)

TTTTGTAATACGACTCACTATAGGGCGGCCGGAATTCGTCGACTGGATCCGGTACCGAGGAGATCTGCC  
 GCC**CGGATCGCC**

ATGGACACAAGTCCCCTGTGTTTCTCCATTCTGTTGGTTTTATGCATCTTTATCCAATCAAGTGCCTTG  
 GACAAAGCCTGAAACCAGAGCCATTTGGAAGAAGAGCTCAAGCTGTTGAAACAAAACAAACGCTGCATGA  
 GATGAAGACCAGATTCTGCTCTTTGGAGAAACCAATCAGGGCTGTCAGATTCAATCAATCATCCGGAC  
 ACGTTACAGGAGTGGGCTTCAACTCCTCCCTGCCTCTGGTGATGATAATCCACGGGTGGTCCGTGGACG  
 GCGTGCTAGAAAAGTGGATCTGGCAGATGGTGGCCGCGCTGAAGTCTCAGCCGGCCAGCCAGTGAACGT  
 GGGGCTGGTGGACTGGATCACCTGGCCACGACCACTACACCATCGCCGTCGCAACACCCGCCTTGTG  
 GGCAAGGAGGTCGCGCTCTTCTCCGGTGGCTGGAGGAATCTGTTCAACTCTCTCGAAGCCATGTTACC  
 TAATTGGGTACAGCCTGGGTGCACAGTGTGAGGATTTGCCGGCAGTTCATCGGTGGAACGCACAAGAT  
 TGGGAGAATCACAGGGCTGGATGCCGCGGGACCTTTGTTTGGGGAAGTGCCCCAGCAATCGTCTTTCT  
 CCAGATGATGCCAGTTTTGTGGATGCCATTCATACCTTTACCCGGGAGCAGATGGGCCTGAGCGTGGGCA  
 TCAAACAGCCCATAGGACTATGACTTCTATCCAACGGGGGCTCCTTCCAGCCTGGCTGCCACTTCTCT  
 AGAGCTCTACAGACATATTGCCAGCACGGCTTCAATGCCATCACCCAGACCATAAAATGCTCCCACGAG  
 CGATCGGTGCACCTTTTCATCGACTCCTTGTGTCACGCCGACGACGAGCATGGCCTACCCGTGTGGTG  
 ACATGAACAGCTTCAGCCAGGGCCTGTGCCTGAGCTGCAAGAAGGGCCGCTGCAACACGCTGGGCTACCA  
 CGTCCGCCAGGAGCCGCGGAGCAAGAGCAAGAGGCTCTTCTCGTAACCGGAGCCAGTCCCCCTTCAA  
 GTTTATCATTACAGTTAAAGATCCAGTTCATCAACCAAACTGAGACGCCAATACAAACAACCTTTTACCA  
 TGCTACTACTCGGAACAAAAGAGAAAATGCAGAAAATTTCCATCACTCTGGGCAAAGGAATTGCTAGTAA  
 TAAACAGTATTCCTTTCTTATCACGCTGGATGTGGATATCGGCGAGCTGATCATGATCAAGTTCAAGTGG  
 GAAAACAGTGCAGTGTGGCCAATGTCTGGGACACGGTCCAGACCATCATCCATGGAGCACAGGGCCGC  
 GCCACTCAGGCCTCGTTCTGAAGACGATCAGAGTCAAAGCAGGAGAAACCCAGCAAAGAATGACATTTTG  
 TTCAGAAAACACAGATGACCTACTTCCGCCAACCCAGGAAAAATCTTCGTGAAATGTGAAATAAAG  
 TCTAAAACATCAAAGCGAAAGATCAGA

**ACGCGT**ACGCGGCCGCTCGAGCAGAAACTCATCTCAGAAGAGGATCTGGCAGCAATGATATCCTGGATT  
 ACAAGGATGACGACGATAAGGTTTAA

**Protein Sequence:**

>RC215870 representing NM\_000236  
 Red=Cloning site Green=Tags(s)

MDTSPLCF SILLVLCIFIQSSALGQSLKPEPFGRRAQAVETNKLHEMKTRFLLFGETNQGCQIRINHPD  
 TLQECGFNSSLPLVMI IHGWSVDGVLENWIWQMVAAALKSQPAQPVNVGLVDWITLAHDHYTIAVRNTRLV  
 GKEVAALLRWLEESVQLSRSHVHLIGYSLGAHVSGFAGSSIGGTHKIGRITGLDAAGPLFEQSAPSNRLS  
 PDDASFVDAIHTFTREHMGLSVGIKQPIGHYDFYPNGGSFQPGCHFLELYRHIAQHGFNAITQTIKCSHE  
 RSVHLFIDSL LHAGTQSMAYPCGDMNSFSQGLCL SCKKGRCNTLGYHVRQEP RSKSKRFLVTRAQSPFK  
 VYHYQLKIQFINQTETPIQTFTMSLLGTKEKMQKIPITL GKGIASNKTY SFLITL DVIDIGELIMIKFKW  
 ENSAVWANVWDTVQTIIPWSTGPRHSGLV LKTI RVKAGETQQRMTFCSENTD D LLLRPTQE KIFVKCEIK  
 SKTSKRKIR

**TRTRPLEQKLI**SEEDLAANDILDYKDDDDKV

**Chromatograms:**

[https://cdn.origene.com/chromatograms/mk6158\\_e04.zip](https://cdn.origene.com/chromatograms/mk6158_e04.zip)

**Restriction Sites:**

Sgfl-Mlul

**Cloning Scheme:**


**ACCN:** NM\_000236

**ORF Size:** 1497 bp

**OTI Disclaimer:** The molecular sequence of this clone aligns with the gene accession number as a point of reference only. However, individual transcript sequences of the same gene can differ through naturally occurring variations (e.g. polymorphisms), each with its own valid existence. This clone is substantially in agreement with the reference, but a complete review of all prevailing variants is recommended prior to use. [More info](#)

**OTI Annotation:** This clone was engineered to express the complete ORF with an expression tag. Expression varies depending on the nature of the gene.

**Components:** The ORF clone is ion-exchange column purified and shipped in a 2D barcoded Matrix tube containing 10ug of transfection-ready, dried plasmid DNA (reconstitute with 100 ul of water).

**Reconstitution Method:**

1. Centrifuge at 5,000xg for 5min.
2. Carefully open the tube and add 100ul of sterile water to dissolve the DNA.
3. Close the tube and incubate for 10 minutes at room temperature.
4. Briefly vortex the tube and then do a quick spin (less than 5000xg) to concentrate the liquid at the bottom.
5. Store the suspended plasmid at -20°C. The DNA is stable for at least one year from date of shipping when stored at -20°C.

**RefSeq:** [NM\\_000236.3](#)

**RefSeq Size:** 1603 bp

**RefSeq ORF:** 1500 bp

**Locus ID:** 3990

**UniProt ID:** [P11150](#)

**Cytogenetics:** 15q21.3

**Domains:** lipase, PLAT

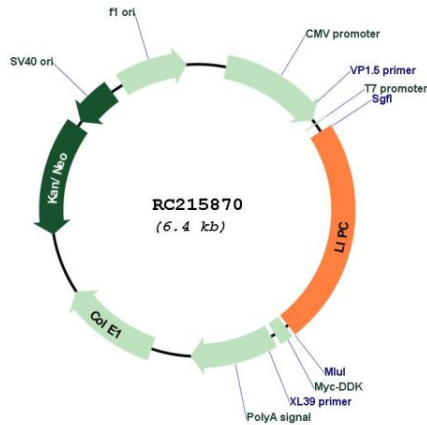
**Protein Families:** Druggable Genome, Secreted Protein

**Protein Pathways:** Glycerolipid metabolism, Metabolic pathways

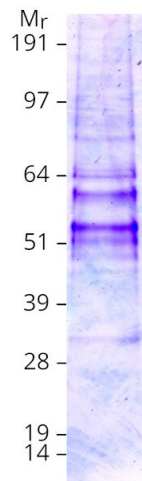
**MW:** 55.85 kDa

**Gene Summary:** LIPC encodes hepatic triglyceride lipase, which is expressed in liver. LIPC has the dual functions of triglyceride hydrolase and ligand/bridging factor for receptor-mediated lipoprotein uptake. [provided by RefSeq, Jul 2008]

**Product images:**



Circular map for RC215870



Coomassie blue staining of purified LIPC protein (Cat# [TP315870]). The protein was produced from HEK293T cells transfected with LIPC cDNA clone (Cat# RC215870) using MegaTran 2.0 (Cat# [TT210002]).