

Product datasheet for **RC215868**

FGF12 (NM_021032) Human Tagged ORF Clone

Product data:

Product Type: Expression Plasmids
Product Name: FGF12 (NM_021032) Human Tagged ORF Clone
Tag: Myc-DDK
Symbol: FGF12
Synonyms: DEE47; EIEE47; FGF12B; FHF1
Mammalian Cell Selection: Neomycin
Vector: pCMV6-Entry (PS100001)
E. coli Selection: Kanamycin (25 ug/mL)
ORF Nucleotide Sequence: >RC215868 representing NM_021032
Red=Cloning site Blue=ORF Green=Tags(s)

TTTTGTAATACGACTCACTATAGGGCGGCCGGAATTCGTCGACTGGATCCGGTACCGAGGAGATCTGCC
GCC**CGATCGCC**

ATGGCTGCGGCGATAGCCAGCTCCTTGATCCGGCAGAAGCGGCAGGCGAGGGAGTCCAACAGCGACCGAG
TGTCGGCCTCCAAGCGCCGCTCCAGCCCCAGCAAAGACGGGCGCTCCCTGTGCGAGAGGCACGTCTCGG
GGTGTTCAGCAAAGTGCCTTCTGCAGCGGCCGCAAGAGGCCGGTGAGGCGGAGACCAGAACCCAGCTC
AAAGGGATTGTGACAAGTTATTCAGCCAGCAGGGATACTTCTGCAGATGCACCCAGATGGTACCATTG
ATGGGACCAAGGACGAAAACAGCGACTACTCTCTTCAATCTAATTCCTGGTGGCCTGCGTGTAGTGGC
CATCCAAGGAGTGAAGGCTAGCCTCTATGTGGCCATGAATGGTGAAGGCTATCTCTACAGTTCAGATGTT
TCACTCCAGAATGCAAATTCAGGAATCTGTGTTTGAAGAACTACTATGTGATCTATTCTCCCACTGT
ACCGCCAGCAAGAATCAGGCCGAGCTTGGTTTCTGGGACTCAATAAAGAAGGTCAAATTATGAAGGGGAA
CAGAGTGAAGAAAACCAAGCCCTCATCACATTTGTACCGAAACCTATTGAAGTGTGTATGTACAGAGAA
CCATCGCTACATGAAATTGGAGAAAAACAAGGGCGTTCAAGGAAAAGTTCTGGAACCAACCATGAATG
GAGGCAAAGTTGTGAATCAAGATTCAACA

ACGCGTACGCGGCCGCTCGAGCAGAACTCATCTCAGAAGAGGATCTGGCAGCAAATGATATCCTGGATT
ACAAGGATGACGACGATAAGGTTTAA



[View online »](#)

Protein Sequence: >RC215868 representing NM_021032
 Red=Cloning site Green=Tags(s)

MAAAIASSLIRQKRQARENSDRVSASKRRSSPSKDGRLCERHVLGVFSKVRFCSGRKRPRVRRRPEPQL
 KGIIVTRLFSQQGYFLQMHPDGTIDGTDKENS D Y T L F N L I P V G L R V V A I Q G V K A S L Y V A M N G E G Y L Y S S D V
 FTPECKFKESVFENYYVIYSSTLYRQQESGRAWFLGLNKEGQIMKGNRVKKTTPSSHFVPKPIEVCMYRE
 PSLHEIGEKGGRSRKSSGTPTMNGGKVVNQDST

TRTRPLEQKLISEEDLAANDILDYKDDDDKV

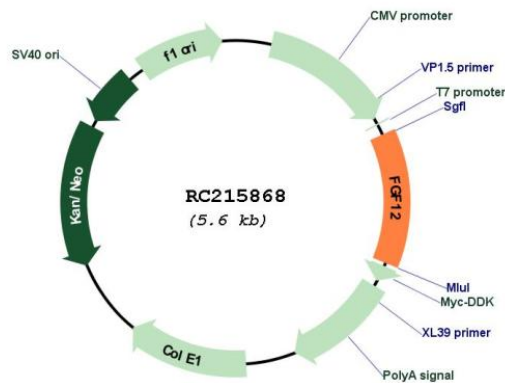
Chromatograms: https://cdn.origene.com/chromatograms/mk6475_a01.zip

Restriction Sites: SgfI-MluI

Cloning Scheme:



Plasmid Map:

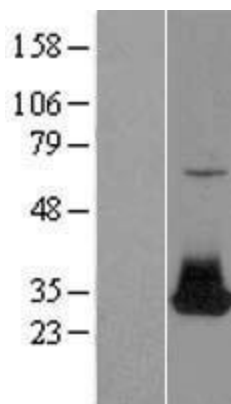


ACCN: NM_021032

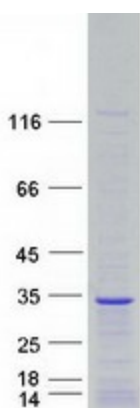
ORF Size: 729 bp

OTI Disclaimer:	The molecular sequence of this clone aligns with the gene accession number as a point of reference only. However, individual transcript sequences of the same gene can differ through naturally occurring variations (e.g. polymorphisms), each with its own valid existence. This clone is substantially in agreement with the reference, but a complete review of all prevailing variants is recommended prior to use. More info
OTI Annotation:	This clone was engineered to express the complete ORF with an expression tag. Expression varies depending on the nature of the gene.
Components:	The ORF clone is ion-exchange column purified and shipped in a 2D barcoded Matrix tube containing 10ug of transfection-ready, dried plasmid DNA (reconstitute with 100 ul of water).
Reconstitution Method:	<ol style="list-style-type: none">1. Centrifuge at 5,000xg for 5min.2. Carefully open the tube and add 100ul of sterile water to dissolve the DNA.3. Close the tube and incubate for 10 minutes at room temperature.4. Briefly vortex the tube and then do a quick spin (less than 5000xg) to concentrate the liquid at the bottom.5. Store the suspended plasmid at -20°C. The DNA is stable for at least one year from date of shipping when stored at -20°C.
RefSeq:	NM_021032.5
RefSeq Size:	2817 bp
RefSeq ORF:	732 bp
Locus ID:	2257
UniProt ID:	P61328
Cytogenetics:	3q28-q29
Domains:	FGF
Protein Families:	Secreted Protein
Protein Pathways:	MAPK signaling pathway, Melanoma, Pathways in cancer, Regulation of actin cytoskeleton
MW:	27.2 kDa
Gene Summary:	The protein encoded by this gene is a member of the fibroblast growth factor (FGF) family. FGF family members possess broad mitogenic and cell survival activities, and are involved in a variety of biological processes, including embryonic development, cell growth, morphogenesis, tissue repair, tumor growth, and invasion. This growth factor lacks the N-terminal signal sequence present in most of the FGF family members, but it contains clusters of basic residues that have been demonstrated to act as a nuclear localization signal. When transfected into mammalian cells, this protein accumulated in the nucleus, but was not secreted. The specific function of this gene has not yet been determined. [provided by RefSeq, Dec 2019]

Product images:



Western blot validation of overexpression lysate (Cat# [LY412153]) using anti-DDK antibody (Cat# [TA50011-100]). Left: Cell lysates from untransfected HEK293T cells; Right: Cell lysates from HEK293T cells transfected with RC215868 using transfection reagent MegaTran 2.0 (Cat# [TT210002]).



Coomassie blue staining of purified FGF12 protein (Cat# [TP315868]). The protein was produced from HEK293T cells transfected with FGF12 cDNA clone (Cat# RC215868) using MegaTran 2.0 (Cat# [TT210002]).