

## Product datasheet for RC215865

### UBE2NL (NM\_001012989) Human Tagged ORF Clone

#### Product data:

**Product Type:** Expression Plasmids  
**Product Name:** UBE2NL (NM\_001012989) Human Tagged ORF Clone  
**Tag:** Myc-DDK  
**Symbol:** UBE2NL  
**Synonyms:** Li174  
**Mammalian Cell Selection:** Neomycin  
**Vector:** pCMV6-Entry (PS100001)  
**E. coli Selection:** Kanamycin (25 ug/mL)  
**ORF Nucleotide Sequence:** >RC215865 representing NM\_001012989  
Red=Cloning site Blue=ORF Green=Tags(s)

TTTTGTAATACGACTCACTATAGGGCGGCCGGAATTCGTCGACTGGATCCGGTACCGAGGAGATCTGCC  
GCC**CGATCGCC**

ATGGCCGAGCTGCCCCACAGGATCATCAAGGAAACCCAGCGTTTCTGGCAGAGCCAGTTCCTGGCATCA  
AAGCAGAACCAGATGAAAGCAACGCCGTTATTTTCATGTGGTCATTGCTGGGAATCAAAGGATCCCC  
CTTTGAGGGAGGGACTTTAAACGTGAAGTATTACTTGCAGAAGAATACCAATGCCAGCCCTAAAGTA  
CGTTTCATGACCAAATTTATCATCAAATGTAGACAAGTTGAAAGAATAAGTTTAGATATTTGAAAG  
ATAAGTGGTCCCCAGCCCTGCAGATCCGCACAGTTCTGCTATCGATCCAGGCCTGTAAATGCTCCCAA  
TCCAGATGATCCATTAGCAAATGATGTAGTGGAGCAGTGAAGACCAACGAAGCCCAAGCCATTGAAACA  
GCTAGAGCATGGACTAGGCTATATGCCATGAATAGTATT

**ACGCGT**ACGCGGCCGCTCGAGCAGAACTCATCTCAGAAGAGGATCTGGCAGCAAATGATATCCTGGATT  
ACAAGGATGACGACGATAAGGTTTAA

**Protein Sequence:** >RC215865 representing NM\_001012989  
Red=Cloning site Green=Tags(s)

MAELPHRIIKETQRLLAEPVPGIKAEPDESNAFYFHVVIAGESKDSPEFGGTFKRELLLAEEYPMAAPKV  
RFMTKIYHPNVDKLERISLDILKDKWSPALQIRTVLLSIQALLNAPNDDPLANDVVEQWKNEAQAIET  
ARAWTRLYAMNSI

**TR**TRPLEQKLISEEDLAANDILDYKDDDDKV

**Chromatograms:** [https://cdn.origene.com/chromatograms/mk8028\\_b04.zip](https://cdn.origene.com/chromatograms/mk8028_b04.zip)



[View online >](#)

Restriction Sites: SgfI-MluI

Cloning Scheme:



ACCN: NM\_001012989

ORF Size: 459 bp

OTI Disclaimer: The molecular sequence of this clone aligns with the gene accession number as a point of reference only. However, individual transcript sequences of the same gene can differ through naturally occurring variations (e.g. polymorphisms), each with its own valid existence. This clone is substantially in agreement with the reference, but a complete review of all prevailing variants is recommended prior to use. [More info](#)

OTI Annotation: This clone was engineered to express the complete ORF with an expression tag. Expression varies depending on the nature of the gene.

Components: The ORF clone is ion-exchange column purified and shipped in a 2D barcoded Matrix tube containing 10ug of transfection-ready, dried plasmid DNA (reconstitute with 100 ul of water).

Reconstitution Method:

1. Centrifuge at 5,000xg for 5min.
2. Carefully open the tube and add 100ul of sterile water to dissolve the DNA.
3. Close the tube and incubate for 10 minutes at room temperature.
4. Briefly vortex the tube and then do a quick spin (less than 5000xg) to concentrate the liquid at the bottom.
5. Store the suspended plasmid at -20°C. The DNA is stable for at least one year from date of shipping when stored at -20°C.

RefSeq: [NM\\_001012989.2](#), [NP\\_001013007.1](#)

RefSeq Size: 1190 bp

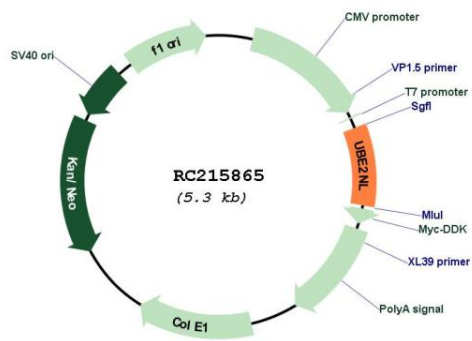
RefSeq ORF: 462 bp

Locus ID: 389898

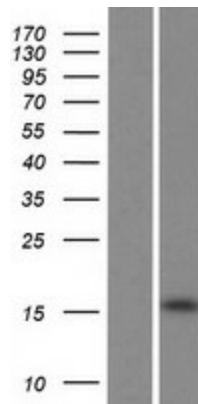
**UniProt ID:** [Q5JXB2](#)  
**Cytogenetics:** Xq27.3  
**Protein Pathways:** Ubiquitin mediated proteolysis  
**MW:** 17.2 kDa

**Gene Summary:** This gene is intronless and encodes a member of the ubiquitin-conjugating enzyme family. The protein product is 91% identical to ubiquitin-conjugating enzyme E2N, a multi-exon gene product. This locus represents a polymorphic pseudogene, where some individuals contain an allele that can encode a full-length protein, while others have a non-functional allele containing a premature stop codon (reference SNP rs237520) that truncates the coding sequence. [provided by RefSeq, Jun 2014]

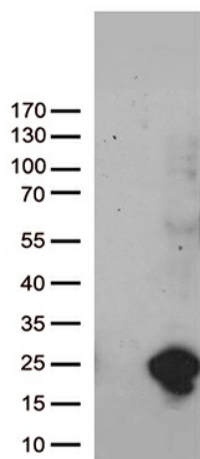
### Product images:



Circular map for RC215865



Western blot validation of overexpression lysate (Cat# [LY422948]) using anti-DDK antibody (Cat# [TA50011-100]). Left: Cell lysates from untransfected HEK293T cells; Right: Cell lysates from HEK293T cells transfected with RC215865 using transfection reagent MegaTran 2.0 (Cat# [TT210002]).



HEK293T cells were transfected with the pCMV6-ENTRY control (Cat# [PS100001], Left lane) or pCMV6-ENTRY UBE2NL (Cat# RC215865, Right lane) cDNA for 48 hrs and lysed. Equivalent amounts of cell lysates (5 ug per lane) were separated by SDS-PAGE and immunoblotted with anti-UBE2NL (Cat# [TA812448])(1:500). Positive lysates [LY422948] (100ug) and [LC422948] (20ug) can be purchased separately from OriGene.