

Product datasheet for **RC215857**

GM CSF Receptor alpha (CSF2RA) (NM_006140) Human Tagged ORF Clone

Product data:

Product Type:	Expression Plasmids
Product Name:	GM CSF Receptor alpha (CSF2RA) (NM_006140) Human Tagged ORF Clone
Tag:	Myc-DDK
Symbol:	GM CSF Receptor alpha
Synonyms:	alphaGMR; CD116; CDw116; CSF2R; CSF2RAX; CSF2RAY; CSF2RX; CSF2RY; GM-CSF-R-alpha; GMCSFR; GMCSFR-alpha; GMR; GMR-alpha; SMDP4
Mammalian Cell Selection:	Neomycin
Vector:	pCMV6-Entry (PS100001)
E. coli Selection:	Kanamycin (25 ug/mL)



[View online »](#)

ORF Nucleotide Sequence:

>RC215857 ORF sequence
 Red=Cloning site Blue=ORF Green=Tags(s)

TTTTGTAATACGACTCACTATAGGGCGGCCGGAATTCGTCGACTGGATCCGGTACCGAGGAGATCTGCC
 GCCCGCATCGCC

ATGCTTCTCCTGGTGACAAGCCTTCTGCTCTGTGAGTTACCACACCCAGCATTCTCCTGATCCCAGAGA
 AATCGGATCTGCGAACAGTGGCACCAGCCTCTAGTCTCAATGTGAGGTTTGACTCCAGGACGATGAATTT
 AAGCTGGGACTGCCAAGAAAACACAACCTTCAGCAAGTGTTCCTAACTGACAAGAAGAAGAGTCTGTG
 GAACCCAGGCTCAGTAACAACGAATGTTCTGTCACATTTCTGAAATTTGTCTGCATGAAGGAGTACAT
 TTGAGGTTACGTGAATACTAGTCAAAGAGGATTTCAACAGAACTGCTTTATCCAAATTCAGGAAGGGA
 GGGTACCCTGCTCAGAATTTCTCTGTTTCATCTACAATGCGGATTTAATGAACTGTACCTGGCGGAGG
 GGTCCGACGGCCCCCGTACGTCCAGTATTTTTGTACATACGAACTCAAAGAGAAGGAGGGAGATCC
 GGTGTCTTATTACATAAAGACTCAGGAACCCATGTGGGATGTCACCTGGATAACCTGTCAGGATTAAC
 GTCTCGCAATTACTTTCTGGTTAACGGAACCCAGCCGAGAAATGGCATCCAATTCCTTTGATTCATTTTG
 GACACAAAAGAAAATAGAAGATTCAACCTCCAGCAATGTCACCGTACGTTGCAACACGACGCACTGCC
 TCGTACGGTGAAACAGCCAGGACCTATCAGAAGCTGTCGTACCTGGACTTTCAGTACCAGCTGGACGT
 CCACAGAAAGAATACCCAGCCTGGCAGGAAAACCTACTGATTAATGTTTCTGGTGATTTGGAAAATAGA
 TACAATTTCCAAGCTCTGAGCCAGAGCAAAACAGTGTGAAGATCAGAGCTGCAGACGTCCGCATCT
 TGAATTGGAGCTCCTGGAGTGAAGCCATTGAATTTGGTTCTGACGACGGGAACCTCGGCTCTGTGTACAT
 TTATGTCTCCTAATCGTGGGAACCCCTGTCTGTGGCATCGTCTCGGCTTCTCTTTAAAAGGTTCTT
 AGGATACAGCGGCTGTTCCCGCCAGTCCACAGATCAAAGACAACTGAATGATAACCATGAGGTGGAAG
 ACGAGATCATCTGGGAGGAATTCACCCAGAGGAAGGGAAGGCTACCGCGAAGAGGTCTTGACCGTGAA
 GGAAATTACC

ACGCGTACGCGGCCGCTCGAGCAGAACTCATCTCAGAAGAGGATCTGGCAGCAATGATATCCTGGATT
 ACAAGGATGACGACGATAAGGTTTAA

Protein Sequence:

>RC215857 protein sequence
 Red=Cloning site Green=Tags(s)

MLLLVTSLLLCELPHPAFLLIPEKSDLRTVAPASSLNVRFDSTMNLSWDCQENTTFSKCFLTDKKNRVV
 EPRLSNNECSCTFREICLHEGVTFEVHVNTSQRGFQKLLYPNSGREGTAAQNFSCFIYNADLMNCTWAR
 GPTAPRDVQYFLYIRNSKRRREIRCPYYIQDSGTHVGHLDNL SGLTSRNYFLVNGTSREIGIQFFDSSL
 DTKKIERFNPPSNVTVRCNTTHCLVRWKQPRTYQKLSYLDYQYQLDVHRKNTQPGTENLLINVSVDLENR
 YNFPSSPRAKHSVKIRAADVRIILNWSWSEAIEFGSDDGNLGSVYIYVLLIVGTLVCGIIVLGLFKRFL
 RIQRLFPVPQIKDKLNDNHEVEDEIIWEEFTPEEGKGYREEVLTVKEIT

TRTRPLEQKLISEEDLAANDILDYKDDDDKV

Chromatograms:

https://cdn.origene.com/chromatograms/mk6669_a06.zip

Restriction Sites:

Sgfl-MluI

Cloning Scheme:


ACCN: NM_006140

ORF Size: 1200 bp

OTI Disclaimer: The molecular sequence of this clone aligns with the gene accession number as a point of reference only. However, individual transcript sequences of the same gene can differ through naturally occurring variations (e.g. polymorphisms), each with its own valid existence. This clone is substantially in agreement with the reference, but a complete review of all prevailing variants is recommended prior to use. [More info](#)

OTI Annotation: This clone was engineered to express the complete ORF with an expression tag. Expression varies depending on the nature of the gene.

Components: The ORF clone is ion-exchange column purified and shipped in a 2D barcoded Matrix tube containing 10ug of transfection-ready, dried plasmid DNA (reconstitute with 100 ul of water).

Reconstitution Method:

1. Centrifuge at 5,000xg for 5min.
2. Carefully open the tube and add 100ul of sterile water to dissolve the DNA.
3. Close the tube and incubate for 10 minutes at room temperature.
4. Briefly vortex the tube and then do a quick spin (less than 5000xg) to concentrate the liquid at the bottom.
5. Store the suspended plasmid at -20°C. The DNA is stable for at least one year from date of shipping when stored at -20°C.

Note: Plasmids are not sterile. For experiments where strict sterility is required, filtration with 0.22um filter is required.

RefSeq: [NM_006140.6](#)

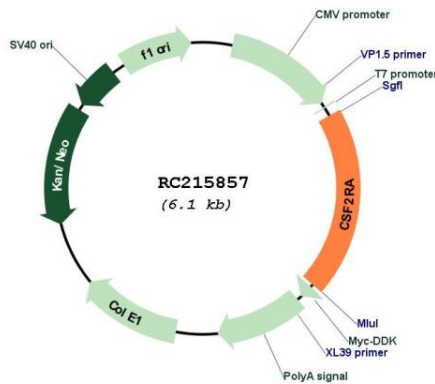
RefSeq Size: 1855 bp

RefSeq ORF: 1203 bp

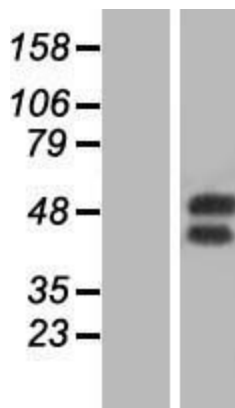
Locus ID: 1438

UniProt ID: [P15509](#)
Cytogenetics: X;Y
Protein Families: Druggable Genome, Secreted Protein, Transmembrane
Protein Pathways: Cytokine-cytokine receptor interaction, Hematopoietic cell lineage, Jak-STAT signaling pathway, Pathways in cancer
MW: 46.2 kDa
Gene Summary: The protein encoded by this gene is the alpha subunit of the heterodimeric receptor for colony stimulating factor 2, a cytokine which controls the production, differentiation, and function of granulocytes and macrophages. The encoded protein is a member of the cytokine family of receptors. This gene is found in the pseudoautosomal region (PAR) of the X and Y chromosomes. Multiple transcript variants encoding different isoforms have been found for this gene, with some of the isoforms being membrane-bound and others being soluble. [provided by RefSeq, Jul 2008]

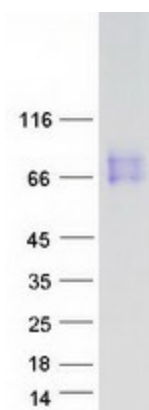
Product images:



Circular map for RC215857



Western blot validation of overexpression lysate (Cat# [LY431905]) using anti-DDK antibody (Cat# [TA50011-100]). Left: Cell lysates from untransfected HEK293T cells; Right: Cell lysates from HEK293T cells transfected with [RC228877] using transfection reagent MegaTran 2.0 (Cat# [TT210002]).



Coomassie blue staining of purified CSF2RA protein (Cat# [TP315857]). The protein was produced from HEK293T cells transfected with CSF2RA cDNA clone (Cat# RC215857) using MegaTran 2.0 (Cat# [TT210002]).