

## Product datasheet for **RC215856**

### TRPS1 (NM\_014112) Human Tagged ORF Clone

#### Product data:

**Product Type:** Expression Plasmids  
**Product Name:** TRPS1 (NM\_014112) Human Tagged ORF Clone  
**Tag:** Myc-DDK  
**Symbol:** TRPS1  
**Synonyms:** GC79; LGCR  
**Mammalian Cell Selection:** Neomycin  
**Vector:** pCMV6-Entry (PS100001)  
**E. coli Selection:** Kanamycin (25 ug/mL)  
**ORF Nucleotide Sequence:** >RC215856 representing NM\_014112  
Red=Cloning site Blue=ORF Green=Tags(s)

TTTTGTAATACGACTCACTATAGGGCGGCCGGAATTCGTCGACTGGATCCGGTACCGAGGAGATCTGCC  
 GCCCGATCGCC

ATGCCTTATGAAGTCAATGCTGGGTATGATTTTACAAATATGGTCCGAAAAAGAACCCCTCTGAGAA  
 ACGTTGCAAGTGAAGGCGAGGGCCAGATCCTGGAGCCTATAGGTACAGAAAGCAAGGTATCTGGAAAGAA  
 CAAAGAATTTTCTGCAGATCAGATGTCAGAAAAACGGATCAGAGTATGCTGCAGAACTAAATCATAAG  
 GAGGAACATAGCTTGCATGTTCAAGATCCATCTTCTAGCAGTAAAGAGGACTTGAAGCGCAGTTCTGA  
 GTGAGAAGGCTGGCTTCAATTATGAAAGCCCCAGTAAGGGAGGAACTTTCCCTCCTTCCGCATGATGA  
 GGTGACAGACAGAAATATGTTGGCTTCTCATCTCCAGCTGCTGGGGGAGTCTGTGAGCCCTTGAAGTCT  
 CCGCAAAGAGCAGAGGCAGATGACCCTCAAGATATGGCCTGCACCCCTCAGGGGACTCACTGGAGACAA  
 AGGAAGATCAGAAGATGTCACCAAAGGCTACAGAGGAAACAGGGCAAGCAGAGTGGTCAAGCCAAATTG  
 TCAAGGTTTGAAGCCAGTTTCAAGTGGCCTCAAAAAACCCACAAGTGCCTTCAGATGGGGGTGAAGACTG  
 AATAAATCCAAAAGTACTTACTGGTGAATGACAACCCAGACCCGGCACCTCTGTCTCCAGAGCTTCAGG  
 ACTTTAAATGCAATATCTGTGGATATGGTACTACGGCAACGACCCACAGATCTGATTAAGCACTTCCG  
 AAAGTATCACTTAGGACTGCATAAACCACAGGCAAGATGCTGAGCTGGACAGCAAAATCTTGGCCCTT  
 CATAACATGGTGCAGTTCAGCCATTCCAAGACTTCCAGAAGTCAACCGTTCTGTGTTTCTGGTGTGC  
 TGCAGGACATCAATTCTCAAGGCTGTTTTACTAAATGGGACCTATGATGTGCAGGTGACTTCAGGTGG  
 AACATTCAATTGGCATTGGACGAAAAACACCAGATTGCCAAGGGAACACCAAGTATTTCCGCTGTAATTC  
 TGCAATTTCACTTATATGGGCAACTCATCCACCGAATTAGAACAACATTTTCTTCAGACTCACCCAAACA  
 AAATAAAGCTTCTCTCCCTCTCTGAGGTTGCAAAACCTTCAGAGAAAACTCTAACAAGTCCATCCC  
 TGCCTTCAATCCAGTATTCTGGAGACTTGGGAAAAATGGCAGGACAAGATAACAGTCAAAGCAGGAGAT  
 GACTCTCTGTTGGTACTCAGTCCCATAAAGCCCTCGATTCTCTAGACAAAATGGTACAGAGGCCA  
 CCAGTTACTACTGGTGTAAATTTGTAGTTTCAGCTGTGAGTCATCTAGCTCACTTAACTGCTAGAACA  
 TTATGGCAAGCAGCACGGAGCAGTGCAGTCAGGCGCCCTTAATCCAGAGTAAATGATAAGCTTTCCAGG



GGCTCTGCATTAATCAGAATGATCTAGCCAAAAGTTCAGAAGGAGAGACAATGACCAAGACAGACAAGA  
GCTCGAGTGGGGCTAAAAAGAAGGACTTCTCCAGCAAGGGAGCCGAGGATAATATGGTAACGAGCTATAA  
TTGTCAAGTTCGTGACTTCCGATATCCAAAAGCCATGGCCCTGATGTAATTGTAGTGGGGCCACTTCTC  
CGTCATTATCAACAGCTCCATAACATTCACAAGTGTACCATTAAACACTGTCCATTCTGTCCCAGAGGAC  
TTTGCAGCCCAGAAAAGCACCTTGGAGAAATTACTTATCCGTTTGCTTGTAGAAAAAGTAATTGTTCCCA  
CTGTGCACTCTTGCTTCTGCACCTGTCTCCTGGGGCGGCTGGAAGCTCGGAGTCAAACATCAGTGCCAT  
CAGTGTTCAATCACCACCCCTGACGTAGTGTACTCCTCTTTCACTATGAAAGTGTGCATGAGTCCCAAG  
CATCGGATGTCAAACAAGAAGCAAATCACCTGCAAGGATCGGATGGGCAGCAGTCTGTCAAGGAAAAGCAA  
AGAACACTCATGTACCAATGTGATTTTATTACCCAAGTGAAGAAGAGATTTCCCGACACTACAGGAGA  
GCACACAGCTGCTACAAATGCCGTGAGTGCAGTTTTACAGCTGCCGATACTCAGTCACTACTGGAGCACT  
TCAACACTGTTCACTGCCAGGAACAGGACATCACTACAGCCAACGGCGAAGAGGACGGTCAATGCCATATC  
CACCATCAAAGAGGAGCCAAAATTGACTTCAGGGTCTACAATCTGCTAACTCCAGACTCTAAAATGGGA  
GAGCCAGTTTCTGAGAGTGTGGTGAAGAGAGAGAAGCTGGAAGAGAAGGACGGGCTCAAAGAAAAGTTT  
GGACCGAGAGTTCAGTGTGACCTTCGCAATGTGACTTGAGAGGGGCAGACATCCTGCGGGGAGTCC  
GTCATACACCCAAGCAAGCCTGGGGCTGCTGACGCCTGTGTCTGGCACCCAAGAGCAGACAAAGACTCTA  
AGGGATAGTCCCAATGTGGAGGCCGCCATCTGGCGCGACCTATTATGGCTTGGCTGTGAAAACCAAGG  
GATTCCTGCAGGGGGCGCCAGCTGGCGGAGAGAAGTCTGGGGCCCTCCCCAGCAGTATCCTGCATCGGG  
AGAAAACAAGTCCAAGGATGAATCCCAGTCCCTGTTACGGAGGCGTAGAGGCTCCGGTGTTTTTTGTGCC  
AATTGCCTGACCACAAAGACCTCTCTGGCGAAAAGATGCAAAATGGCGGATATGTATGCAACGCGTGTG  
GCCTCTACCAGAAGCTTCACTCGACTCCCAGGCCCTTAAACATCATTAAACAAAACAACGGTGAGCAGAT  
TATTAGGAGGAGAACAAGAAAGCGCCTTAAACCAGAGGCACTTCAGGCTGAGCAGCTCAACAAACAGCAG  
AGGGGCAGCAATGAGGAGCAAGTCAATGGAAGCCCGTTAGAGAGGAGGTCAGAAGATCATCTAACTGAAA  
GTCACCAGAGAGAAATTCACCTCCCAGCCTAAGTAAATACGAAGCCCAGGGTTCATTGACTAAAAGCCA  
TTCTGCTCAGCAGCCAGTCTGGTCAGCCAAACTCTGGATATTACAAAAGGATGCAACCTTTGCACATT  
CAGATAAAAAGTCTCAGGAAAGTACTGGAGATCCAGGAAATAGTTCATCCGTATCTGAAGGAAAAGGAA  
GTTCTGAGAGAGGCGAGTCTATAGAAAAGTACATGAGACCTGCGAAAACCCCAAATTATTACCACCAGG  
CAGCCCTATTGAAAAGTACCAGTACCCACTTTTTGGACTTCCCTTTGTACATAATGACTTCCAGAGTGAA  
GCTGATTGGCTGCGGTTCTGGAGTAAATATAAGCTCTCCGTTCTGGGAATCCGCACTACTTGAGTCACG  
TGCTGCTGCTACCAAATCCTTGCCAAAATATGTGCTTATCCCACCTTCAATCTGCCTCCTCATTTTTTC  
AGCTGTTGGATCAGACAATGACATTCTCTAGATTTGGCGATCAAGCATTCCAGACCTGGGCCAACTGCA  
AACGGTGCCTCCAAGGAGAAAACGAAGGCACCACCAAATGTA AAAAATGAAGTCCCTTGAATGTAGTAA  
AAACAGAGAAAAGTTGATAGAAGTACTCAAGATGAACTTTCAACAAAATGTGTGCACTGTGGCATTGTCTT  
TCTGGATGAAGTGTATGCTTTGCATATGAGTTGCCATGGTGACAGTGGACCTTTCCAGTGCAGCATA  
TGCCAGCATCTTTGCACGGACAAAATGACTTCACAACACATATCCAGAGGGGCTGCATAGGAACAATG  
CACAAGTGAAAAAAATGAAAAACCTAAAGAG

AGCGGACCGACGCGTACGCGGCCGCTCGAGCAGAAAATCATCTCAGAAGAGGATCTGGCAGCAAATGATATCC  
TGGATTACAAGGATGACGACGATAAGGTTTAA

Protein Sequence: >RC215856 representing NM\_014112  
 Red=Cloning site Green=Tags(s)

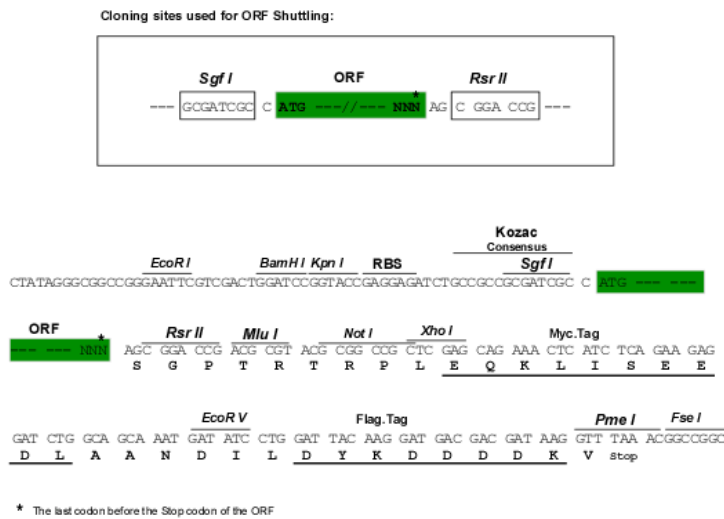
MPYEVNAGYDFTNMVRKKNPPLRNVASEGEGQILEPIGTESKVSIGNKEFSADQMSSENTDQSDAAELNHK  
 EEHSLHVQDPSSSSKDLKSAVLSEKAGFNYESPSKGGNFPSPHDEVTDRNMLAFSSPAAGGVCEPLKS  
 PQRAEADDPQDMACTPSGDSLETKEQKMSPKATEETGQAQSQANCQGLSPVSVASKNPQVPSDGGVRL  
 NKSKTDLLVNDNPDPAPLSPELQDFKCNICGYGYGNDPTDLIKHFRKYHLGLHNRTRQDAELDSKILAL  
 HNMVQFHSKDFQKVNRSVFSGLVQDINSSRPVLLNGTYDVQVTSGGTFIGIGRKTDCQGNTKYFRCKF  
 CNFTYMGNSSTELEQHFLQTHPNKIKASLPSSEVAKPSEKNSNKSIPALQSSDSGLGKWQDKITVKAGD  
 DTPVGVSVPIKPLDSSRQNGTEATSYWCKFCFSCESSSLKLEHYGKQHGAVQSGGLNPELNDKLSR  
 GSVINQNDLAKSSEGETMTKTDKSSGAKKDFSSKGAEDNMVTSYNCQFCDFRYKSHGPDVIVVGPLL  
 RHYQQLHNIHKCTIKHCPFCPRGLCSPEKHLGEITYPFACRKSNCSHCALLLHLSPGAAGSSRVKHQCH  
 QCSFTTPDVLDVLLFHYESVHESQASDVQAEANHLQSGDQGSVKEKESKCTKCDFITQVEEISRHYRR  
 AHSCYKCRQCSFTAADTQSLLEHFNTVHCQEQDITANGEEDGHAISTIKKEEPIDFRVYNLLTPDSKMG  
 EPVSESVVKREKLEEKDGLKEKVVTESSDDLNVNVTWRGADILRGSPSYTQASLGLLTPVSGTQEQTCTL  
 RDPNVEAAHLARPIYGLAVETKGLQGAPAGGEKSGALPQQYPASGENKSKDESQSLRRRRRSGVFC  
 NCLTTKTSWRKNANGGYVCNACGLYQKLHSTPRPLNIKQNGEQIIRRTRKRLNPEALQAEQLNKQQ  
 RGSNEEQVNGSPLERRSEDHLESHQREIPLPSLSKYEAQGSLSKSHSAQQPVLVSQTLDIHKRMQPLHI  
 QIKSPQESTGDPGNSSSVSEKGSSEKSPIEKYMRPAKHPNYSPPGSPIEKYQYPLFGLPFVHNDVQSE  
 ADWLRFSKYKLSVPGNPHYL SHVPGLPNPCQNYVPYPTFNLPPHFSAVGSNDIPLDLAIKHSRPGPTA  
 NGASKEKTKAPPNVKNEGPLNVVKTEKVDNRSTQDELSTKCVHCGIVFLDEVMYALHMSCHGDSGPFQCSI  
 CQHLCTDKYDFTTHIQRGLHRNNAQVEKNGKPK

SGPTRRRLEQKLI SEEDLAANDILDYKDDDDKV

Chromatograms: [https://cdn.origene.com/chromatograms/mg3883\\_c03.zip](https://cdn.origene.com/chromatograms/mg3883_c03.zip)

Restriction Sites: SgfI-RsrII

Cloning Scheme:



ACCN: NM\_014112

ORF Size: 3882 bp

**OTI Disclaimer:** Due to the inherent nature of this plasmid, standard methods to replicate additional amounts of DNA in E. coli are highly likely to result in mutations and/or rearrangements. Therefore, OriGene does not guarantee the capability to replicate this plasmid DNA. Additional amounts of DNA can be purchased from OriGene with batch-specific, full-sequence verification at a reduced cost. Please contact our customer care team at [custsupport@origene.com](mailto:custsupport@origene.com) or by calling 301.340.3188 option 3 for pricing and delivery.

The molecular sequence of this clone aligns with the gene accession number as a point of reference only. However, individual transcript sequences of the same gene can differ through naturally occurring variations (e.g. polymorphisms), each with its own valid existence. This clone is substantially in agreement with the reference, but a complete review of all prevailing variants is recommended prior to use. [More info](#)

**OTI Annotation:** This clone was engineered to express the complete ORF with an expression tag. Expression varies depending on the nature of the gene.

**Components:** The ORF clone is ion-exchange column purified and shipped in a 2D barcoded Matrix tube containing 10ug of transfection-ready, dried plasmid DNA (reconstitute with 100 ul of water).

**Reconstitution Method:**

1. Centrifuge at 5,000xg for 5min.
2. Carefully open the tube and add 100ul of sterile water to dissolve the DNA.
3. Close the tube and incubate for 10 minutes at room temperature.
4. Briefly vortex the tube and then do a quick spin (less than 5000xg) to concentrate the liquid at the bottom.
5. Store the suspended plasmid at -20°C. The DNA is stable for at least one year from date of shipping when stored at -20°C.

**RefSeq:** [NM\\_014112.5](#)

**RefSeq Size:** 9990 bp

**RefSeq ORF:** 3885 bp

**Locus ID:** 7227

**UniProt ID:** [Q9UHF7](#)

**Cytogenetics:** 8q23.3

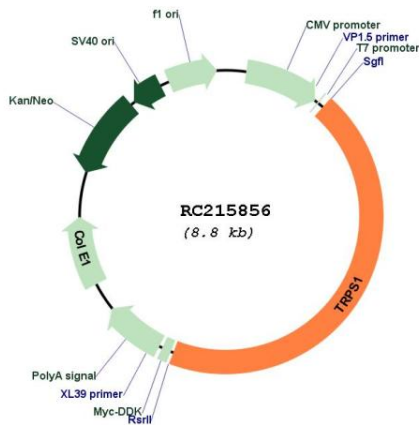
**Domains:** GATA, zf-C2H2

**Protein Families:** Druggable Genome, Transcription Factors

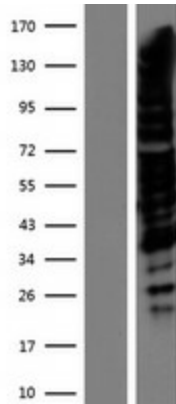
**MW:** 142.8 kDa

**Gene Summary:** This gene encodes a transcription factor that represses GATA-regulated genes and binds to a dynein light chain protein. Binding of the encoded protein to the dynein light chain protein affects binding to GATA consensus sequences and suppresses its transcriptional activity. Defects in this gene are a cause of tricho-rhino-phalangeal syndrome (TRPS) types I-III. [provided by RefSeq, Jul 2008]

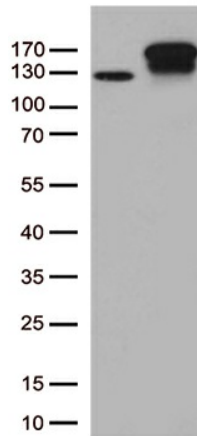
Product images:



Circular map for RC215856



Western blot validation of overexpression lysate (Cat# [LY415485]) using anti-DDK antibody (Cat# [TA50011-100]). Left: Cell lysates from untransfected HEK293T cells; Right: Cell lysates from HEK293T cells transfected with RC215856 using transfection reagent MegaTran 2.0 (Cat# [TT210002]).



HEK293T cells were transfected with the pCMV6-ENTRY control (Cat# [PS100001], Left lane) or pCMV6-ENTRY TRPS1 (Cat# RC215856, Right lane) cDNA for 48 hrs and lysed. Equivalent amounts of cell lysates (5 ug per lane) were separated by SDS-PAGE and immunoblotted with anti-TRPS1 (Cat# [TA813179])(1:500).