

## Product datasheet for **RC215855**

### RNS10 (RNASE10) (NM\_001012975) Human Tagged ORF Clone

#### Product data:

Product Type:	Expression Plasmids
Product Name:	RNS10 (RNASE10) (NM_001012975) Human Tagged ORF Clone
Tag:	Myc-DDK
Symbol:	RNS10
Synonyms:	RAH1; RNASE9
Mammalian Cell Selection:	Neomycin
Vector:	pCMV6-Entry (PS100001)
E. coli Selection:	Kanamycin (25 ug/mL)
ORF Nucleotide Sequence:	>RC215855 ORF sequence Red=Cloning site Blue=ORF Green=Tags(s)

TTTTGTAATACGACTCACTATAGGGCGCCGGGAATTCGTCGACTGGATCCGGTACCGAGGAGATCTGCC  
GCC**CGATCGCC**

ATGAAGCTGAATCTGGTGCAGATCTTTTTTCATGTTGCTGATGCTGCTGCTGGCCTGGGGATGGGCCTGG  
GGTTGGGACTTCATATGGCTACAGCAGTCTGGAGGAGAGTGATCAACCGCTCAATGAATTTTGGTCCAG  
TGACTCACAGGACAAAGCTGAGGCCACTGAGGAGGGAGACGGCACCCAAACCACAGAAACGCTGGTGCTT  
AGCAACAAAGAAGTGGTCAACCTGGCTGGCCAGAAGATCCCATCCTCGGTGAAGATGAGGTTGGGGTA  
ACAAGATGCTCAGAGCCTCAGCTCTCTTCAGAGCAACAAGACTATCTTAGGCTTGACCAGACAGATAG  
AGAATGCAATGATATGATGGCACACAAGATGAAGGAGCCAGTCAGAGTTGCATAGCCCAGTATGCATTC  
ATCCATGAGGATCTAAACACAGTCAAAGCTGTCTGTAACAGTCCTGTCTTGCCTGTGAGCTCAAGGGGG  
GAAAATGTCACAAAAGCTCCCGACCTTTTGATTTGACATTGTGCGAGCTGTCCCAACCAGACCAGGTAC  
TCCTAACTGCAATTACCTAATTCTGTTATAAAAAAGCACATTATTATAACCTGTAATGACATGAAGCGC  
CAGTTACCAACTGGACAA

**ACGCGT**ACGCGGGCCGCTCGAGCAGAAACTCATCTCAGAAGAGGATCTGGCAGCAATGATATCCTGGATT  
ACAAGGATGACGACGATAAGGTTTAA



[View online »](#)

**Protein Sequence:** >RC215855 protein sequence  
Red=Cloning site Green=Tags(s)

MKLNLVQIFFMLLMLLLGLGMGLGLGLHMATAVLEESDQPLNEFWSSDSQDKAEATEEGDGTQTTETLVL  
 SNKEVVQPGWPEDPILGEDEVGGNKMLRASALFQSNKDYLRLDQTDRECNMMAHKMKEPSQSCIAQYAF  
 IHEDLNTVKAVCNSPVIACELKGGKCHKSSRPFDLTLCELSQPDQVTPNCNYLTSVIKKHIIITCNDMKR  
 QLPTGQ

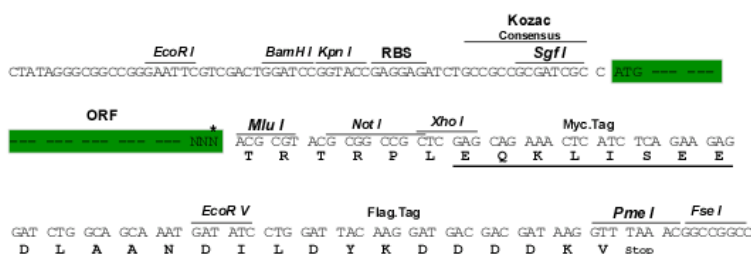
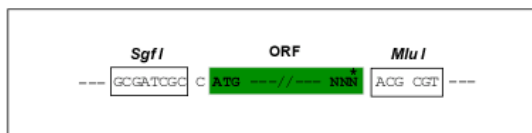
TRTRPLEQKLISEEDLANDILDYKDDDDKV

**Chromatograms:** [https://cdn.origene.com/chromatograms/mk6471\\_c06.zip](https://cdn.origene.com/chromatograms/mk6471_c06.zip)

**Restriction Sites:** SgfI-MluI

**Cloning Scheme:**

Cloning sites used for ORF Shuttling:



\* The last codon before the Stop codon of the ORF

**ACCN:** NM\_001012975

**ORF Size:** 648 bp

**OTI Disclaimer:** The molecular sequence of this clone aligns with the gene accession number as a point of reference only. However, individual transcript sequences of the same gene can differ through naturally occurring variations (e.g. polymorphisms), each with its own valid existence. This clone is substantially in agreement with the reference, but a complete review of all prevailing variants is recommended prior to use. [More info](#)

**OTI Annotation:** This clone was engineered to express the complete ORF with an expression tag. Expression varies depending on the nature of the gene.

**Components:** The ORF clone is ion-exchange column purified and shipped in a 2D barcoded Matrix tube containing 10ug of transfection-ready, dried plasmid DNA (reconstitute with 100 ul of water).

**Reconstitution Method:**

1. Centrifuge at 5,000xg for 5min.
2. Carefully open the tube and add 100ul of sterile water to dissolve the DNA.
3. Close the tube and incubate for 10 minutes at room temperature.
4. Briefly vortex the tube and then do a quick spin (less than 5000xg) to concentrate the liquid at the bottom.
5. Store the suspended plasmid at -20°C. The DNA is stable for at least one year from date of shipping when stored at -20°C.

**RefSeq:** [NM\\_001012975.2](#)

**RefSeq Size:** 651 bp

**RefSeq ORF:** 651 bp

**Locus ID:** 338879

**UniProt ID:** [Q5GAN6](#)

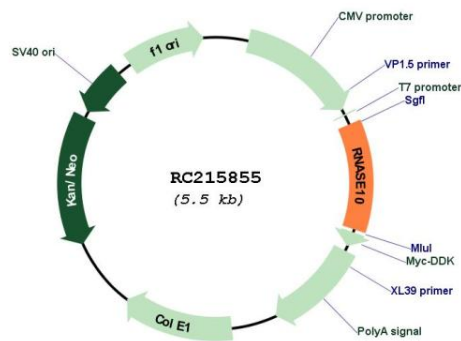
**Cytogenetics:** 14q11.2

**Protein Families:** Secreted Protein, Transmembrane

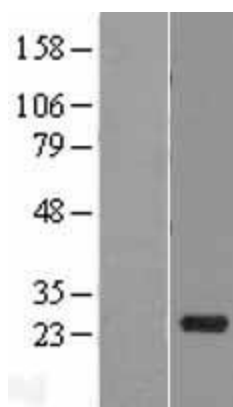
**MW:** 24 kDa

**Gene Summary:** Secreted proximal epididymal protein required for post-testicular sperm maturation and male fertility. May be involved in sperm adhesion to the egg zona pellucida. Does not have ribonuclease activity (By similarity).[UniProtKB/Swiss-Prot Function]

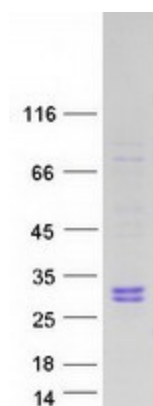
## Product images:



Circular map for RC215855



Western blot validation of overexpression lysate (Cat# [LY422938]) using anti-DDK antibody (Cat# [TA50011-100]). Left: Cell lysates from untransfected HEK293T cells; Right: Cell lysates from HEK293T cells transfected with RC215855 using transfection reagent MegaTran 2.0 (Cat# [TT210002]).



Coomassie blue staining of purified RNASE10 protein (Cat# [TP315855]). The protein was produced from HEK293T cells transfected with RNASE10 cDNA clone (Cat# RC215855) using MegaTran 2.0 (Cat# [TT210002]).