

Product datasheet for **RC215851**

PTPH1 (PTPN3) (NM_002829) Human Tagged ORF Clone

Product data:

Product Type:	Expression Plasmids
Product Name:	PTPH1 (PTPN3) (NM_002829) Human Tagged ORF Clone
Tag:	Myc-DDK
Symbol:	PTPH1
Synonyms:	PTP-H1; PTPH1
Mammalian Cell Selection:	Neomycin
Vector:	pCMV6-Entry (PS100001)
E. coli Selection:	Kanamycin (25 ug/mL)



[View online »](#)

ORF Nucleotide Sequence:

>RC215851 representing NM_002829
 Red=Cloning site Blue=ORF Green=Tags(s)

TTTTGTAATACGACTCACTATAGGGCGGCCGGAATTCGTGACTGGATCCGGTACCGAGGAGATCTGCC
 GCC**CGGATCGCC**

ATGACCTCCCGTTACGTGCGTTGGGTGGAAGAATTAATAATATACGCACCTCGGAGTTACCCAAAGAGA
 AAACCTCGATCAGAAGTCATTTGCAGCATCCAATTTTTAGATGGCGTGGTACAGACCTTTAAAGTTACTAA
 ACAAGACACTGGCCAGGTTCTTCTGGATATGGTGACACAACCACCTGGGTGTGACTGAAAAGGAATTTTT
 GGTTTACAGCATGATGACGACTCCGTGGACTCTCCTAGATGGCTGGAAGCAAGCAAACCCATCAGGAAGC
 AGTTAAAAGGAGGTTTCCCCTGTACCCTGCATTTTCGAGTAAGATTTTTTATACCTGATCCCAACACACT
 GCAGCAAGAACAACCAGGCACCTGTATTTCTTACAACCTGAAGATGGATATTTGCGAAGGAAGGTTAACC
 TGCCCTCTAACTCAGCAGTGGTCTAGCGTCTATGCCGTACAATCTCATTGGAGACTATAATTCTT
 CCATACATCATCCAGGCTATCTTCCGATAGTCACCTTTATACCCGATCAAAATGAGGACTTTTTAACAA
 AGTCGAATCTCTGCATGAGCAGCACAGTGGGCTAAAACAATCAGAAGCAGAATCTGCTATATCAACATA
 GCGCGGACCCCTCGACTTCTATGGAGTAGAAGTGCACAGTGGTAGGGATCTGCACAATTTAGACCTAATGA
 TTGGAATTGCTTCCGCGGGTGTGCTGTGTACCGAAAATACATTTGCACAAGTTTCTATCCTTGGGTGAA
 CATTCTCAAAATTTCTTTCAAAAGGAAAAAGTTTTCATACATCAGCGACAGAAACAGGCTGAATCCAGG
 GAACATATTGGGCCCTTCAACATGCTGAATTACCGATCTTGCAAAAACCTTGCGAAATCTGTGTTGAGC
 ACCATACGTTCTTTCAGGCAAAGAAGCTACTACCTCAGGAAAAGAATGTTCTGTCTCAGTACTGGACTAT
 GGGCTCTCGAACACCAAAAAGTCGGTAAATAACCAATATTGCAAAAAGGTGATTGGCGGGATGGTGTGG
 AACCCAGCCATGCGGAGATCCTTATCAGTGGAGCACTTAGAAACCAAGAGTCTGCCTTCTCGTCCCTC
 CCATTACTCCCAACTGGCGAAGTCTCGGCTCCGGCAGAAATCCGAAAGCCACGCCACTTCTGCAGA
 TAACCTTGCAAAATGAAATGACCTACATCACGGAACGGAAGATGATTTTTACACGTACAAGGGCTCTCTG
 GCCCTCAAGACAGGATTCTGAAGTTTCTCAGAACCGAAGCCCGCACCAAGAGAGTTTATCCGAGAACA
 ATCCGGCACAAAGCTACCTGACCAGAAGTCATCCAGTTCTGTGTCTCCATCTTCAAATGCTCCAGGCTC
 CTGCTCACCTGACGGCGTTGATCAGCAGCTCTTAGATGACTTCCACAGGGTGACCAAAGGGGCTCCACC
 GAGGACGCCAGCCAGTACTACTGTGACAAGAATGATAATGGTGACAGCTACTTAGTCTTGATCCGTATCA
 CACCAGATGAAGATGGAAAATTTGGATTAATCTTAAGGGAGGAGTGGATCAAAGATGCCTCTTGTTGGT
 ATCAAGGATAAACCCAGAGTCACCTGCGGACACCTGCATTCTAAGCTGAACGAAGGGGATCAAATCGTG
 TTAATCAATGGCCGGGACATCTCAGAACACACGCATGACCAAGTGGTGTGTTTCATCAAAGCCAGCCGGG
 AGTCCCACCTCACGGGAGCTGGCCCTGGTGTATCAGGAGGAGAGCTGTCCGCTCATTGCTGACTTCAAGTC
 TGAAGATGAAGTGAACAGCTTTTCCCCGAAGCCATTTCCCCATGTGTCCGGAGGGTGGGGACACTTTG
 GAGGGATCCATGGCACAGCTAAAGAAGGGCCTCGAAAAGCGGGACGGTGTGATCCAGTTTGGCAACTCT
 ACAGAAAAAGCCAGGTTTGGCCATCACGTTTGCAAAAGCTGCCTCAAAATTTGGACAAAAACCGATATA
 AGATGTGCTGCCTTATGACACCACCCGGTATTATTGCAGGAAATGAAGATTATATTAATGCAAGTTAC
 GTGAACATGGAAATTCCTGCTGCTAACCTTGTGAACAAGTACATCGCCACTCAGGGGCCCTGCCGATA
 CCTGTGCACAGTTTTGGCAGTTGTCTGGATCAGAAGTTGTCACTCATTGTGATGTTGACGACTCTCAC
 AGAACGAGGGCGGACCAAATGTCACCACTACTGGCCAGATCCCCCGACGTCATGAACACGGCCGCTTT
 CACATCCAGTGTGATCAGAGGACTGCACCATCGCCTATGTGTCCGAGAAATGCTGGTCAAAACACCC
 AGACCGGGGAAGAACACACAGTGACACATCTCCAGTACGTGCGATGGCCTGACCACGGTGTGCCGATGA
 CTCTCCGACTTTCTGGAATTTGTAACACTATGTGAGGTCTCTGAGAGTGGACAGCGAGCCCGTCTAGTT
 CACTGCAGTGTGGAATAGGTGCAACCGGTGTGTTGGTCACTATGGAAACAGCCATGTGCCTAACTGAGA
 GGAACCTGCCATTTACCCACTGGATATTGTCCGAAAAATGCGAGACCAGCGCCATGATGGTGCAGAC
 ATCAAGCCAGTACAAGTTTGTGTGAAGCGATTCTTCGTGTGTGAAGAAGGTTTAGTCCAAATGCTG
 GATCCTAGT

ACGCGTACGCGGCCGCTCGAGCAGAAACTCATCTCAGAAGAGGATCTGGCAGCAAATGATATCCTGGATT
 ACAAGGATGACGACGATAAGGTTTAA

Protein Sequence: >RC215851 representing NM_002829
 Red=Cloning site Green=Tags(s)

MTSRLRALGGRINNIRTSELPKEKTRSEVICSIHFLDGVVQTFKVKQDTGQVLLDMVHNHLGVTEKEYF
 GLQHDDSDVSPRWLEASKPIRKQLKGGFPCTLHFRVRFIPDPNTLQQEQTRHLYFLQLKMDICEGRLT
 CPLNSAVVLASYAVQSHFGDYNSSIHPGYLSDSHFIPDQNEFLTKVESLHEQHSGLKQSEAESCYNINI
 ARTLDFYGVVELHSGRDLHNLDMIGIASAGVAVYRKYICTSFYPWVNILKISFKRKKFFIHQRKQAESR
 EHIVAFNMLNYRSCNWLKSCVEHHTFFQAKLLPQEKNVLSQYWTMGSRNKTKSVNNQYCKKVIIGMVW
 NPAMRRSLSVEHLETKSLPSRSPPIIPNWRSPRLRHEIRKPRHSSADNLANEMTYITETEDVFYTYKGS
 APQDSDSEVSQNRSPHQESLSENNPAQSYLTQKSSSSVSPSSNAPGSCSPDGVDQQLDDFHRVTKGGST
 EDASQYYCDKNDNGSYLVLIRITPDEDGKFGFNLKGGVDQKMPVVSRINPESPADTCIPKLNEDQIV
 LINGRDISEHTHDQVVMFIKASRESHSRELALVIRRRAVRSFADFKSEDELNQLFPEAIFPMCPEGGDTL
 EGSMAQLKKGLESGTVLIQFEQLYRKKPGLAITFAKLPQNLKKNRYKDVLPYDTRVLLQGNEDYINASY
 VNMEIPAANLVNKYIATQGPLHTCAQFWQVVDQKLSLIVMLTTLTERGRTKCHQYWPDPDMVNHGGF
 HIQCQSEDCTIAYVSREMLVTNTQTGEEHTVTHLQYVAWPDHGVDDSSDFLEFVNYVRSRLVDSEPVLV
 HCSAGIGRTGVLVTMETAMCLTERNLPIYPLDIVRKMQRAMMVQTSSQYKFVCEAILRVYEEGLVQML
 DPS

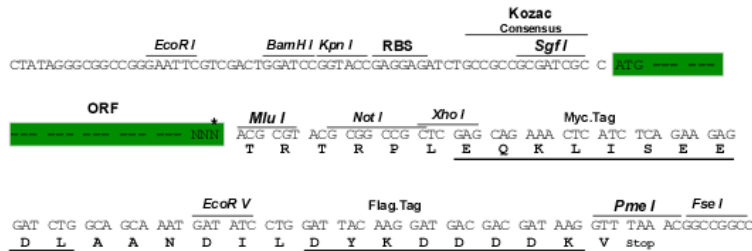
TRTRPLEQKLISEEDLAANDILDYKDDDDKV

Chromatograms: https://cdn.origene.com/chromatograms/mk6162_h07.zip

Restriction Sites: SgfI-MluI

Cloning Scheme:

Cloning sites used for ORF Shuttling:



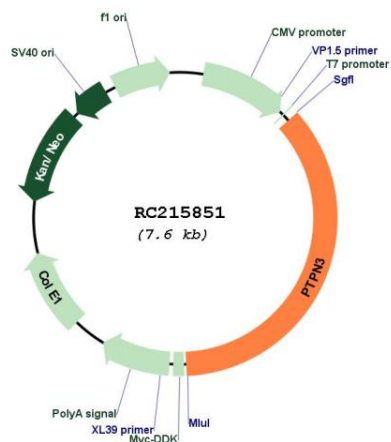
* The last codon before the Stop codon of the ORF

ACCN: NM_002829

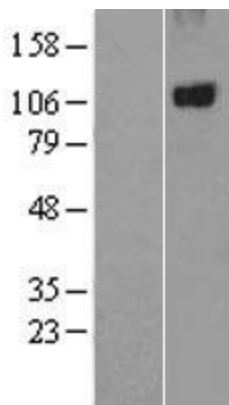
ORF Size: 2739 bp

OTI Disclaimer:	The molecular sequence of this clone aligns with the gene accession number as a point of reference only. However, individual transcript sequences of the same gene can differ through naturally occurring variations (e.g. polymorphisms), each with its own valid existence. This clone is substantially in agreement with the reference, but a complete review of all prevailing variants is recommended prior to use. More info
OTI Annotation:	This clone was engineered to express the complete ORF with an expression tag. Expression varies depending on the nature of the gene.
Components:	The ORF clone is ion-exchange column purified and shipped in a 2D barcoded Matrix tube containing 10ug of transfection-ready, dried plasmid DNA (reconstitute with 100 ul of water).
Reconstitution Method:	<ol style="list-style-type: none">1. Centrifuge at 5,000xg for 5min.2. Carefully open the tube and add 100ul of sterile water to dissolve the DNA.3. Close the tube and incubate for 10 minutes at room temperature.4. Briefly vortex the tube and then do a quick spin (less than 5000xg) to concentrate the liquid at the bottom.5. Store the suspended plasmid at -20°C. The DNA is stable for at least one year from date of shipping when stored at -20°C.
RefSeq:	NM_002829.4
RefSeq Size:	4104 bp
RefSeq ORF:	2742 bp
Locus ID:	5774
UniProt ID:	P26045
Cytogenetics:	9q31.3
Domains:	Y_phosphatase, B41, PDZ, PTPc_motif
Protein Families:	Druggable Genome, Phosphatase
MW:	103.8 kDa
Gene Summary:	The protein encoded by this gene is a member of the protein tyrosine phosphatase (PTP) family. PTPs are known to be signaling molecules that regulate a variety of cellular processes including cell growth, differentiation, mitotic cycle, and oncogenic transformation. This protein contains a C-terminal PTP domain and an N-terminal domain homologous to the band 4.1 superfamily of cytoskeletal-associated proteins. P97, a cell cycle regulator involved in a variety of membrane related functions, has been shown to be a substrate of this PTP. This PTP was also found to interact with, and be regulated by adaptor protein 14-3-3 beta. Several alternatively spliced transcript variants encoding different isoforms have been found for this gene. [provided by RefSeq, Feb 2009]

Product images:



Circular map for RC215851



Western blot validation of overexpression lysate (Cat# [LY401006]) using anti-DDK antibody (Cat# [TA50011-100]). Left: Cell lysates from untransfected HEK293T cells; Right: Cell lysates from HEK293T cells transfected with RC215851 using transfection reagent MegaTran 2.0 (Cat# [TT210002]).