

Product datasheet for RC215850

RAET1L (NM_130900) Human Tagged ORF Clone

Product data:

Product Type: Expression Plasmids
Product Name: RAET1L (NM_130900) Human Tagged ORF Clone
Tag: Myc-DDK
Symbol: RAET1L
Synonyms: ULBP6
Mammalian Cell Selection: Neomycin
Vector: pCMV6-Entry (PS100001)
E. coli Selection: Kanamycin (25 ug/mL)
ORF Nucleotide Sequence: >RC215850 representing NM_130900.
Blue=ORF Red=Cloning site Green=Tag(s)

```
GCTCGTTTGTAGTAACCGTCAGAATTTTGTAAACGACTACTATAGGGCGCCGGGAATTCGTCGACTG
GATCCGGTACCGAGGAGATCTGCCGCCGCGATCGCC
ATGGCAGCAGCCGCCATCCCAGCTTTGCTTCTGTGCCTCCCGCTTCTGTTCTGTCTGTTCCGGCTGGTCC
CGGGCTAGGCGAGACGCCCTCACTCTCTTTGCTATGACATCACCGTCATCCCTAAGTTCAGACCTGGA
CCACGGTGGTGTGCGGTTCAAGGCCAGGTGGATGAAAAGACTTTTCTTCACTATGACTGTGGCAACAAG
ACAGTCACACCCGTCAGTCCCCTGGGGAAGAACTAAATGTCACAATGGCCTGGAAAGCACAGAACCCA
GTACTGAGAGAGGTGGTGGACATACTTACAGCAACTGCTTGACATTCAGCTGGAGAATTACACACCC
AAGGAACCCCTCACCTGCAGGCAAGGATGTCTTGTGAGCAGAAAGCTGAAGGACACAGCAGTGGATCT
TGGCAGTTCAGTATCGATGGACAGACCTTCTACTCTTTGACTCAGAGAAGAGAATGTGGACAACGGTT
CATCCTGGAGCCAGAAAGATGAAAGAAAAGTGGGAGAATGACAAGGATGTGGCCATGTCCCTTCCATTAC
ATCTCAATGGGAGACTGCATAGGATGGCTTGAGGACTTCTTGATGGGCATGGACAGCACCCCTGGAGCCA
AGTGCAGGAGCACCCTCGCCATGTCTCAGGCACAACCAACTCAGGGCCACAGCCACCACCCTCATC
CTTTGCTGCCTCCTCATCATCTCCCCTGCTTCATCTCCCTGGCATC
ACGCGTACGCGGCCGCTCGAGCAGAACTCATCTCAGAAGAGGATCTGGCAGCAAATGATATCCTGGAT
TACAAGGATGACGACGATAAGGTTTAAACGGCCGGC
```

Protein Sequence: >Peptide sequence encoded by RC215850
Blue=ORF Red=Cloning site Green=Tag(s)

```
MAAAAIPALLLCLPLLFLFWSRARRDDPHSLCYDITVIPKFRPGRWCAVQQQVDEKTFLLHYDCGNK
TVTPVSPLGKKNVTMAWKAQNPVLRVVDILTEQLLDIQLENYTPKEPLTLQARMSCEQKAEHSSGS
WQFSIDGQTFLLFDSEKRMWTTVHPGARKMKEKWENDKDVAMSFHYISMGDCIGWLEDFLMGMDSTLEP
SAGAPLAMSSGTTQLRATATLILCCLLIILPCFILPGI
TRTRPLEQKLISEEDLAANDILDYKDDDDKV
```



Chromatograms: https://cdn.origene.com/chromatograms/mk8012_b01.zip

Restriction Sites: SgfI-MluI

Cloning Scheme:



ACCN: NM_130900

ORF Size: 738 bp

OTI Disclaimer: The molecular sequence of this clone aligns with the gene accession number as a point of reference only. However, individual transcript sequences of the same gene can differ through naturally occurring variations (e.g. polymorphisms), each with its own valid existence. This clone is substantially in agreement with the reference, but a complete review of all prevailing variants is recommended prior to use. [More info](#)

OTI Annotation: This clone was engineered to express the complete ORF with an expression tag. Expression varies depending on the nature of the gene.

Components: The ORF clone is ion-exchange column purified and shipped in a 2D barcoded Matrix tube containing 10ug of transfection-ready, dried plasmid DNA (reconstitute with 100 ul of water).

Reconstitution Method:

1. Centrifuge at 5,000xg for 5min.
2. Carefully open the tube and add 100ul of sterile water to dissolve the DNA.
3. Close the tube and incubate for 10 minutes at room temperature.
4. Briefly vortex the tube and then do a quick spin (less than 5000xg) to concentrate the liquid at the bottom.
5. Store the suspended plasmid at -20°C. The DNA is stable for at least one year from date of shipping when stored at -20°C.

RefSeq: [NM_130900.3](#)

RefSeq Size: 741 bp

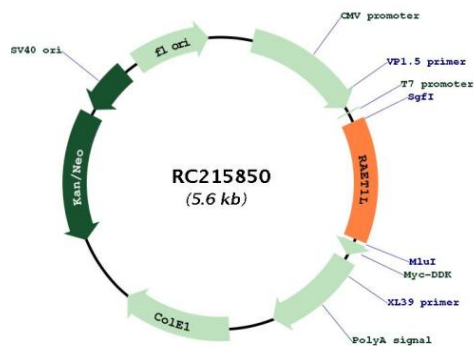
RefSeq ORF: 741 bp

Locus ID: 154064

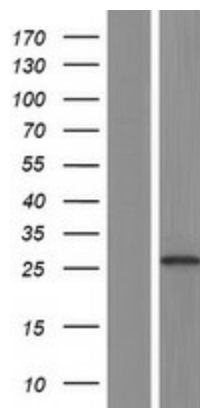
UniProt ID: [Q5VY80](#)
Cytogenetics: 6q25.1
Protein Families: Druggable Genome, Transmembrane
Protein Pathways: Natural killer cell mediated cytotoxicity
MW: 27.5 kDa

Gene Summary: RAET1L belongs to the RAET1 family of major histocompatibility complex (MHC) class I-related genes, which are located within a 180-kb cluster on chromosome 6q24.2-q25.3. The REAT1 genes encode glycoproteins that contain extracellular alpha-1 and alpha-2 domains, but they lack the membrane proximal Ig-like alpha-3 domain. Most RAET1 glycoproteins are anchored to the membrane via glycosylphosphatidylinositol (GPI) linkage (Radosavljevic et al., 2002 [PubMed 11827464]).[supplied by OMIM, Mar 2008]

Product images:



Circular map for RC215850



Western blot validation of overexpression lysate (Cat# [LY408885]) using anti-DDK antibody (Cat# [TA50011-100]). Left: Cell lysates from untransfected HEK293T cells; Right: Cell lysates from HEK293T cells transfected with RC215850 using transfection reagent MegaTran 2.0 (Cat# [TT210002]).