

Product datasheet for **RC215848**

SIGLEC15 (NM_213602) Human Tagged ORF Clone

Product data:

| | |
|---------------------------|---|
| Product Type: | Expression Plasmids |
| Product Name: | SIGLEC15 (NM_213602) Human Tagged ORF Clone |
| Tag: | Myc-DDK |
| Symbol: | SIGLEC15 |
| Synonyms: | CD33L3; HsT1361; SIGLEC-15 |
| Mammalian Cell Selection: | Neomycin |
| Vector: | pCMV6-Entry (PS100001) |
| E. coli Selection: | Kanamycin (25 ug/mL) |
| ORF Nucleotide Sequence: | >RC215848 representing NM_213602 Red=Cloning site Blue=ORF Green=Tags(s) |

TTTTGTAATACGACTCACTATAGGGCGGCCGGAATTCGTCGACTGGATCCGGTACCGAGGAGATCTGCC
GCC**CGATCGCC**

ATGAAAAGTCCATCTGGCTGCTGGCCTGCTTGGCGTGGGTTCTCCGACAGGCTCATTTGTGAGAACTA
AAATAGATACTACGAGAACTTGTCAACACAGAGGTGCACAGCTCGCCAGCGCAGCGTGGTCCATGCA
GGTGCCACCCGAGGTGAGCGGGAGGCAGGCGACGCGGCAGTGTGCCCTGCACCTTCACGCACCCGCAC
CGCCACTACGACGGCCGCTGACGGCCATCTGGCGCGGGGCGAGCCCTATGCGGGCCCGCAGGTGTTCC
GCTGCGCTGCGGGCGGGGCGAGGCTCTGCCAGACGGCGCTGAGCCTGCACGGCCGCTTCCGGCTGCT
GGGCAACCCGCGCGCAACGACCTCTCGCTGCGGTCGAGCGCCTCGCCCTGGCTGACGACCGCCGCTAC
TTCTGCCGCGTCGAGTTCGCCGGCGACGTCATGACCGCTACGAGAGCCGCCACGGCGTCCGGCTGCACG
TGACAGCCGCGCGCGGATCGTCAACATCTCGGTGCTGCCAGTCCGGCTCACGCCTTCCGCGCGCTCTG
CACTGCCGAAGGGGAGCCGCCGCCCGCCCTCGCCTGGTCCGGCCCGCCCTGGGCAACAGCTTGGCAGCC
GTGCGGAGCCCGGTGAGGGTCACGGCCACCTAGTGACCGCCGAAGTCCCGCACTGACCCATGACGGCC
GCTACACGTGTACGGCCCAACAGCCTGGGCCGCTCCGAGGCCAGCGTCTACCTGTTCCGCTTCCATGG
CGCCAGCGGGGCTCGACGGTCCGCTCCTGCTCGGCGCTCTCGGCTTCAAGGCGCTGCTGCTCGGG
GTCTTGGCGCCCGCGCTGCCCGCGCCGCCAGAGCATCTGGACACCCGGACACACCACCGGTCCC
AGGCCAGGAGTCCAATTATGAAAATTTGAGCCAGATGAACCCCGGAGCCACCAGCCACCATGTGCTC
ACCG

ACGCGTACGCGGCCGCTCGAGCAGAACTCATCTCAGAAGAGGATCTGGCAGCAAATGATATCCTGGATT
ACAAGGATGACGACGATAAGGTTTAA



[View online »](#)

Protein Sequence: >RC215848 representing NM_213602
Red=Cloning site Green=Tags(s)

MEKSIWLLACLAWVLP TGSFVRTKIDTTENLLNTEVHSSPAQRWSMQVPPEVSAEAGDAAVLPCTFTHPH
 RHYDGPLTAIWRAGEPYAGPQVFRCAAARGSEL CQTALSLHGRFRLLGNPRRNDLSLRVERLALADDRRY
 FCRVEFAGDVH DRYESRHGVRLHVTAAPRIVNISVLPSPAHAFRALCTAEGEPPPALAWSGPALGNLAA
 VRSPREGHGLVTAELPALTHDGRYTCTAANSLGRSEASVYLF R FHGASGASTVALLLGALGFKALLLLG
 VLAARAARRRPEHL DTPDTPPRSQAQESNYENLSQMNRSPPTMCS P

TRTRPLEQKLISEEDLAANDILDYKDDDDKV

Chromatograms: https://cdn.origene.com/chromatograms/mk6100_d02.zip

Restriction Sites: SgfI-MluI

Cloning Scheme:



ACCN: NM_213602

ORF Size: 984 bp

OTI Disclaimer: The molecular sequence of this clone aligns with the gene accession number as a point of reference only. However, individual transcript sequences of the same gene can differ through naturally occurring variations (e.g. polymorphisms), each with its own valid existence. This clone is substantially in agreement with the reference, but a complete review of all prevailing variants is recommended prior to use. [More info](#)

OTI Annotation: This clone was engineered to express the complete ORF with an expression tag. Expression varies depending on the nature of the gene.

Components: The ORF clone is ion-exchange column purified and shipped in a 2D barcoded Matrix tube containing 10ug of transfection-ready, dried plasmid DNA (reconstitute with 100 ul of water).

Reconstitution Method:

1. Centrifuge at 5,000xg for 5min.
2. Carefully open the tube and add 100ul of sterile water to dissolve the DNA.
3. Close the tube and incubate for 10 minutes at room temperature.
4. Briefly vortex the tube and then do a quick spin (less than 5000xg) to concentrate the liquid at the bottom.
5. Store the suspended plasmid at -20°C. The DNA is stable for at least one year from date of shipping when stored at -20°C.

RefSeq: [NM_213602.3](#)

RefSeq Size: 1523 bp

RefSeq ORF: 987 bp

Locus ID: 284266

UniProt ID: [Q6ZMC9](#)

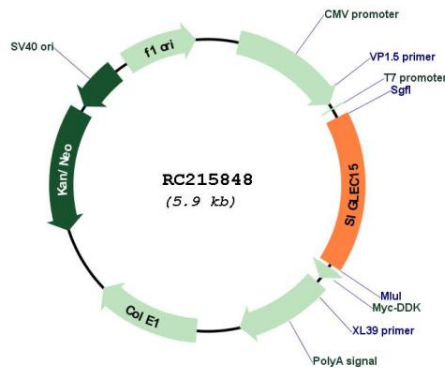
Cytogenetics: 18q12.3

Protein Families: Transmembrane

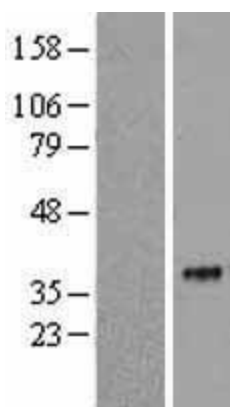
MW: 35.5 kDa

Gene Summary: Binds sialylated glycoproteins.[UniProtKB/Swiss-Prot Function]

Product images:



Circular map for RC215848



Western blot validation of overexpression lysate (Cat# [LY403725]) using anti-DDK antibody (Cat# [TA50011-100]). Left: Cell lysates from untransfected HEK293T cells; Right: Cell lysates from HEK293T cells transfected with RC215848 using transfection reagent MegaTran 2.0 (Cat# [TT210002]).