

Product datasheet for **RC215836**

STAT3 (NM_139276) Human Tagged ORF Clone

Product data:

Product Type:	Expression Plasmids
Product Name:	STAT3 (NM_139276) Human Tagged ORF Clone
Tag:	Myc-DDK
Symbol:	STAT3
Synonyms:	ADMIO; ADMIO1; APRF; HIES
Mammalian Cell Selection:	Neomycin
Vector:	pCMV6-Entry (PS100001)
E. coli Selection:	Kanamycin (25 ug/mL)



[View online »](#)

**ORF Nucleotide
Sequence:**

>RC215836 representing NM_139276
 Red=Cloning site Blue=ORF Green=Tags(s)

TTTTGTAATACGACTCACTATAGGGCGGCCGGAATTCGTGACTGGATCCGGTACCGAGGAGATCTGCC
 GCC**CGGATCGCC**

ATGGCCCAATGGAATCAGCTACAGCAGCTTGACACACGGTACCTGGAGCAGCTCCATCAGCTCTACAGTG
 ACAGCTTCCCAATGGAGCTGCGGCAGTTTCTGGCCCTTGGATTGAGAGTCAAGATTGGGCATATGCGGC
 CAGCAAAGAATCACATGCCACTTTGGTGTTCATAATCTCCTGGGAGAGATTGACCAGCAGTATAGCCGC
 TTCCTGCAAGAGTCGAATGTTCTCTATCAGCACAATCTACGAAGAATCAAGCAGTTTCTTCAGAGCAGGT
 ATCTTGAGAAGCCAATGGAGATTGCCCGGATTGTGGCCCGTGCCTGTGGGAAGAATCACGCCTTCTACA
 GACTGCAGCCACTGCGGCCAGCAAGGGGGCCAGGCCAACCCCCACAGCAGCCGTGGTACGGAGAAG
 CAGCAGATGCTGGAGCAGCACCTCAGGATGTCCGGAAGAGAGTGCAGGATCTAGAACAGAAAATGAAAG
 TGGTAGAGAATCTCCAGGATGACTTTGATTTCAACTATAAAACCCTCAAGAGTCAAGGAGACATGCAAGA
 TCTGAATGGAACAACAGTCAGTGACCAGGCAGAAGATGCAGCAGCTGGAACAGATGCTCACTGCGCTG
 GACCAGATGCGGAGAAGCATCGTGAGTGAGCTGGCGGGGCTTTTGTGACGGATGGAGTACGTGCAGAAAA
 CTCTCACGGACGAGGAGCTGGCTGACTGGAAGAGGCGGCAACAGATTGCCTGCATTGGAGGCCCGCCCAA
 CATCTGCCTAGATCGGCTAGAAAAGTGGATAACGTCATTAGCAGAATCTCAACTTCAGACCCGTCACAA
 ATTAAGAAAAGTGGAGGAGTTGCAGCAAAAAGTTTCTACAAAAGGGGACCCCATTTGACAGCACCGGCCGA
 TGCTGGAGGAGAGAATCGTGGAGCTGTTAGAAAATTAATGAAAAGTGCCTTTGTGGTGGAGCGGCAGCC
 CTGCATGCCCATGCATCTGACCGGCCCTCGTCATCAAGACCGCGTCCAGTTCCTACTAAAGTCAGG
 TTGCTGGTCAAATCCCTGAGTTGAATTATCAGCTTAAAATTAAGTGTGATTGACAAAAGACTTGGGG
 ACGTTGCAGCTCTCAGAGGATCCCGGAAATTTAACATTCTGGGCACAAACACAAAAGTGAACATGGA
 AGAATCCAACAACGGCAGCCTCTCTGCAGAATCAAACTTTGACCCTGAGGGAGCAGAGATGTGGGAAT
 GGGGGCCGAGCCAATTGTGATGCTTCCCTGATTGTGACTGAGGAGCTGCACCTGATCACCTTTGAGACCG
 AGGTGTATCACCAAGGCCTCAAGATTGACCTAGAGACCCACTCCTTGCCAGTTGTGGTGTCTCCAACAT
 CTGTCAGATGCCAAATGCCTGGGCGTCCATCCTGTGGTACAACATGCTGACCAACAATCCAAGAATGTA
 AACTTTTTTACCAAGCCCCAATTGGAACCTGGGATCAAGTGGCCGAGGTCTGAGCTGGCAGTTCTCCT
 CCACCACCAAGCGAGGACTGAGCATCGAGCAGCTGACTACACTGGCAGAGAACTCTTGGGACCTGGTGT
 GAATTATTCAGGGTGTGAGATCACATGGGCTAAATTTTGCAAAGAAAACATGGCTGGCAAGGGCTTCTCC
 TTCTGGGTCTGGCTGGACAATATCATTGACCTTGTGAAAAGTACATCCTGGCCCTTTGGAACGAAGGGT
 ACATCATGGGCTTTATCAGTAAGGAGCGGGAGCGGCCATCTTGAGCACTAAGCCTCCAGGCACCTTCTC
 GCTAAGATTCAAGTAAAGCAGCAAGAAGGAGGGTCACTTTCACTTGGGTGGAGAAGGACATCAGCGGT
 AAGACCCAGATCCAGTCCGTGGAACCATACACAAGCAGCAGCTGAACAACATGTCATTTGCTGAAATCA
 TCATGGGTATAAGATCATGGATGCTACCAATATCCTGGTGTCTCCACTGGTCTATCTCTATCCTGACAT
 TCCAAGGAGGAGGCAATTCGAAAGTATTGTGGCCAGAGAGCCAGGAGCATCCTGAAGCTGACCCAGGT
 AGCGCTGCCCCATACCTGAAGACCAAGTTTATCTGTGTGACACCAACGACCTGCAGCAATACCATTGACC
 TGCCGATGTCCCCCGCACTTTAGATTATTGATGCAGTTTGGAAATAATGGTGAAGGTGCTGAACCCCTC
 AGCAGGAGGGCAGTTTGAGTCCCTCACCTTTGACATGGAGTTGACCTCGGAGTGCCTACCTCCCCCATG

ACGCGTACGCGGCCGCTCGAGCAGAACTCATCTGTAAGAGGATCTGGCAGCAAATGATATCCTGGATT
 ACAAGGATGACGACGATAAGGTTTAA

Protein Sequence: >RC215836 representing NM_139276
 Red=Cloning site Green=Tags(s)

MAQWNQLQQLDTRYLEQLHQLYSDSFPMELRQFLAPWIESQDWAYAASKESHATLVFHNLGGEIDQQYSR
 FLQESNVLYQHNLRRIKQFLQSRYLEKPMIARIVARCLWEESRLLQTAATAAQGGQANHPTAAVVTEK
 QQMLEQHLQDVRKRVDLEQKMKVVENLQDDDFNYKTLK SQGDMQDLNGNNSVTRQKMQQLEQMLTAL
 DQMRRSIVSELAGLLSAMEYVQKTLTDEELADWKRRQQIACIGGPPNICLDRLNWTSLAESQLQTRQQ
 IKKLEELQQKVSYKGDPIVQHRPMLLEERIVELFRNLMKSAFVVERQPCMPMHPDRPLVIKTGVQFTTKVR
 LLVKFPELNYQLKIKVCIDKDSGDVAALRGRKFNILGNTKVMNMEESNNGSLSAEFKHLTLREQRGN
 GGRANCASLIVTEELHLITFETEYVHQGLKIDLETHSLPVVVISNICQMPNAWASILWYNMLTNNPKNV
 NFFTKPPIGTWDQVAEVLWQFSSTTKRGLSIEQLTTLAEKLLGPGVNYSGCQITWAKFCKENMAGKGS
 FWWLDNIIDLVKKYILALWNEGYIMGFISKERERAILSTKPPGTFLRFSESSKEGGVTFWVEKDISG
 KTQIQSVEPYTKQLNNSFAEIIIMGYKIMDATNILVSPLVYL YPDIPKEEAFGKYCRPESQEHPEADPG
 SAAPYLKTKFICVPTTCSNTIDL PMSPRTLDSL MQFGNGEGAEPSAGGQFESLTFDMELTSECATSPM

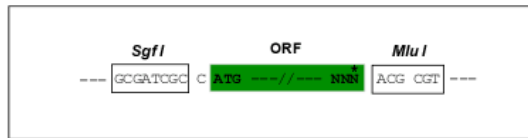
TRTRPLEQKLI SEEDLAANDILDYKDDDDKV

Chromatograms: https://cdn.origene.com/chromatograms/mk6690_g09.zip

Restriction Sites: SgfI-MluI

Cloning Scheme:

Cloning sites used for ORF Shuttling:



* The last codon before the Stop codon of the ORF

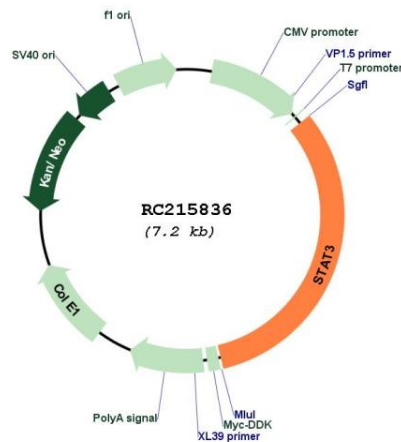
ACCN: NM_139276

ORF Size: 2310 bp

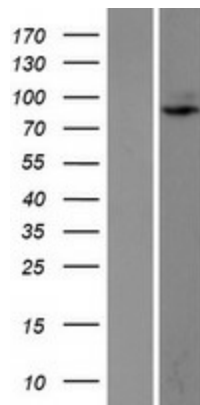
OTI Disclaimer:	Due to the inherent nature of this plasmid, standard methods to replicate additional amounts of DNA in E. coli are highly likely to result in mutations and/or rearrangements. Therefore, OriGene does not guarantee the capability to replicate this plasmid DNA. Additional amounts of DNA can be purchased from OriGene with batch-specific, full-sequence verification at a reduced cost. Please contact our customer care team at custsupport@origene.com or by calling 301.340.3188 option 3 for pricing and delivery.
	The molecular sequence of this clone aligns with the gene accession number as a point of reference only. However, individual transcript sequences of the same gene can differ through naturally occurring variations (e.g. polymorphisms), each with its own valid existence. This clone is substantially in agreement with the reference, but a complete review of all prevailing variants is recommended prior to use. More info
OTI Annotation:	This clone was engineered to express the complete ORF with an expression tag. Expression varies depending on the nature of the gene.
Components:	The ORF clone is ion-exchange column purified and shipped in a 2D barcoded Matrix tube containing 10ug of transfection-ready, dried plasmid DNA (reconstitute with 100 ul of water).
Reconstitution Method:	<ol style="list-style-type: none"> 1. Centrifuge at 5,000xg for 5min. 2. Carefully open the tube and add 100ul of sterile water to dissolve the DNA. 3. Close the tube and incubate for 10 minutes at room temperature. 4. Briefly vortex the tube and then do a quick spin (less than 5000xg) to concentrate the liquid at the bottom. 5. Store the suspended plasmid at -20°C. The DNA is stable for at least one year from date of shipping when stored at -20°C.
Note:	Plasmids are not sterile. For experiments where strict sterility is required, filtration with 0.22um filter is required.
RefSeq:	NM_139276.3
RefSeq Size:	4978 bp
RefSeq ORF:	2313 bp
Locus ID:	6774
UniProt ID:	P40763
Cytogenetics:	17q21.2
Domains:	SH2, STAT
Protein Families:	Druggable Genome, Transcription Factors
Protein Pathways:	Acute myeloid leukemia, Adipocytokine signaling pathway, Chemokine signaling pathway, Jak-STAT signaling pathway, Pancreatic cancer, Pathways in cancer
MW:	87.9 kDa

Gene Summary:

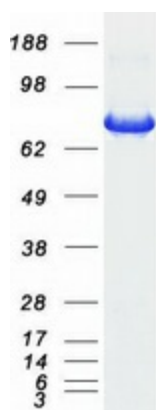
The protein encoded by this gene is a member of the STAT protein family. In response to cytokines and growth factors, STAT family members are phosphorylated by the receptor associated kinases, and then form homo- or heterodimers that translocate to the cell nucleus where they act as transcription activators. This protein is activated through phosphorylation in response to various cytokines and growth factors including IFNs, EGF, IL5, IL6, HGF, LIF and BMP2. This protein mediates the expression of a variety of genes in response to cell stimuli, and thus plays a key role in many cellular processes such as cell growth and apoptosis. The small GTPase Rac1 has been shown to bind and regulate the activity of this protein. PIAS3 protein is a specific inhibitor of this protein. This gene also plays a role in regulating host response to viral and bacterial infections. Mutations in this gene are associated with infantile-onset multisystem autoimmune disease and hyper-immunoglobulin E syndrome. [provided by RefSeq, Aug 2020]

Product images:


Circular map for RC215836



Western validation with an anti-DDK antibody * L: Control HEK293 lysate R: Over-expression lysate



Coomassie blue staining of purified STAT3 protein (Cat# [TP315836]). The protein was produced from HEK293T cells transfected with STAT3 cDNA clone (Cat# RC215836) using MegaTran 2.0 (Cat# [TT210002]).