

Product datasheet for RC215830

FUT2 (NM_001097638) Human Tagged ORF Clone

Product data:

Product Type:	Expression Plasmids
Product Name:	FUT2 (NM_001097638) Human Tagged ORF Clone
Tag:	Myc-DDK
Symbol:	FUT2
Synonyms:	B12QTL1; SE; Se2; SEC2; sej
Mammalian Cell Selection:	Neomycin
Vector:	pCMV6-Entry (PS100001)
E. coli Selection:	Kanamycin (25 ug/mL)
ORF Nucleotide Sequence:	>RC215830 representing NM_001097638 Red=Cloning site Blue=ORF Green=Tags(s)

TTTTGTAATACGACTCACTATAGGGCGCCGGGAATTCGTCGACTGGATCCGGTACCGAGGAGATCTGCC
GCC**CGATCGCC**

ATGCTGGTCGTTTCAGATGCCTTTCTCCTTTCCCATGGCCCACTTCATCCTCTTTGTCTTTACGGTTTCCA
CTATATTTACGTTTCAGCAGCGGCTAGCGAAGATTCAAGCCATGTGGGAGTTACCGGTGCAGATACCAGT
GCTAGCCTCAACATCAAAGGCACTGGGACCCAGCCAGCTCAGGGGATGTGGACGATCAATGCAATAGGC
CGCCTGGGAACAGATGGCGAGTACGCCACACTGTACGCCCTGGCCAAGATGAACGGGCGCCCGCCT
TCATCCCGGCCAGATGCACAGCACCTGGCCCCATCTCAGAATCACCTGCCGGTGTGCACAGCGC
CAGGCCAGCAGGATCCCTGGCAGAATACCACCTGAACGACTGGATGGAGGAGGAATACCGCCACATC
CCGGGGGAGTACGTCCGTTACCGGCTACCCCTGCTCCTGGACCTTACCACCACTCCGCCAGGAGA
TCCTCCAGGAGTTCACCTGCACGACCAGTGCAGGAGGAGGCCAGAAGTTCCTGCGGGGCTGCAGGT
GAACGGGAGCCGGCCGGGCACCTTTGTAGGGTCCATGTTTCGCCGAGGGGACTATGTCCATGTATGCCA
AAAGTGTGAAGGGGTTGGTGGCCGACCGGCGATACCTACAGCAGGCCCTGGACTGGTCCGAGCTCGCT
ACAGCTCCCTCATCTTCGTGGTACCAGTAATGGCATGGCCTGGTGTGGGAGAACATTGACACCTCCCA
CGGTGATGTGGTGTGGTGGCGATGGCATTGAGGGCTCACCTGCCAAAGATTTTGTCTACTCACACAG
TGTAACCACCCATCATGACCATTGGGACGTTGGGATCTGGCCGCATACCTCAGGGCGGAGACACCA
TCTACCTGGCCAATTACACCCTCCCGACTCCCTTTCTCAAATCTTTAAGCCAGAGGACGCTTCTCCT
GCCGGAGTGGACAGGATTGCCGACAGCTGTCCCTTACTCAAGCAC

ACGCGTACGCGGCCGCTCGAGCAGAACTCATCTCAGAAGAGGATCTGGCAGCAATGATATCCTGGATT
ACAAGGATGACGACGATAAGGTTTAA



[View online »](#)

Protein Sequence: >RC215830 representing NM_001097638
Red=Cloning site Green=Tags(s)

MLVVQMPFSFPMAHFILFVFTVSTIFHVQQRLAKIQAMWELPVQIPVLASTSKALGPSQLRGMWTINAIG
 RLGNQMGEYATLYALAKMNGRPAFIPAQMNSTLAPIFRITLPLVLSATASRIPWQNYHLNDWMEEEYRHI
 PGEYVRF TGYPCSWTFYHHLRQEILQEF TLHDHVREEAQKFLRGLQVNGSRPGTFVGVHVRGDYVHVMP
 KVKWGVVADRRYLQQALDWFRARYSSLIFVVT SNGMAWCRENIDTSHGDVVVFAGDGI EGSPAKDF ALLTQ
 CNHTIMTIGTFGIWAAYLTGGDTIYLANYTLPDSPFLKIFKPEAAFLPEWTGIAADL SPLLLKH

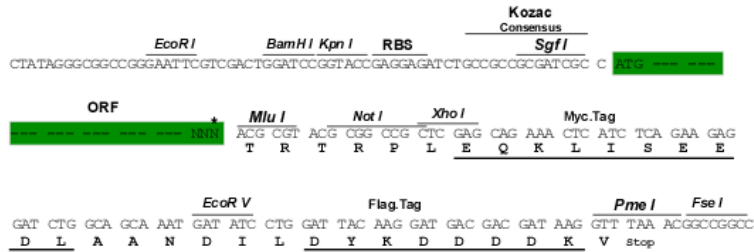
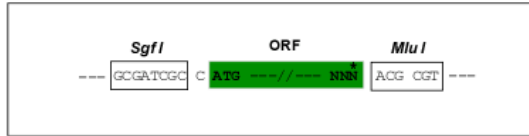
TRTRPLEQKLISEEDLAANDILDYKDDDDKV

Chromatograms: https://cdn.origene.com/chromatograms/mk6563_a09.zip

Restriction Sites: SgfI-MluI

Cloning Scheme:

Cloning sites used for ORF Shuttling:



* The last codon before the Stop codon of the ORF

ACCN: NM_001097638

ORF Size: 1029 bp

OTI Disclaimer: The molecular sequence of this clone aligns with the gene accession number as a point of reference only. However, individual transcript sequences of the same gene can differ through naturally occurring variations (e.g. polymorphisms), each with its own valid existence. This clone is substantially in agreement with the reference, but a complete review of all prevailing variants is recommended prior to use. [More info](#)

OTI Annotation: This clone was engineered to express the complete ORF with an expression tag. Expression varies depending on the nature of the gene.

Components: The ORF clone is ion-exchange column purified and shipped in a 2D barcoded Matrix tube containing 10ug of transfection-ready, dried plasmid DNA (reconstitute with 100 ul of water).

Reconstitution Method:

1. Centrifuge at 5,000xg for 5min.
2. Carefully open the tube and add 100ul of sterile water to dissolve the DNA.
3. Close the tube and incubate for 10 minutes at room temperature.
4. Briefly vortex the tube and then do a quick spin (less than 5000xg) to concentrate the liquid at the bottom.
5. Store the suspended plasmid at -20°C. The DNA is stable for at least one year from date of shipping when stored at -20°C.

RefSeq: [NM_001097638.3](#)

RefSeq Size: 3105 bp

RefSeq ORF: 1032 bp

Locus ID: 2524

UniProt ID: [Q10981](#)

Cytogenetics: 19q13.33

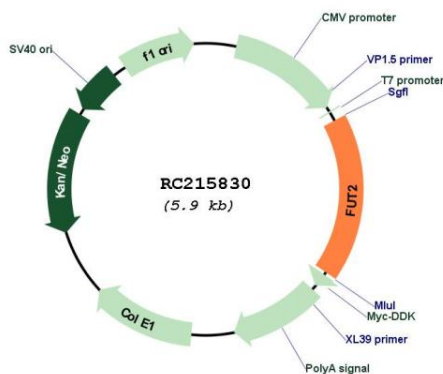
Protein Families: Druggable Genome, Transmembrane

Protein Pathways: Glycosphingolipid biosynthesis - globo series, Glycosphingolipid biosynthesis - lacto and neolacto series, Metabolic pathways

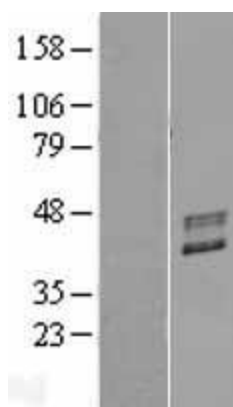
MW: 38.8 kDa

Gene Summary: The protein encoded by this gene is a Golgi stack membrane protein that is involved in the creation of a precursor of the H antigen, which is required for the final step in the soluble A and B antigen synthesis pathway. This gene is one of two encoding the galactoside 2-L-fucosyltransferase enzyme. Two transcript variants encoding the same protein have been found for this gene. [provided by RefSeq, Jul 2008]

Product images:



Circular map for RC215830



Western blot validation of overexpression lysate (Cat# [LY424669]) using anti-DDK antibody (Cat# [TA50011-100]). Left: Cell lysates from untransfected HEK293T cells; Right: Cell lysates from HEK293T cells transfected with [RC219898] using transfection reagent MegaTran 2.0 (Cat# [TT210002]).