

Product datasheet for RC215829

CNKSR2 (NM_014927) Human Tagged ORF Clone

Product data:

Product Type:	Expression Plasmids
Product Name:	CNKSR2 (NM_014927) Human Tagged ORF Clone
Tag:	Myc-DDK
Symbol:	CNKSR2
Synonyms:	CNK2; KSR2; MAGUIN; MRXSHG
Mammalian Cell Selection:	Neomycin
Vector:	pCMV6-Entry (PS100001)
E. coli Selection:	Kanamycin (25 ug/mL)
ORF Nucleotide Sequence:	>RC215829 representing NM_014927 Red=Cloning site Blue=ORF Green=Tags(s)

TTTTGTAATACGACTCACTATAGGGCGGCCGGAATTCGTCGACTGGATCCGGTACCGAGGAGATCTGCC
GCC**CGATCGCC**

ATGGCTCTGATAATGGAACCGGTGAGCAAATGGTCTCCGAGTCAAGTAGTGGACTGGATGAAAGTCTTG
ATGACTGTTTGCAGCAGTATATTAAGAAGTTTGGAGGGAGAAGATCAGTGGGGACCAGCTGCTGCGCAT
TACACATCAGGAGCTAGAAGATCTGGGGTCCAGCCGATTGGCCATCAGGAAGTATCTTGAAGCAGTT
GACCTTCTGTGTGATTGAATTATGGCTTGGAAACAGAAAATCTAAAAACCTTTCTCACAAGTTGAATG
CATCTGCCAAAAATCTGCAGAATTTTAAACAGGAAGGAGAAGGAGTGGCCATTATGATGGGAGGACCAG
CCGAAAATTGCCAACGACTTTCTGACCTCAGTTGTGGATCTGATTGGAGCAGCCAAGAGTCTGCTTGCC
TGGTTGGACAGGTCACCATTTGCTGTGACAGACTATTCAGTTACAAGAAATAATGTCATACAACCTCT
GCCTGGAGTTAACAACAATTGTGCAACAGGATTGTACTGTATATGAAACAGAGAATAAAATCTTTCACGT
GTGTAACACTCTTTCTGGAGTCTGTGACCACATCATATCCCTGTCGTCAGATCCTCTGGTTTCACAGTCT
GCTCACCTGGAAGTATTCAACTGGCAACATTAACCAAGCGAAGGGCTGGGTATGTATATTAATCTA
CATATGATGGCCTCCATGTAATTACTGGAACCACAGAAAATTCACCTGCAGATCGGTGCAAGAAAATCCA
TGCTGGCGATGAAGTATTCAAGTTAATCATCAGACTGTGGTGGGTGGCAGTTGAAAAATTTGGTGAAT
GCACTACGAGAGGACCCGAGTGGTGTATCTTAACTTTGAAAAAGCGACCTCAGAGCATGCTTACCTCAG
CACCAGCTTTACTGAAAAATATGAGATGGAAGCCCTTGCTCTGCAGCCTCTTATACCTAGAAGTCCCAC
AAGCAGCGTTGCCACGCCTTCCAGCACCATCAGTACACCCACAAAAGAGACAGTTCTGCCCTCCAGGAT
CTCTACATTTCCCCTCCTCCTGCAGAACCATATATTTCCAGGGATGAAAAAGGAAACCTTCTTGTGAAG
ACCTCAGAGGACATATGGTGGGCAAGCCAGTGCATAAGGGATCTGAATCACCAAATTCATTTCTGGATCA
GGAATATCGAAAGAGATTTAATATTGTCGAAGAAGATACTGTCTTATATTGCTATGAATATGAAAAAGGA
AGATCAAGTAGTCAAGGAAGACGAGAAAGCACCCCACTTATGGCAAGCTACGACCTATATCTATGCCAG
TGAATATAATTGGTGGGGACTATGAAGATCCAAATAAGATGAAGAGAGATAGTAGAAGAGAAAACCT
TCTACTCGGTATATGAGCAATGAAAAGATTGCTCAAGAAGAATACATGTTTCAGAGAAACGAAAAAG



[View online »](#)

GACACAGGAAGAAGTCAAAAAAGAAGGGTGATAAGAGTAATAGCCCACTCACTATTCATTGCTACCTA
 GTTTACAAATGGATGCACTGAGACAAGACATCATGGGCACTCCTGTGCCAGAGACCACACTATACCATAC
 ATTTACAGCAGTCTCACTGCAGCACAAATCAAAGAAGAAAAACAAAGGTCTATAGCAGGCAAGAGCAAA
 AGACGAATTTCTTGCAAAGATCTTGCCGTGGTACTGTGAGGGCTGGCTTTGAAAAAGAAAGATGCGA
 AGAGTTACTTTTACAGAAATGGAAAAATATTGGTTTGTCTAAAGGATGCATCCCTTTATTGGTATAT
 TAATGAGGAGGATGAAAAAGCAGAAGGATTATTAGCCTGCCTGAATTTAAAATTGATAGAGCCAGTGAA
 TGCCGCAAAAAATATGCATTCAAAGCCTGCATCCTAAAATCAAAGCTTTTATTTTGTCTGAACATC
 TTGATGATATGAACAGGTGGCTTAACAGAATTAATATGCTGACTGCAGGATATGCAGAAAGAGAGAGGAT
 TAAGCAGGAACAAGATTACTGGAGTGAGAGTGACAAGGAAGAAGCAGATACTCCATCAACACCAAAAAACA
 GATAGCCCTCCACCCCATATGATACATACCCACGACCTCCCTCGATGAGTTGCGCCAGTCTTATGTGG
 AAGCAAAACATAGCCGACTTTCTCCACGGAGACTTCTCAGTCTCAGTCTTCTCATGAGGAGTTTCGCCA
 GGAAGTAACTGGGAGCAGTGCAGTGTCTCCATTGCAAGACAGCCAGTGCAGCGCCGCTCCTGCCAGGAT
 TTAATTGAGACGCCACTGACAAGTTCAGGCTTACACTATCTTCAGACTCTGCCCTGGAGGATTCTGTCT
 TCTCTGACTCCGCGGCCATCTCCCAGAGCACAGGCGGCAGTCTACCCTGCCAACTCAGAAATGCCACT
 GCAGGATCACTATGGGCCATACCCCTTAGCTGAGAGTGAGAGGATGCAAGTGCTAAATGGAAATGGGGC
 AAGCCTCGAAGTTTTACTCTGCCTCGAGATAGCGGGTTCAACCATTGCTGTCTGAATGCTCCAGTTAGTG
 CCTGTGACCCACAGGATGACGTGAACCCCCAGAGGTGGAGGAAGAGGAGGAGGAGGAGGAGGAGGAAAGG
 GGAGGCAGCAGGGGAAAACATAGGAGAAAAAGTAAAAGCAGAGAAGAAAAGTTAGGAGACTCATTGCAA
 GATTTATACAGGGCACTGGAGCAGGCCAGTCTGTCACTAGGAGAATCGTATTTCAACCAAGATGG
 AATACAAGCTATCATTTATAAAAAGATGTAATGATCCTGTAATGAATGAAAACTACACCGGCTGAGAA
 TCTCAAAGCACTTTAAAGGCCAGAGAAGGGGAAGTAGCCATTATCGATAAAGTCTAGACAATCCAGAC
 TTGACATCTAAAGAAATCCAACAATGGAAGCAGATGTACCTCGACCTTTTCTTGGATATCTGTCAAATA
 CCACCTCAAATGACCCACTGAGTATTTCTCTGAAGTAGATGTAATCACTTCTCTAGCACACACTCA
 TCATACATTGAAACGCATGTC

ACGCGTACGCGGCCGCTCGAGCAGAACTCATCTCAGAAGAGGATCTGGCAGCAATGATATCCTGGATT
 ACAAGGATGACGACGATAAGGTTTAA

Protein Sequence:

>RC215829 representing NM_014927

Red=Cloning site Green=Tags(s)

MALIMEPVSKWSPSQVVDWMKGLDDCLQQYIKNFEREKISGDQLLRITHQELEDLGVSRIGHQELILEAV
 DLLCALNYGLETENLKTLSHKLNASAKNLQNFITGRRRSGHYDGRTRKLPNDFLTSVVDLIGAASLLA
 WLDRSPFAAVTDYSVTRNNVIQLCLELTTIVQQDCTVYETENKILHVCKTSGVCDHIISLSSDPLVSQS
 AHLEVIQLANIKPSEGLGMYIKSTYDGLHVTGTTENSPADRCKKIHAGDEVIQVNHQTVVGWQLKNLVN
 ALREDPSGVILTLKKRPQSMLTSAPALLKNMRWKPLALQPLIPRSPSSVATPSSISTPTKRDSSALQD
 LYIPPPAEPYIPRDEKGNLPCEDLRGHMVGKPVHKGSESPNSFLDQEYRKRFNIVEEDTVLYCYEYKGG
 RSSSQRRRESTPTYGKLRPISMPVEYNWVDYEDPNMKRDSRRENSLLRYMSNEKIAQEEYMFQRNSKK
 DTGKSKKKGDKSNSPTHYSLLPSLQMDALRQDIMGTPVPETTLYHTFQQSSLQHKSKKKNKGPVIAAGKSK
 RRI SCKDLGRGDCEGWLWKKDAKSYFSQWKWYWFVLKDALSYWYINEEDEKAEGFISLPEFKIDRASE
 CRKKYAFKACHPKIKSFYFAAEHLDDMNRWLNRLINMLTAGYERERIKQEYQDYSWSESDKEEADTPSPKQ
 DSPPPPYDTPRPPSMSCASPYVEAKHSRLSSTETSQSQSSHEEFRQEVTVGSSAVSPIRKASQRRSWQD
 LIETPLTSSGLHYLQTLPLEDSVFSASAISPEHRRQSTLPTQKCHLQDHYGPYPLAESERMQVLNNGG
 KPRSFTLPRDSGFNHCLNAPVSACDPQDDVQPPEVEEEEEEEEEGEAAGENIGEKSESREKLGDSLQ
 DLYRALEQASL SPLGEHRISTKMEYKLSFIKRCNDPVMNEKLHRLRILKSTLKAREGEVAIIDKVLNDNP
 LTSKEFQQWKQMYLDFLDICQNTTSDNPLSISSEVDVITSSLAHTHSYIETHV

TRTRPLEQKLI SEEDLAANDILDYKDDDDKV

Restriction Sites:

SgfI-MluI

Cloning Scheme:


ACCN: NM_014927

ORF Size: 3102 bp

OTI Disclaimer: Due to the inherent nature of this plasmid, standard methods to replicate additional amounts of DNA in E. coli are highly likely to result in mutations and/or rearrangements. Therefore, OriGene does not guarantee the capability to replicate this plasmid DNA. Additional amounts of DNA can be purchased from OriGene with batch-specific, full-sequence verification at a reduced cost. Please contact our customer care team at custsupport@origene.com or by calling 301.340.3188 option 3 for pricing and delivery.

The molecular sequence of this clone aligns with the gene accession number as a point of reference only. However, individual transcript sequences of the same gene can differ through naturally occurring variations (e.g. polymorphisms), each with its own valid existence. This clone is substantially in agreement with the reference, but a complete review of all prevailing variants is recommended prior to use. [More info](#)

OTI Annotation: This clone was engineered to express the complete ORF with an expression tag. Expression varies depending on the nature of the gene.

Components: The ORF clone is ion-exchange column purified and shipped in a 2D barcoded Matrix tube containing 10ug of transfection-ready, dried plasmid DNA (reconstitute with 100 ul of water).

Reconstitution Method:

1. Centrifuge at 5,000xg for 5min.
2. Carefully open the tube and add 100ul of sterile water to dissolve the DNA.
3. Close the tube and incubate for 10 minutes at room temperature.
4. Briefly vortex the tube and then do a quick spin (less than 5000xg) to concentrate the liquid at the bottom.
5. Store the suspended plasmid at -20°C. The DNA is stable for at least one year from date of shipping when stored at -20°C.

RefSeq: [NM_014927.5](#)

RefSeq Size: 5769 bp

RefSeq ORF: 3105 bp

Locus ID: 22866

UniProt ID: [Q8WXI2](#)

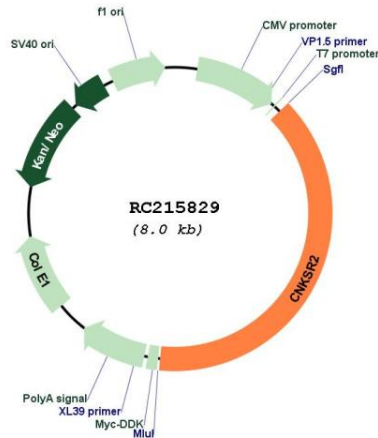
Cytogenetics: Xp22.12

Domains: PDZ, SAM, PH

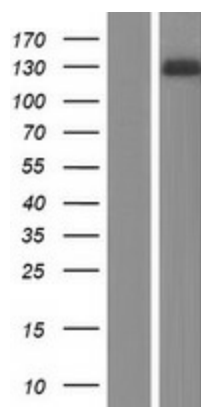
MW: 118 kDa

Gene Summary: This gene encodes a multidomain protein that functions as a scaffold protein to mediate the mitogen-activated protein kinase pathways downstream from Ras. This gene product is induced by vitamin D and inhibits apoptosis in certain cancer cells. It may also play a role in ternary complex assembly of synaptic proteins at the postsynaptic membrane and coupling of signal transduction to membrane/cytoskeletal remodeling. Multiple transcript variants encoding different isoforms have been found for this gene. [provided by RefSeq, Dec 2009]

Product images:



Circular map for RC215829



Western blot validation of overexpression lysate (Cat# [LY414934]) using anti-DDK antibody (Cat# [TA50011-100]). Left: Cell lysates from untransfected HEK293T cells; Right: Cell lysates from HEK293T cells transfected with RC215829 using transfection reagent MegaTran 2.0 (Cat# [TT210002]).