

Product datasheet for RC215823

WWC3 (NM_015691) Human Tagged ORF Clone

Product data:

Product Type:	Expression Plasmids
Product Name:	WWC3 (NM_015691) Human Tagged ORF Clone
Tag:	Myc-DDK
Symbol:	WWC3
Synonyms:	BM042
Mammalian Cell Selection:	Neomycin
Vector:	pCMV6-Entry (PS100001)
E. coli Selection:	Kanamycin (25 ug/mL)
ORF Nucleotide Sequence:	>RC215823 representing NM_015691 Red=Cloning site Blue=ORF Green=Tags(s)

TTTTGTAATACGACTCACTATAGGGCGGCCGGAATTCGTCGACTGGATCCGGTACCGAGGAGATCTGCC
GCC**CGATCGCC**

ATGGACCACATAAATAAACTTACCCAGATTGAGGATCCAAGAGAACAGTGGAGGCGAGAGCAAGAGCGCA
TGTTGAAGGAATATTTAATTGTAGCTCAGGAGGCTCTCAATGCCAAGAAAGAAATCTACCAGATTAAGCA
GCAGCGGTTTCGAGCTGGCCAGGAGGAATACCAGCAGTCACAAAATGTGTGAGGATGACAGCCGCTCG
TACGCCAGCTCATTCTGGATATCAACAAAACAAAGTATGACCCACACCAAATTAAGCAGAAATAG
CAAGTCGTGGGATAGGCTTTCCAGATTAACGAGAGCTGACCCAGATGAAGCAGGAAGTGCAGTACAA
AGAAAAGGGGTTGGAGACCTGCAAGAGATTGATCGGAAGATGTCAAGTACTCACACCAGCTACAACTG
GATGAGGCGCAGGCTATCATGAGTGAGCTCCGGACCATCAAGAAGGCCATTTGCACAGGCGAGAAGGAGA
GGCGGGACCTGATGCATAGCCTGGCCAAGCTGACCGATAGCTTCAAGAACAGCTGCTCCGTTACCGACTC
TCTAGTGGACTTCCCTCACCATGTAGGCGTGCCTGGCGATGCTGGTGTACCCAGCAGTTCTGCGATGCC
GGCTCCCAGACTGATATCATCGGGGAGTTGTCTTTGATGATAAAAACAAGACTTGTAGACCGAGTCAGAC
TTAATTGGCAATATGAAGAAGCCAGAAAGAGAGTCGCAACATCCAGCAGCAGCTGGCCCGGCTTGACAA
TGAGTCTGGCCAAGCACGGCCGAGGCTGACAGGACCGGCTGCAGCTCATCAAGGAGAAGGAGGCCCTG
CTGCAGGAGCTTCAGCTCATATTGCACAGCGCCGCTCTGCGGGAGATGTGGCCCGCTGGAGGAGGAGC
GGGAGCGCTAGAGGAGGAGCTGCGGCGTGCACGGCCACCTCCGCACAGGGCGCCACGGAGAGGATTCT
GCTTCAGGAAAAAAGGAATTGTCTACTTATGCAGCTGGAAGAAGCCACCCGCTTAACATCTACCTCCAG
TCCCAGTTAAAAAGCCTGTGTGCCAGCACCCCTGACGGTGTCTCGGGGAGCAGCCGCGGCTCCCTAGCCT
CCAGCCGTGGGTCTCTGGCCTCCAGCCGGGCTCCCTGAGCTCGGTGAGCTTACGGACATCTACGGCT
CCCGCAGTACGAGAAGCCGACGCTGAGGGCAGCCAGCTTCTACGCTTCGACCTCATTCCCTTCGACTCT
CTGGGGCAGATGCTCCCTTTTCAGAGCCCCAGGCCCTCGGGCTTCCACAAGCAGAGGGCGGTCCCTGG
ACAGCCCCAGTCCCTGGCATCGCTGTCTCCCGCTCCTCGCTGTCTCGCTGTCCGCCCAAGCTCGCC
CCTGGACACGCCCTTCTCCCTGCCTCAGGGACTCGCCGCTGGCGCAGCTGGCGGACAGCTGTGAGGGG



[View online »](#)

CCAGGCCTGGGGCCCTAGACAGACTGCGGGCACACGCCTCGGCTATGGGGGACGAAGACTTACCAGGCA
 TGGCGGCCCTTACGCCACACGGGGTCCCGGGGACGGGAAGGGCCGACGAGCGAGGACCCCCACCAGC
 CAGCGCTCCCGTGGGTGGAACAGTGACTCTTCGAGAAGACAGTGCCAAGAGGTTGGAGAGGAGGGCAGC
 CGCATCTCCGATGTCTGTCGGATTATTCGCTAGCCAGCGACAGTGGGGTGTGTTGAACCTTAACAAAA
 GGAACGAAGATGCCGAGGAGCCTGCCTACGGAGACACGGCCAGTAACGGAGATCCCAGATCCACGTGGG
 ACTCCTGCGCGACAGTGGCAGCGAGTGTCTCCTCGTGCACGTGCTGCAGCTGAAGAACCCGGCGGGCTG
 CGGTGAAGGAAGACTGCAAAGTCCACATCCGAGTCTATTTGCCCCACTGGACTCGGGACGCCCCAACA
 CTTACTGCTCCAAGGCTCTGGAGTTCCAAGTGCCGCTGGTGTAAACGAAGTGTTTCAGAATCCCCGTGCA
 TTCCAGCGGCTTACACTGAAGTCACTTCACTTACGTGTGTTCACTGACTCCGAGCTGCAGGAAGAA
 CTGCTGGGCATTGCTCAGATTAACCTGGCTGACTATGACAGTTTGTAGTGAGATGCAGCTGCGCTGGCATT
 CCGTGCAGGTGTTACCAGCTCTGAACCATCAAGGACGCGGGAGGCTGGGTGTGCAGGAGAGAGCTCCGC
 CCGGGACCCTGCACACACCATCTCCATCTCCGGCAAGACGGATGCGGTGACGGTGTCTCTGGCCAGAACC
 ACGGCACAGCTGCAGGCGGTGGAGAGGAACTGGCCGAGGACGGCCAACTGGAGTACACGGAGGAGG
 AGGTCTGGAGATGGAGCGCAAGGAGGAGCAGGCCGAGGCCATATCCGAGCGGAGTTGGCAAGCGGACTC
 GGTGGATAGCGGCTGTAGCAACTGCACCAGACCAGCCCTCCGTACCCAGAGCCCTGTTGCATGGGTATC
 GACTCCATCCTGGGCCACCCATTTGCTGTCTCAGGCAGGGCCTTACAGCCCGAGAAATTTAGCCCTCGC
 CTCTTAAGGTTGATAAGGAAACCAACACGGAAGATCTCTTTCTGGAAGAAGCAGCCAGCCTCGTGAAGGA
 GCGGCCACGCGCGGGCCCGAGGGTCCGCTTTTGTTCGGAGTGGCAGATTGTCCGTTCCAGACATTC
 TCGCCTGGAGCACGAAGCCAGTATGTTTGCAGACTTTATCGTAGTGACAGCGACAGTTAACCGCTGCCCC
 GGAAGTCCCCCTTTGTCCGAAACTTTTGGAAAGACGAACCCCTTCGCTATAAGCAGTTCATGCAGGTCTTC
 CCTGGCTGAGCTCATGGCCGCACCTCCCTGGACTTGGAGCTGGATCTCCAGGCGTCGAGAACACGGCAG
 AGGCAGCTGAATGAGGAGCTCTGCGCCCTCCGTGAGCTGCGGCAGCGGTGGAGGACGCCAGCTCCGTG
 GCCAGACTGACCTCCACCCCTGGGTGCTTCGGGACGAGCGGCTCCGTGGCCTGCTGCGGGAGCCGAGCG
 GCAGACAAGACAGACAAACTTGACTACCGTATGAGCAGGCGGCTGAGAAGATGCTGAAGAAGGCCCTCC
 AAGGAGATCTACCAGCTGCGTGGCAGAGCCACAAGAGCCCATCCAAGTGCAGACCTTTAGGGAGAAGA
 TAGCATTCTTACAAGGCCAAGGATCAACATACCTCTCTCCAGCCGACGACGTC

ACGCGTACGCGGCCGCTCGAGCAGAACTCATCTCAGAAGAGGATCTGGCAGCAAATGATATCCTGGATT
 ACAAGGATGACGACGATAAGGTTTAA

Protein Sequence:

>RC215823 representing NM_015691
 Red=Cloning site Green=Tags(s)

MDHINKL TQIEDPREQWRREQERMLKEYLIVAQEALNAKKEIYQIKQRFELAQEEYQQLHKMCEDDSR
 YASSFSYSTNTKYDPHQIKAEIASRRDRLSRLKREL TQMKQELQYKEKGVETLQEIDRKMSSTHTSYKL
 DEAQAIMSELRTIKKAICTGEKERRDLMHSLAKL TDSFKNSCSVTDLSL VDFPHHVGPVGDAGVPQQFCDA
 GSQTDI IGEFVFDKTRLVDRVRLNWQYEEARKRVANIQQQLARLDNESWPSTAEADRDLQLIKEKEAL
 LQELQL IIAQRRSAGDVARLEEEERLEEEELRRARATSAQGATERILLQEKRNCLLMQLEEATRLTSYLQ
 SQLKSLCASTLTVSSGSSRGLASSRGLASSRGLSSVSFTDIYGLPQYKPDAGSLLRFDLIPFDS
 LGRDAPFSEPPGSPGFHKQRRSLDTPQSLASLSSRSSLSSLSPSSPLDTPFLPASRDSPLAQLADSC
 PGLGALDRLRAHASAMGDEDLPGMAALQPHGVPGDGEHPHERGPPASAPVGGTVTLREDSAKRLERRAR
 RISACLSDYSLASDSGVFEPLTKRNDAEPEAYGDTASNGDPQIHVGLLRDSGSECLLVHVLQLKNPAGL
 AVKEDCKVHIRVYLPPLDSGTPNTYCSKALEFQVPLVFNEVFRIPVHSSALTLKSLQLYVCSVTPQLQEE
 LLGIAQINLADYDSLSEMQLRWHSVQVFTSSEPSRTREAGCAGESSARDAHTISISGKTDVAVTLLART
 TAQLQAVERELAEERAKLEYTEEEVLEMERKEEQAEAISERSWQADSVDSGCSNCTQTSPPYPECCMGI
 DSILGHPFAAQAGPYSPKFPSPKVDKETNTEDLFLEEAASLVKERPSRRARGSPFVRSQTI VRSQTF
 SPGARSQYVCRLYRSDSDSSTLPRKSPFVRNTLERRTLRYKQSCRSSLAELMARTSLDLELDLQASRTQ
 RQLNEELCALREL RQRLQEDALRQGTDLPPWVLRDERLRGLLREARQTRQTKLDYRHEQAEEKMLKKAS
 KEIYQLRGQSHKEPIQVQTFREKIAFFTRPRINIPPLPADDV

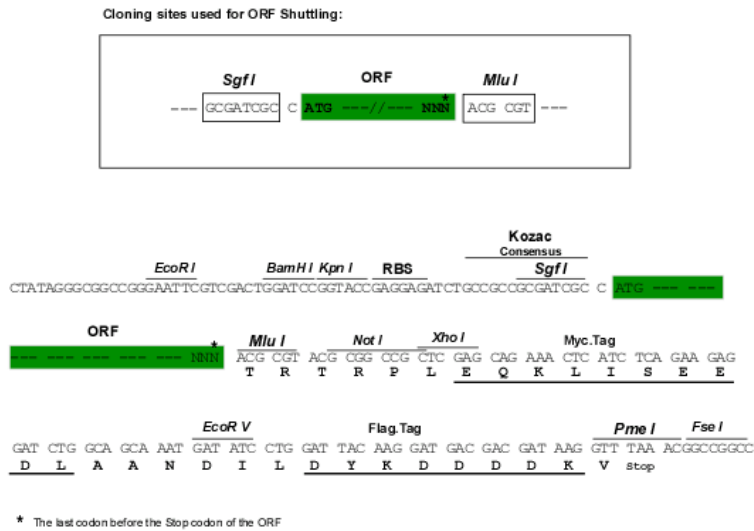
TRTRPLEQKLI SEEDLAANDILDYKDDDDKV

Chromatograms:

https://cdn.origene.com/chromatograms/mg4197_a05.zip

Restriction Sites: SgfI-MluI

Cloning Scheme:



ACCN: NM_015691

ORF Size: 3276 bp

OTI Disclaimer: The molecular sequence of this clone aligns with the gene accession number as a point of reference only. However, individual transcript sequences of the same gene can differ through naturally occurring variations (e.g. polymorphisms), each with its own valid existence. This clone is substantially in agreement with the reference, but a complete review of all prevailing variants is recommended prior to use. [More info](#)

OTI Annotation: This clone was engineered to express the complete ORF with an expression tag. Expression varies depending on the nature of the gene.

Components: The ORF clone is ion-exchange column purified and shipped in a 2D barcoded Matrix tube containing 10ug of transfection-ready, dried plasmid DNA (reconstitute with 100 ul of water).

- Reconstitution Method:
1. Centrifuge at 5,000xg for 5min.
 2. Carefully open the tube and add 100ul of sterile water to dissolve the DNA.
 3. Close the tube and incubate for 10 minutes at room temperature.
 4. Briefly vortex the tube and then do a quick spin (less than 5000xg) to concentrate the liquid at the bottom.
 5. Store the suspended plasmid at -20°C. The DNA is stable for at least one year from date of shipping when stored at -20°C.

RefSeq: [NM_015691.2](#)

RefSeq Size: 6463 bp

RefSeq ORF: 3279 bp

Locus ID: 55841

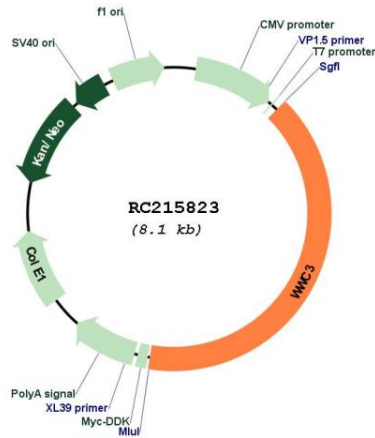
UniProt ID: [Q9ULE0](#)

Cytogenetics: Xp22.2

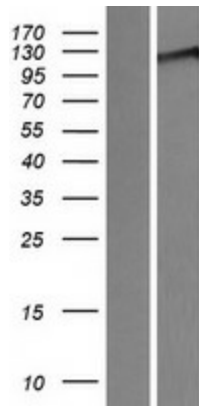
MW: 122.5 kDa

Gene Summary: This gene encodes a member of the WWC family of proteins, which also includes the WWC1 (KIBRA) gene product and the WWC2 gene product. The protein encoded by this gene includes a C2 domain, which is known to mediate homodimerization in the related WWC1 gene product. [provided by RefSeq, Sep 2011]

Product images:



Circular map for RC215823



Western blot validation of overexpression lysate (Cat# [LY414385]) using anti-DDK antibody (Cat# [TA50011-100]). Left: Cell lysates from untransfected HEK293T cells; Right: Cell lysates from HEK293T cells transfected with RC215823 using transfection reagent MegaTran 2.0 (Cat# [TT210002]).